

Product datasheet for **RC240016**

STAG3 (NM_001282718) Human Tagged ORF Clone

Product data:

Product Type: Expression Plasmids
Product Name: STAG3 (NM_001282718) Human Tagged ORF Clone
Tag: Myc-DDK
Symbol: STAG3
Vector: pCMV6-Entry (PS100001)
E. coli Selection: Kanamycin (25 ug/mL)
Cell Selection: Neomycin
ORF Nucleotide Sequence: >RC240016 representing NM_001282718
Red=Cloning site Blue=ORF Green=Tags(s)

TTTTGTAATACGACTCACTATAGGGCGGCCGGAATTCGTCGACTGGATCCGGTACCGAGGAGATCTGCC
 GCCCGATCGCC

ATGCTCTCCCGTTGCAAAGAGCTGTGGGAGATACCAAGAGGGCCTTGTCTGCATCTTCTAGTTCCTCTG
 CCAGTCTACCCCTTGGATGACAGGGACTCAAACCATACCTCAGAGGGGAATGGCGACTCTTGTAGCTGA
 TGAAGACTGACTTTGAAGACAGCTTGAATCGCAATGTGAAGAAGAGAGCAGCAAAACGACCACCGAAA
 ACAACACCGGTGGCAAAACATCCAAAGAAAGGGTCCCGAGTGGTACATCGTCATAGCCGAAACAGTCAG
 AGCCACCAGCCAATGATCTTTTCAATGCTGTGAAAGCCGCAAAAAGTGACATGCAGGACTCGGGGACTA
 CCCTCTCATAGCTCCAGGTCCATCCTGGAAGAAGTCCAGGGCAGCTTCTGTGAATTTGTGAGGACATTG
 GTCTGTCACTGACGACTACAGCCTCCTCTATGATGGCTTCCCTATGGACGACCTCATCTCCCTGCTCACTG
 GCCTCTCAGACTCACAAGTCCGCGCCTCCGTCACACTAGCACCTGGCTGCTATGAACTGATGACCTC
 CCTGGTAAAAGTTGCCCTCCAAGTGAAGTGTGCACCAAGATAACAATCAGCGTCAGTATGAGGCTGAAAGA
 AACAGGGGCCAGGGCAGAGGGCACCTGAGCGGCTGGAGAGCCTGTTGGAGAAACGAAAGACTCCAAG
 AGCATCAAGAGGAGATTGAGGGGATGATGAATGCCCTTTCAGGGGTGTCTTTGTTTCATCGGTACAGGGA
 TGTCTTCTGAGATCCGTGCTATCTGCATTGAGGAAATGGGGTGTGGATGCAAAGCTACAGCAGTCT
 TTCTCACCAGACAGCTATTTAAAATATATTGGTTGGACTCTGCATGATAAGCACCAGAAAGTCCGCCTGA
 AGTGTGTGAAGGCCCTGAAAGGGCTGTACGGTAACCGGGACCTGACCACACGCCTGGAGCTCTTACCAG
 CCGCTTCAAGGACCGGATGGTTTCCATGGTTCATGGACAGAGAGTATGATGTGGCAGTGGAGGCTGTGAGA
 TTAAGTACTTATCCTTAAAGACATGGAAGGGGTGCTGACGGACGCGGATTGTGAGAGCGTCTACCCAG
 TTGTGTATGCCTCATCGAGGCTGGCTTCCGCGAGGCGAATTTCTGACTGAAACTCTTCTACCC
 TGAGTGCAGATAAAGATGATGGGTGGAAGAGAGCAACGCCAGAGCCAGGCGCCAGAGGACTTCTTCTC
 CAGCTTCTGCTCCTTCTTTGTGGAGAGCGAGCTCCATGACCAGCTGCTTACTTAGTAGACAGTCTGT
 GGGACTGTGCAGGGGCTCGGCTGAAGGACTGGGAGGGTCTGACAAGCCTGCTGCTGGAGAAGGACCAGAA
 CCTGGGTGATGTGACAGGAGACACTGATAGAAATCCTGTGTCCAGTGCCTGGCAAGCTTTCAGAGGGG
 CACCCGCCTGTGGCCGGTCACTGGGAGGAAGGGCTTAACCTCTAAGGAGCGCAAGACCAAGCCGATG
 ACAGGGTGAAGTTGACTGAGCACCTCATCCCCCTGCTGCCCCAGCTCCTGGCCAAGTTCTCAGCTGATGC
 AGAGAAGGTCACCTCCCTGCTCCAGCTTCTCAGCTGCTTTGACCTCCACATCTACTGCACCTGGGCGCTTG



GAGAAGCACCTGGAGCTGTTCCCTGCAGCAACTCCAGGAGGTGGTGGTGAAGCATGCAGAGCCAGCGGTGC
 TTGAGGCTGGGGCGCATGCCCTCTACCTGCTCTGTAATCCCGAATCACTTTCTTCAGCCGGGCGGACTT
 TGCCCGCAGCCAGCTAGTAGATTGCTGACTGACCGCTCCAGCAGGAGCTTGAAGAGCTGTTACAGTCG
 TCCTTCTAGATGAGGATGAGGTATATAATCTGGCAGCCACTCTGAAACGCCTCTCTGCCTTCTACAACA
 CTCATGACCTGACTCGCTGGGAGCTCTATGAGCCATGTTGCCAATCCTGCAGAAGGCTGTGGACACAGG
 AGAGGTTCTCACCAGGTTATCCTGCCAGCCTTGACTCTGTCTATTTTTCCATTCTCTGGACACTAACC
 CACATTTCTAAATCAGATGCTTCCAGAAAGCAGCTGTCAGATTTGAGGGACAGAATGGTGGCCTTCTGTG
 AACTCTGCCAGAGTTGCCTCTCAGATGTGGATACTGAGATCCAGGAGCAGGCTTTTGTCTTATTAAGTGA
 TCTACTTCTCATCTTTAGCCCTCAGATGATTGTTGGGGCCGTGATTTCTTAGGCCACTTGTCTTTTTT
 CCTGAAGCTACTCTCCAGTCTGAGCTAGCCAGCTTCTCATGGACCACGTCTTATCCAGCCGGGAGACC
 TGGGCAGTGGTATTCCAGGAGGATCATTTACAGATAGAGCGGCTACACCAGCGCGCCGCTCTAGC
 CGGTTCTGCAAGCTGTTGCTTTATGGGGTCTGGAGATGGATGCAGCCTCAGATGTTTTCAAACACTAC
 AACAGTTCTACAATGACTATGGTGACATTATCAAGGAAACATTAAGTAGAGCAAGGCAGATTGACCGAA
 GTCATTGTTCCCGAATCCTGCTGCTGAGCCTCAAGCAGCTGTACACAGAAGCTGCTGCAGGAGCATGGCC
 CCAGGGCCTGAATGAGCTTCTGCCTTCTCGAGATGAGGGACCTGGCCCGGAGGTTTGCCTTGAGTTTT
 GGACCCAGCAGCTGCAGAACCTGACCTCGTGGTCTGCTACACAAGGAAGGCATCCAGTTCTCCTTGT
 CTGAGCTTCTCCAGCTGGCTCCTCCAATCAGCCTCCAATCTGGCATTCTGGAGCTCCTTTCAGAGTT
 TCCCCCGACTTCTCCATCAGGACAAGCAGCTTTTACTGTCTTCTAGAAAAGTGCCTGCAGCATGTC
 TCCCAGGCACCTGGCCATCCCTGGGGCCAGTCAACCTACTGCCACTCCCTCAGCCCTGTGGAGAACA
 CAGCAGAGACCAGCCCTCAGTCTCCAGCTCCAAGAGGAGGCGCGTTGAAGGGCCTGCCAAGCCTAA
 CAGAGAGGAGCTCTCCTCGTCCCAGGAAGAAAGTCTGCAGCTGAACAGCATCCCGCCACGCCACCCTC
 ACCTCCACAGCTGTGAAGAGCAGGCAGCCCTGTGGGGTTGAAAGAGATGGAGGAAGAAGATGGCTCAG
 AGTTGGATTTTGGCCAGGGTCAGCCCGTGCAGCACCAGAGGTTCAAGTTCTTGGGTCACAATATTT
 CCAGACTCCACACAACCCTTCAAGTCTGGCCTGGGCAACCAGCTGATGCGACTCAGCCTTATGGAAGAG
 GACGAGGAAGAAGAGTTAGAAATCCAGGATGAGTCAAATGAAGAACGGCAGGATACAGACATGCAAGCAA
 GTAGTACTCTTCCACCAGTGAAGCGGGCTGGACCTCTAGATTCTACAGAGCTGGATATTGAGGATTT
 C

ACGCGTACGCGGCCGCTCGAGCAGAAACTCATCTCAGAAGAGGATCTGGCAGCAAATGATATCCTGGATT
 ACAAGGATGACGACGATAAGGTTTAA

Protein Sequence:

>RC240016 representing NM_001282718
 Red=Cloning site Green=Tags(s)

MSSPLQRAVGDTRKRALSSSSSSASLPFDDRDSNHTSENGDSLLEDEDTFEDSLNRNVKKRAAKRPPK
 TTPVAKHPKKGSRVVHRHSRQSEPPANDLFNAVKAASDMQDSGDYPLIAPGPSWKKFQGSFCEFVRTL
 VCQCQYSLLYDGFPMDDLISLLTGLSDSQVRAFRTSTLAAMKMLTSLVKVALQLSVHQDNNQRQYEAER
 NKGPGRAPERLESLEKREKELQEHQEEIEGMMNALFRGVFVHRVYRDVLPETRAICIEEIGCWMQSYSTS
 FLTDSYLKYIGWTLHDKHREVRLKCVKALKGLYGNRDLTTRLELFTSRFKDRMVMVMMDREYDVAVEAVR
 LLILILKNMEGVLTDADCEVYPVYVYASHRGLASAAGEFLYWKLFYPECEIRMMGGREQRQSPGAQRFF
 QLLLFFVESELHDHAYLVDSLWDCAGARLKDWEGLTSLLEKQNLGDVQESTLIEILVSSARQASEG
 HPPVGRVTGRKGLTSKERKTQADDRVKLTEHLIPLLPQLLAKFSADAQVTPLLQLSCFDLHIYCTGRL
 EKHLELFLQQLQEVVVKHAEPVLEAGAHALYLLCNPEFTFFSRADFARSQVLDLLDRFQQEELELLQS
 SFLDEDEVYNLAATLKRLSAFYNTHDLTRWELYEPCCQLLQKAVDTGEVPHQVILPALTLVYFSILWTLT
 HISKSDASQQLSSLRDRMVAFCCLCQSLSDVDTEIQEQAFVLLSDLLLIFSPQMI VGGGRDFLRPLVFF
 PEATLQSELAFLMDHVFIQPGDLGSGDSQEDHLQIERLHQRRRLLAGFCKLLL YGVLEMDAASDVFKHY
 NKFYNDYGDIIKETLTRARQIDRSHCSRILLLSLKQLYTELLQEHGPQGLNELPAFIEMRDLARRFALS
 GPQQLQNRDLVVMLHKEGTQFSLSELPPAGSSNQPPNLAFLLELSEFSPRPFHQDKQLLSYLEKCLQHV
 SQAPGHPWGPVTTYCHSLSPVENTAETSPQVLPSSKRRRVEGPAKPNREDVSSSQEESLQLNSIPPTPTL
 TSTAVKSRQPLWGLKEMEEEDGSELDFAQGPVAGTERSRLGPQYFQTPHNPSGPGGLGNQLMRLSLMEE
 DEEELEIQDESNEERQDMDQASSYSSTSERGLDLLDSTELDIEDF

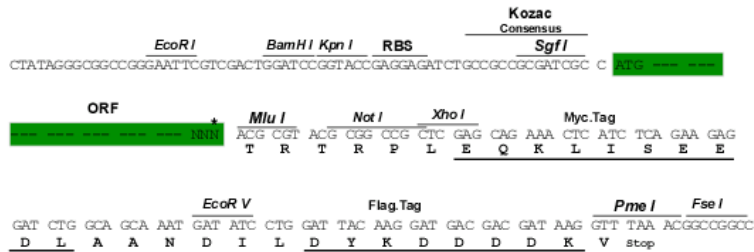
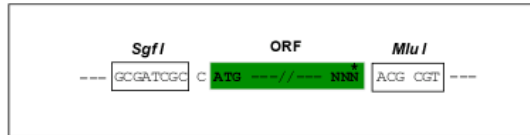
TRTRPLEQKLISEEDLAANDILDYKDDDDKV

Restriction Sites:

Sgfl-MluI

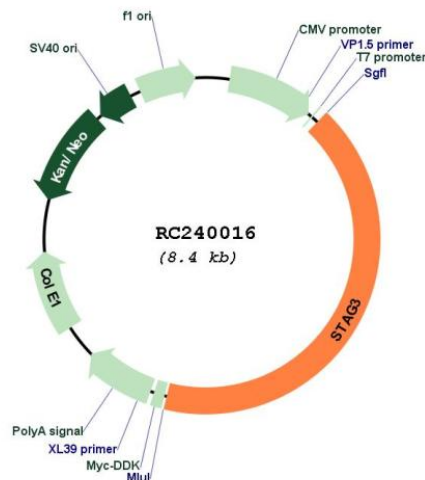
Cloning Scheme:

Cloning sites used for ORF Shuttling:



* The last codon before the Stop codon of the ORF

Plasmid Map:



ACCN: NM_001282718

ORF Size: 3501 bp

OTI Disclaimer: The molecular sequence of this clone aligns with the gene accession number as a point of reference only. However, individual transcript sequences of the same gene can differ through naturally occurring variations (e.g. polymorphisms), each with its own valid existence. This clone is substantially in agreement with the reference, but a complete review of all prevailing variants is recommended prior to use. [More info](#)

OTI Annotation: This clone was engineered to express the complete ORF with an expression tag. Expression varies depending on the nature of the gene.

Components: The ORF clone is ion-exchange column purified and shipped in a 2D barcoded Matrix tube containing 10ug of transfection-ready, dried plasmid DNA (reconstitute with 100 ul of water).

Reconstitution Method:

1. Centrifuge at 5,000xg for 5min.
2. Carefully open the tube and add 100ul of sterile water to dissolve the DNA.
3. Close the tube and incubate for 10 minutes at room temperature.
4. Briefly vortex the tube and then do a quick spin (less than 5000xg) to concentrate the liquid at the bottom.
5. Store the suspended plasmid at -20°C. The DNA is stable for at least one year from date of shipping when stored at -20°C.

RefSeq: [NM_001282718.2](#)

RefSeq Size: 4187 bp

RefSeq ORF: 3504 bp

Locus ID: 10734

UniProt ID: [Q9UJ98](#)

Cytogenetics: 7q22.1

Protein Pathways: Oocyte meiosis

MW: 132.8 kDa

Gene Summary: The protein encoded by this gene is expressed in the nucleus and is a subunit of the cohesin complex which regulates the cohesion of sister chromatids during cell division. A mutation in this gene is associated with premature ovarian failure. Alternate splicing results in multiple transcript variants encoding distinct isoforms. This gene has multiple pseudogenes. [provided by RefSeq, Apr 2014]