

Product datasheet for RC239986

USP25 (NM_001283041) Human Tagged ORF Clone

Product data:

Product Type:	Expression Plasmids
Product Name:	USP25 (NM_001283041) Human Tagged ORF Clone
Tag:	Myc-DDK
Symbol:	USP25
Synonyms:	USP21
Vector:	pCMV6-Entry (PS100001)
E. coli Selection:	Kanamycin (25 ug/mL)
Cell Selection:	Neomycin
ORF Nucleotide Sequence:	>RC239986 representing NM_001283041 Red=Cloning site Blue=ORF Green=Tags(s)

TTTTGTAATACGACTCACTATAGGGCGGCCGGAATTCGTCGACTGGATCCGGTACCGAGGAGATCTGCC
GCC**GCGATCGCC**

ATGACCGTGGAGCAGAACGTGCTGCAGCAGAGCGCGGCCGAGAAGCACCAGCAGACGTTTTTGAATCAAC
TGAGAGAAATTACGGGGATTAATGACACCCAGATACTACAGCAAGCCTTGAAGGATAGTAATGGAACTT
GGAATTAGCAGTGGCTTTCCTTACTGCGAAGAATGCTAAGACCCCTCAGCAGGAGGAGACAATTACTAC
CAAACAGCACTTCTGGCAATGATAGATACATCAGTGTGGGAAGCCAAGCAGATACAAATGTGATTGATC
TCACTGGAGATGATAAAGATGATCTTCAGAGAGCAATTGCCTTGAGTTTGGCCGAATCAAACAGGGCATT
CAGGGAGACTGGAATAACTGATGAGGAACAAGCCATTAGCAGAGTTCTTGAAGCCAGCATAGCAGAGAAT
AAAGCATGTTTGAAGAGGACACCTACAGAAGTTTGGAGGGATTCTCGAAACCCCTTATGATAGAAAAAGAC
AGGACAAAGCTCCCGTTGGGCTAAAGAATGTTGGCAACTTGTGGTTTGTGCTGTTATTTCAGTCATT
ATTTAATCTTTTGAATTTAGAAGATTAGTTCTGAATTACAAGCCTCCATCAAATGCTCAAGATTTACCC
CGAAACAAAAGGAACATCGGAATTTGCCTTTTATGCGTGAGCTGAGGTATCTATTTGCACTTCTGTGTG
GTACCAAAAAGGAAGTATGTTGATCCATCAAGAGCAGTTGAAATTTTAAAGGATGCTTTCAAATCAAATGA
CTCACAGCAGCAAGATGTGAGTGTGTTACACACAAATTTAGATTGGTTAGAAGATGCCTTCCAAATG
AAAGCTGAAGAGGAGACGGATGAAGAGAAGCCAAAGAACCCCATGGTAGAGTTGTTCTATGGCAGATTCC
TGGCTGTGGGAGTACTTGAAGGTAAAAATTTGAAAACACTGAAATGTTTGGTCAGTACCCACTTCAGGT
CAATGGGTTCAAAGATCTGCATGAGTGCCTAGAAGCTGCAATGATTGAAGGAGAAATTGAGTCTTTACAT
TCAGAGAATTCAAGAAAATCAGGCCAAGAGCATTGGTTTACTGAATTACCACCTGTGTTAACATTTGAAT
TGTCAGATTTGAATTTAATCAGGCATTGGGAAGACCAGAAAAATTCACAACAAATTAGAATTTCCCA
AGTTTTATTTTGGACAGATACATGCACAGAAACAGAGAAATAACAAGAATTAAGAGGGAAGAGATCAAG
AGACTGAAAGATTACCTCAGGTATTACAACAAAGGCTAGAAAGATATTTAAGCTATGGTCCGGTCCCA
AACGATTTCCCTTGGTAGATGTTCTTCAAGTATGCATTGGAATTTGCCTCAAGTAAACCTGTTTGCATTC
TCCTGTTGACGATATTGACGCTAGTTCCCCACCTAGTGGTTCCATACCATCACAGACATTACCAAGCACA
ACAGAACAACAGGGAGCCCTATCTTCAGAACTGCCAAGCACATCACCTTCATCAGTTGCTGCCATTTTCAT



CGAGATCAGTAATACACAAACCATTTACTCAGTCCCGGATACCTCCAGATTTGCCATGCATCCGGCACC
 AAGGCACATAACGGAGGAAGAACTTTCTGTGCTGGAAAGTTGTTTACATCGCTGGAGGACAGAAATAGAA
 AATGACACCAGAGATTTGCAGGAAAGCATATCCAGAATCCATCGAACAATTGAATTAATGTACTCTGACA
 AATCTATGATACAAGTTCCTTATCGATTACATGCCGTTTTAGTTCACGAAGGCCAAGCTAATGCTGGGCA
 CTACTGGGCATATATTTTATGATCATCGTGAAGCAGATGGATGAAGTACAATGATATTGCTGTGACAAAA
 TCATCAATGGGAAGAGCTAGTGAGGGACTCTTTTGGTGGTTATAGAAATGCCAGTGCATAGCTGTTAATGT
 ACATAAATGATAAGGCACAGTTCCTAATACAAGAGGAGTTTAATAAAGAAACTGGGCCCTTGTGTTGG
 TATAGAAACATTACCACCGGATTTGAGAGATTTTGTGAGGAAGACAACCAACGATTTGAAAAAGAACTA
 GAAGAATGGGATGCACAACCTGCCAGAAAGCTTTGCAGGAAAAGCTTTTAGCGTCTCAGAAATTGAGAG
 AGTCAGAGACTTCTGTGACAACAGCACAAGCAGCAGGAGACCCAGAATATCTAGAGCAGCCATCAAGAAG
 TGATTTCTCAAAGCACTTGAAAGAAGAACTATTCAAATAATTACCAAGGCATCACATGAGCATGAAGAT
 AAAAGTCTGAAACAGTTTTGCAGTCGAAACCTGAAAATACTACAAGCCAACCCTTTCTAATCAGCGAG
 TTGTAGAGGTGGCGATCCCTCATGTAGGGAATTTATGATTGAATCAAAGGAGGGGGGTATGATGACGA
 GATCATGATGACACCGAACATGCAAGGTATTATCATGGCGATAGGTAATCCAGGAGTGTATATGACAGG
 TGTGGCCCTGAAGCAGGGTCTTTAAGGCAATTAAGTTGGAATATGCAAGTTGGTTAAGTTGGCCCAAG
 AAGACACCCACCAGAAACCGATTATCGTTTACATCATGTAGTGGTCTACTTTATCCAGAACCCAGGCACC
 AAAGAAAATTATTGAGAAAACATTACTAGAACAAATTTGGAGATAGAAATTTGAGTTTTGATGAAAGGTGT
 CACAACATAATGAAAGTTGCTCAAGCCAACTGGAAATGATAAAACCTGAAGAAGTAAACTTGGAGGAAT
 ATGAGGAGTGGCATCAGGATTATAGGAAATTCAGGGAACAACACTATGTATCTCATAATTGGGCTAGAAAA
 TTTTCAAAGAGAAAGTTATAGATTCTTGTCTTCTCATCTGTGCTTATCAGAATAACAAAGAACTC
 TTGTCTAAAGGCTTATACAGAGGACATGATGAAGAATTGATATCACATTATAGAAGAGAATGTTTGCTAA
 AATTAATGAGCAAGCCGAGAACTCTTGAATCTGGAGAGGATCGAGAAGTAAACAATGGTTTGATTAT
 CATGAATGAGTTTATTGTCCCATTTTTGCCATTATTACTGGTGGATGAAATGGAAGAAAAGGATATACTA
 GCTGTAGAAGATATGAGAAATCGATGGTTCCTACCTTGGTCAAGAAATGGAACCCACACCTCCAAGAAA
 AGCTGACAGATTTTTTGCAAAACCTGCTTGATTGTTCTATGGAGATTAAGTTTCCATGAGCCACCGAA
 GTTACCTTCATATCCACGCATGAACTCTGTGAGCGATTTGCCGAATCATGTTGTCCCTCAGTCGAACT
 CCTGCTGATGGAAGA

ACGCGTACGCGGCCGCTCGAGCAGAAACTCATCTCAGAAGAGGATCTGGCAGCAATGATATCCTGGATT
 ACAAGGATGACGACGATAAGGTTTAA

Protein Sequence:

>RC239986 representing NM_001283041
 Red=Cloning site Green=Tags(s)

MTVEQNVLQQSAAQKHQQTFLNQLREITGINDTQILQQALKDSNGNLELAVAFLLAKNAKTPQQEETTY
 QTALPGNDRYISVGSQADTNVIDLTGDDKDDLQRAIALSLAESNRAFRETGITDEEQAISRVLEASIAEN
 KACLKRTPTVEWRDSRNPYDRKRQDKAPVGLKNVGNTCWFSAVIQSLFNLLFRRLVLNYKPPSNAQDLP
 RNQKEHRNLPFMRELRYLFAALLVGTKRKYVDPSSRAVEILKDAFKSNDSQQQDVSEFTHKLLDWLEDAFQM
 KAEETDEEKPKNPMVELFYGRFLAVGVLEGGKFENTEMFGQYPLQVNGFKDLHECLEAAMIEGIESLH
 SENSNGKSGQEHWFTELPPVLTFFELSRFEFNQALGRPEKIHNKLEFPQVLYLDRYMHRNREITRIKREEIK
 RLKDYLTVLQQRLERYLSYSGSPKRFPLVDVLQYALEFASSKPVCTSPVDDIDASSPPSGSIPSQTLPTST
 TEQQGALSSELSTSPSSVAAISSRSVIHKPFTQSRIPDLPMPHPAPRHITEEELSVLESCLHRWRTEIE
 NDTRDLQESISRIHRTIELMYSKSMIQVPYRHLAVLVHEGQANAGHYWAYIFDHRESRWMKYNDIAVTK
 SSWEELVRDSFGGYRNASAYCLMYINDKAQFLIQEEFNKETGQPLVGIETLPPDLRDFVEEDNQRFKEL
 EEWDAQLAQKALQEKLLASQKLRESESVTTAQAAGDPEYLEQPSRSDFSKHLKEETIQIITKASHEHD
 KSPETVLQSKPENTTSQPLSNQRVVEVAIPHVGKFMIESKEGGYDDEIMMTPNMQGIIMAIKGRSRSVYDR
 CGPEAGFFKAIKLEYARLVKLAQEDTPPETDYRLHHVVVYFIQNQAPKKIIEKTLLEQFGDRNLSFDERC
 HNIIMKVAQAKLEMIPKEEVNLEEYEEWHQDYRKFRRETTMYLIIGLENFQRESYIDSLLFLICAYQNNKEL
 LSKGLYRGHDEELISHYRRECLLKLNEQAAELFESGEDREVNGLIIMNEFIVPFLPLLLVDEMEEKDIL
 AVEDMNRNWCYSYLGEMEPHLQEKLTDFLPKLLDCSMEIKSFHEPPKLPSTHELCEARIMLSLSRT
 PADGR

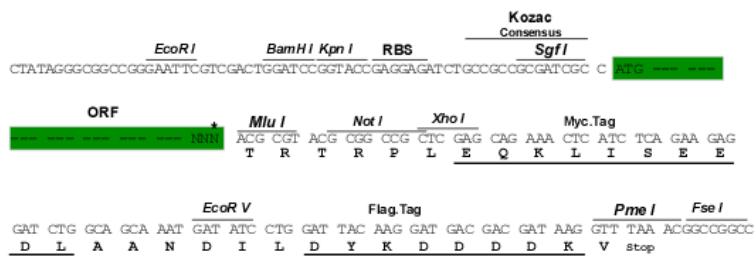
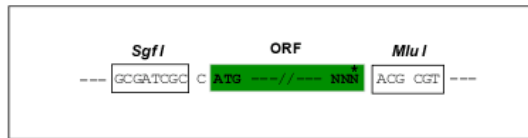
TRTRPLEQKLI SEEDLAANDILDYKDDDDKV

Restriction Sites:

SgfI-MluI

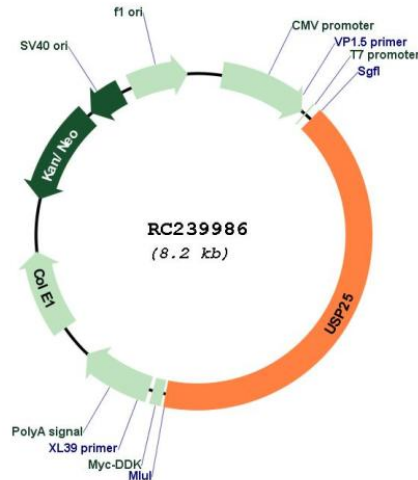
Cloning Scheme:

Cloning sites used for ORF Shuttling:



* The last codon before the Stop codon of the ORF

Plasmid Map:



ACCN: NM_001283041

ORF Size: 3375 bp

OTI Disclaimer: The molecular sequence of this clone aligns with the gene accession number as a point of reference only. However, individual transcript sequences of the same gene can differ through naturally occurring variations (e.g. polymorphisms), each with its own valid existence. This clone is substantially in agreement with the reference, but a complete review of all prevailing variants is recommended prior to use. [More info](#)

OTI Annotation: This clone was engineered to express the complete ORF with an expression tag. Expression varies depending on the nature of the gene.

Components: The ORF clone is ion-exchange column purified and shipped in a 2D barcoded Matrix tube containing 10ug of transfection-ready, dried plasmid DNA (reconstitute with 100 ul of water).

Reconstitution Method:

1. Centrifuge at 5,000xg for 5min.
2. Carefully open the tube and add 100ul of sterile water to dissolve the DNA.
3. Close the tube and incubate for 10 minutes at room temperature.
4. Briefly vortex the tube and then do a quick spin (less than 5000xg) to concentrate the liquid at the bottom.
5. Store the suspended plasmid at -20°C. The DNA is stable for at least one year from date of shipping when stored at -20°C.

RefSeq: [NM_001283041.2](#)

RefSeq Size: 5359 bp

RefSeq ORF: 3378 bp

Locus ID: 29761

UniProt ID: [Q9UHP3](#)

Cytogenetics: 21q21.1

Protein Families:	Protease
MW:	130.4 kDa
Gene Summary:	Ubiquitin (MIM 191339) is a highly conserved 76-amino acid protein involved in regulation of intracellular protein breakdown, cell cycle regulation, and stress response. Ubiquitin is released from degraded proteins by disassembly of the polyubiquitin chains, which is mediated by ubiquitin-specific proteases (USPs), such as USP25 (Valero et al., 1999 [PubMed 10644437]).[supplied by OMIM, Mar 2008]