

Product datasheet for RC239939

PEX1 (NM_001282678) Human Tagged ORF Clone

Product data:

Product Type:	Expression Plasmids
Product Name:	PEX1 (NM_001282678) Human Tagged ORF Clone
Tag:	Myc-DDK
Symbol:	PEX1
Synonyms:	HMLR1; PBD1A; PBD1B; ZWS; ZWS1
Vector:	pCMV6-Entry (PS100001)
E. coli Selection:	Kanamycin (25 ug/mL)
Cell Selection:	Neomycin
ORF Nucleotide Sequence:	>RC239939 representing NM_001282678 Red=Cloning site Blue=ORF Green=Tags(s)

CTATAGGGCGGCCGGGAATTCGTCGACTGGATCCGGTACCGAGGAGATCTGCCGCCGCGATCGCCGGCGC
GCC

ATGATGAAAGAAGCTTCAAACCAAGCACTTCAGTCAAATACTGTGGGAATCACTGAATCTAATGAAAACG
AGTCAGAGATTCAGTTGACTCATCATCAGTAGCAAGTTTATGGACTATGATAGGAAGCATTTTTCTCT
TCAATCTGAGAAGAAACAAGAGACATCTGGGGTTAACTGAAATCAATGCATCAAAAAATATGCAGTCA
AAGTTTCTCTAGACAATATTTTCAGAGTATGCAAATCTCAACCTCCTAGTATATATAACCGCTCAG
CAACCTCTGTTTTTCATAAACACTGTGCCATTCATGTATTTCCATGGGACCAGGAATATTTGATGTAGA
GCCAGCTTACTGTGACATATGGAAAGCTAGTTAAGCTACTTTCTCAAAGCAACAGCAAAAGTAAAAACA
AAACAAAATGTGTTATCACCTGAAAAAGAGAAGCAGATGTCAGAGCCACTAGATCAAAAAAAATAGGT
CAGATCATAATGAAGAAGATGAGAAGCCTGTGTGCTACAAGTAGTCTGGAATGGACTTGAAGAATTGAA
CAATGCCATCAAATATACAAAAATGTAGAAGTTCTCCATCTTGGGAAAGTCTGGATTCCAGATGACCTG
AGGAAGAGACTAAATATAGAAATGCATGCCGTAGTCAGGATAACTCCAGTGAAGTTACCCCTAAAAATTC
CAAGATCTCTAAAGTTACAACCTAGAGAGAATTTACCTAAAGACATAAGTGAAGAAGACATAAAAACTGT
ATTTTATTCATGGCTACAGCAGTCTACTACCACCATGCTTCTTTGGTAATATCAGAGGAAGAATTTATT
AAGCTGAAAAGTAAAGATGGACTGAAGGAATTTCTCTGAGTATAGTTTCTTGGGAAAAAGAAAAAG
ATAAAAAATTTTTCTGTTGAGTCCCAATTTGCTGCAGAAGACTACAATACAAGTCTTTCTAGATCCTAT
GGTAAAAGAAGAAAACAGTGAGGAAATGACTTTATTCTTCTTTTTAAAGCTGAGCTCTTTGGGAGGA
GTGAATTCCTTAGGCGTATCCTCCTGGAGCACATCACTCACAGCCTCTGGGACGCCCTTTGTCTCGGC
AGCTGATGTCTTTGTCAGGACTTAGGAATGGAGCTTTTTACTCACAGGAGGAAAGGGAAGTGGAAA
ATCAACTTAGCCAAAGCAATCTGTAAGAAGCATTGACAAAACCTGGATGCCCATGTGGAGAGAGTTGAC
TGTAAGCTTTACGAGGAAAAAGCTTGAACATACAAAAACCTAGAGGTGGCTTTCTCAGAGGCAG
TGTGGATGCAGCCATCTGTTGTCTGCTGGATGACCTTGACCTATTGCTGGACTGCCTGCTGCCGGGA
ACATGAGCACAGTCTGATGCGGTGCAGAGCCAGCGGCTTGTCTATGCTTTGAATGATATGATAAAGAG
TTTATCTCCATGGGAAGTTTGGTTGCACTGATTGCCACAAGTCAGTCTCAGCAATCTCTACATCCTTTAC



[View online »](#)

TTGTTTCTGCTCAAGGAGTTCACATATTTTCAGTGCGTCCAACACATTCAGCCTCCTAATCAGGAACAAAG
 ATGTGAAATTCCTGTGAATGTAATAAAAAATAAATGGACTGTGATATAAAACAAGTTCACCGATCTTGAC
 CTGCAGCATGTAGCTAAAGAACTGGCGGGTTTGTGGCTAGAGATTTTACAGTACTTGTGGATCGAGCCA
 TACATTCTCGACTCTCTCGTCAGAGTATATCCACCAGAGAAAAATTAGTTTTAACACATTGGACTTCCA
 AAAGGCTCTCCGCGGATTTCTTCTGCGTCTTTGCGAAGTGTCAACCTGCATAAACCTAGAGACCTGGGT
 TGGGACAAGATTGGTGGGTTACATGAAGTTAGGCAGATACTCATGGATACTATCCAGTTACCTGCCAAGT
 ATCCAGAATTATTTGCAAACCTGCCCATACGACAAAGAACAGGAATACTGTTGTATGGTCCGCTGGAAC
 AGGAAAAACCTTACTAGCTGGGTAATTGCACGAGAGAGTAGAATGAATTTTATAAGTGTCAAGGGCCA
 GAGTTACTCAGCAAATACATTGGAGCAAGTGAACAAGCTGTTCCGGATATTTTTATTAGAGCACAGGCTG
 CAAAGCCTGCATTCTTTCTTTGATGAATTTGAATCCATTGCTCCTCGCGGGGTGATGATAATACAGG
 AGTTACAGACCGAGTAGTTAACCAGTTGCTGACTCAGTTGGATGGAGTAGAAGGCTTACAGGGTGTAT
 GTATTGGCTGCTACTAGTCGCCCTGACTTGATTGACCCTGCCCTGCTTAGGCCTGGTCTGACTAGATAAT
 GTGTACTGCTCCTCCTGATCAGGTGTCACGTCTTGAATTTTAAATGCTCCTCAGTACTCTCTACC
 TCTGGCAGATGATGTTGACCTTACGATGTAGCATCAGTAACTGACTCCTTACTGGAGCTGATCTGAAA
 GCTTTACTTTACAATGCCAATTGGAGGCTTACATGGAATGCTGCTCTCGAGTGGACTCCAGGATGGAA
 GTTCCAGCTCTGATAGTGACCTAAGTCTGTCTTCAATGTCTTTCTTAACCATAGCAGTGGCTCTGACGA
 TTCAGCTGGAGATGGAGAATGTGGCTTAGATCAGTCCCTTGTCTTTAGAGATGTCGAGATCCTTCCA
 GATGAATCAAAATTCATATGTACCGGCTCTACTTTGGAAGCTCTTATGAATCAGAACTGGAAATGGAA
 CCTCTTCTGATTTGAGCTCACAATGTCTCTCTGCACCAAGCTCCATGACTCAGGATTTGCCTGGAGTTCC
 TGGGAAAGACCAGTTGTTTTACAGCCTCCAGTGTTAAGGACAGCTTACAAGAGGGTTGCCAAGAACTT
 ACACAAGAACAAGAGATCAACTGAGGGCAGATATCAGTATTATCAAAGGCAGATACCGGAGCCAAAGTG
 GAGAGGACGAATCCATGAACCAACCAGGACCAATCAAACCAGACTGGCTATTAGTCAGTCACATTTAAT
 GACTGCCACTTGGTCACACAAGACCATCCATTAGTGAAGATGACTGGAAGAATTTGCTGAGCTATATGAA
 AGCTTTCAAAATCCAAAGAGGAGAAAAAATCAAAGTGGACAATGTTTCGACCTGGACAGAAAGTAACTT
 TAGCA

AGCGGACCGACGCGTACGCGGCCGCTCGAGCAGAACTCATCTCAGAAGAGGATCTGGCAGCAAATGATATCC
 TGGATTACAAGGATGACGACGATAAGGTTTAA

Protein Sequence:

>RC239939 representing NM_001282678
 Red=Cloning site Green=Tags(s)

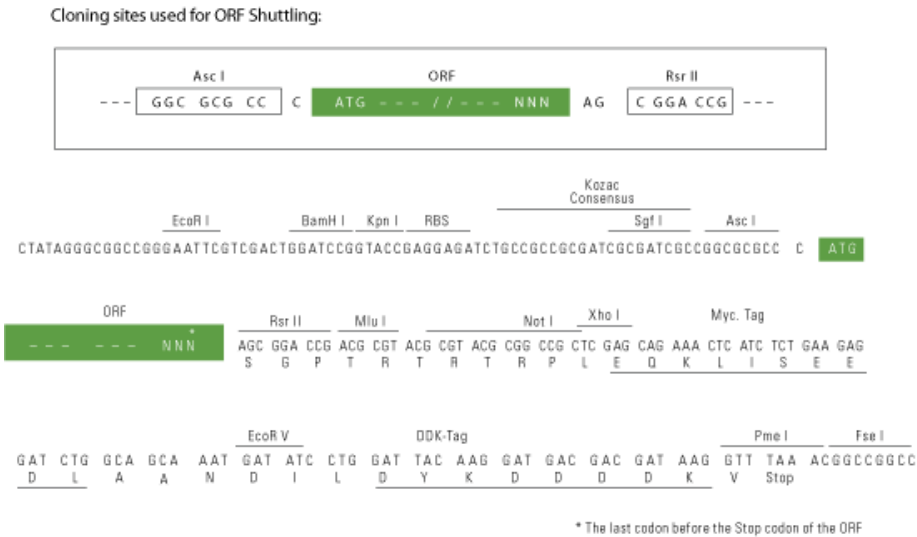
MMKELQTKQLQSNVTGITESNENESEIPVDSSSVASLWTMIGSIFSFQSEKKQETSWGLTEINAFKNMQS
 KVVPLDNI FRVCKSQPPSIYNASATSVFHKHCAIHVFPWDQEYFDVEPSFTVYTGKLVKLLSPKQQSKT
 KQNVLSPEKEKQ MSEPLDQKKIRSDHNEEDEKACV LQVVWNGLEELNNAIKYTKNVEVLHLGKVVIPDDL
 RKRLNIEMHAVVRITPVEVTPKIPRSLKLPRENLPKDI SEEDIKTVFYSWLQQSTTTMLPLVISEE EFI
 KLETKDGLKEFSLSIVHSWEKEKDKNIFLLSPNLLQKTTIQVLLDPMVKEENSEEIDFILPFLKLSLGG
 VNSLGVSSLEHITHSLLGRPLSRQLMSLVAGLRNGALLTGGKSGKSTLAKAICKEAFDKLDAHVERVD
 CKALRGKRL ENIQKTLEVA FSEAVWMQPSVLLDDLDL IAGLPVPEHEHSPDAVQSQR LAHALNDMIKE
 FISMGSLVALIATSQSQQSLHPLLVS AQGVHIFQCVQHIQPPNQEQRCEILCNVIKNKLD CDINKFTDL D
 LQHVAKETGGFVARDFTVLVDRAIHSRLSRQSI STREKLVLTTLDFQKALRGFLPASLRSVNLHKPRDLG
 WDKIGGLHEVRQILMDTIQLPAKYPELFANLP IRQRTGILLYGPPTGKTL LAGVIARESRMNFI SVKGP
 ELLSKYIGASEQAVRDI FIRAQA AKPCILFFDEFESIAPRRGHNTGVTD RRVNQLL TQLDGV EGLQGVY
 VLAATSRPDLIDPALLRPGRLDKCVYCP PPDQVSRLEILNVLSDSLPLADDVDLQHVASVTD SFTGADLK
 ALLYNAQLEALHGMLLSSGLQDGS SSSSDSLSSMVFLNHSSGSDSAGDGECGLDQSLV SLEMSEILP
 DESKFNMYRLYFGSSYESELNGTSSDLSSQCL SAPSSMTQDLPGVPGKDQLFSQPPVLR T ASQEGCQEL
 TQEQRDQLRADISIIKGRYRSQSGEDES MNQPGPIKTRLAISQSHLMTALGHTRPSI SEDDWKNFAELYE
 SFQNPKRKRKNQSGTMFRPGQVTLA

SGP TRTRPLEQKLI SEEDLAANDILDYKDDDDKV

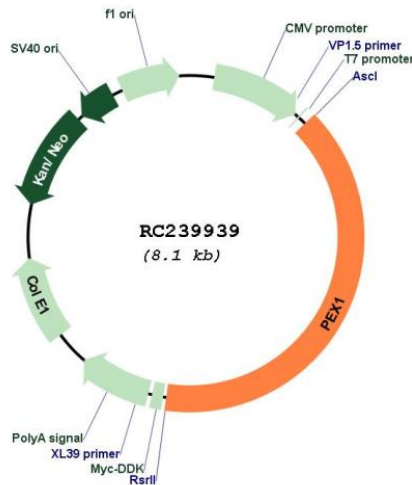
Restriction Sites:

Ascl-RsrII

Cloning Scheme:



Plasmid Map:



ACCN: NM_001282678

ORF Size: 3225 bp

OTI Disclaimer: The molecular sequence of this clone aligns with the gene accession number as a point of reference only. However, individual transcript sequences of the same gene can differ through naturally occurring variations (e.g. polymorphisms), each with its own valid existence. This clone is substantially in agreement with the reference, but a complete review of all prevailing variants is recommended prior to use. [More info](#)

OTI Annotation: This clone was engineered to express the complete ORF with an expression tag. Expression varies depending on the nature of the gene.

Components:	The ORF clone is ion-exchange column purified and shipped in a 2D barcoded Matrix tube containing 10ug of transfection-ready, dried plasmid DNA (reconstitute with 100 ul of water).
Reconstitution Method:	<ol style="list-style-type: none">1. Centrifuge at 5,000xg for 5min.2. Carefully open the tube and add 100ul of sterile water to dissolve the DNA.3. Close the tube and incubate for 10 minutes at room temperature.4. Briefly vortex the tube and then do a quick spin (less than 5000xg) to concentrate the liquid at the bottom.5. Store the suspended plasmid at -20°C. The DNA is stable for at least one year from date of shipping when stored at -20°C.
RefSeq:	<u>NM_001282678.2</u>
RefSeq Size:	4427 bp
RefSeq ORF:	3228 bp
Locus ID:	5189
UniProt ID:	<u>O43933</u>
Cytogenetics:	7q21.2
Protein Families:	Druggable Genome
MW:	120.1 kDa
Gene Summary:	This gene encodes a member of the AAA ATPase family, a large group of ATPases associated with diverse cellular activities. This protein is cytoplasmic but is often anchored to a peroxisomal membrane where it forms a heteromeric complex and plays a role in the import of proteins into peroxisomes and peroxisome biogenesis. Mutations in this gene have been associated with complementation group 1 peroxisomal disorders such as neonatal adrenoleukodystrophy, infantile Refsum disease, and Zellweger syndrome. Alternatively spliced transcript variants have been found for this gene. [provided by RefSeq, Sep 2013]