

## Product datasheet for **RC239840**

### **NLRX1 (NM\_001282358) Human Tagged ORF Clone**

#### **Product data:**

Product Type:	Expression Plasmids
Product Name:	NLRX1 (NM_001282358) Human Tagged ORF Clone
Tag:	Myc-DDK
Symbol:	NLRX1
Synonyms:	CLR11.3; DLNB26; NOD5; NOD9; NOD26
Mammalian Cell Selection:	Neomycin
Vector:	pCMV6-Entry (PS100001)
E. coli Selection:	Kanamycin (25 ug/mL)



[View online »](#)

**ORF Nucleotide Sequence:**

>RC239840 ORF sequence  
 Red=Cloning site Blue=ORF Green=Tags(s)

TTTTGTAATACGACTCACTATAGGGCGGCCGGGAATTCGTCGACTGGATCCGGTACCGAGGAGATCTGCC  
 GCC**CGGATCGCC**

ATGAGGTGGGGCCACCATTGCCCAGGGCCTCTGGGGCTCTGGTTTTAGAAGAGCACTCCAGCGACCAG  
 ATGATCGTATCCCTTCCTGATCCACTGGAGTTGGCCCTTCAAGGGGAGCGTCCCTTTGGGCCCCCTAG  
 GGCTTTATACGCCACCACGGAAGCTCGGTAGATAGCGCTCCCCACCCGGGAGGCATGGACGGCTGTTCC  
 CCCAGCGCCTCTGCAACTGAAGCTATACAGCGCACCCGCCGAACCTGGCTGAGTGGTTACAGCCGGCTGC  
 CCAGGGAGGAGCGCCAGTTTGGCCCAACCTTGGCCTAGACACGGTCCACGTTGACCCTGTGATCCGCGA  
 GAGTACCCTGATGAGCTACTTCGCCACCCCGGGAGCTGGCCCTGGAGCATCAGCCACCCAGGCCGGG  
 CTCCTCCACTGGCCTTGTCTCAGCTCTTAACCCGGATGCTGTGGGCGCCGGTGCAGACAGTGGTGC  
 TGTATGGGACAGTGGGCACAGGCAAGAGCACGCTGGTGGCAAGATGGTTCTGGACTGGTGTATGGGCG  
 GCTGCCGGCCTCGAGCTGCTCATCCCTTCTCCTGTGAGGACCTGTCATCCCTGGGCCCTGCCACGCC  
 TCCTGTGCCAACTTGTGGCCCAGCGCTACACGCCCTGAAGGAGTTCTGCCCTGATGGCTGCTGCTG  
 GGTCCACCTCCTCTTTGTGCTCCATGGCTTAGAGCATCTCAACCTCGACTTCCGGCTGGCAGGCACGGG  
 ACTTTGTAGTGACCCGGAGGAACCGCAGGAACAGCTGCTATCATCGTCAACCTGCTGCGCAATACATG  
 CTGCCCTCAGGCCAGCATTCTGGTGACCACTCGGCCCTCTGCCATTGGCCGTATCCCAGCAAGTACGTGG  
 GCCGCTATGGTGAGATCTGCGGTTTCTCTGATACCAACCTGCAGAAGCTCTACTTCCAGCTCCGCCTCAA  
 CCAGCCGTAAGTGGGATGCGGTTTGGCGTTGAGGTGTCTGTCCACACCAGCTCAGCGTGACCACCTG  
 GTGCAGATGCTCTCCCGAACCTGGAGGGGCACCACAGATAGCCGCTGCCTGCTTCTGCCGTCTATT  
 GCTGGCTCGTTTGTGCCACCTTGCACTTCTGTCATGCCCCACGCCTGCTGGGCAGACCTTACAAGCAT  
 CTATACCAGCTTCTGCGCCTCAACTTCAGCGGGGAAACCTGGACAGCACTGACCCCTCCAATTTGTCC  
 CTGATGGCCTATGCAGCCGAACCATGGCAAGTTGGCCTATGAGGGGGTGTCTCCCGCAAGACCTACT  
 TCTCTGAAGAGGATGTCTGTGGCTGCCTGGAGGCTGGCATCAGGACGGAGGAGGAGTTTTCAGCTGTGCA  
 CATCTTCCGTGCGGATGCCCTGAGGTTTTTCTGGCCCCATGTGTGGAGCCAGGGCGTGCAGGCACCTTC  
 GTGTTACCGTGCCCGCCATGCAGGAATACCTGGCTGCCCTCTACATTGTGCTGGGTTTGGCAAGACGA  
 CCCTGCAAAGGTGGGCAAGGAAGTGGCTGAGCTCGTGGCCGTGTTGGGGAGGAGCTCAGCCTGGTACT  
 GGGCATCATGGCCAAGCTGCTGCCTCTGCGGGCTCTGCCTCTGCTTCAACCTGATCAAGTGGTTCCA  
 CGAGTGTGGGGCATGGTGGGTAAGAGCCGGGAGGCGGTGGCTCAGGCCATGGTGTGGAGATGTTTC  
 GAGAGGAGGACTACTACAACGATGATGTTCTGGACCAGATGGGCGCCAGTATCCTGGGCGTGGAGGGCCC  
 CCGGCGCCACCCAGATGAGCCCCCTGAGGATGAAGTCTTCGAGCTCTCCCATGTTTCATGGGGGGCTT  
 CTCTGCCCCACAACCGAGCTGTGCTAGCTCAGCTTGGCTGCCCATCAAGAACCTGGATGCCCTGGAGA  
 ATGCCAGGCCATCAAGAAGAAGCTGGGCAAGCTGGGCGGCAGGTGCTGCCCATCAGAGCTCCTTGA  
 CCACCTCTTCCACTATGAGTTCAGAACAGCGCTTCTCCGTGAGGTGCTCAGCTCCCTGCGTCAG  
 CTCAACCTGGCAGGTGTGCGCATGACACCAGTCAAGTGCACAGTGGTGGCAGCTGTGCTGGGCAGCGGAA  
 GGCATGCCCTGGATGAGGTGAACCTGGCCTCTGCCAGCTAGATCCTGCTGGGCTGCGCACACTCCTGCC  
 TGTCTTCCGTGCGTCCCGGAAGCTGGGTTGCAACTCAACAGCCTGGGCCCTGAGGCTGCAAGGACCTC  
 CGAGACCTGTTGCTGCATGACCAGTGCCAAATTACCACACTGCGGCTGTCCAACAACCCGCTGACGGCGG  
 CAGGTGTTGCCGTGCTAATGAGGGGCTGGCAGGAAACCTCAGTGACGCACCTGTCCCTGCTGCACAC  
 GGGCCTTGGGACGAAGGCTGGAGCTGTGGCTGCCAGCTGGACCGCAACCGGACGCTGCAGGAGCTG  
 AACGTGGCGTACAACGGTGTGGTGACACAGCGGCCCTGGCCCTGGCCAGAGCTGCCCGGAGCACCCCTT  
 CCCTGGAAGTGTACACCTCTACTTCAATGAGCTGAGCTCAGAGGGCCGCCAGGTCTTGCAGACTTGGG  
 GGGTGTGCTGAAGTGGTGGCCGGTGGTGGTGTACTGACAGAGGGGACGGCGGTGTCAGAATACTGG  
 TCAGTGATCCTCAGTGAAGTCCAGCGGAACCTCAATAGCTGGGATCGGGCCGGGTTTCAGCGACACCTG  
 AGCTCCTACTGCGGGATCTGGAAGATAGCCGGGTGCCACCTTAATCCTTGGCGCAAGGCCAGCTGCT  
 GCGAGTGGAGGGGAGGTGAGGGCCCTCTGGAGCAGCTGGGAAGCTCTGGAAGC

**ACGCGT**ACGCGGCCGCTCGAGCAGAAACTCATCTCAGAAGAGGATCTGGCAGCAAATGATATCCTGGATT  
 ACAAGGATGACGACGATAAGGTTTAA

Protein Sequence: >RC239840 protein sequence  
 Red=Cloning site Green=Tags(s)

MRWGHHLPRASWGSFRRALQRPDDRIPFLIHWSWPLQGERPFGPPRAFIRHHGSSVDSAPPPGRHGRLF  
 PSASATEAIQRHRRNLAEFWSRLPREERQFGPTFALDTHVVDPIRESTPDELLRPPAELALEHQPQAG  
 LPPLALSQLFNPDACGRRVQTVVLYGTGTGKSTLVRKMLVDWCYGRLPAFELLIPFSCEDLSSLGPAPA  
 SLCQLVAQRYTPLKEVLPMAAAGSHLLFVLHGLEHLNLDLDFRLAGTGLCSDPPEEPQEPAAIIVNLLRKYM  
 LPQASILVTRPSAIGRIPSKYVGRYGEICGFSDTNLQKLYFQLRLNQPYCGYAVGSGSVATPAQRDHL  
 VQMLSRNLEGHQIAAACFLPSYCWLVCATLHFLHAPTPAGQTLTSIYTSFLRLNFSGETLDSTDPNSLS  
 LMAYAARTMGKLAYEGVSSRKTYFSEEDVCGCLEAGIRTEEEFQLLHIFRRDALRFFLAPCPEPGRAGTF  
 VFTVPAMQEYLAALYIVLGLRKTTLQKVGKEVAELVGRVGEDVSLVLGIMAKLLPLRALPLLNLIKVVP  
 RVFGRMVGKSREAVAQAMVLEMFREEDYNDVLDQMGASILGVEGPRRHPDEPPEDEVFELPFMFMGGL  
 LSAHNRAVLAQLGCPKIKNLDAENAQAIAKKLGLKGRQVLPSELLDHLFFHYEFQNRFSAEVLSLRQ  
 LNLAGVRMTPVKCTVVAAVLGSGRHALDEVNLASCQLDPAGLRTLLPVFLRARKLGLQLNSLGPEACKDL  
 RDLLLHDQCQITTLRLSNNPLTAAVAVLMEGLAGNTSVTHLSLLHTGLGDEGLELLAAQLDRNRQLQEL  
 NVAYNGAGDTAALALARAAREHPSLELLHLYFNELSSEGRQVLRDLGAAEGGARVVVSLTEGTAVSEYM  
 SVILSEVQRNLSWDRARVQRHLELLLRLDLEDSRGATLNPWRKAQLLRVEGEVRALLEQLGSSGS

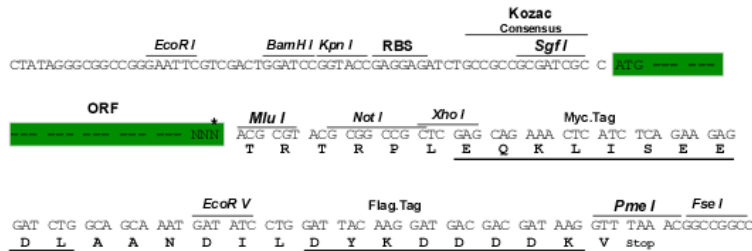
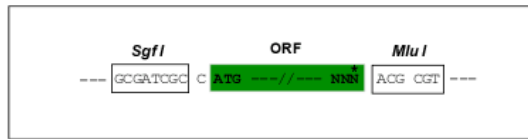
TRTRPLEQKLISEEDLAANDILDYKDDDDKV

Chromatograms: [https://cdn.origene.com/chromatograms/mk6140\\_h12.zip](https://cdn.origene.com/chromatograms/mk6140_h12.zip)

Restriction Sites: SgfI-MluI

Cloning Scheme:

Cloning sites used for ORF Shuttling:



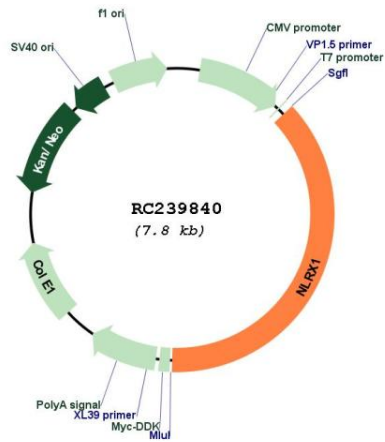
\* The last codon before the Stop codon of the ORF

ACCN: NM\_001282358

ORF Size: 2925 bp

<b>OTI Disclaimer:</b>	The molecular sequence of this clone aligns with the gene accession number as a point of reference only. However, individual transcript sequences of the same gene can differ through naturally occurring variations (e.g. polymorphisms), each with its own valid existence. This clone is substantially in agreement with the reference, but a complete review of all prevailing variants is recommended prior to use. <a href="#">More info</a>
<b>OTI Annotation:</b>	This clone was engineered to express the complete ORF with an expression tag. Expression varies depending on the nature of the gene.
<b>Components:</b>	The ORF clone is ion-exchange column purified and shipped in a 2D barcoded Matrix tube containing 10ug of transfection-ready, dried plasmid DNA (reconstitute with 100 ul of water).
<b>Reconstitution Method:</b>	<ol style="list-style-type: none"> <li>1. Centrifuge at 5,000xg for 5min.</li> <li>2. Carefully open the tube and add 100ul of sterile water to dissolve the DNA.</li> <li>3. Close the tube and incubate for 10 minutes at room temperature.</li> <li>4. Briefly vortex the tube and then do a quick spin (less than 5000xg) to concentrate the liquid at the bottom.</li> <li>5. Store the suspended plasmid at -20°C. The DNA is stable for at least one year from date of shipping when stored at -20°C.</li> </ol>
<b>RefSeq:</b>	<a href="#">NM_001282358.1</a> , <a href="#">NP_001269287.1</a>
<b>RefSeq Size:</b>	3682 bp
<b>RefSeq ORF:</b>	2928 bp
<b>Locus ID:</b>	79671
<b>UniProt ID:</b>	<a href="#">Q86UT6</a>
<b>Cytogenetics:</b>	11q23.3
<b>Protein Pathways:</b>	RIG-I-like receptor signaling pathway
<b>MW:</b>	107.6 kDa
<b>Gene Summary:</b>	The protein encoded by this gene is a member of the NLR family and localizes to the outer mitochondrial membrane. The encoded protein is a regulator of mitochondrial antiviral responses. Three transcript variants encoding the same protein have been found for this gene. [provided by RefSeq, Aug 2013]

Product images:



Circular map for RC239840