

Product datasheet for **RC239839**

NLRX1 (NM_001282144) Human Tagged ORF Clone

Product data:

Product Type:	Expression Plasmids
Product Name:	NLRX1 (NM_001282144) Human Tagged ORF Clone
Tag:	Myc-DDK
Symbol:	NLRX1
Synonyms:	CLR11.3; DLNB26; NOD5; NOD9; NOD26
Mammalian Cell Selection:	Neomycin
Vector:	pCMV6-Entry (PS100001)
E. coli Selection:	Kanamycin (25 ug/mL)



[View online »](#)

ORF Nucleotide
Sequence:

>RC239839 ORF sequence
Red=Cloning site Blue=ORF Green=Tags(s)

TTTTGTAATACGACTCACTATAGGGCGGCCGGGAATTCGTCGACTGGATCCGGTACCGAGGAGATCTGCC
GCC**CGGATCGCC**

ATGAGGTGGGGCCACCATTGCCCAGGGCCTCTGGGGCTCTGGTTTTAGAAGAGCACTCCAGCGACCAG
ATGATCGTATCCCTTCCTGATCCACTGGAGTTGGCCCTTCAAGGGGAGCGTCCCTTTGGGCCCTAG
GGCCTTTATACGCCACCACGGAAGCTCGGTAGATAGCGCTCCCCACCCGGGAGGCATGGACGGCTGTT
CCCAGCGCCTCTGCAACTGAAGCTATACAGCGCACCCGCCGAACCTGGCTGAGTGGTTCAGCCGGCTGC
CCAGGGAGGAGCGCCAGTTTGGCCCAACCTTGGCCTAGACACGGTCCACGTTGACCCTGTGATCCGCGA
GAGTACCCTGATGAGCTACTTCGCCACCCCGGGAGCTGGCCCTGGAGCATCAGCCACCCAGGCCGGG
CTCCCCCACTGGCCTTGTCTCAGCTCTTAACCCGGATGCTGTGGGCGCCGGTGCAGACAGTGGTGC
TGATATGGGACAGTGGGCACAGGCAAGAGCACGCTGGTGGCAAGATGGTCTGGACTGGTGTATGGGCG
GCTGCCGGCCTTCGAGCTGCTCATCCCTTCTCCTGTGAGGACCTGTCATCCCTGGGCCCTGCCACGCC
TCCTGTGCCAACTTGTGGCCACGCGCTACACGCCCTGAAGGAGTTCTGCCCTGATGGCTGCTGCTG
GGTCCACCTCCTCTTTGTGCTCCATGGCTTAGAGCATCTCAACCTCGACTTCCGGCTGGCAGGCACGGG
ACTTTGTAGTGACCCGGAGGAACCGCAGGAACAGCTGCTATCATCGTCAACCTGCTGCGCAATACATG
CTGCCTCAGGCCAGCATTCTGGTGACCACTCGGCCCTCTGCCATTGGCCGTATCCCAGCAAGTACGTGG
GCCGCTATGGTGAGATCTGCGGTTTTCTGTATACCAACCTGCAGAAGCTCTACTTCCAGCTCCGCCTCAA
CCAGCCGTAAGTGGGATGCGGTTTGGCGGTTGAGGTGTCTGTCCACACCAGCTCAGCGTGACCACCTG
GTGCAGATGCTCTCCCGAACCTGGAGGGGCACCACAGATAGCCGCTGCCTGCTTCTGCCGCTCAATT
GCTGGCTCGTTTTGTGCCACCTTGCACTTCTGTCATGCCCCACGCTGCTGGGCAGACCTTACAAGCAT
CTATACCAGCTTCTGCGCCTCAACTTCAGCGGGGAAACCTGGACAGCACTGACCCTCCAATTTGTCC
CTGATGGCCTATGCAGCCGAACCATGGCAAGTTGGCCTATGAGGGGGTGTCTCCCGCAAGACCTACT
TCTCTGAAGAGGATGTCTGTGGCTGCCTGGAGGCTGGCATCAGGACGGAGGAGGAGTTTTCAGCTGTGCA
CATCTTCCGTGCGGATGCCCTGAGGTTTTCTGGCCCCATGTGTGGAGCCAGGGCGTGCAGGCACCTTC
GTGTTACCGTGCCCGCCATGCAGGAATACCTGGCTGCCCTCTACATTGTGCTGGGTTTGGCAAGACGA
CCCTGCAAAGGTGGGCAAGGAAGTGGCTGAGCTCGTGGCCGTGTTGGGGAGGACGTCAGCCTGGTACT
GGGCATCATGGCCAAGCTGCTGCCTCTGCGGGCTCTGCCTCTGCTTCAACCTGATCAAGTGGTTCGA
CGAGTGTGGGGCATGGTGGGTAAGAGCCGGGAGGCGGTGGCTCAGGCCATGGTGTGGAGATGTTTC
GAGAGGAGGACTACTACAACGATGATGTTCTGGACCAGATGGGCGCCAGTATCCTGGGCGTGGAGGGCC
CCGGCGCCACCCAGATGAGCCCCCTGAGGATGAAGTCTTCGAGCTCTCCCATGTTTCATGGGGGGCTT
CTCTGCCCCACAACCGAGCTGTGCTAGCTCAGCTTGGCTGCCCATCAAGAACCTGGATGCCCTGGAGA
ATGCCAGGCCATCAAGAAGAAGCTGGGCAAGCTGGGCGGCAGGTGCTGCCCATCAGAGCTCCTTGA
CCACCTCTTCCACTATGAGTTCAGAACAGCGCTTCTCCGCTGAGGTGCTCAGCTCCCTGCGTCAG
CTCAACCTGGCAGGTGTGCGCATGACACCAGTCAAGTGCACAGTGGTGGCAGCTGTGCTGGGCAGCGAA
GGCATGCCCTGGATGAGGTGAACCTGGCCTCTGCCAGCTAGATCCTGCTGGGCTGCGCACACTCCTGCC
TGCTTCCCTGCGTGCCCGGAAGCTGGGCTTGAACCTCAACAGCTGGGCCCTGAGGCTGCAAGGACCTC
CGAGACCTGTTGCTGCATGACCAGTGCCAAATTACCACACTGCGGCTGTCCAACAACCCGCTGACGGCGG
CAGGTGTTGCCGTGCTAATGAGGGGGCTGGCAGGAAACCTCAGTGACGCACCTGTCCCTGCTGCACAC
GGGCTTGGGGACGAAGGCTGGAGCTGTGGCTGCCAGCTGGACCGCAACCGGACGCTGCAGGAGCTG
AACGTGGCGTACAACGGTGTGGTGACACAGCGGCCCTGGCCCTGGCCAGAGCTGCCCGGAGCACCCCTT
CCCTGGAAGTGTACACCTCTACTTCAATGAGCTGAGCTCAGAGGGCCGCCAGGTCTTGCAGACTTGGG
GGGTGCTGCTGAAGTGGTGGCCGGTGGTGGTGTACTGACAGAGGGGACGGCGGTGTCAGAATACTGG
TCAGTGATCCTCAGTGAAGTCCAGCGGAACCTCAATAGCTGGGATCGGGCCGGGTTTCAGCGACACCTG
AGCTCCTACTGCGGGATCTGGAAGATAGCCGGGTGCCACCTTAATCCTTGGCGCAAGGCCAGCTGCT
CGGAGTGGAGGGGAGGTGAGGGCCCTCTGGAGCAGCTGGGAAGCTCTGGAAGC

ACGCGTACGCGGCGGCTCGAGCAGAACTCATCTCAGAAGAGGATCTGGCAGCAAATGATATCCTGGATT
ACAAGGATGACGACGATAAGGTTTAA

Protein Sequence: >RC239839 protein sequence
Red=Cloning site Green=Tags(s)

```
MRWGHHLPRASWGSFRRALQRPDDRIPFLIHWSWPLQGERPFGPPRAFIRHHGSSVDSAPPPGRHGRLF
PSASATEAIQRHRRNLAEFWSRLPREERQFGPTFALDTHVVDPIRESTPDELLRPPAELALEHQPQAG
LPPLALSQLFNPDACGRRVQTVVLYGTGTGKSTLVRKMLVDWCYGRLPAFELLIPFSCEDLSSLGPAPA
SLCQLVAQRYTPLKEVLPMAAAGSHLLFVLHGLEHLNLDLDFRLAGTGLCSDPPEEPQEPAAIIVNLLRKYM
LPQASILVTRPSAIGRIPSKYVGRYGEICGFSDTNLQKLYFQLRLNQPYCGYAVGSGSVATPAQRDHL
VQMLSRNLEGHQIAAACFLPSYCWLVCATLHFLHAPTPAGQTLTSIYTSFLRLNFSGETLDSTDPNSLS
LMAYAARTMGKLAYEGVSSRKTYFSEEDVCGCLEAGIRTEEEFQLLHIFRRDALRFFLAPCPEPGRAGTF
VFTVPAMQEYLAALYIVLGLRKTTLQKVGKEVAELVGRVGEDVSLVLGIMAKLLPLRALPLLNLIKVVP
RVFGRMVGKSREAVAQAMVLEMFREEDYNDVLDQMGASILGVEGPRRHHPDEPPEDEVFELPFMFMGGL
LSAHNRAVLAQLGCPKIKNLDAENAQAIAKKKLGKLRQVLPPELDDLHFFHYEFQNRFSAEVLSLRQ
LNLAGVRMTPVKCTVVAAVLGSGRHALDEVNLASCQLDPAGLRLLPVFLRARKLGLQLNSLGPEACKDL
RDLLLHDQCQITTLRLSNNPLTAAGVAVLMEGLAGNTSVTHLSLLHTGLGDEGLELLAAQLDRNRQLQEL
NVAYNGAGDTAALALARAAREHPSLELLHLYFNELSSSEGRQVLRDLGAAEGGARVVVSLTEGTAVSEYM
SVILSEVQRNLSWDRARVQRHLELLLRLDLEDSRGATLNPWRKAQLLRVEGEVRALLEQLGSSGS
```

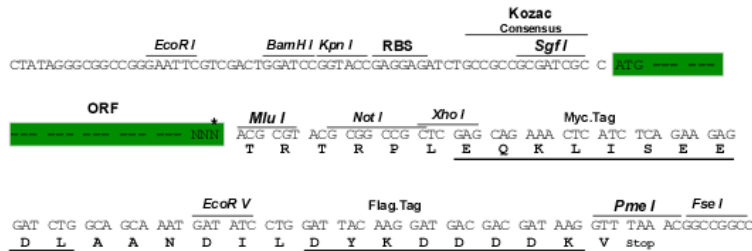
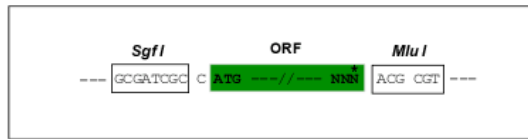
TRTRPLEQKLISEEDLAANDILDYKDDDDKV

Chromatograms: https://cdn.origene.com/chromatograms/mk6140_h12.zip

Restriction Sites: SgfI-MluI

Cloning Scheme:

Cloning sites used for ORF Shuttling:



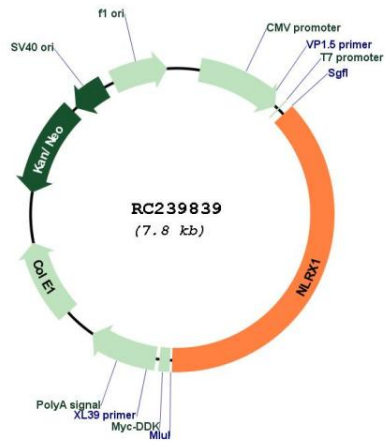
* The last codon before the Stop codon of the ORF

ACCN: NM_001282144

ORF Size: 2925 bp

OTI Disclaimer:	The molecular sequence of this clone aligns with the gene accession number as a point of reference only. However, individual transcript sequences of the same gene can differ through naturally occurring variations (e.g. polymorphisms), each with its own valid existence. This clone is substantially in agreement with the reference, but a complete review of all prevailing variants is recommended prior to use. More info
OTI Annotation:	This clone was engineered to express the complete ORF with an expression tag. Expression varies depending on the nature of the gene.
Components:	The ORF clone is ion-exchange column purified and shipped in a 2D barcoded Matrix tube containing 10ug of transfection-ready, dried plasmid DNA (reconstitute with 100 ul of water).
Reconstitution Method:	<ol style="list-style-type: none"> 1. Centrifuge at 5,000xg for 5min. 2. Carefully open the tube and add 100ul of sterile water to dissolve the DNA. 3. Close the tube and incubate for 10 minutes at room temperature. 4. Briefly vortex the tube and then do a quick spin (less than 5000xg) to concentrate the liquid at the bottom. 5. Store the suspended plasmid at -20°C. The DNA is stable for at least one year from date of shipping when stored at -20°C.
RefSeq:	NM_001282144.2
RefSeq Size:	4158 bp
RefSeq ORF:	2928 bp
Locus ID:	79671
UniProt ID:	Q86UT6
Cytogenetics:	11q23.3
Protein Pathways:	RIG-I-like receptor signaling pathway
MW:	107.6 kDa
Gene Summary:	The protein encoded by this gene is a member of the NLR family and localizes to the outer mitochondrial membrane. The encoded protein is a regulator of mitochondrial antiviral responses. Three transcript variants encoding the same protein have been found for this gene. [provided by RefSeq, Aug 2013]

Product images:



Circular map for RC239839