

Product datasheet for **RC239770**

NFXL1 (NM_001278624) Human Tagged ORF Clone

Product data:

Product Type:	Expression Plasmids
Product Name:	NFXL1 (NM_001278624) Human Tagged ORF Clone
Tag:	Myc-DDK
Symbol:	NFXL1
Synonyms:	CDZFP; HOZFP; OZFP; URCC5
Mammalian Cell Selection:	Neomycin
Vector:	pCMV6-Entry (PS100001)
E. coli Selection:	Kanamycin (25 ug/mL)



[View online »](#)

ORF Nucleotide Sequence:

>RC239770 ORF sequence
 Red=Cloning site Blue=ORF Green=Tags(s)

TTTTGTAATACGACTCACTATAGGGCGGCCGGGAATTCGTCGACTGGATCCGGTACCGAGGAGATCTGCC
 GCC**CGGATCGCC**

ATGGAAGCTTCCTGGCGCCAGGTGGCCGGTGGCCGAGGCCGATCCCGGGACGGGCCACTGCCGCCCCCT
 CAGGAAATGGAGTCCATCTCCGCGCGCCGGAGGAGGGCGAGAGAAGGGTTCGGTGGCGCAGTTCCCTTC
 TGGCACCAGTCCCGGAGGAGTCCGACACGGCGCTGCAGGGAGCAGGCACAGCCCGCAGGATCCCAA
 GCCCTGCAGACTACCGCAGCCAGCGAGCTAATGTCTCAGAAAAATTTGAAGAAATCAAGAAAGCTAACC
 AAGCTGCAGCCAGAAAATTGTTGAAGAACAGTTAGCTCTTCATCTGAAGAAGGAGATGAAGATTTTGA
 AGGAAAACAGGAAAAATACTTGCAATACGTTTATAACATACACTACTCAGACAGATGGAGATACACGT
 GAATTAGAGCGAACAACAATATGTAATGAAGCTTTTCAAGCAGGGGCTATGACATGCCTAATTTGTA
 TTGCTTCGGTGAAGAGAAACCAAGCAGTTTGGAGCTGTCGGGATGTTTCTGTATATTTCCATGCCCTG
 TATCCAGAAGTGGGCTAAAGACAGCCAGTTTCTGTATCTTCTGTGACTGATGATGATTTTGGAAAGAAA
 GATTGTCCCTGGCCTTGCCAAAATGTAGTTTGAATACAAACGATCTGAAACACCTAGTAGGTACTATT
 GCTATTGTGAAAAGTAGAAGATCCACCTTTAGATCCGTGGCTTGTGCCTCATTTCATGTGGCCAAGTATG
 TGAGCGTGAATTTAAACCTCCTTGTGGCCATAAATGTTTACTCCTCTGTCATCCAGTCCCTGCCCTCCT
 TGTCCAAAGATGGTCACAACACTTGTACTGTAAAGAAAGCAAAACCTATCCCTCGTAGGTGCAGTGCCA
 AGGAATGGTCTTGTGACGTGCCATGTGGACAGAAGTTGCTTTGTGGGCAACATAAGTGTGAAAATCCTTG
 TCATGCAGGAAGTGTGACGCTTGTCCAAGAGTTAGTAGACAAAAGTGTGTCTGTGGCAAAAAGTAGCT
 GAAAGAAGTTGTCAAGTCCACTATGGCACTGTGATCAAGTATGTGAAAAAACTGCCATGTGGTAATC
 ACACATGTGAGCAAGTTGCCATGTTGGTGTGTTGGAGAATGTCTCGATCTGGGAAAAGTTCTGTCTC
 ATGTCAGAAATCAAAGTTTTCTTTGCCTTGTACAGAAGATGTACCAACTTGTGGAGACAGTTGTGACAAA
 GTACTTGAATGCGGAATCCATAGATGTTTACAGCGTTGTCACCGAGGTCCTGTGAAACATGTAGACAAG
 AAGTGGAAAAGCATTGTCGCTGTGGAAAGCATACAAAACGAATGCCTTGTGATAAACCTTATCTGTGTGA
 AACTAAGTGTGTTAAGATGCGTACTGTGAGAAGCATCAATGTAGAAGAAAGTGTGCCCTGGAAACTGT
 CCACCTTGTGATCAAACTGTGGACGGACTTTAGGATGTAGAACCATAAGTGTCCATCTGTCTGCACA
 GAGGCAGTTGCTATCCCTGCCAGAAACCGTAGATGTGAAGTGTAAATGTGGCAATACAAAGGTGACAGT
 GCCCTGTGGCCGAGAACGTACCACAAGACCACCAAGTGAAGGAGCAATGCAGTCGACCACCAACTTGT
 CATCATACAAGTCAAGAAAAACATCGCTGTCACTTTGGTCTTGTCCACCATGTCACTCACTTGCACAA
 AAGTTTTGGAGAAATGTGGTCACTTGTGTCCTGCTCCGTGTCATGATCAAGCATTATAAAGCAGACTGG
 CAGGCACACGCTACAGGCCCTTGGAAACGCCTTCTGAGCCAGCATTTATTCAGACTGCATTACCGTGT
 CCTCCATGTCAAGTTCCTATTCCATGGAATGTCTTGGGAAACATGAGGTGAGTCCACTACCATGCCATG
 CTGTAGGACCCTACTCTGTAAAAGAGTTTGTGGAAAGATCTTGGATTGTGAGAAATCACACATGTATGAA
 AGAATGCCACAAAGTAACCAAACTGATGGCTGCACTGGAAAAACAAGGCTGGCCGAGAATGCCTTCAT
 TGTGAGGAAGGGTGTCCAAGTACGGCCACTAGTGTCTTACCCATGATTTTGGCATGTACCCTG
 GAGAATGTCCACCTTGTGTTGAGATGCTTAGAATAAAATGTCAGTGAAGATCACAAAGCCTGTATGTGGA
 ATGTAGAAAAATAACACAGCTGATGTAATGAAAAGAACCTCCTCAGTTGTTGCAAAAATCAGTGCCCT
 AAAGAGCTTCCTTGTGGTCATAGATGCAAGAGATGTGTATCCTGGTGAATGTCCCTTTAACTGCAACC
 AGAAGGTAAAACCTAGATGTCCTTGTAAAAAATAAAAAAGGAATTGCAGTGAACAAAGTACGTGAAAA
 TCAGGTTTCAATAGAATGTGACACAACGTGCAAGGAAATGAAGCGGAAAGCATCTGAGATAAAAGAAGCA
 GAAGCCAAAGCTGCTCTTGAAGAAGAAAAACGAAGACAACAGGCTGAACTAGAAGCTTTTAAAAACAGAC
 TGAAGGGTCGTCGGAAGAAGAACAGGAAAAGAGATGAAGTGGCAGTTGAGCTATCACTATGGCAAAAACA
 TAAATATTATCTCATTTCAGTGTGTGGAGTTGTGGTTGTAGTGTTCCTGGTACATACCCCATGATGTC
 AAT

ACGCGTACGCGGCCGCTCGAGCAGAAACTCATCTCAGAAGAGGATCTGGCAGCAAATGATATCCTGGATT
 ACAAGGATGACGACGATAAAGTTTAA

Protein Sequence: >RC239770 protein sequence
 Red=Cloning site Green=Tags(s)

```
MEASWRQVAGGRGRSRGRATAAPSGNGVHLRGAGGGREKGSVAVPSGTSPGGVATTAAGSRHSPAGSQ
ALQTTAAEELMSQKKFEEIKKANQAAARKLVEEQFSSSSEEGDEDFEGKQGKILANTFITTYTTQTDGDTR
ELERTKQYVNEAFQAGAMTCLICIASVKRNQAVWSCSGCFIFHMPCIQKWAKDSQFLVSSVTDDDFGKK
DCPWPCPKCRFEYKRSETPSRYYCYCGKVEDPPLDPWL VPHSCGQVCEREFKPPCGHKCLLLCHPGPCPP
CPKMVTTTCYCKKAKPIPRRCSAKEWSQLPCGQKLLCGQHKCENPCHAGSCQPCPRVSRQKCVCGKKVA
ERSCASPLWHCDQVCGKTLPCGNHTCEQVCHVGACGECPRSGKRFPCQKSKFSLPCTEDVPTCGDSCDK
VLECGIHRCSQRCHRGPCETCRQEVEKHCRGKHTKRMPCPKPYLCETKCVKMRDCQKHQCRKCCPGNC
PPCDQNCGRTLGCRNHKCPVCHRGSCYPCPETVDVKCNCNGNTKVTVPCGRERTTRPPKCKEQCSRPTC
HHTSQEKHRCHF GSCPPCHQPCQKVLKCGHLCPAPCHDQALIKQTRHQPTGPWEQPSAPFIQTALPC
PPCQVP IPMECLGKHEVSPLPCHAVGPYSCKRVCGRILDCQNHTCMKECHKVTKTDGCTGKNKAGPECLH
CEEGCSKSRPLGCLHPCILRCHPGCEPPCVQMLRIKCHCKITSLYVECRKITTADVNEKNLLSCCKNQCP
KELPCGHRCKEMCHPGCEPFNCNQKVKLRCPCKRIKKEKQCNKVRENQVSI ECDTTCKEMKRKASEIKEA
EAKAALEEEKRRQAELEAFENRLKGRKKNRKRDEVAVELSLWQKHXYLISVCGVVVVVFAWYITHDYN
```

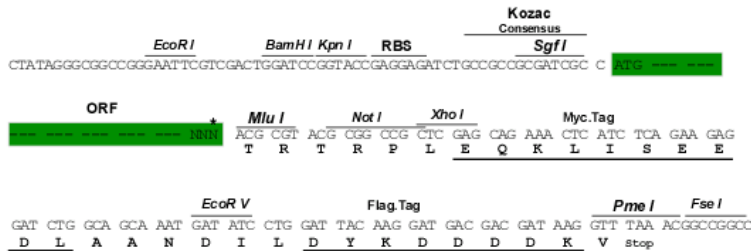
TRTRPLEQKLISEEDLAANDILDYKDDDDKV

Chromatograms: https://cdn.origene.com/chromatograms/mk8012_f04.zip

Restriction Sites: SgfI-MluI

Cloning Scheme:

Cloning sites used for ORF Shuttling:

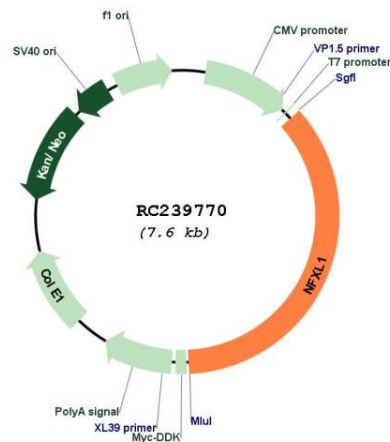


* The last codon before the Stop codon of the ORF

ACCN: NM_001278624

ORF Size: 2733 bp

OTI Disclaimer:	The molecular sequence of this clone aligns with the gene accession number as a point of reference only. However, individual transcript sequences of the same gene can differ through naturally occurring variations (e.g. polymorphisms), each with its own valid existence. This clone is substantially in agreement with the reference, but a complete review of all prevailing variants is recommended prior to use. More info
OTI Annotation:	This clone was engineered to express the complete ORF with an expression tag. Expression varies depending on the nature of the gene.
Components:	The ORF clone is ion-exchange column purified and shipped in a 2D barcoded Matrix tube containing 10ug of transfection-ready, dried plasmid DNA (reconstitute with 100 ul of water).
Reconstitution Method:	<ol style="list-style-type: none"> 1. Centrifuge at 5,000xg for 5min. 2. Carefully open the tube and add 100ul of sterile water to dissolve the DNA. 3. Close the tube and incubate for 10 minutes at room temperature. 4. Briefly vortex the tube and then do a quick spin (less than 5000xg) to concentrate the liquid at the bottom. 5. Store the suspended plasmid at -20°C. The DNA is stable for at least one year from date of shipping when stored at -20°C.
RefSeq:	NM_001278624.2
RefSeq Size:	3861 bp
RefSeq ORF:	2736 bp
Locus ID:	152518
UniProt ID:	Q6ZNB6
Cytogenetics:	4p12
Protein Families:	Transcription Factors, Transmembrane
MW:	101.3 kDa

Product images:


Circular map for RC239770