

## Product datasheet for **RC239769**

### **NFXL1 (NM\_001278623) Human Tagged ORF Clone**

#### **Product data:**

Product Type:	Expression Plasmids
Product Name:	NFXL1 (NM_001278623) Human Tagged ORF Clone
Tag:	Myc-DDK
Symbol:	NFXL1
Synonyms:	CDZFP; HOZFP; OZFP; URCC5
Mammalian Cell Selection:	Neomycin
Vector:	pCMV6-Entry (PS100001)
E. coli Selection:	Kanamycin (25 ug/mL)



[View online »](#)

**ORF Nucleotide  
Sequence:**

>RC239769 representing NM\_001278623  
 Red=Cloning site Blue=ORF Green=Tags(s)

TTTTGTAATACGACTCACTATAGGGCGGCCGGGAATTCGTCGACTGGATCCGGTACCGAGGAGATCTGCC  
 GCC**CGGATCGCC**

ATGGAAGCTTCCTGGCGCCAGGTGGCCGGTGGCCGAGGCCGATCCCGGGACGGGCCACTGCCGCCCCCT  
 CAGGAAATGGAGTCCATCTCCGCGCGCCGGAGGAGGGCCGAGAGAAGGGTTCGGTGGCGCAGTTCCCTC  
 TGGCACCAGTCCCGGAGGAGTCCGACACGGCGCTGCAGGGAGCAGGCACAGCCCGCAGGATCCCAA  
 GCCCTGCAGACTACCGCAGCCAGCGAGCTAATGTCTCAGAAAAATTTGAAGAAATCAAGAAAGCTAAC  
 AAGCTGCAGCCAGAAAATTGTTGAAGAACAGTTAGCTCTTATCTGAAGAAGGAGATGAAGATTTTGA  
 AGGAAAACAGGAAAAATACTTGCAAATACGTTTATAACATACACTACTCAGACAGATGGAGATACACGT  
 GAATTAGAGCGAACAACAATATGTAATGAAGCTTTTCAAGCAGGGGCTATGACATGCCTAATTTGTA  
 TTGCTTCGGTGAAGAGAAACCAAGCAGTTTGGAGCTGTCGGGATGTTTCTGTATATTTACATGCCCTG  
 TATCCAGAAGTGGGCTAAAGACAGCCAGTTTCTGTATCTTCTGTGACTGATGATGATTTTGGAAAGAA  
 GATTGTCCCTGGCCTTGCCAAAATGTAGTTTGAATACAAACGATCTGAAACACCTAGTAGGTACTATT  
 GCTATTGTGAAAAGTAGAAGATCCACCTTAGATCCGTGGCTTGTGCCTCATTGATGTCGCAAGTATG  
 TGAGCGTGAATTTAAACCTCCTTGTGGCCATAAATGTTTACTCCTCTGTCATCCAGTCCCTGCCCTCCT  
 TGTCCAAAGATGGTCACAACACTTGTACTGTAAAGAAAGCAAAACCTATCCCTCGTAGGTGCAGTGCCA  
 AGGAATGGTCTTGTGACGTGCCATGTGGACAGAAGTTGCTTTGTGGGCAACATAAGTGTGAAAATCCTTG  
 TCATGCAGGAAGTGTGACGCTTGTCCAAGAGTTAGTAGACAAAAGTGTGTCTGTGGCAAAAAGTAGCT  
 GAAAGAAGTTGTCAAGTCCACTATGGCACTGTGATCAAGTATGTGAAAAAACTGCCATGTGGTAATC  
 ACACATGTGAGCAAGTTGCCATGTTGGTGTCTTGTGGAGAATGTCTCGATCTGGGAAAAGTTCTGTCC  
 ATGTCAGAAATCAAAGTTTTCTTTGCCTGTACAGAAGATGTACCAACTTGTGGAGACAGTTGTGACAAA  
 GTACTTGAATGCGGAATCCATAGATGTTTACAGCGTTGTCACCGAGTCCCTGTGAAACATGTAGACAAG  
 AAGTGGAAAAGCATTGTCGCTGTGGAAAGCATACAAAACGAATGCCTTGTGATAAACCTTATCTGTGTGA  
 AACTAAGTGTGTTAAGATGCGTACTGTGAGAAGCATCAATGTAGAAGAAAGTGTGCCCTGGAAACTGT  
 CCACCTTGTGATCAAACTGTGGACGGACTTTAGGATGTAGAACCATAAGTGTCCATCTGTCTGCACA  
 GAGGCAGTTGCTATCCCTGCCAGAAACCGTAGATGTGAAGTGTAAATGTGGCAATACAAAGGTGACAGT  
 GCCCTGTGGCCGAGAACGTACCACAAGACCACCAAGTGAAGGAGCAATGCAGTCGACCACCAACTTGT  
 CATCATACAAGTCAAGAAAAACATCGCTGTCACTTTGGTCTTGTCCACCATGTCACTCACTTGCACAA  
 AAGTTTTGGAGAAATGTGGTCACTTGTGTCCTGCTCCGTGTCATGATCAAGCATTATAAAGCAGACTGG  
 CAGGCACCAGCCTACAGGCCCTTGGGAACGCCTTCTGAGCCAGCATTTATTCAGACTGCATTACCGTGT  
 CCTCCATGTCAAGTTCCTATTCCATGGAATGTCTTGGGAAACATGAGGTGAGTCCACTACCATGCCATG  
 CTGTAGGACCCTACTCTTGTAAAAGAGTTTGTGGAAAGATCTTGGATTGTGAGAAATCACACATGTATGAA  
 AGAATGCCACAAAGTAAACAAAAGTGTGGTGCAGTGGAAAAAACAAGGCTGGCCGAGAAATGCCTTCAT  
 TGTGAGGAAGGGTGTCCAAGTACGGCCACTAGGTTGTCTTACCCATGATTTTGCAGTGTACCCTG  
 GAGAATGTCCACCTTGTGTTTCAAGTGTGCTTAAATGAAAAGTCACTGTAAAGTCAACAAGCCTGTATG  
 ATGTAGAAAAATAACACAGCTGATGTAATGAAAAGAACCTCCTCAGTTGTTGCAAAAATCAGTGCCCT  
 AAAGAGCTTCTTGTGGTCATAGATGCAAGAGATGTGTATCCTGGTGAATGTCCCTTTAACTGCAACC  
 AGAAGGTAAAAGTGTGCTTGTAAAAAGAAATAAAAAGGAATTGCAGTGAACAAGTACGTGAAAA  
 TCAGGTTTCAATAGAATGTGACACAACGTGCAAGGAAATGAAGCGGAAAGCATCTGAGATAAAGAGCA  
 GAAGCCAAAGCTGCTCTTGAAGAAGAAAAACGAAGACAACAGGCTGAACTAGAAGCTTTTGAACAGAC  
 TGAAGGGTCGTCGGAAGAAGAACAGGAAAAGAGATGAAGTGGCAGTTGAGCTATCACTATGGCAAAAACA  
 TAAATATTATCTATTTCAGTGTGTGGAGTTGTGGTTGTAGTGTTCCTGGTACATACCCCATGATGTC  
 AAT

**ACGCGT**ACGCGGCCGCTCGAGCAGAAACTCATCTCAGAAGAGGATCTGGCAGCAAATGATATCCTGGATT  
 ACAAGGATGACGACGATAAAGTTTAA

**Protein Sequence:** >RC239769 representing NM\_001278623  
Red=Cloning site Green=Tags(s)

```
MEASWRQVAGGRGRSRGRATAAPSGNGVHLRGAGGGREKGSVAVPSGTSPGGVATTAAGSRHSPAGSQ
ALQTTAAEELMSQKKFEEIKKANQAAARKLVEEQFSSSSEEGDEDFEGKQGKILANTFITTYTTQTDGDTR
ELERTKQYVNEAFQAGAMTCLICIASVKRNQAVWSCSGCFIFHMPCIQKWAKDSQFLVSSVTDDDFGKK
DCPWPCPKCRFEYKRSETPSRYYCYCGKVEDPPLDPWL VPHSCGQVCEREFKPPCGHKCLLLCHPGPCPP
CPKMVTTTCYCKKAKPIPRRCSAKEWSQLPCGQKLLCGQHKCENPCHAGSCQPCPRVSRQKCVCGKKVA
ERSCASPLWHCDQVCGKTLPCGNHTCEQVCHVGACGECPRSGKRFPCQKSKFSLPCTEDVPTCGDSCDK
VLECGIHRCSQRCHRGPCETCRQEVEKHCRGKHTKRMPCHPYL CETKCVKMRDCQKHQCRKCCPGNC
PPCDQNCGRTLGCRNHKCPVCHRGSCYPCPETVDVKCNCGNTKVTVPGRERTTRPPKCKEQCSRPTC
HHTSQEKHRCHF GSCPPCHQPCQK VLEKCGHLCPAPCHDQALIKQTRHQPTGPWEQPSEPAFIQTALPC
PPCQVP IPMECLGKHEVSPLPCHAVGPYSCKRVCGRILDCQNHTCMKECHKVTKTDGCTGKNKAGPECLH
CEEGCSKSRPLGCLHPCILRCHPGCEPPCVQMLRIKCHCKITSLYVECRKITTADVNEKNLLSCCKNQCP
KELPCGHRCKEMCHPGCEPFNCNQKVKLRCPCKRIKKEKELQCNKVRENQVSI ECDTTCKEMKRKASEIKEA
EAKAALEEEKRRQAELEAFENRLKGRKKNRKRDEVAVELSLWQKHXYLISVCGVVVVVFAWYITHDYN
```

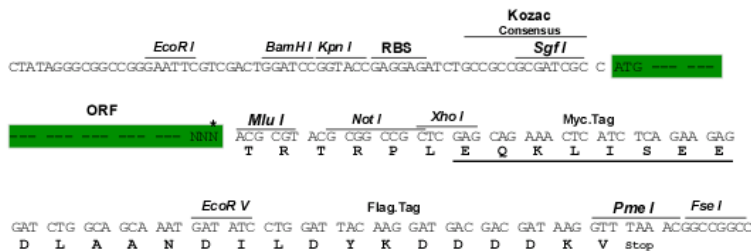
TRTRPLEQKLISEEDLAANDILDYKDDDDKV

**Chromatograms:** [https://cdn.origene.com/chromatograms/mk8012\\_f04.zip](https://cdn.origene.com/chromatograms/mk8012_f04.zip)

**Restriction Sites:** SgfI-MluI

**Cloning Scheme:**

Cloning sites used for ORF Shuttling:

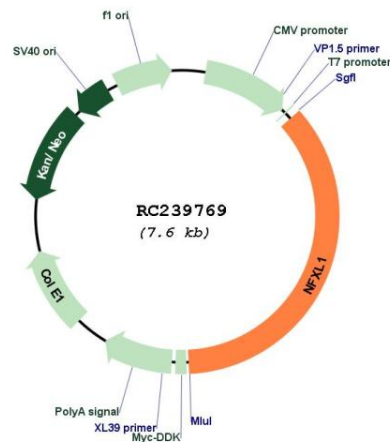


\* The last codon before the Stop codon of the ORF

**ACCN:** NM\_001278623

**ORF Size:** 2733 bp

<b>OTI Disclaimer:</b>	The molecular sequence of this clone aligns with the gene accession number as a point of reference only. However, individual transcript sequences of the same gene can differ through naturally occurring variations (e.g. polymorphisms), each with its own valid existence. This clone is substantially in agreement with the reference, but a complete review of all prevailing variants is recommended prior to use. <a href="#">More info</a>
<b>OTI Annotation:</b>	This clone was engineered to express the complete ORF with an expression tag. Expression varies depending on the nature of the gene.
<b>Components:</b>	The ORF clone is ion-exchange column purified and shipped in a 2D barcoded Matrix tube containing 10ug of transfection-ready, dried plasmid DNA (reconstitute with 100 ul of water).
<b>Reconstitution Method:</b>	<ol style="list-style-type: none"> <li>1. Centrifuge at 5,000xg for 5min.</li> <li>2. Carefully open the tube and add 100ul of sterile water to dissolve the DNA.</li> <li>3. Close the tube and incubate for 10 minutes at room temperature.</li> <li>4. Briefly vortex the tube and then do a quick spin (less than 5000xg) to concentrate the liquid at the bottom.</li> <li>5. Store the suspended plasmid at -20°C. The DNA is stable for at least one year from date of shipping when stored at -20°C.</li> </ol>
<b>RefSeq:</b>	<u>NM_001278623.1, NP_001265552.1</u>
<b>RefSeq Size:</b>	3723 bp
<b>RefSeq ORF:</b>	2736 bp
<b>Locus ID:</b>	152518
<b>UniProt ID:</b>	<u>Q6ZNB6</u>
<b>Cytogenetics:</b>	4p12
<b>Protein Families:</b>	Transcription Factors, Transmembrane
<b>MW:</b>	101.3 kDa

**Product images:**


Circular map for RC239769