

## Product datasheet for **RC239702**

### ZMIZ2 (NM\_001300959) Human Tagged ORF Clone

#### Product data:

Product Type:	Expression Plasmids
Product Name:	ZMIZ2 (NM_001300959) Human Tagged ORF Clone
Tag:	Myc-DDK
Symbol:	ZMIZ2
Synonyms:	hZIMP7; NET27; TRAFIP20; ZIMP7
Vector:	pCMV6-Entry (PS100001)
E. coli Selection:	Kanamycin (25 ug/mL)
Cell Selection:	Neomycin



[View online »](#)

**ORF Nucleotide Sequence:**

>RC239702 representing NM\_001300959  
 Red=Cloning site Blue=ORF Green=Tags(s)

TTTTGTAATACGACTCACTATAGGGCGGCCGGGAATTCGTCGACTGGATCCGGTACCGAGGAGATCTGCC  
 GCC**CGGATCGCC**

ATGAACCTCATGAACCCCATGAAACCTGCCTGCCCCCTGCGCCACACGGTGATGGTTTCATTCGCATATG  
 AGTCTGTGCCTTGGCAACAAAGCGCCACTCAGCCGGCTGGATCGCTGTCTGTGGTCACTACTGTGTGGG  
 AGTTGGCAACCGACACAGAGCCAGTGCCTGGGACAGCAGGCGTTTGTGAAGGCGGCCCAACAAGGGC  
 TACGTGCAGCAAGGCGTGTACAGCCGCGGGGGCTACCCTGGGGCCCCGGCTTACCACCGGGTATGCAG  
 GCGGCCCGGGGGCTGGGCTCCCTCACATGCTGCAAGACCCTCCACTGACTTCACGCAAGCGGCAGC  
 TGCTGCAGCTGTGGTGTGCGGCAGCCACTGCCACCGCCACAGCCACAGCCACCGTGGCTGCTCTCCAG  
 GAGAAGCAGAGCCAGGAGCTGAGCCAGTATGGAGCGATGGGGGCCGACAGTCTTTAACAGCCAGTTTC  
 TGCAGCATGGAGTCCCCGGGGCTAGTGTCCCCGCTGGCATGAACCCTACTGGCATAGGAGGGTAAT  
 GGGCCCCCTGTGGCTCTCCCCCTGGCTATGAACCCACCGGGCAGCAGGAATGACACCCTTGTATGCA  
 GGGCAGCGTGTGCCCAACATGGGTATCCTGGGCTCCCCAGGCCAGCCACTGCCCCGACAGGGGGTCA  
 AGAGAACCTACTCTGAGGTGTATCCAGGGCAGCAGTATCTGCAAGGAGGGCAGTATGCACCCAGCACCGC  
 CCAGTTTGCGCCAGCCCTGGGAGCCCCCTGCCCCCTCCCTTCTACCTGGGCACAGGCTGCCCTG  
 CAGCAGGGCATGACCCAGTCCCTGTCCGTGCTGGCCCCACGGGACTGCATTATAAGCCTACCCGTTCCA  
 TCCCGGGTATCCAGTTCCTCCACTGCCAGGGAACCCACGCCACCCATGACCCCAAGCAGCAGCGTCCC  
 TTACATGTCACCAACCAAGAGGTCAAGTCTCCCTTCTGCTGATCTCAAGCCCAACCTCAACTCCTTG  
 CACTCATCGCCCTCTGGAAGCGGGCTTGTGACGAGTTGCGGCTGACCTCCCTGTGCGCATGGGGTGG  
 TCCTGGAGCCCTCCGCCTGCAGCACAACCTGGCTGTAAGCAACCATGTCTTCCAGTCCGAGAGCAGT  
 CTACAAGACCCTGATAATGAGGCCTGACCTGGAGCTGCAATTCAAGTGCTACCACCACGAGGACCGGCAG  
 ATGAACACCAACTGGCCAGCCTCGGTGCAGTCAAGTCAATGCCACGCCGCTCACCATCGAGCGTGGCG  
 ACAACAAGACCTCGCACAAAGCCACTCTACTGAAGCATGTGTGCCAGCCAGGCCGCAACACCATCCAGAT  
 CACCGTACCCGCTGCTGCTGCTCCACCTCTTCGTGCTGCAGCTAGTGCACCGCCATCCGTCGCTCG  
 GTGCTGCAGGGCCTCCTCAAAAAGCGCCTCCTGCCTGCTGAGCACTGCATCACCAGATAAAGCGGAACT  
 TCAGCAGCGGCACCATCCCTGGCACCCTGGGCCAACGGAGAGGACGGGGTGGAGCAGACAGCTATCAA  
 GGTGTCCCTGAAGTGCCCATCACCTCCGAGGATCCAGCTCCCTGCCGAGGTCATGACTGTCGCCAC  
 ATACAGTCTTTGACCTGGAGTGTACCTGCAGCTCAACTGTGAGCGGGGACTTGGAGGTCTCCTGTGT  
 GCAACAAGACAGCTTTGCTGGAGGGCCTGGAGGTGGACCAGTACATGCTGGGCATCCTGATTTACATTCA  
 GAACTCTGACTATGAGGAGATCACCATCGACCCACGTGCAGCTGGAAGCCAGTGCCCGTGAAGCCTGAC  
 ATGCACATCAAGGAGGAGCCGGATGGGCCAGCACTGAAGCGCTGCCGACCCGTGAGCCCCGCCACGTGC  
 TCATGCCAGCGTGATGGAGATGATCGCCGCCCTGGGCCCGGGCCTGCCCCCTTTGCCCCCTGCAGCC  
 CCCCTCAGTCCCTGCCCCAGCGACTACCCTGGCAGGGTTCCAGCTTCTGGGGCTGGAACCTTCCCT  
 GAGTCTTCCCACCCACCAGCCAGCACCACCCCTTGGTGTGAGTTACCCCGGGACCACCCCCATCT  
 CCTACCAGTCTGACATTTCCAGCAGCCTCCTGACTTCAGAGAAGTCTACCGCTGCCTCCAAGCCAGAT  
 GGCACCAGCAGGTACCTGGACCCCACTACAATCCTGGGACACCAGGACTACACACCTCCAACCTTGGG  
 GCCCTCCAGGTCCCAGCTGCACCAATCAAAACCTCCCCAGCGTCCCGCAGTCCCTGGGCCAAGCGA  
 GCTTAGGACCTACGGGTGAAGTGGCCTTCACTGCTGCCACAGGCGTGATGGGGCCCCCAGCATGTCTGG  
 AGCCGGGGAGGCCCCAGAACCAGCTCTGGACCTGCTCCCGAACTGACCAACCCTGATGAGCTACTGTCC  
 TACTTGGGCCACCCGACCTCCCTACGAACAACAATGACGACCTGCTTTCTGTTTGAGAAACAAC

**ACGCGT**ACGCGGCCGCTCGAGCAGAACTCATCTCAGAAGAGGATCTGGCAGCAATGATATCCTGGATT  
 ACAAGGATGACGACGATAAGGTTTAA

**Protein Sequence:** >RC239702 representing NM\_001300959  
Red=Cloning site Green=Tags(s)

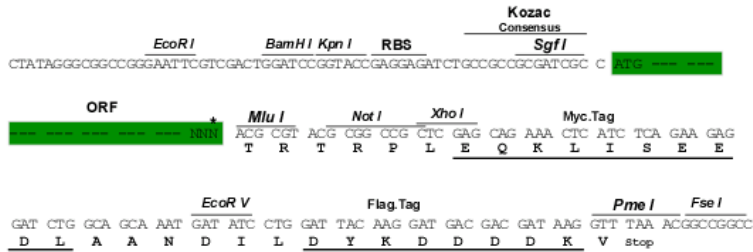
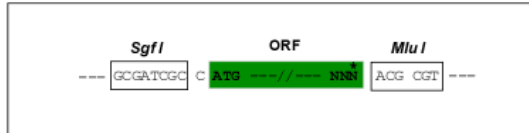
MNSMNPMPALPPAPHGDGSFAYESVPWQQSATQPAGSLSVVTTVWGVGNATQSQCLGQQAFAEGGANKG  
YVQQGVYSRGGYPGAPGFTTGYAGGPGGLGLPSHAARPSDFTQAAAAAATAATATATVAALQ  
EKQSQELSOYGAMGAGQSFNSQFLQHGGPRGSPVPAGMNPTGIGGVMGSPGLSPLAMNPTRAAGMTPLYA  
GQRLPQHGYPGPPQAQPLPRQGVKRTYSEVYPGQQYLQGGQYAPSTAQFAPSPGQPPAPSPSYPGHRLPL  
QQGMTQSLSVPGPTGLHYKPTRSIPGYPSSPLPGNPTPPMTPSSSVPYMSPNQEVKSPFLPDLKPNLNSL  
HSSPSGSGPCDELRLTFPVRDGVVLEPFRLQHNLAVSNHVFQLRDSVYKTLIMRPDLELQFKCYHHEDRQ  
MNTNWPASVQVSVNATPLTIERGDNKTSBKPLYLKHCQPGRNTIQITVTACCCSHLFVLQLVHRPSVRS  
VLQGLLKKRLLPAEHCITKIKRNFSSGTIPGTPGPNGEDGVEQTAIKVSLKCPITFRRIQLPARGHDCRH  
IQCFDLESYLQLNCERGTWRCPCNKKTALLEGLEVDQYMLGILIIYIQNSDYEEITIDPTCSWKPVVVKPD  
MHIKEEPDGPALKRCRTVSPAHLMPVSMEMIAALGPGAAPFAPLQPPSVAPSDYPGQSSFLGPGTFP  
ESFPPTTPSTPTLAEFTPGPPPISYQSDIPSSLLTSEKSTACLPSQMAPAGHLDPTHNPGTPLHTSNLG  
APPGPQLHHSNPPASRQSLGQASLGPTGELAFSPATGVMGPPSMGAGEAPEPALDLLPELTNPDELLS  
YLGPPDLPTNNDDLLSLFENN

TRTRPLEQKLI SEEDLAANDILDYKDDDDKV

**Restriction Sites:** Sgfl-Mlul

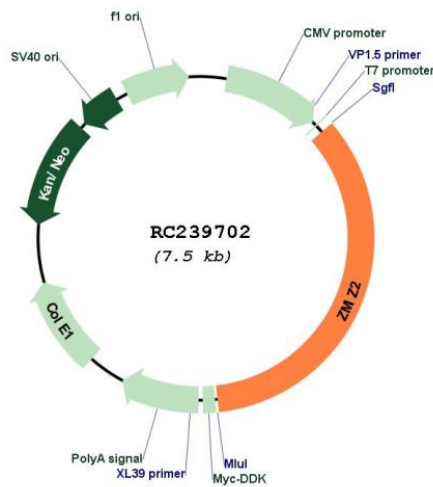
Cloning Scheme:

Cloning sites used for ORF Shuttling:



\* The last codon before the Stop codon of the ORF

Plasmid Map:



<b>ACCN:</b>	NM_001300959
<b>ORF Size:</b>	2586 bp
<b>OTI Disclaimer:</b>	The molecular sequence of this clone aligns with the gene accession number as a point of reference only. However, individual transcript sequences of the same gene can differ through naturally occurring variations (e.g. polymorphisms), each with its own valid existence. This clone is substantially in agreement with the reference, but a complete review of all prevailing variants is recommended prior to use. <a href="#">More info</a>
<b>OTI Annotation:</b>	This clone was engineered to express the complete ORF with an expression tag. Expression varies depending on the nature of the gene.
<b>Components:</b>	The ORF clone is ion-exchange column purified and shipped in a 2D barcoded Matrix tube containing 10ug of transfection-ready, dried plasmid DNA (reconstitute with 100 ul of water).
<b>Reconstitution Method:</b>	<ol style="list-style-type: none"><li>1. Centrifuge at 5,000xg for 5min.</li><li>2. Carefully open the tube and add 100ul of sterile water to dissolve the DNA.</li><li>3. Close the tube and incubate for 10 minutes at room temperature.</li><li>4. Briefly vortex the tube and then do a quick spin (less than 5000xg) to concentrate the liquid at the bottom.</li><li>5. Store the suspended plasmid at -20°C. The DNA is stable for at least one year from date of shipping when stored at -20°C.</li></ol>
<b>RefSeq:</b>	<a href="#">NM_001300959.1</a> , <a href="#">NP_001287888.1</a>
<b>RefSeq Size:</b>	4983 bp
<b>RefSeq ORF:</b>	2589 bp
<b>Locus ID:</b>	83637
<b>UniProt ID:</b>	<a href="#">Q8NF64</a>
<b>Cytogenetics:</b>	7p13
<b>MW:</b>	91.6 kDa
<b>Gene Summary:</b>	ZMIZ2 and ZMIZ1 (MIM 607159) are members of a PIAS (see MIM 603566)-like family of proteins that interact with nuclear hormone receptors. ZMIZ2 interacts with androgen receptor (AR; MIM 313700) and enhances AR-mediated transcription (Huang et al., 2005 [PubMed 16051670]).[supplied by OMIM, May 2010]