

## Product datasheet for **RC239701**

### **BRD8 (NM\_001300961) Human Tagged ORF Clone**

#### **Product data:**

Product Type:	Expression Plasmids
Product Name:	BRD8 (NM_001300961) Human Tagged ORF Clone
Tag:	Myc-DDK
Symbol:	BRD8
Synonyms:	p120; SMAP; SMAP2
Vector:	pCMV6-Entry (PS100001)
E. coli Selection:	Kanamycin (25 ug/mL)
Cell Selection:	Neomycin



[View online »](#)

**ORF Nucleotide Sequence:**

>RC239701 representing NM\_001300961  
 Red=Cloning site Blue=ORF Green=Tags(s)

TTTTGTAATACGACTCACTATAGGGCGGCCGGAATTCGTCGACTGGATCCGGTACCGAGGAGATCTGCC  
 GCC**CGCATCGCC**

ATGGTCCATCCGAGAGAAGCTATGTTTAGCATCTTCTGTGATGAGAAGTGGCGATCAAAATTGGTAAAGG  
 TATCAGTTAGCAGAGCAATCAAGCCCTTTCAGAACCTGGCCGCCCTCCAGACTGGTTCTCTCAAAAACA  
 TTGTGCTTCCAGTACTCGGAGCTTTTAGAGACCACTGAGACACCAAAACGGAACGAGGTGAAAAGGGA  
 GAAGTGGTGGAACTGTTGAAGATGTTATTGTTTCGAAATTGACTGCTGAGCGAGTTGAAGAATAAAGA  
 AAGTGATAAAGGAAACCCAGGAGAGATATAGACGGCTAAAGAGAGATGCAGAATAATTCAAGCTGGACA  
 CATGGACAGCAGACTGGATGAGCTTTGCAATGACATTGCAACGAAAAAGAAATTGGAAGAAGAGGAGGCT  
 GAAGTAAAGAGGAAGGCTACAGATGCTGCATACCAGGCTCGTCAAGCAGTAAAAACACCCCCCGAGGT  
 TACCCACTGTGATGGTTCGCTCTCTATAGATTCTGCCTCCCAGGAGGTGATTACCACTTGGGGACTT  
 GACTCCAACCACTATGGAAGAGGCTACCTCTGGGGTCAATGAGAGTGAAATGGCTGTGGCTTCTGGCCAC  
 CTGAACAGTACAGGTGTCTCTGGAGGTAGGCGGGTCTTCCCATGATACATGGTGGGAGATACAGC  
 AAACACCAATACTGTTGCAGCCTCCCCTGCTGCATCAGGTGCTCCCACTCTTCCCAGGCTTTAGAAAGC  
 TGGTCTACACAGTTCACCACACCTCTTCTTCACTACTGTTGCCAGTGAGCTCCAGTAAACTT  
 GTGCCACCCCTGTAGAGTCTGTGTCCCAAGCTACCATTGTGATGATGCCTGCGTGCCAGCACCATCT  
 CTGCTCCGGCTGTCTCCACTACTGAAAGTGTAGCTCCAGTGAGTCAACCCGACAAGTGTGTTCCCATGGA  
 GGCTGTGGGGATCCACATACTGTGACTGTTCCATGGACAGCAGTGAATATCCATGATCATCAATTCT  
 ATCAAAGAAGAGTGTTCGATCAGGGGTAGCAGAGGCTCCTGTTGGATCAAAGGCTCCAGCATAGATG  
 TGAGACTGTTGGAGACATCATTGCCATCATTGAGGACAAGGTAGATGATCATCCTGAAGTCTGGATGTG  
 GCAGCAGTGAAGCAGCACTGTCAATTTGTGAAGAAAATGATGATCCTCAGTCCCTGCCTGGCCCTGGG  
 AGCATCTATCCAGCAGGAGCGGACAAGCCAGTACCTCTCCCTGCACCAGAAATGACGGTCAAGCAAGA  
 GAGACTGGACTTTGAGGAAACGGAACAAGGGAATACATGAACTGGTGGACATCAGGGAGCCAGTGCA  
 GAGATCAAGGTGGAACCTGCAGAACCAGAGCCAGTCAATTCAGGAGCCGAAATAGTAGCTGGAGTTGTC  
 CAGCCACAAGTATGGAGCCACCAGAACTCAGGAGTCAGGACTTAGATGAGGAACTGGGAAGTACTGCAGC  
 TGGAGAGATTGTTGAAGCAGATGTTGCCATTGGGAAAGGCGATGAGACTCCACTACAAAATGTAAGACA  
 GAGGCATCCCCTGAAAGCATGTTGTCTCCATCACATGGCTCAAAATCCCATTGAAGATCCTTAGAGGCAG  
 AGACTCAGCACAAGTTTGAATGTGAGACTCATTGAAAGAAGAATCAGGGACTATTTTGGAAAGCCAGAT  
 AAAGGATGCCCCAGGTGAGGATGAGGAGGAAGATGGTGTGAGTGAAGCGCCAGCCTAGAGGAGCCTAAG  
 GAAGAGGATCAAGGAGAAGGCTACTTGTGAGAAATGGATAATGAACCTCCTGTGAGCGAGAGTGATGATG  
 GCTTCAGCATACACAATGCTACACTGCAGTCACACACACTGGCAGACTCCATCCCAGCAGCCCTGCTTC  
 TTCACAGTTCTGTCTGTAGTGAGGATCAGGAAGCTATTCAGGCACAGAAAATTTGGAAGAAAGCCATC  
 ATGCTTGTATGGAGAGCTGCAGTAATCATAGGTATGCCAATGTCTTCTGCAGCCTGTTACAGATGACA  
 TAGCACCTGGCTACCACAGCATTGTGCAGAGCCATGGATTTGTCAACTATTAAGAAAAACATAGAAAA  
 TGGACTGATCCGAAGCACAGCTGAATTTAGCGTGACATTATGCTGATGTTTCAGAATGCTGTAATGTAC  
 AATAGCTCAGACCATGATGTCTATCACATGGCAGTGGAGATGCAGCGAGATGCTTGGAAACAGATCCAGC  
 AATTTCTGGCCACGCAGTTGATTATGCAAAACATCCGAGTCTGGGATCAGTGCTAAAAGTCTTCGAGGGAG  
 AGATTCTACCCGCAAACAGGATGCTTCAGAGAAGGACAGTGTCCCAATGGGCTCTCCTGCCTTCTTCTC  
 TCTCTTTGATGGAGGAACCAGGGGACCGCTGTGCCATTGAAGCAGATATGAAGATGAAAAAG

**ACCGGT**ACGGCGCCGCTCGAGCAGAACTCATCTCAGAAGAGGATCTGGCAGCAATGATATCCTGGATT  
 ACAAGGATGACGACGATAAGGTTTAA

**Protein Sequence:** >RC239701 representing NM\_001300961  
Red=Cloning site Green=Tags(s)

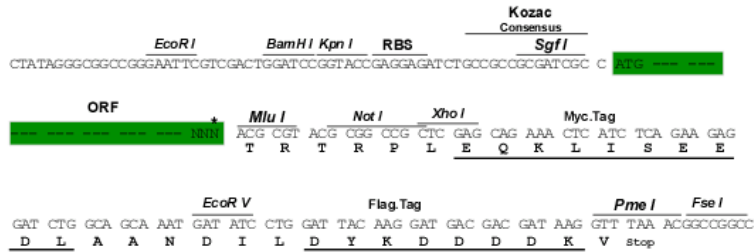
MVHPREAMFSIFCHEKWRSLVVRVSVSRAIKPFAEPGRPPDWFSSQKHCASQYSELLETETPKRKRGEKG  
EVVETVEDVIVRKLTAERVEELKKVIKETQERYRRLKRDAELIQAGHMDSRLDELCDIATKKKLEEEEA  
EVKRKATDAAYQARQAVKTPRRLPTVMVRSPIDSASPGGDYPLGDLTPTTMEEATSGVNESEMAVASGH  
LNSTGVLLLEVGGVLPMIHGGEIQQTPNTVAASPAASGAPTLRLLLEAGPTQFTTPLASFVVASEPPVKL  
VPPPVESVSQATIVMMPALPAPSSAPAVSTTESVAPVSQPDNCVPM EAVGDPHTVTVSMDSEISMIINS  
IKEECFRSGVAEAPVGSKAPSIDGKEELDLAEKMDIAVSYTGEELDFETVGDIIAIIEDKVDDHPEVLDV  
AAVEAALSFCEENDDPQSLPGPWEHPIQQERDKPVPLPAPEMTVKQERLDFEETENKGIHELVDIREPSA  
EIKVEPAEPEPVISGAEIVAGVVPATSMPEPPELRSQDLDEELGSTAAGEIVEADVAIGKGDETPLTNVKT  
EASPESMLSPSHGSNPIEDPLEAETQHKFEMSDSLKEESGTIFGSQIKDAPGEDEEEDGVSEASLEPK  
EEDQEGEYLSEMDNEPPVSEDDGFSIHNATLQSHTLADSIPSSPASSQFVCSQEDQEAIIQAQKIWKKAI  
MLVWRAAANHRYANVFLQPVTDIAPGYHSIVQRPMDLSTIKKNIENGLIRSTAEFQRDIMLFQNAVMY  
NSSDHDVYHMAVEMQRDVLQIQQLATQLIMQTSSESGISAKSLRGRDSTRKQDASEKDSVPMGSPAFLL  
SLFDGGTRGRRCATIEADMKMKK

TRTRPLEQKLISEEDLAANDILDYKDDDDKV

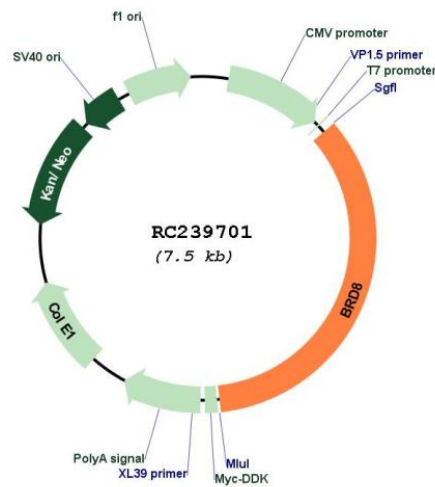
**Restriction Sites:** Sgfl-MluI

**Cloning Scheme:**

Cloning sites used for ORF Shutting:



\* The last codon before the Stop codon of the ORF

**Plasmid Map:**


<b>ACCN:</b>	NM_001300961
<b>ORF Size:</b>	2586 bp
<b>OTI Disclaimer:</b>	The molecular sequence of this clone aligns with the gene accession number as a point of reference only. However, individual transcript sequences of the same gene can differ through naturally occurring variations (e.g. polymorphisms), each with its own valid existence. This clone is substantially in agreement with the reference, but a complete review of all prevailing variants is recommended prior to use. <a href="#">More info</a>
<b>OTI Annotation:</b>	This clone was engineered to express the complete ORF with an expression tag. Expression varies depending on the nature of the gene.
<b>Components:</b>	The ORF clone is ion-exchange column purified and shipped in a 2D barcoded Matrix tube containing 10ug of transfection-ready, dried plasmid DNA (reconstitute with 100 ul of water).
<b>Reconstitution Method:</b>	<ol style="list-style-type: none"><li>1. Centrifuge at 5,000xg for 5min.</li><li>2. Carefully open the tube and add 100ul of sterile water to dissolve the DNA.</li><li>3. Close the tube and incubate for 10 minutes at room temperature.</li><li>4. Briefly vortex the tube and then do a quick spin (less than 5000xg) to concentrate the liquid at the bottom.</li><li>5. Store the suspended plasmid at -20°C. The DNA is stable for at least one year from date of shipping when stored at -20°C.</li></ol>
<b>RefSeq:</b>	<a href="#">NM_001300961.2</a>
<b>RefSeq Size:</b>	3039 bp
<b>RefSeq ORF:</b>	2589 bp
<b>Locus ID:</b>	10902
<b>UniProt ID:</b>	<a href="#">Q9H0E9</a>
<b>Cytogenetics:</b>	5q31.2
<b>Protein Families:</b>	Druggable Genome, Transcription Factors
<b>MW:</b>	94.4 kDa
<b>Gene Summary:</b>	The protein encoded by this gene interacts with thyroid hormone receptor in a ligand-dependent manner and enhances thyroid hormone-dependent activation from thyroid response elements. This protein contains a bromodomain and is thought to be a nuclear receptor coactivator. Multiple alternatively spliced transcript variants that encode distinct isoforms have been identified. [provided by RefSeq, Jul 2014]