

Product datasheet for **RC239659**

NELL1 (NM_001288713) Human Tagged ORF Clone

Product data:

Product Type:	Expression Plasmids
Product Name:	NELL1 (NM_001288713) Human Tagged ORF Clone
Tag:	Myc-DDK
Symbol:	NELL1
Synonyms:	IDH3GL; NRP1
Vector:	pCMV6-Entry (PS100001)
E. coli Selection:	Kanamycin (25 ug/mL)
Cell Selection:	Neomycin



[View online »](#)

ORF Nucleotide
Sequence:

>RC239659 representing NM_001288713
Red=Cloning site Blue=ORF Green=Tags(s)

TTTTGTAATACGACTCACTATAGGGCGGCCGGAATTCGTCGACTGGATCCGGTACCGAGGAGATCTGCC
GCC**CGGATCGCC**

ATGCCGATGGATTGATTTAGTTGTGTGTTCTGTGTGTCAGTCCAGGACAGCAGAAGATATGAAGC
CACCCGTGTTATCGCTGATATGGAGAAGTCTGAAGTCTCTGCTCAGCAATCCCTCAGGGAGT
GGTGGGCTTTGGGATGGACCCTGACCTTCAAGTGGATATCGTCACCGAGCTTGACCTTGTGAACACCACC
CTTGGAGTTGCTCAGGTGTCTGGAATGCACAATGCCAGCAAAGCATTATTTCAAGACATAGAAAAGAG
AGATCCATGCAGCTCCTCATGTGAGTGAGAAATTAATTCAGTGTCCGGAAACAAGAGTGAATTCACCAT
TTTGGCCACTGTACAGCAGAAGCCATCCACTTCAGGAGTGATACTGTCCATTGAGAACTGGAGCACAGC
TATTTTGAAGTGGAGAGCAGTGGCCTGAGGGATGAGATTCGGTATCACTACATACACAATGGGAAGCCAA
GGACAGAGGCACTTCTTACCGCATGGCAGATGGACAATGGCACAAGGTTGCACTGTGAGTACGGCCTC
TCATCTCTGCTCCATGTGACTGTAACAGGATTTATGAGCGTGTGATAGACCCTCCAGATACCAACCTT
CCCCCAGGAATCAATTTATGGCTTGGCCAGCGCAACCAAAAGCATGGCTTATTCAAAGGGATCATCCAAG
ATGGGAAGATCATCTTTATGCCGAATGGATATATAACACAGTGTCCAAATCTAAATCACACTTGCCCAAC
CTGCAGTGATTTCTTAAGCCTGGTGAAGGAATAATGGATTTACAAGAGCTTTTGGCCAAGATGACTGCA
AAACTAAATTAATGCAGAGACAAGACTTAGTCAATTGGAAAAGTGTATTGTGAGAAGACTTGTCAAGTGA
GTGGACTGCTCTATCGAGATCAAGACTCTTGGGTAGATGGTGACCATTGCAGGAAGTGCAGTGCAGAAAG
TGGTGGCGTGGAAATGCCGAAGGATGTCTGTCCCTCTCAATTGCTCCCAGACTCCCTCCCAGTGCAC
ATTGCTGGCCAGTGTCTAAGGTCTGCCGACAAAATGTATCTATGGAGGAAAAGTCTTGCAGAAAGGCC
AGCGGATTTTAAACAAGAGCTGTCCGGAATGCCGAGGTGGAGTTTATGAAAAATTACAGAAATGTGTCC
TCCTTTGAACTGCTCAGAAAAGGATCACATTCTCCTGAGAATCAGTGTGCCGTGTCTGTAGAGGTGAT
AACTTTTGTGCAGAAGGACCTAAATGTGGTGAAGAACTCAGAGTGCAAAAAGTGAATACAAAAGCTACTT
GTGAGTGAAGAGTGGTTACATCTCTGTCCAGGGAGACTCTGCCTACTGTGAAGATATTGATGAGTGTGC
AGCTAAGATGCATTACTGTGATGCCAATACTGTGTGTGCAACCTTCTGGGTTATATCGCTGTGACTGT
GTCCCAGGATACATTCGTGTGGATGACTTCTTGTACAGAACACGATGAATGTGGCAGCGGCCAGCACA
ACTGTGATGAGAATGCCATCTGCACCAACTGTCCAGGGACACAGCTGCACCTGCAAAACCGGGCTACGT
GGGAACGGGACCATCTGCAGAGCTTTCTGTGAAGAGGGCTGCAGATACGGTGAACGTGTGTGGCTCCC
AACAAATGTGTCTGTCCATCTGGATTACAGGAAGCCACTGCGAGAAAGATATTGATGAATGTTAGAGG
GAATCATTGAGTGCCACAACCATTCCCCTGCGTTAACCTGCCAGGGTGGTACCCTGTGAGTGCAGAAG
CGGTTTCCATGACGATGGGACCTATCACTGTCCGGGGAGTCTGTATTGACATTGATGAATGTGCCTTA
AGAACTCACACCTGTTGGAACGATTCTGCCTGCATCAACCTGGCAGGGGGCTTTGACTGTCTCTGCCCT
CTGGGCCCTCCTGCTCTGGTGTGCTCCTCATGAAGGGGGGTGAAGCACAATGGCCAGGTGTGGACCTT
GAAAGAAGACAGGTGTTCTGTCTGCTCCTGCAAGGATGGCAAGATATTCTGCCGACGGACAGCTTGTGAT
TGCCAGAATCCAAGTGTGACCTATTCTGTTGCCAGAATGTGACACCAGAGTACAAGTCAATGTTTAG
GGAAGGAGAGGTAGATTGCTGGCCACTCACTTGCCTCAACTTGTGAGTGTGAGTATACAGCTATCTTAGAA
GGGAATGTTGTCCCGCTGTGTGAGTACCCCTGCCTAGCTGATAACATCACCTATGACATCAGAAAAA
CTTGCCTGGACAGCTATGGTGTTCACGGCTTAGTGGCTCAGTGTGGACGATGGCTGGATCTCCCTGCAC
AACCTGTAATGCAAGAATGGAAGAGTCTGTTGTTCTGTGGATTTGAGTGTCTTCAAAAATAAT

ACGGTACGCGGCCGCTCGAGCAGAACTCATCTCAGAAGAGGATCTGGCAGCAATGATATCTGGATT
ACAAGGATGACGACGATAAGGTTTAA

Protein Sequence: >RC239659 representing NM_001288713
Red=Cloning site Green=Tags(s)

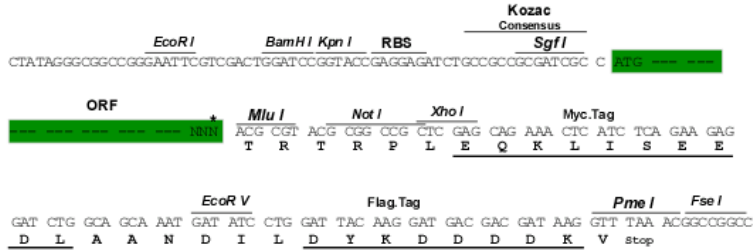
MPMDLILVVWFCVCTARTAEDMKPPVLSLIWRTRVLKSLQSLQGVVGFMDPDLQMDIVTELDLVNTT
LGVAQVSGMHNASKAFLFQDIEREIHAAPHVSEKLIQLFRNKSEFTILATVQKPSTSGVILSIRELEHS
YFELESSGLRDEIRYHYIHNGKPRTEALPYRMADGQWHKVALSVSASHLLLHVDCNRIYERVIDPPDTNL
PPGINLWLGQRNQKHGLFKGIIQDGKIIIFMPNGYITQCPNLNHTCPTCSDFLSLVQGIMDLQELLAKMTA
KLNAYAETRLSQLENCHCEKTCQVSGLLYRDQDSWVDGDHCRNCTCKSGAVECRRMSCPPLNCSPDSLPH
IAGQCCKVCRPKCIYGGKVLAEGRILTKSCRECRGGVLVKITEMCPPLNCSEKDHLPENQCCRVCGRH
NFCAEGPKCGENSECKNWNTKATCECKSGYISVQGDSAYCEDIDECAAKMHYCHANTVCVNLPLGLYRDC
VPGYIRVDDFSCTEHDECGSQHNCDENAICTNTVQGHSTCKPGYVNGTICRAFCEEGCRYGGTCVAP
NKCVCPSGFTGSHCEKDIDECSEGIIECHNHSRCVNLPGWYHCECRSGFHDDGTYSLSGESCIDIDECAL
RTHTCWNSACINLAGGFDCLCPSGSPSCGDCPHEGGLKHNGQVWTLKEDRCSVCCKDGKIFCRRTACD
CQNP SADLFCCECDTRVTSQCLDQNGHKL YRSGDNWTHSCQQCRCLEGEVDCWPLTCPNLSCYEYTAILE
GECCPRCVSDPCLADNITYDIRKTCLDSYGVSRLSGVSWTMAGSPCTTCKCKNGRVCCSVDFECLQNN

TRTRPLEQKLI SEEDLAANDILDYKDDDDKV

Restriction Sites: Sgfl-MluI

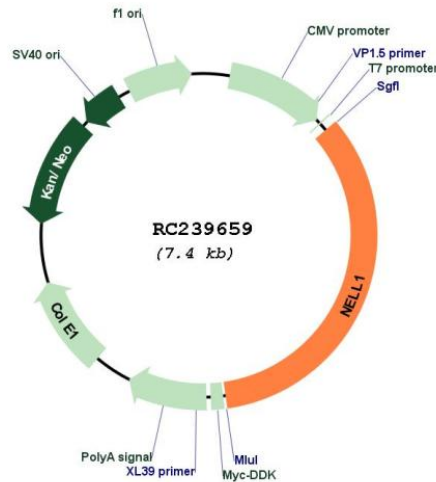
Cloning Scheme:

Cloning sites used for ORF Shuttling:



* The last codon before the Stop codon of the ORF

Plasmid Map:



ACCN: NM_001288713

ORF Size: 2514 bp

OTI Disclaimer: The molecular sequence of this clone aligns with the gene accession number as a point of reference only. However, individual transcript sequences of the same gene can differ through naturally occurring variations (e.g. polymorphisms), each with its own valid existence. This clone is substantially in agreement with the reference, but a complete review of all prevailing variants is recommended prior to use. [More info](#)

OTI Annotation: This clone was engineered to express the complete ORF with an expression tag. Expression varies depending on the nature of the gene.

Components: The ORF clone is ion-exchange column purified and shipped in a 2D barcoded Matrix tube containing 10ug of transfection-ready, dried plasmid DNA (reconstitute with 100 ul of water).

Reconstitution Method:

1. Centrifuge at 5,000xg for 5min.
2. Carefully open the tube and add 100ul of sterile water to dissolve the DNA.
3. Close the tube and incubate for 10 minutes at room temperature.
4. Briefly vortex the tube and then do a quick spin (less than 5000xg) to concentrate the liquid at the bottom.
5. Store the suspended plasmid at -20°C. The DNA is stable for at least one year from date of shipping when stored at -20°C.

RefSeq: [NM_001288713.1](#), [NP_001275642.1](#)

RefSeq Size: 3354 bp

RefSeq ORF: 2517 bp

Locus ID: 4745

UniProt ID: [Q92832](#)

Cytogenetics: 11p15.1

Protein Families: Secreted Protein

MW: 93.3 kDa

Gene Summary: This gene encodes a cytoplasmic protein that contains epidermal growth factor (EGF)-like repeats. The encoded heterotrimeric protein may be involved in cell growth regulation and differentiation. A similar protein in rodents is involved in craniosynostosis. Alternative splicing results in multiple transcript variants. [provided by RefSeq, Dec 2013]