

## Product datasheet for **RC239651**

### LGR5 (NM\_001277227) Human Tagged ORF Clone

#### Product data:

|                    |  |
|--------------------|--|
| Product Type:      | Expression Plasmids                        |
| Product Name:      | LGR5 (NM_001277227) Human Tagged ORF Clone |
| Tag:               | Myc-DDK                                    |
| Symbol:            | LGR5                                       |
| Synonyms:          | FEX; GPR49; GPR67; GRP49; HG38             |
| Vector:            | pCMV6-Entry (PS100001)                     |
| E. coli Selection: | Kanamycin (25 ug/mL)                       |
| Cell Selection:    | Neomycin                                   |



[View online »](#)

**ORF Nucleotide Sequence:**

>RC239651 representing NM\_001277227  
 Red=Cloning site Blue=ORF Green=Tags(s)

TTTTGTAATACGACTCACTATAGGGCGGCCGGAATTCGTGACTGGATCCGGTACCGAGGAGATCTGCC  
 GCC**CGCATCGCC**

ATGGACACCTCCCGGCTCGGTGTGCTCCTGTCTTGCCTGTGCTGCTGCAGCTGGCGACCGGGGACAGT  
 CCCCCAGGTCTGGTGTGTGCTGAGGGGCTGCCCCACACACTGTATTGCGAGCCCGACGGCAGGATGTT  
 GCTCAGGGTGGACTGCTCCGACCTGGGGCTCTCGGAGCTGCCTTCCAACCTCAGCGTCTTACCTCTAC  
 CTAGACCTCAGTATGAACAACATCAGTCAGCTGCTCCGAATCCCCTGCCAGTCTCCGCTTCTGGAGG  
 AGTTACGTCTTGGCGGAAACGCTCTGACATACATTCCCAAGGGAGCATTCACTGGCCTTACAGTCTTAA  
 AGTTCTTATGCTGCAGAATAATCAGCTAAGACACGTACCCACAGAAGCTCTGCAGAATTTGCGAAGCCTT  
 CAATCCCTACATCTCCATAACAATAGAATCCACTCCCTGGGAAAGAAATGCTTTGATGGGCTCCACAGCC  
 TAGAGACTTTAGATTTAAATTACAATAACCTTGATGAATCCCCACTGCAATTAGGACACTCTCCAACCT  
 TAAAGAACTAGGATTTCCATAGCAACAATATCAGGTCGATACCTGAGAAAGCATTGTAGGCAACCCTTCT  
 CTATTACAATACATTTCTATGACAATCCCATCCAGTTTGTGGGAGATCTGCTTTTCAACATTTACCTG  
 AACTAAGAACTGACTCTGAATGGTGCCTCACAATAACTGAATTTCTGATTTAACTGGAAGTCAAAA  
 CCTGGAGAGTCTGACTTTAACTGGAGCACAGATCTCATCTTCTCCTCAAACCGTCTGCAATCAGTTACCT  
 AATCTCCAAGTGTAGATCTGTCTTACAACCTATTAGAAGATTTACCCAGTTTTTTCAGTCTGCCAAAAGC  
 TTCAGAAAATTGACCTAAGACATAATGAAATCTACGAAATTAAGTTGACACTTTCCAGCAGTTGCTTAG  
 CCTCCGATCGTGAAATTTGGCTTGGAAACAAAATGCTATTATCCACCCAATGCATTTCCACTTTGCCA  
 TCCCTAATAAAGCTGGACCTATCGTCCAACCTCCTGTCGCTTTTCTATAACTGGGTTACATGGTTTAA  
 CTCATTTAAAATTAACAGGAAATCATGCCTTACAGAGCTTGATATCATCTGAAAACCTTTCCAGAATCAA  
 GGTTATAGAAAATGCCTTATGCTTACCAGTGTGTCATTTGGAGTGTGTGAGAATGCCTATAAGATTTCT  
 AATCAATGGAATAAAGGTGACAACAGCAGTATGGACGACCTTCATAAGAAAGATGCTGGAATGTTTCAGG  
 CTCAAGATGAACGTGACCTTGAAGATTTCTGCTTACTTTGAGGAAGACCTGAAAGCCCTTCATTCAGT  
 GCAGTGTTCACCTTCCCCAGGCCCTTCAAACCTGTGAACACCTGCTTGTGATGGCTGGCTGATCAGAATT  
 GGAGTGTGGACCATAGCAGTTCTGGCAGTACTTGTAAATGCTTTGGTACTTCAACAGTTTTTCAGATCCC  
 CTCTGTACATTTCCCCATTAACCTGTTAATTGGGGTTCATCGCAGCAGTGAACATGCTCACGGGAGTCTC  
 CAGTCCGTGCTGGCTGGTGTGGATGCGTTCACCTTTGGCAGCTTGCACGACATGGTGCCTGGTGGGAG  
 AATGGGGTTGGTTGCCATGTCATTGGTTTTTTGTCCATTTTGTCTCAGAATCATCTGTTTTCTGCTTA  
 CTCTGGCAGCCCTGGAGCGTGGTTCTCTGTGAAATATTCTGAAAATTTGAAACGAAAGCTCCATTTTC  
 TAGCCTGAAAGTAATCATTTTGCTCTGTGCCCTGCTGGCCTTGACCATGGCCGAGTTCCCTGCTGGGT  
 GGCAGCAAGTATGGCGCCTCCCCTCTCTGCCTGCCTTTGCCTTTTGGGGAGCCAGCACCATGGGCTACA  
 TGGTGCCTCTCATCTTGCTCAATCCCTTTGCTTCTCATGATGACCATTGCCTACACCAAGCTCTACTG  
 CAATTTGGACAAGGGAGACCTGGAGAATATTGGGACTGCTCTATGGTAAAACACATTGCCCTGTTGCTC  
 TTCACCAACTGCATCCTAAACTGCCCTGTGGCTTTCTTGTCTTCTCTTTAATAAACCTTACATTTA  
 TCAGTCTTGAAGTAATTAAGTTTATCCTTCTGGTGGTACTCCACTTCTGCATGTCTCAATCCCCTTCT  
 CTACATCTTGTCAATCCTCAGTTAAGGAGGATCTGGTGGCCTGAGAAAAGCAAACCTACGTCTGGACA  
 AGATCAAAAACACCAAGCTTGTGATCAATTAACCTCTGATGATGCGAAAAACAGTCTGTGACTCAACTC  
 AAGCCTTGGTAACCTTTACCAGCTCCAGCATCACTTATGACCTGCCTCCAGTTCCTGCTGCCATCACCAGC  
 TTATCCAGTACTGAGAGCTGCCATCTTCTCTGTGGCATTGTCCCATGTCTC

**ACGCGT**ACGCGGCCGCTCGAGCAGAAACTCATCTCAGAAGAGGATCTGGCAGCAATGATATCCTGGATT  
 ACAAGGATGACGACGATAAGGTTTAA

**Protein Sequence:** >RC239651 representing NM\_001277227  
Red=Cloning site Green=Tags(s)

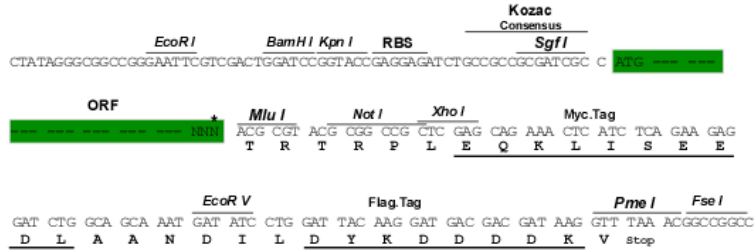
MDTSRLGVLLSLPVLLQLATGGSSPRSGVLLRGCPHCHCEPDGRMLLRVDCSDLGSELPSNLSVFTSY  
LDLSMNNISQLLPNPLSLRFLEELRLAGNALTYIPKGAFGLYSLKVLMLQNNQLRHPVTEALQNLRS  
QSLHLHNNRIHSLGKKCFDGLHSELELDLNYNNLDEFPTAIRTLSNLKELGFHSNNIRSIPEKAFVGNPS  
LITIHFDNPIQFVGRSAFQHLPELRITLNGASQITEFPDLTGTANLESLTLTGAQISSLPQTVCNQLP  
NLQVLDLSYNLLEDLPSFSVCQKLQKIDLRHNEIYEIKVDTFQQLSLRSLNLAWNKIAIHPNAFSTLP  
SLIKLDLSSNLLSSFPIITGLHGLTHLKLGTGNHALQSLISSENFPELKVIEMPYAYQCCAFGVCENAYKIS  
NQWNKGDNSMDDLHKKDAGMFAQDERDLEDFLLDFEEDLKALHSVQCSPSPGPFKPEHLLDGWLIRI  
GVWTIAVLALTCNALVTSTVFRSPLYISPIKLLIGVIAAVNMLTGVSAYLAGVDAFTFGSFARHGAWWE  
NGVGCHVIGFLSIFASESSVFLTLAALERGFVSKYSAKFETKAPFSSLKVIILLCALLALMAAVPLLG  
GSKYGASPLCLPLPFGEPSTMGYMVALILLNSLCFLMMTIAYTKLYCNLDKGDLENIWDCSMVKHIALLL  
FTNCILNCPVAFLSFSSLINLTFISPEVIKFILLVVVPLPACLNPLLYILFNPHFKEDLVSLRKQTYVWT  
RSKHPSLMSINSDDVEKQSCDSTQALVTFTSSSITYDLPPSSVSPAYPVTESCHLSSVAFVPCL

TRTRPLEQKLISEEDLAANDILDYKDDDDKV

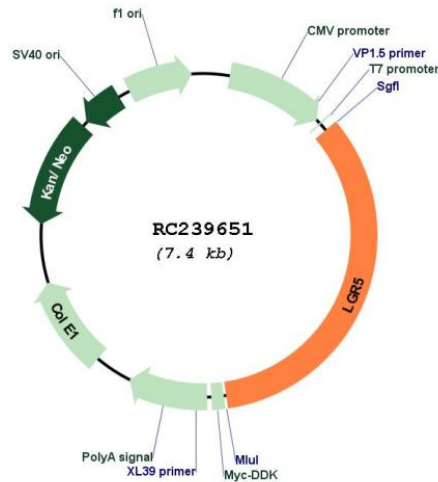
**Restriction Sites:** Sgfl-MluI

Cloning Scheme:

Cloning sites used for ORF Shutting:



\* The last codon before the Stop codon of the ORF

**Plasmid Map:**


**ACCN:** NM\_001277227

**ORF Size:** 2505 bp

**OTI Disclaimer:** The molecular sequence of this clone aligns with the gene accession number as a point of reference only. However, individual transcript sequences of the same gene can differ through naturally occurring variations (e.g. polymorphisms), each with its own valid existence. This clone is substantially in agreement with the reference, but a complete review of all prevailing variants is recommended prior to use. [More info](#)

**OTI Annotation:** This clone was engineered to express the complete ORF with an expression tag. Expression varies depending on the nature of the gene.

**Components:** The ORF clone is ion-exchange column purified and shipped in a 2D barcoded Matrix tube containing 10ug of transfection-ready, dried plasmid DNA (reconstitute with 100 ul of water).

**Reconstitution Method:**

1. Centrifuge at 5,000xg for 5min.
2. Carefully open the tube and add 100ul of sterile water to dissolve the DNA.
3. Close the tube and incubate for 10 minutes at room temperature.
4. Briefly vortex the tube and then do a quick spin (less than 5000xg) to concentrate the liquid at the bottom.
5. Store the suspended plasmid at -20°C. The DNA is stable for at least one year from date of shipping when stored at -20°C.

**RefSeq:** [NM\\_001277227.2](#)

**RefSeq Size:** 4409 bp

**RefSeq ORF:** 2508 bp

**Locus ID:** 8549

**UniProt ID:** [O75473](#)

**Cytogenetics:** 12q21.1

**Protein Families:** Druggable Genome, GPCR, Transmembrane

**MW:** 92.5 kDa

**Gene Summary:** The protein encoded by this gene is a leucine-rich repeat-containing receptor (LGR) and member of the G protein-coupled, 7-transmembrane receptor (GPCR) superfamily. The encoded protein is a receptor for R-spondins and is involved in the canonical Wnt signaling pathway. This protein plays a role in the formation and maintenance of adult intestinal stem cells during postembryonic development. Several transcript variants encoding different isoforms have been found for this gene. [provided by RefSeq, Sep 2015]