

Product datasheet for **RC239555**

Rabenosyn 5 (RBSN) (NM_001302378) Human Tagged ORF Clone

Product data:

Product Type:	Expression Plasmids
Product Name:	Rabenosyn 5 (RBSN) (NM_001302378) Human Tagged ORF Clone
Tag:	Myc-DDK
Symbol:	Rabenosyn 5
Synonyms:	Rabenosyn-5; ZFYVE20
Mammalian Cell Selection:	Neomycin
Vector:	pCMV6-Entry (PS100001)
E. coli Selection:	Kanamycin (25 ug/mL)



[View online »](#)

**ORF Nucleotide
Sequence:**

>RC239555 representing NM_001302378
 Red=Cloning site Blue=ORF Green=Tags(s)

TTTTGTAATACGACTCACTATAGGGCGGCCGGAATTCGTCGACTGGATCCGGTACCGAGGAGATCTGCC
 GCC**CGGATCGCC**

ATGGCTTCTCTGGACACCCAGGGGAAGTGAGGGAGGGCTTCCTCTGCCCTCTGTGCCTGAAGGATCTGC
 AGTCTTTCTATCAGCTTCACTCACATTACGAGGAAGAACAACACTCAGGGGAAGACCGTGATGTCAAAGGGCA
 AATTAAGTCTTGTCCAGAAGGCTAAAAAAGCAAAGGACAGGTTGTTGAAACGAGAAGGGGATGATCGA
 GCAGAGTCAGGGACCCAAGGATATGAGTCTTTCAGCTATGGAGGGGTTGATCCTTACATGTGGGAACCCC
 AGGAGCTTGGTGTGTGAGAAGCCATCTTCCGACTTCAAAAAACACCGAGCTGTAGAATTGACCACTA
 TGTTGTGGAAGTCAATAAACTAATAATCAGGTTAGAGAAGCTCACTGCATTTGACAGAACAATACTGAG
 TCTGCAAAGATTCGAGCAATAGAAAAGTCTGTGGTGCCTTGGGTCAACGACCAGGATGTCCTTTCTGTC
 CAGACTGTGGGAATAAGTTCAGCATCCGGAACCGCCACCCTGCCGCTCTGCGGGTCTATTATGTG
 CAAGAAGTGTATGGAGCTCATCAGCTTCCCTTGGCAAACAAGCTCACCAGTGCCAGCAAGGAGTCCCTG
 AGCACCCACACAGCCCCAGCCAGTCACCAACAGTGTCCATGGCTCCCGCCGAGGCAGCATCAGCAGCA
 TGAGCAGTGTGAGCTCGGTCTGGATGAGAAGGACGATGACCGGATCCGCTGCTGTACACACTGCAAGGA
 CACGCTGCTCAAGAGAGAGCAGCAGATTGATGAGAAGGAGCACACACCTGACATCGTGAAGCTCTACGAG
 AAATTACGACTTTGCATGGAGAAAGTTGACCAGAAAGCTCCAGAATACATCAGGATGGCAGCATCATTAA
 ATGCTGGGGAGACAACCTACAGTCTGGAACATGCCAGTGACCTTCGAGTGGAAAGTGCAGAAAAGTGTATGA
 GCTGATAGACGCTTAAAGTAAGAAGATCTAACCTTGGGCTTGAACCAGGACCCTCCACCACATCCAAGC
 AATTTGCGGCTGCAGAGAATGATCAGACTCAGTACACTTTTGTGCAGGAAAAGTTGCTTGGTTTGA
 TGTCACTGCCAACCAAGAACAGTTTGGGAAGTGAAGAAAGAAAGGAAAGGAGGAAATGGAGAGGAAGAG
 GGCCGTGGAGAGACAAGCTGCCCTGGAGTCCCAGCGAAGGCTTGAGGAAAAGGCAGAGTGGCCTGGCTTCT
 CGAGCGGCCAACGGGAGGTGGCATCTCTCCGAGGGGCCCTGCCCTTGGAAAAGGCTGAGGGCTGGC
 TCCCACTGTGAGGAGTCAAGGGCAGAGTGAAGTCAAGCCGCTCCTCCAGCAGATCCACAACATCAC
 ATCATTATCAGGCAGGCCAAGGCCGCGGGCCGCATGGATGAAGTGCACACTCTGCAGGAGAACCTGCGG
 CAGCTGCAGGACGAGTATGACCAGCAGCAGACAGAGAAGGCCATCGAGCTGTCCCGAGGCAGGCTGAGG
 AGGAGGACCTGCAGCGGGAACAGCTGCAGATGTTGCGTGAACGGGAGTTGGAACGAGAAAGGGAGCAGTT
 TCGGGTGGCATCCCTGCACACACGACTCGGTCCCTGGACTTCAGAGAAATCGGCCCTTTTCAGCTGGAG
 CCCAGCAGAGAGCCTCGCACCCACCTTGTATGCTTTGGATCTAGGCTCTTCCCAGTTCCAAGCAGCA
 CAGCTCCCAAGACCCCTTCACTTAGCTCAACTCAACCCACCAGAGTGTGGTCTGGGCCCCAGCCGTTGG
 CCAGGAGCGCTTACCCAGAGCAGCATGCCACAGCAACATGAGGGGCCCTCCTTAAACCCCTTTGATGAG
 GAAGACCTCTCCAGCCCCATGGAAGAGGCCACTACTGGTCTCCTGCTGCAGGGGTTTCTTAGACCCCT
 CAGCCCGCATCCTGAAAGAGTACAATCCTTTGAGGAAGAGGACGAGGAGGAGGAAGCAGTGGCAGGGAA
 TCCATTATTCAGCCAGACAGCCAGCTCCTAACCCCTTCAGTGAGGAAGACGAACATCCCAGCAGAGG
 CTCTCAAGCCCTCTGGTTCCTGGTAACCCCTTTGAGGAACCCACCTGTATCAACCCCTTTGAGATGGACA
 GTGACAGTGGGCCAGAGGCTGAGGAGCCATAGAGGAAGAGCTCCTCCTGCAGCAGATCGATAACATCAA
 GGCATACATCTTTGATGCCAAGCAGTGGCGCCGCTGGATGAGGTAGAGGTGCTGACAGAGAATCTGCGG
 GAGCTGAAGCACACCTTGCCCAAGCAGAAGGGGGCACTGAC

ACGCGTACGCGGCCGCTCGAGCAGAACTCATCTCAGAAGAGGATCTGGCAGCAAATGATATCCTGGATT
 ACAAGGATGACGACGATAAGGTTTAA

Protein Sequence: >RC239555 representing NM_001302378
 Red=Cloning site Green=Tags(s)

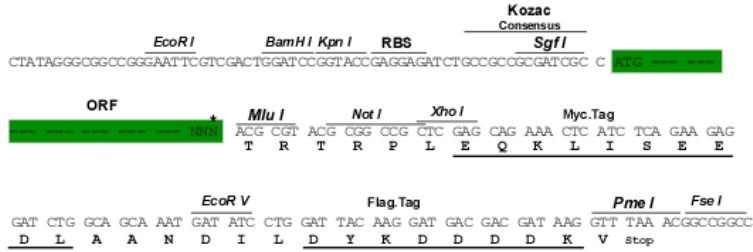
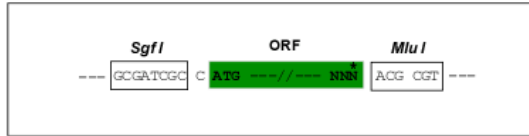
MASLDDPGEVREGFLCPLCLKDLQSFYQLHSHYEEHSGEDRDVKGQIKSLVQKAKKAKDRLLKREGDDR
 AESGTQGYESFSYGGVDPYMWEPQELGAVRSHLSDFKKHRAARIDHYVVEVNKLIIRLEKLTAFDRTNTE
 SAKIRAIIEKSVVPWVNDQVDFPCDGNKFSIRNRRHHCRLCGSIMCKKCMELISLPLANKLTSASKESL
 STHTSPSQSPNSVHGSRRGSISSMSSVSSVLDEKDDDRIRCCTHCKDTLLKREQQIDEKEHTPDIVKLYE
 KLRLCMEKVDQKAPEYIRMAASLNAGETTSLEHASDLRVEVQKVYELIDALSKKILTLGLNQDPPPHPS
 NLRLQRMIRYSATLQVQEKLLGLMSLPTKEQFEELKKRKEEMERKRAVERQAALLESQRRLEERQSGLAS
 RAANGEVASLRRGPAPLRKAEGWPLSGGQGSSESDPQLLQIHNITSFIRQAKAAGRMDEVRTLQENLR
 QLQDEYDQQTEKAIELSRRAEEEDLQREQLQMLRERELEREREQFRVASLHTRTRSLDFREIGPFQLE
 PSREPRTHLAYALDLGSSPVPSSTAPKTPSLSSTQPTRVWSGPPAVGQERLPQSSMPQQHEGPSLNPFD
 EDLSSPMEEATTGPPAAGVSLDPSARILKEYNPFEEEEEEAVAGNPFIQPDSAPNPFSEDEHPQQR
 LSSPLVPGNPFEEPTCINPFEMSDSGPEAEEPIEEELLLQQIDNIKAYIFDAKQCGRLEVEVLTENLR
 ELKHTLAKQKGGTD

TRTRPLEQKLISEEDLAANDILDYKDDDDKV

Restriction Sites: Sgfl-MluI

Cloning Scheme:

Cloning sites used for ORF Shuttling:



* The last codon before the Stop codon of the ORF

ACCN: NM_001302378

ORF Size: 2352 bp

OTI Disclaimer: Due to the inherent nature of this plasmid, standard methods to replicate additional amounts of DNA in E. coli are highly likely to result in mutations and/or rearrangements. Therefore, OriGene does not guarantee the capability to replicate this plasmid DNA. Additional amounts of DNA can be purchased from OriGene with batch-specific, full-sequence verification at a reduced cost. Please contact our customer care team at custsupport@origene.com or by calling 301.340.3188 option 3 for pricing and delivery.

The molecular sequence of this clone aligns with the gene accession number as a point of reference only. However, individual transcript sequences of the same gene can differ through naturally occurring variations (e.g. polymorphisms), each with its own valid existence. This clone is substantially in agreement with the reference, but a complete review of all prevailing variants is recommended prior to use. [More info](#)

OTI Annotation: This clone was engineered to express the complete ORF with an expression tag. Expression varies depending on the nature of the gene.

Components: The ORF clone is ion-exchange column purified and shipped in a 2D barcoded Matrix tube containing 10ug of transfection-ready, dried plasmid DNA (reconstitute with 100 ul of water).

Reconstitution Method:

1. Centrifuge at 5,000xg for 5min.
2. Carefully open the tube and add 100ul of sterile water to dissolve the DNA.
3. Close the tube and incubate for 10 minutes at room temperature.
4. Briefly vortex the tube and then do a quick spin (less than 5000xg) to concentrate the liquid at the bottom.
5. Store the suspended plasmid at -20°C. The DNA is stable for at least one year from date of shipping when stored at -20°C.

RefSeq: [NM_001302378.2](#)

RefSeq Size: 6540 bp

RefSeq ORF: 2355 bp

Locus ID: 64145

UniProt ID: [Q9H1K0](#)

Cytogenetics: 3p25.1

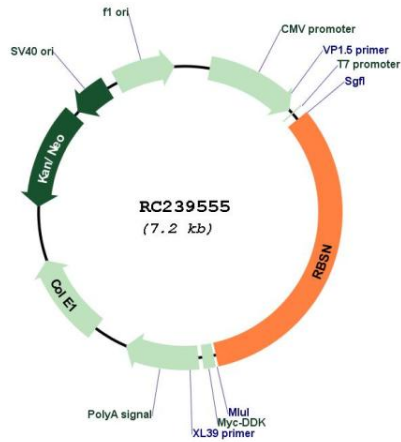
Protein Families: Transcription Factors

Protein Pathways: Endocytosis

MW: 89.3 kDa

Gene Summary: This gene encodes a protein that belongs to the FYVE zinc finger family of proteins. The encoded protein interacts with Ras-related proteins that regulate membrane trafficking. A missense mutation in this gene is associated with a defect in the early endocytic pathway. Alternative splicing results in multiple transcript variants. [provided by RefSeq, Oct 2014]

Product images:



Circular map for RC239555