

Product datasheet for **RC239535**

CDC2L1 (CDK11B) (NM_001291345) Human Tagged ORF Clone

Product data:

Product Type:	Expression Plasmids
Product Name:	CDC2L1 (CDK11B) (NM_001291345) Human Tagged ORF Clone
Tag:	Myc-DDK
Symbol:	CDK11B
Synonyms:	CDC2L1; CDK11; CDK11-p46; CDK11-p58; CDK11-p110; CLK-1; p58; p58CDC2L1; p58CLK-1; PITSLREA; PK58
Vector:	pCMV6-Entry (PS100001)
E. coli Selection:	Kanamycin (25 ug/mL)
Cell Selection:	Neomycin



[View online »](#)

ORF Nucleotide
Sequence:

>RC239535 representing NM_001291345
Red=Cloning site Blue=ORF Green=Tags(s)

TTTTGTAATACGACTCACTATAGGGCGGCCGGGAATTCGTCGACTGGATCCGGTACCGAGGAGATCTGCC
GCC**CGGATCGCC**

ATGGGTGATGAAAAGGACTCTTGAAAAGTAAAACCTTTAGATGAAATTTTCAGGAAAAGAAACGAAGGA
AGGAACAAGAGGAGAAAAGCAGAGATAAACCGCTTAAAAAATTCTGATGACCGGGATTCCAAGCGGGATT
CCTTGAGGAGGGGGAGCTGAGAGATCACCGCATGGAGATCACAATAAGGAACTCCCGTATAGAAGAGAA
GACTCTATGGAAGACAGAGGAGAAGAAGATGATTTCTTGGCCATCAAACCACCCAGCAAATGTCTCGGA
AAGAAAAAGCTCATCACAGAAAAGATGAAAAGAGAAAAGAAAACGGAAGCATGTAGAGTGAAAGAAAA
AGAAAGAGAGCACGAACGTCGAAAACGGCATCGAGAAGAACAGGATAAAGCTCGCCGGGAATGGGAAAGA
CAGAAGAGAAGGGAGATGGCAAGGGAGCATTCCAGGAGAGAAAGGGACCGCTTGGAGCAGTTAGAAAGGA
AGCGGGAGCGGGAGCGCAAGATGCGGGAGCAGCAGAAGGAGCAGCGGGAGCAGAAGGAGCGCGAGCGGG
GGCAGAGGAGCGGGCAAGGAGCGGGAGGCCCGCAGGGAAGTGTCTGCACATCACCGAACGATGAGAGAG
GACTACAGCGACAAAGTAAAGCCAGCCACTGGAGTCGACGCCCGCTCGGCCGGCGGGAGCGGTTCCG
AGTTGGGAGACGGCCGAAGCCAGTAAAAGAAGAGAAAATGGAAGAAAGGGACCTGCTGTCCGACTTACA
GGACATCAGCGACAGCGAGAGGAAGACCAGCTCGGCCGAGTCTCGTCAGCGGAATCAGGCTCAGTTCT
GAGGAAGAAGAGGAGGAGGAGGAAGAGGAGGAGGAGGAAGGGAGCACCAGTGAAGAAATCAGAGGAGGAGG
AGGAGGAAGAGGAAGAGGAGGAGGAGGAGGAGGAGGAGGAGGAGGAGGAGGAGGAGGAGGAGGAGGAGG
AGAAGTAAAGTGAAGAAAGTGAAGTGAAGTGAAGAACGAGAAAATGAAAACACCTCTTGGTTGTTCCA
GAGTACGGTTCGACCGAGATTCGGGGAGAGTGAAGAAGCAGAGGAAGAAGTGGGTGAGGAACGCCGC
AGAGCAGCGCCCTGACAGAGGGCGACTATGTGCCCGACTCCCTGCCCTGTGCCCATCGAGCTCAAGCA
GGAGCTGCCCAAGTACCTGCCGGCCCTGCAGGGCTGCCGGAGCGTCGAGGAGTTCCAGTGCCTGAACAGG
ATCGAGGAGGGCACCTATGGAGTGGTCTACAGAGCAAAAGACAAGAAAACAGATGAAATTGTGGCTCTAA
AGCGGCTGAAGATGGAGAAGGAGAAGGAGGGCTTCCCGATCACGTCGCTGAGGGAGATCAACACCATCT
CAAGGCCCAGCATCCCAACATCGTCACCGTTAGAGAGATTGTGGTGGCAGCAACATGGACAAGATCTAC
ATCGTATGAACTATGTGGAGCACGACCTCAAGAGCCTGATGGAGACCATGAAACAGCCCTTCTGCCAG
GGGAGGTGAAGACCCTGATGATCCAGTCTGCTGCGTGGGGTAAAACACCTGCACGACAACCTGGATCTGCA
CCGTGACCTCAAGACGTCAACCTGCTGCTGAGCCACGCCGCATCTCAAGTGGGTGACTTCGGGCTG
GCGCGGGAGTACGGATCCCTCTGAAGGCCTACACCCCGTCTGGTGGTACCTGTGGTACCGCGCCCCAG
AGCTGCTGCTTGGTGCCAAGGAATACTCCACGGCCGTGGACATGTGGTCAAGTGGTTGCATCTTCGGGGA
GCTGCTGACTCAGAAGCCTCTGTTCCCCGGGAAGTCAGAAATCGATCAGATCAACAAGGTGTTCAAGGAT
CTGGGGACCCCTAGTGAGAAAATCTGGCCCGGTACAGCGAGCTCCCAGCAGTCAAGAAGATGACCTTCA
GCGAGCACCCCTACAACAACCTCCGCAAGCGCTTCGGGGCTCTGCTCTCAGACCAGGGCTTCGACCTCAT
GAACAAGTTCTGACCTACTTCCCCGGGAGGAGGATCAGCGCTGAGGACGGCCTCAAGCATGAGTATTT
CGCGAGACCCCTCCCATCGACCCCTCCATGTTCCCCACGTGGCCCGCAAGAGCGAGCAGCAGCGTG
TGAAGCGGGGACACAGCCCGAGGCCCTGAGGGAGGCTGGGCTACAGCCAGCTGGGTGACGACGACCT
GAAGGAGACGGGCTTCCACCTTACCACCACGAACCAGGGGGCCTTGCCGCGGGCCCCGGCTTCAGCCTC
AAGTTC

ACGCGTACGCGGCCGCTCGAGCAGAAACTCATCTCAGAAGAGGATCTGGCAGCAAATGATATCTGGATT
ACAAGGATGACGACGATAAGGTTAA

Protein Sequence: >RC239535 representing NM_001291345
 Red=Cloning site Green=Tags(s)

```

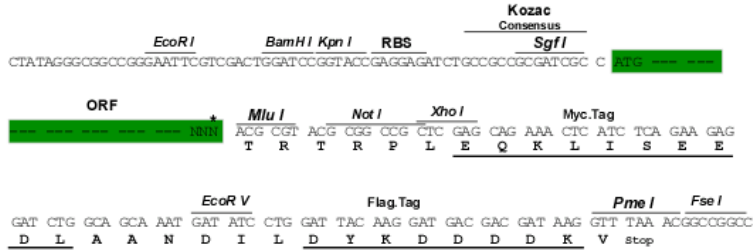
MGDEKDSWKVKTLDLDEILQEKKRRKEQEEKAEIKRLKNSDDDRSKRDSLEEGELRDHRMEITIRNSPYRRE
DSMEDRGEEDDSLAIKPPQQMSRKEKAHHRKDEKRKEKRKHARVKEKEREHERRKRHREEQDKARREW
QKRREMARHSRRERDRLEQLERKRERERKMREQKEQREKERERRAEERRKEREARREVSAAHRTMRE
DYSKVKASHWSRSPRPPRERFELGDGRKPVKEEKMEERDLLSDLQDISDSEKTSSEAESSAESGSGS
EEEEEEEEEEEEEGSTSEEEEEEEEEEEEEETGSNSEEASEQSAEEVSEEEEMSEDEERENENHLLVVP
ESRFDRDSGESEEAEEVGEVGPQSSALTEGDYVPDSPALSPIELKQELPKYLPALQGCRSVVEEFQCLNR
IEEGTYGVVYRAKDKTDEIVALKRLKMEKEKEGFPITSLREINTILKAQHPNIVTVREIVVGSNMDKIY
IVMNYVEHDLKSLMETMKQPFPLPGEVKTLMIQLLRGVKHLHDNWILHRDLKTSNLLL SHAGILKVGDFGL
AREYGSPLKAYTPVVVTLWYRAPELLLGAKEYSTAVDMWSVGCIFGELLTQKPLFPGKSEIDQINKVFKD
LGTPSEKIWPGYSELPAVKKMTFSEHPYNNLRKRFGALLSDQGFDMNKFLTYFPGRRI SAEDGLKHEYF
RETPLPIDPSMFPTWPAKSEQQVVKRGTSRPPPEGGLGYSQLGDDDLKETGFHLTTTNGASAAGPGFSL
KF
  
```

TRTRPLEQKLI SEEDLAANDILDYKDDDDKV

Restriction Sites: SgfI-MluI

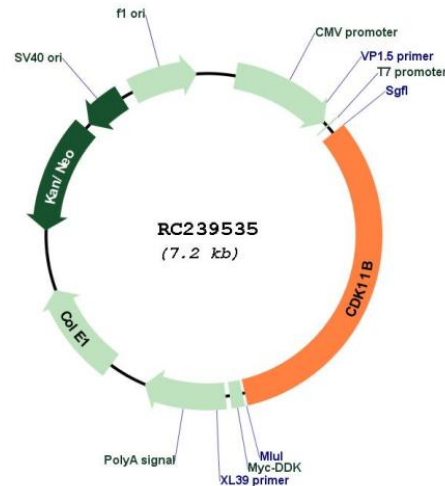
Cloning Scheme:

Cloning sites used for ORF Shuttling:



* The last codon before the Stop codon of the ORF

Plasmid Map:



ACCN: NM_001291345

ORF Size: 2316 bp

OTI Disclaimer: The molecular sequence of this clone aligns with the gene accession number as a point of reference only. However, individual transcript sequences of the same gene can differ through naturally occurring variations (e.g. polymorphisms), each with its own valid existence. This clone is substantially in agreement with the reference, but a complete review of all prevailing variants is recommended prior to use. [More info](#)

OTI Annotation: This clone was engineered to express the complete ORF with an expression tag. Expression varies depending on the nature of the gene.

Components: The ORF clone is ion-exchange column purified and shipped in a 2D barcoded Matrix tube containing 10ug of transfection-ready, dried plasmid DNA (reconstitute with 100 ul of water).

Reconstitution Method:

1. Centrifuge at 5,000xg for 5min.
2. Carefully open the tube and add 100ul of sterile water to dissolve the DNA.
3. Close the tube and incubate for 10 minutes at room temperature.
4. Briefly vortex the tube and then do a quick spin (less than 5000xg) to concentrate the liquid at the bottom.
5. Store the suspended plasmid at -20°C. The DNA is stable for at least one year from date of shipping when stored at -20°C.

RefSeq: [NM_001291345.2](#)

RefSeq Size: 3072 bp

RefSeq ORF: 2319 bp

Locus ID: 984

UniProt ID: [P21127](#)

Cytogenetics: 1p36.33

Protein Families: Druggable Genome, Transcription Factors

MW: 90.7 kDa

Gene Summary: This gene encodes a member of the serine/threonine protein kinase family. Members of this kinase family are known to be essential for eukaryotic cell cycle control. Due to a segmental duplication, this gene shares very high sequence identity with a neighboring gene. These two genes are frequently deleted or altered in neuroblastoma. The protein kinase encoded by this gene can be cleaved by caspases and may play a role in cell apoptosis. Alternative splicing results in multiple transcript variants. [provided by RefSeq, Apr 2014]