

Product datasheet for **RC239504**

MTSS1 (NM_001282971) Human Tagged ORF Clone

Product data:

Product Type:	Expression Plasmids
Product Name:	MTSS1 (NM_001282971) Human Tagged ORF Clone
Tag:	Myc-DDK
Symbol:	MTSS1
Synonyms:	MIM; MIMA; MIMB
Vector:	pCMV6-Entry (PS100001)
E. coli Selection:	Kanamycin (25 ug/mL)
Cell Selection:	Neomycin



[View online »](#)

ORF Nucleotide Sequence:

>RC239504 representing NM_001282971
 Red=Cloning site Blue=ORF Green=Tags(s)

TTTTGTAATACGACTCACTATAGGGCGGCCGGGAATTCGTCGACTGGATCCGGTACCGAGGAGATCTGCC
 GCC**CGGATCGCC**

ATGGAGGCTGTGATTGAGAAGGAATGCAGCGCGCTCGGAGGCCTCTTCCAGACCATCATCAGCGACATGA
 AGGGGAGCTATCCAGTTTGGGAAGATTTTATAAAACAAAGCAGGAAAGCTGCAGTCCAGCTTCGGACAAC
 AGTAGTAGCAGCAGCTGCCTTCTTGAGCGCTTTTCAAAAAGTGGCTGACATGGCCACCAACACACGTGGT
 GGGACCAGGGAGATTGGATCTGCTCTACCAGGATGTGCATGAGGCACAGAAGCATTGAAGCCAAGCTGA
 GGCAGTTTTGAGCGCTTAAATTGATTGTCTGATAAAACCACTTCAAGAACAGATGGAAGAATGGAAGAA
 AGTGGCCAACAGCTGGATAAAGACCACGCAAAAGAATAAAGAAAGCCCGCAAGAGATAAAAAAGAAG
 TCCTCGGATACGCTGAACTGCAGAAGAAAGCAAAAAAGTGGACTCTTGGGAGAGGTGATATCCAGC
 CTCAGTTGGACAGTGTCTCAAGATGTCAATGATAAGTATCTTATTGGAAGAAACAGAAAAGCAGGC
 TGTCGGGAAGGCTTTGATTGAAGAAGCTGGCCGATTCTGTACCTTCATCTCTATGCTGCGGCCAGTGATT
 GAAGAAGAAATCTCAATGCTAGGGGAAATAACCCACCTTCAGACCATCTCGGAAGATCTAAAAAGCCTGA
 CCATGGACCTCACAAACTGCCCTCCTCAAGTGAACAGGTGATTCTGGACTTGAAAGTTCTGATTACAG
 CTGGTCGTATCAGACGCCACCCTTCCCCCAGCACCACCATGTCCAGAAAGTCCAGTGTCTGCAGCAGC
 CTGAACAGTGTCAACAGCAGTACTCCCGGTCCAGCGGCTCCCACTCGCATTCCCCCAGCTCACATTACC
 GCTACCGCAGCTCCAACCTGGCCAGCAGGCTCCTGTGAGGCTGTCCAGCGTGTCTCCCATGACTCAGG
 ATTCATATCCCAGGATGCCTTCCAGTCCAAGTCAACATCCCCATGCCGCCAGAGGCCCAACCAAGTTG
 TCTAACGGGTTTTCTCACTATAGTTTATCAAGTGAAGTCCCACGTGGGGCCACGGGTGCAGGCCTTTTCC
 CTCATTGCCTGCCTGCCCTCCCGCTGCTCCCTCGGGTCACTCTGTCCACCTTCCAGACTACGCTCATT
 TTACACCATTGGGCCCGCATGTTCCCGTCATCTCAGATCCCTAGCTGGAAGGACTGGGCTAAGCCTGGG
 CCCTATGACCAGCCTCTGGTGAACACCCTGCAGCGCCGCAAGAGAAGCGAGAACCAGGCCCAACGGGG
 GAGGACCACTACCGCCAGCGGCCACCTGCAGCAGCTGAGGAGGCTCAGAGACCACGGAGCATGACTGT
 ATCGGCTGCCACCAGGCCTGGTGAAGGATGGAGGCTTGTGAGGAGCTGGCCCTGGCCCTGTCTCGGGG
 CTGCAGCTGGACACCCAGAGGAGCAGCCGGGACTCGTTCAGTGTCCAGCGGCTACAGCACCCAGACAA
 CCACCCCTGTGCTCTGAGGACACCATCCCTTCCAAGTTTCAAGTTATGATTATTTCTGTAAAGTGG
 TGACCAGGAGGCAGATCAGCAGGAGTTCGACAAGTCTCCACCATTCCAAGAAACAGCGACATCAGCCAG
 TCCTACCGACGGATGTTCCAAGCCAAGCGTCCAGCCTCAACTGCTGGCCTCCCCACCACCCTGGGACCTG
 CTATGGTCACTCCAGGGTTGCAACTATCCGACGACCCCTTCCACCAAGCCTTCTGTCCGCCGGGGAAC
 CATTGGAGCTGGTCCCATCCCCATCAAGACACCCTGATCCCTGTCAAGACCCCAACCGTCCCAGACCTC
 CCAGGGGTGTTGCCAGCCCTCCAGATGGGCCAGAAGAGCGGGGGGAGCACAGCCCTGAGTGCCTATCTG
 TGGGTGAGGGCCCAAGGTGTCAACAGCATGCCCTCCTCAATGTGGAGCGGCCAAGCTTCCGTTAACCC
 TCCACTTCCAGGCCCGAAGCCAGTATCCCTGAGGAGCACAGACAGGCAATTCCAGAAAGTGAAGCTGAA
 GACCAGGAACGGGAACCCCAAGTGCCACTGTCTCCCCAGGCCAGATTCCAGAGAGTGACCCTGCAGACC
 TGAGCCCAAGGGATACTCCACAAGGAGAAGACATGTGAACGCCATCCGAAGGGGCGTAAACTGAAGAA
 GACCACGACAAACGATCGCTCAGCCCCCTCGCTTTTCT

ACGCGTACGCGGCCGCTCGAGCAGAAACTCATCTCAGAAGAGGATCTGGCAGCAAATGATATCCTGGATT
 ACAAGGATGACGACGATAAGGTTTAA

Protein Sequence: >RC239504 representing NM_001282971
 Red=Cloning site Green=Tags(s)

MEAVIEKECSALGGLFQTIISDMKGSYPVWEDFINKAGKLQSQLRRTTVAAAAFLDAFQKVADMATNTRG
 GTREIGSALTRMCMRHRSEAKLRQFSSALIDCLINPLQEQMEEWKVANQLDKDHAKEYKKARQEIKKK
 SSDTLKLQKKAKKVDTLGRGDIQPQLDSALQDVNDKYLLLEETEKQAVRKALIEERGRCTFISMLRPVI
 EEEISMLGEITHLQTIISEDLSLMDPHKLPSSSEQVILDLDKGSYDYSWSYQTPPSSPSTMSRKSSVCSS
 LNSVNSSDSRSSGSHSPSSHYRYSNLAQQAPVRLSSVSSHDSGFI SQDAFQSKSPSPMPPEAPNL
 SNGFSHYLSSESHVPTGAGLFPHCLPASRLLPRVTSVHLPDYAHYYTIGPGMFPSSQIPSWKDWAKPG
 PYDQPLVNTLQRRKEKREPDPNGGGPTTASGPPAAAAEAQRPRSMVSAATRPGEEMEACEELALALSRG
 LQLDTRSSRDSLQCSSGYSTQTTTPCCSEDTIPQVSDYDYFVSGDQEQEFDKSSITPRNSDISQ
 SYRRMFQAKRPASTAGLPTTLGPAMVTPGVATIRRTPTKPSVRRGTIGAGPIPIKTPVIPVKTPTVPDL
 PGVLPAPPDGPPEERGEHSPESPSVGEQVTSMPSSMWSGQASVNPPLPGPKPSIPEEHRQAIPESEAE
 DQEREPPSATVSPGQIPESDPADLSPRDTPOGEDMLNAIRRGVKLKKTTTNDRSAPRFS

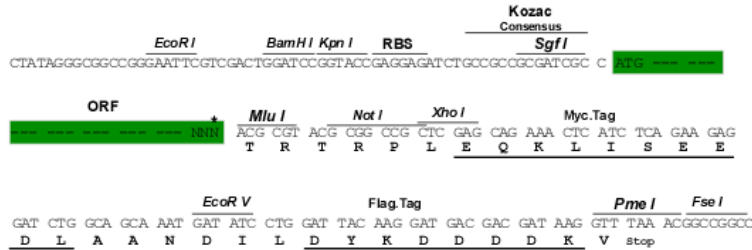
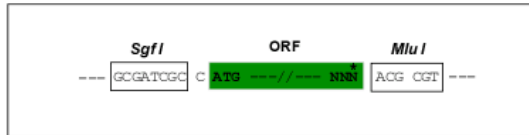
TRTRPLEQKLISEEDLAANDILDYKDDDDKV

Restriction Sites:

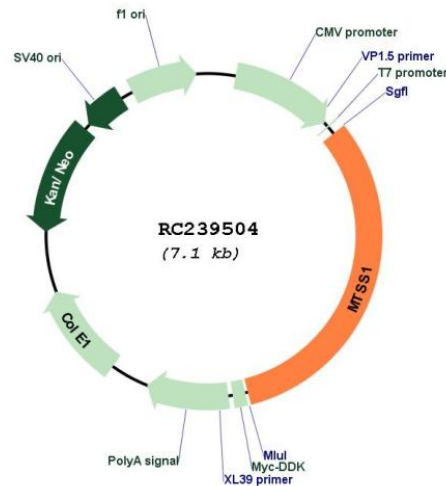
Sgfl-MluI

Cloning Scheme:

Cloning sites used for ORF Shuttling:



* The last codon before the Stop codon of the ORF

Plasmid Map:


ACCN: NM_001282971

ORF Size: 2277 bp

OTI Disclaimer: The molecular sequence of this clone aligns with the gene accession number as a point of reference only. However, individual transcript sequences of the same gene can differ through naturally occurring variations (e.g. polymorphisms), each with its own valid existence. This clone is substantially in agreement with the reference, but a complete review of all prevailing variants is recommended prior to use. [More info](#)

OTI Annotation: This clone was engineered to express the complete ORF with an expression tag. Expression varies depending on the nature of the gene.

Components: The ORF clone is ion-exchange column purified and shipped in a 2D barcoded Matrix tube containing 10ug of transfection-ready, dried plasmid DNA (reconstitute with 100 ul of water).

Reconstitution Method:

1. Centrifuge at 5,000xg for 5min.
2. Carefully open the tube and add 100ul of sterile water to dissolve the DNA.
3. Close the tube and incubate for 10 minutes at room temperature.
4. Briefly vortex the tube and then do a quick spin (less than 5000xg) to concentrate the liquid at the bottom.
5. Store the suspended plasmid at -20°C. The DNA is stable for at least one year from date of shipping when stored at -20°C.

RefSeq: [NM_001282971.1](#), [NP_001269900.1](#)

RefSeq Size: 5066 bp

RefSeq ORF: 2280 bp

Locus ID: 9788

UniProt ID: [O43312](#)
Cytogenetics: 8q24.13
Protein Families: Druggable Genome
MW: 83.1 kDa
Gene Summary: May be related to cancer progression or tumor metastasis in a variety of organ sites, most likely through an interaction with the actin cytoskeleton.[UniProtKB/Swiss-Prot Function]