

## Product datasheet for **RC239391**

### CDRT1 (NM\_001282540) Human Tagged ORF Clone

#### Product data:

Product Type:	Expression Plasmids
Product Name:	CDRT1 (NM_001282540) Human Tagged ORF Clone
Tag:	Myc-DDK
Symbol:	CDRT1
Synonyms:	C17ORF1; C17ORF1A; C17ORF1; FBXW10B; FBXW10P1; HREP; SM25H2
Vector:	pCMV6-Entry (PS100001)
E. coli Selection:	Kanamycin (25 ug/mL)
Cell Selection:	Neomycin



[View online »](#)

ORF Nucleotide  
Sequence:

>RC239391 representing NM\_001282540  
Red=Cloning site Blue=ORF Green=Tags(s)

TTTTGTAATACGACTCACTATAGGGCGGCCGGGAATTCGTCGACTGGATCCGGTACCGAGGAGATCTGCC  
GCC**CGGATCGCC**

ATGAAAACTGGAATCAAGGCTCAAGAATGCCCCCTATTTTCGTTGTGAGAAGGAACCGATTCCATCC  
CTCTATGCCGGAAGTGTGAGACGCGTGTCTTAGCCTGGAAGATCTTCTCTACCAAAGAGTGGTTCGCAG  
GATCAATGACATATCACAGAGGAGTTTCTAGTTGGCATTCTGAAGCAGTTAAATAGCTTATATTTGTTA  
CACTATTTCCAAAATATCCTTCAGACCACACAGGGAAAGGATTCATCTATAACAGGTCCCGGATCGACC  
TCAGCAAGAAAGAGGGGAAAGTTGTGAAGTCTCCTTGAACCAAATGTTGGATAAAAACAGTAGAACAGAA  
GATGAAAGAGATCTTGATTGGTTTGCGAACAGCACCCAGTGGACCAAGGCGAATTATACTCTCTTACTG  
CTGCAGATGTGCAACCCCAAATTACTGCTCACTGCTGCCAATGTGATCAGAGTCTGTTTCTGAGAGAGG  
AGAACAATATCTCAGGGCTCAATCAAGACATCACAGATGTGTGTTTTTCCCTGAGAAAGACCACAGCTC  
CAAGTCTGCGACCTACAAGTCTATTGGACAGCCAAAACCTCAGCACACATCCCTTCTTTGTCCAAGCC  
CCAGAAAATGAACACTTCCTTGGGGCAGCATCTAACCCGAGGAACCATGGAGGAATTCCTCCGGTGTA  
TATCCGAAATGAATAGGCTGTTTTCTGAAAAGCAGACATAACCAAGCCAGGGTACGATCCCTGCAATCT  
ATTGGTTGACCTGGATGACATCAGAGACCTGTCTTCTGGGTTACGAAATACCGAGACTTCATCCGTTAC  
CTGCCATCCACCTCTCCAAGTACATTAAGAATGCTGGATAGACACACCCTGAACAAGTGCAGCTCTG  
TGAGCCAGCACTGGGCCGCCATGGCTCAACAGGTCAAGATGGACTTGTGACGCGCACGGCTTCATTAGAA  
CCAGATTACCTTCTTGCAGGGTCTATAACAAGAGGAATTGATCCTAATTATGCCAATAAGGTTTCTATC  
CCAGTTCTAAAATGGTAGATGACGGGAAGAGCATGCGTGTGAAACATCCGAAGTGAAGTTGAGAACGA  
AGAATGAGTACAACCTGTGGACTGCATACCAGAACGAGGAAACGCAGCAGTCTGATGGAGGAGAGAAA  
TGTTTTCTGTGGGACCTACAATGTTTCGACTTCTCTGACACGTGGGATCAAAACCGAGTCATCCACTAT  
TCCGGGGGAGATCTGATAGTGTGTCATCTAATCGAAAGATCCATCTTCTGGACATCATACAAGTAAAAG  
CGATACCCGTTGAATTCGAGGCCATGCTGGGAGTGTCCGGGCCCTTCTCTGTGTGAGGAGGAAAACCT  
TCTCCTAAGCGGGAGCTATGACCTAAGTATCAGATACTGGGATCTGAAAAGTGGGGTTTGCACACGAATC  
TTCGGTGGTACCAGGGGACTATCACTTGCATGGACTTGTGTAAGAACAGGCTCGTATCTGGAGGAAGAG  
ATTGCCAGGTAAGATGAGGATGTAGACACAGGGAAGTGCCTGAAGACGTTTAGACACAAGACCCCAT  
CTTGGCCACCAGGATCAATGATACCTACATTGTGAGCAGCTGTGAGCGAGGGCTGGTAAAAGTGTGGCAC  
ATTGCCATGGCCAGTTGGTAAAGACTCTCAGTGGCCACGAGGGAGCTGTGAAATGCCTGTTCTTTGACC  
AGTGGCATCTCCTCTCAGGAAGCACTGATGGCCTGGTCAATGGCCTGGAGCATGGTGGGGAAGTACGAGCC  
CTGCCTGATGGCCTCAAGCATCCCAAAGAGGTGCTCGACGTGTCCCTTCTTCTCCTCCGGGTATCAGC  
GCCTGTGCAGATGGCAAGATCCGAATTTACAATTTCTTCAATGGGAACTGTATGAAGGTGATAAAAGCCA  
ATGGCAGAGGGCATCCTGTGCTGCTTCTTTATTTCAGGGCAACAGTGTACCTTACGGAAGACCTATCT  
GCCAGTTGAGTGAAGACAGATGGAAGGAGGGTTAGGAAGAAGGCAGAGAAGTCAAGTGGGATGTGCTGT  
AATAACCCACGCAAAACCGATGATGGGCTGAAGCTAAAGCAC

AG**CGGACCG**ACGCGTACGCGGCCGCTCGAGCAGAACTCATCTCAGAAGAGGATCTGGCAGCAAATGATATCC  
TGGATTACAAGGATGACGACGATAAGGTTTAA

**Protein Sequence:** >RC239391 representing NM\_001282540  
 Red=Cloning site Green=Tags(s)

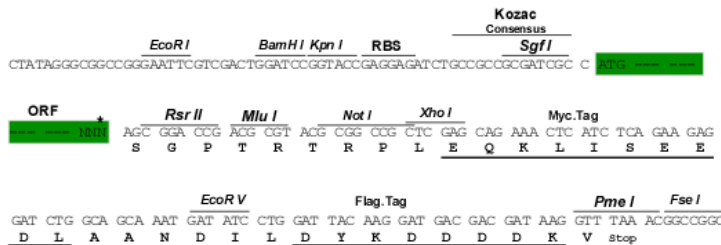
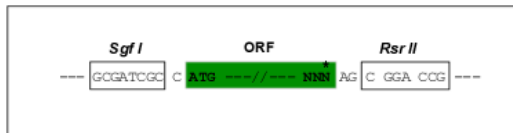
MENLESRLKNAPYFRCEKGTDSIPLCRKCETRVLAWKIFSTKEWFCRINDISQRRFLVGILKQLNSLYLL  
 HYFQNILQTTQKDFIYNRSRIDLSKKEGKVVKSSLNQLDKTVEQKMEILYWFANSTQWKANYTLLL  
 LQMCNPKLLLLTAANVIRVLFLEENNI SGLNQDITDVCFSPEKDHSSKSATSQVYWTAKTQHTSLPLSKA  
 PENEHFLGAASNPEEPWRNSLRICISEMNR LFSGKADITKPGYDPCNLLVDLDDIRDLSGGFSKYRDFIRY  
 LPIHLSKYILRMLDRHTLNKCAVSQHWAAAMAQQVKMDLSAHGFIQNQITFLQGSYTRGIDPNYANKVSI  
 PVPKMVDDGKSMRVKHPKWLRTKNEYNLWTAYQNEETQQVLMEEERNVFCGTYNVRILSDTDWQNRVIHY  
 SGGDLIAVSSNRKIHLLDIIQVKAIPVEFRGHAGSVRALFLCEEENFLLSGSYDLSIRYWLKSGVCTRI  
 FGGHQGTITCMDLCKNRLVSGGRDCQVKVVDVDTGKCLKTFRHKDPILATRINDTYIVSSCERGLVKVWH  
 IAMAQLVKTL SGHEGAVKCLFFDQWHL LSGSTDGLVMAWSMVGKYERCLMAFKHPKEVLDSLLFLRVIS  
 ACADGKIRIYNFFNGNCKMVIKANGRGPVLSFFIQGNSDHLRKYLPVEWKTGRRVRKKAESAGMCC  
 NNPRKTDGGLK LKH

SGPTRRPLEQKLI SEEDLAANDILDYKDDDDKV

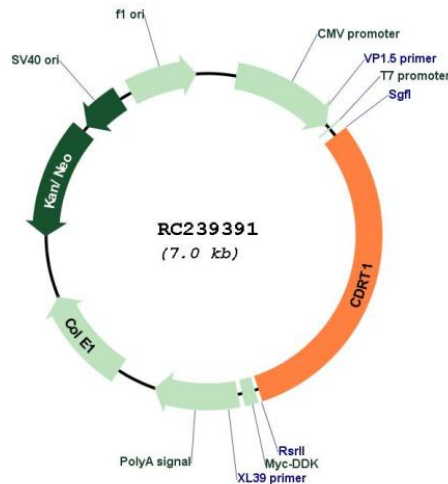
**Restriction Sites:** SgfI-RsrII

**Cloning Scheme:**

Cloning sites used for ORF Shuttling:



\* The last codon before the Stop codon of the ORF

**Plasmid Map:**


**ACCN:** NM\_001282540

**ORF Size:** 2142 bp

**OTI Disclaimer:** The molecular sequence of this clone aligns with the gene accession number as a point of reference only. However, individual transcript sequences of the same gene can differ through naturally occurring variations (e.g. polymorphisms), each with its own valid existence. This clone is substantially in agreement with the reference, but a complete review of all prevailing variants is recommended prior to use. [More info](#)

**OTI Annotation:** This clone was engineered to express the complete ORF with an expression tag. Expression varies depending on the nature of the gene.

**Components:** The ORF clone is ion-exchange column purified and shipped in a 2D barcoded Matrix tube containing 10ug of transfection-ready, dried plasmid DNA (reconstitute with 100 ul of water).

**Reconstitution Method:**

1. Centrifuge at 5,000xg for 5min.
2. Carefully open the tube and add 100ul of sterile water to dissolve the DNA.
3. Close the tube and incubate for 10 minutes at room temperature.
4. Briefly vortex the tube and then do a quick spin (less than 5000xg) to concentrate the liquid at the bottom.
5. Store the suspended plasmid at -20°C. The DNA is stable for at least one year from date of shipping when stored at -20°C.

**RefSeq:** [NM\\_001282540.1](#), [NP\\_001269469.1](#)

**RefSeq Size:** 3215 bp

**RefSeq ORF:** 2145 bp

Locus ID: 374286

Cytogenetics: 17p12

MW: 82.5 kDa

**Gene Summary:** Members of the F-box protein family, such as FBXW10, are characterized by an approximately 40-amino acid F-box motif. SCF complexes, formed by SKP1 (MIM 601434), cullin (see CUL1; MIM 603034), and F-box proteins, act as protein-ubiquitin ligases. F-box proteins interact with SKP1 through the F box, and they interact with ubiquitination targets through other protein interaction domains (Jin et al., 2004 [PubMed 15520277]).[supplied by OMIM, Mar 2008]