

Product datasheet for **RC239379**

MUC20 (NM_001282506) Human Tagged ORF Clone

Product data:

Product Type:	Expression Plasmids
Product Name:	MUC20 (NM_001282506) Human Tagged ORF Clone
Tag:	Myc-DDK
Symbol:	MUC20
Synonyms:	MUC-20
Vector:	pCMV6-Entry (PS100001)
E. coli Selection:	Kanamycin (25 ug/mL)
Cell Selection:	Neomycin



[View online »](#)

ORF Nucleotide
Sequence:

>RC239379 representing NM_001282506
Red=Cloning site Blue=ORF Green=Tags(s)

TTTTGTAATACGACTCACTATAGGGCGGCCGGAATTCGTCGACTGGATCCGGTACCGAGGAGATCTGCC
GCC**CGCATCGCC**

ATGGGCTGTCTCTGGGGTCTGGCTCTGCCCTTTTCTTCTCTGCTGGGAGTTGGGGTCTCTGGGAGCT
CTGCAGGCCCCAGCACCCGCAGAGCAGACTGCGATGACAACGGACGACACAGAAGTGCCCGCTATGAC
TCTAGCACCGGGCCACGCCGCTCTGAAACTCAAACGCTGAGCGCTGAGACCTCTTCTAGGGCTCAACC
CCAGCCGGCCCCATTCCAGAAGCAGAGACCAGGGGAGCCAAGAGAATTTCCCTGCAAGAGAGACCAGGA
GTTTCACAAAAACATCTCCAACCTCATGGTGCTGATCGCCACCTCCGTGGAGACATCAGCCGCCAGTG
CAGCCCCGAGGGAGCTGGAATGACCACAGTTAGACCATCACAGGCAGTGATCCAGGGAAGCCATCTTT
GACACCTTTGCACCGATGACAGCTCTGAAGAGGCAAAGACTCACAATGGACATATTGACATTGGCTC
ACACCTCCACAGAAGCTAAGGGCTGTCTCAGAGAGCAGCGCTCTTCCGACAGCCCCATCCAGTCAT
CACCCCGTCACGGCCTCAGAGAGCAGCGCTCTTCCGACGGCCCCATCCAGTCATCACCCCGTCACGG
GCCTCAGAGAGCAGCGCTCTTCCGACGGCCCCATCCAGTCATCACCCCGTCACGGGCCTCAGAGAGCA
GCGCTCTTCCGACGGCCCCATCCAGTCATCACCCCGTCACGGGCCTCAGAGAGCAGCGCTCTTCCGA
CGGCCCCATCCAGTCATCACCCCGTCACGGGCCTCAGAGAGCAGCGCTCTTCCGACGGCCCCATCCA
GTCATCACCCCGTCACGGGCCTCAGAGAGCAGCGCTCTTCCGACGGCCCCATCCAGTCATCACCCCGT
CACGGGCCTCAGAGAGCAGCGCTCTTCCGACGGCCCCATCCAGTCATCACCCCGTCACGGGCCTCAGA
GAGCAGCGCTCTTCCGACGGCCCCATCCAGTCATCACCCCGTCACGGGCCTCAGAGAGCAGCGCTCT
TCCGACGGCCCTCCATCCAGTCATCACCCCGTCACGGGCCTCAGAGAGCAGCGCTCTTCCGACGGCCCC
ATCCAGTCATCACCCCGTCACGGGCCTCAGAGAGCAGCGCTCTTCCGACGGCCCCATCCAGTCATCAC
CCCTCATGGTCCCCGGATCTGACGCTACTCTCCTCGCTGAAGCCCTGGTGACTGTACAAACATCGAG
GTTATTAATTGCAGCATCACAGAAATAGAAACAACGACTTCCAGCATCCCTGGGGCTCAGACACAGATC
TCATCCCCACGGAAGGGGTGAAGGCCTCGTCCACCTCCGATCCACCAGCTCTGCCTGACTCCACTGAAGC
AAAACCACACATCACTGAGGTACAGCCTCTGCCGAGACCCTGTCCACAGCCGGCACCACAGAGTCAGCT
GCACCTGATGCCACGGTTGGGACCCCACTCCCACTAACAGCGCCACAGAAAGAGAAGTGACAGCACCCG
GGGCCACGACCTCAGTGGAGCTCTGGTCACAGTTAGCAGGAATCCCCTTGAAGAACTCAGCCCTCTC
TGTTGAGACACCAAGTTACGTCAAAGTCTCAGGAGCAGCTCCGGTCTCCATAGAGGCTGGGTGAGCAGTG
GGCAAAACAACCTCCTTTGCTGGGAGCTCTGCTTCTCCTACAGCCCTCGGAAGCCGCCCTCAAGAACT
TCACCCCTTCCAGAGACACCGACCATGGACATCGCAACCAAGGGGCCCTTCCCACCAGCAGGGACCTCT
TCCTTCTGTCCCTCCGACTACAACCAACAGCAGCCGAGGGACGAACAGCACCTTAGCCAAGATCACAAAC
TCAGCGAAGACCAGATGAAGCCCCAACAGCCACGCCACGACTGCCGGACGAGGCGGACCACAGAGCG
TGAGTGACAGGTGAAAATGGAGGTTTCTCCTCCTGCGGCTGAGTGTGGCTTCCCCGGAAGACCTCACTGA
CCCCAGAGTGGCAGAAAGGCTGATGCAGCAGCTCCACGGGAACCTCACGCCACGCGCCTCACTTCCAG
GTCTCCTTACTGCGTGTGAGGAGGC

ACGCGTACGCGGCCGCTCGAGCAGAAACTCATCTCAGAAGAGGATCTGGCAGCAAATGATATCCTGGATT
ACAAGGATGACGACGATAAGGTTTAA

Protein Sequence: >RC239379 representing NM_001282506
 Red=Cloning site Green=Tags(s)

MGCLWGLALPLFFFCWEVGVSGSSAGPSTRRADTAMTTDDTEVPAMTLAPGHALETQTL SAETSSRAST
 PAGPIPEAETRGAKRISPARETRSF TKTSPNFMVLIATSVETSAASGSPEGAGMTTVQITGSDPREAIF
 DTLCTDSSSEEAKL TMDILTLAHTSTEAKGLSSESSASSDSPHPVITPSRASESSASSDGPHPVITPSR
 ASESSASSDGPHPVITPSRASESSASSDGPHPVITPSRASESSASSDGPHPVITPSRASESSASSDGPH
 VITPSRASESSASSDGPHPVITPSRASESSASSDGPHPVITPSRASESSASSDGPHPVITPSRASESSAS
 SDGLHPVITPSRASESSASSDGPHPVITPSRASESSASSDGPHPVITPSWSPGSDVTL LAEALVTVTNIE
 VINCSITEIETTSSIPGASD TDLIPTEGVKASSTSDPPALPDSTEAKPHITEV TASAETLSTAGTTESA
 APDATVGTPLPTNSATEREVTAPGATL SGALVTVSRNPLEETSALSVETPSYVKVSGAAPVSI EAGSAV
 GKTTSFAGSSASSYSPSEAALKNF T PSETPTMDIATKGPFP T SRDPLSPVPPTTTN SSRGTNSTLAKITT
 SAKTTMKPPTATPTTARTRPTT DVSAGENG GFL LRLSVASPEDL T DPRVAERLMQQLHRELH AHAPHFQ
 VSLLRVRRG

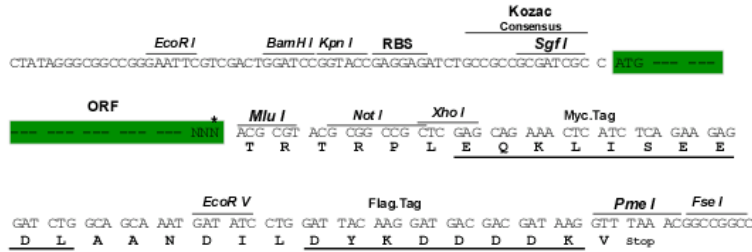
TRTRPLEQKLI SEEDLAANDILDYKDDDDKV

Restriction Sites:

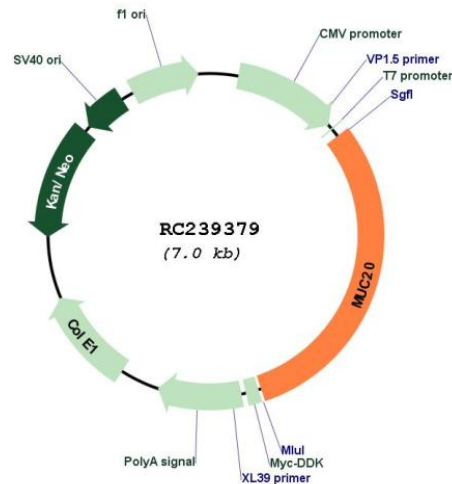
Sgfl-MluI

Cloning Scheme:

Cloning sites used for ORF Shuttling:



* The last codon before the Stop codon of the ORF

Plasmid Map:


ACCN: NM_001282506

ORF Size: 2127 bp

OTI Disclaimer: The molecular sequence of this clone aligns with the gene accession number as a point of reference only. However, individual transcript sequences of the same gene can differ through naturally occurring variations (e.g. polymorphisms), each with its own valid existence. This clone is substantially in agreement with the reference, but a complete review of all prevailing variants is recommended prior to use. [More info](#)

OTI Annotation: This clone was engineered to express the complete ORF with an expression tag. Expression varies depending on the nature of the gene.

Components: The ORF clone is ion-exchange column purified and shipped in a 2D barcoded Matrix tube containing 10ug of transfection-ready, dried plasmid DNA (reconstitute with 100 ul of water).

Reconstitution Method:

1. Centrifuge at 5,000xg for 5min.
2. Carefully open the tube and add 100ul of sterile water to dissolve the DNA.
3. Close the tube and incubate for 10 minutes at room temperature.
4. Briefly vortex the tube and then do a quick spin (less than 5000xg) to concentrate the liquid at the bottom.
5. Store the suspended plasmid at -20°C. The DNA is stable for at least one year from date of shipping when stored at -20°C.

RefSeq: [NM_001282506.2](#)

RefSeq Size: 2611 bp

RefSeq ORF: 2130 bp

Locus ID: 200958

UniProt ID: [Q8N307](#)

Cytogenetics: 3q29

MW: 72.4 kDa

Gene Summary: This gene encodes a member of the mucin protein family. Mucins are high molecular weight glycoproteins secreted by many epithelial tissues to form an insoluble mucous barrier. The C-terminus of this family member associates with the multifunctional docking site of the MET proto-oncogene and suppresses activation of some downstream MET signaling cascades. The protein features a mucin tandem repeat domain that varies between two and six copies in most individuals. Multiple variants encoding different isoforms have been found for this gene. A related pseudogene, which is also located on chromosome 3, has been identified. [provided by RefSeq, Apr 2014]