

Product datasheet for **RC239296**

PCDH1 (NM_001278615) Human Tagged ORF Clone

Product data:

Product Type:	Expression Plasmids
Product Name:	PCDH1 (NM_001278615) Human Tagged ORF Clone
Tag:	Myc-DDK
Symbol:	PCDH1
Synonyms:	PC42; PCDH42
Vector:	pCMV6-Entry (PS100001)
E. coli Selection:	Kanamycin (25 ug/mL)
Cell Selection:	Neomycin



[View online »](#)

ORF Nucleotide
Sequence:

>RC239296 representing NM_001278615
Red=Cloning site Blue=ORF Green=Tags(s)

TTTTGTAATACGACTCACTATAGGGCGGCCGGAATTCGTCGACTGGATCCGGTACCGAGGAGATCTGCC
GCCGCGATCGCC

ATGAATGACAATGCCCCACCATTGAGATCCGGGCATAGGGCTAGTGACTCATCAAGATGGGATGGCTA
ACATCTCAGAGGATGTGGCAGAGGAGACAGCTGTGGCCCTGGTGCAGGTGTCTGACCGAGATGAGGGAGA
GAATGCAGCTGTCACTGTGTGGTGGCAGGTGATGTGCCCTTCCAGCTGCGCCAGGCCAGTGAGACAGGC
AGTGACAGCAAGAAGAAGTATTTCTGCAGACTACCACCCGCTAGACTACGAGAAGGTCAAAGACTACA
CCATTGAGATTGTGGCTGTGGACTCTGGCAACCCCTCTCCAGCACTAACTCCCTCAAGGTGCAGGT
GGTGGACGTCAATGACAACGCACCTGTCTTCACTCAGAGTGTCACTGAGGTGCGCTTCCCGAAAACAAC
AAGCCTGGTGAAGTATTGCTGAGATCACTGCCAGTGTGCTGACTCTGGCTCTAATGCTGAGCTGGTTT
ACTCTCTGGAGCCTGAGCCGGCTGCTAAGGGCCTTCCACCATCTCACCCGAGACTGGAGAGATCCAGGT
GAAGACATCTCTGGATCGGGAACAGCGGGAGAGCTATGAGTTGAAGGTGGTGGCAGCTGACCGGGCAGT
CCTAGCCTCCAGGCCACAGCCACTGTCTTGTCAATGTGCTGGACTGCAATGACAATGACCCCAATTTA
TGCTGAGTGGCTACAACCTCTCAGTGATGGAGAACATGCCAGCACTGAGTCCAGTGGGCATGGTACTGT
CATTGATGGAGACAAGGGGGAGAATGCCAGGTGCAGCTCTCAGTGGAGCAGGACAACGGTACTTTGTT
ATCCAGAATGGCAGGCACCATCTATCCAGCCTGAGCTTTGATCGAGAGCAACAAGCACCTACACCT
TCCAGCTGAAGGCAGTGGATGGTGGCGTCCCACCTCGCTCAGCTTACGTTGGTGTACCATTCAATGTGCT
GGACGAGAATGACAACGCACCCATATCACTGCCCTTCTAACACCTCTACAAGCTGTGACCCCCAG
ACACGTCTTGGTGAAGCAGGTGAGCCAGGTGGCAGCCGAGGACTTGGACTCTGGTGTCAATGCTGAGCTGA
TCTACAGCATTGCAGGTGGCAACCCCTTATGGACTCTTCCAGATTGGGTACATTGAGTCCACCTCACCC
GGAGAAGGAGATTGAGCGCGCCACCATGGGCTACACCGCCTGGTGGTGAAGGTCAAGTACCGCGGCAAG
CCCCACGCTATGGCACAGCCTTGGTCCATCTTTATGCAATGAGACTCTGGCCAACCGCACGCTGCTGG
AGACCCTCTGGGCCACAGCCTGGACACGCGCTGGATATTGACATTGCTGGGGATCCAGAATATGAGCG
CTCCAAGCAGCGTGGCAACATTCTTTGGTGTGGTGGCTGGTGTGGTGGCCGTGGCCTTGTCTATCGCC
CTGGCGGTTCTTGTGCGCTACTGCAGACAGCGGGAGGCCAAAAGTGGTTACCAGGCTGGTAAAGAGGAGA
CCAAGGACCTGTATGCCCAAGCCAGTGGCAAGGCCTCAAGGGAAACAAAAGCAAAGGCAAGAAGAG
CAAGTCCCAAGCCCGTGAAGCCAGTGGAGGACGAGGATGAGGCCGGGCTGCAGAAGTCCCTCAAGTTC
AACCTGATGAGCGATGCCCTGGGGACAGTCCCCGCATCCACCTGCCCTCAACTACCCACCAGGCAGCC
CTGACCTGGGCCGCCACTATCGCTCAACTCCCCACTGCCTTCCATCCAGCTGCAGCCCCAGTACCCCTC
AGCCTCCAAGAAGCACCAGGTGGTACAGGACCTGCCACCTGCAAAACACATTTCGTGGGCACCGGGGACACC
ACGTCCACGGGCTCTGAGCAGTACTCCGACTACAGCTACCGCACCAACCCCCCAATACCCAGCAAGC
AGGTAGGCCAGCCCTTTCAGCTCAGCACACCCAGCCCTACCCACCCCTACCACGGAGCCATCTGGAC
CGAGGTGTGGGAG

ACGCGTACGCGGCCGCTCGAGCAGAACTCATCTCAGAAGAGGATCTGGCAGCAATGATATCCTGGATT
ACAAGGATGACGACGATAAGGTTTAA

Protein Sequence: >RC239296 representing NM_001278615
 Red=Cloning site Green=Tags(s)

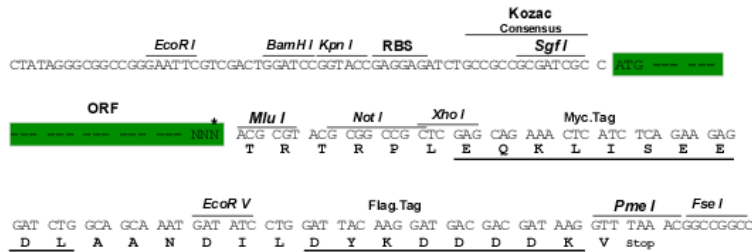
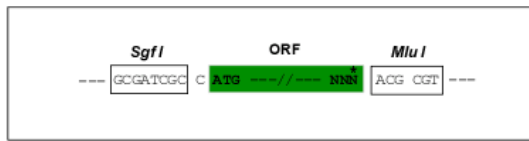
MNDNAPTIEIRGIGLVTHQDGMANISEDVAEETAVALVQVSDRDEGENAAVTCVAGDVFPFQLRQASETG
 SDSKKKYFLQTTTPLDYEKVKDYTIEIVAVDSGNPPLSSTNSLKVQVVDVNDNAPVFTQSVTEVAFENN
 KPGEVIAEITASDADSGSNAELVYSLEPEPAAKGLFTISPETGEIQVKTSLDREQRESYELKVVAADRGS
 PSLQGTATVLVNVLDCNDNDPKFMLSGYNFVSMENMPALSPVGMVTVIDGDKGENAQVQLSVEQDNGDFV
 IQNGTGTILSSLDFDREQQSTYTFQLKAVDGGVPPRSAYVGVTVINVLDENNDNAPYITAPSNTSHKLLTPQ
 TRLGETVSQVAAEDFDSGVNAELIYSIAGGNPYGLFQIGSHSGAITLEKEIERRHHGLHRLVVKVSDRGRK
 PPRYGTALVHLYVNETLANRTLLETLLGHSLDTPLDIDIAGDPEYERSKQRGNILFGVVAGVAVALLIA
 LAVLVRYCRQREAKSGYQAGKKEKDL YAPKPSGKASKGNKSKGKSKSPKPKVPEDEDEAGLQKSLKF
 NLMSDAPGDSPRIHLPLNYPPGSPDLGRHYRSNSPLPSIQLQPQSPSASKKHQVVQDLPANTFVGTGDT
 TSTGSEQSYDYSYRTNPPKYPKQVGPQFQLSTPQPLPHPYHGAIWTEVWE

TRTRPLEQKLISEEDLAANDILDYKDDDDKV

Restriction Sites:
 Cloning Scheme:

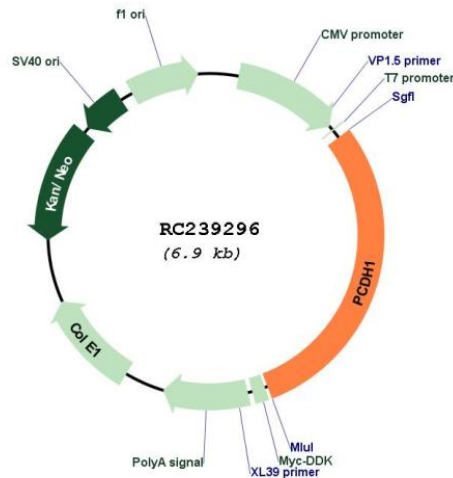
Sgfl-MluI

Cloning sites used for ORF Shuttling:



* The last codon before the Stop codon of the ORF

Plasmid Map:



ACCN: NM_001278615

ORF Size: 2043 bp

OTI Disclaimer: The molecular sequence of this clone aligns with the gene accession number as a point of reference only. However, individual transcript sequences of the same gene can differ through naturally occurring variations (e.g. polymorphisms), each with its own valid existence. This clone is substantially in agreement with the reference, but a complete review of all prevailing variants is recommended prior to use. [More info](#)

OTI Annotation: This clone was engineered to express the complete ORF with an expression tag. Expression varies depending on the nature of the gene.

Components: The ORF clone is ion-exchange column purified and shipped in a 2D barcoded Matrix tube containing 10ug of transfection-ready, dried plasmid DNA (reconstitute with 100 ul of water).

Reconstitution Method:

1. Centrifuge at 5,000xg for 5min.
2. Carefully open the tube and add 100ul of sterile water to dissolve the DNA.
3. Close the tube and incubate for 10 minutes at room temperature.
4. Briefly vortex the tube and then do a quick spin (less than 5000xg) to concentrate the liquid at the bottom.
5. Store the suspended plasmid at -20°C. The DNA is stable for at least one year from date of shipping when stored at -20°C.

RefSeq: [NM_001278615.1](#), [NP_001265544.1](#)

RefSeq Size: 2925 bp

RefSeq ORF: 2046 bp

Locus ID: 5097

UniProt ID: [Q08174](#)

Cytogenetics: 5q31.3

Protein Families: Transcription Factors, Transmembrane

MW: 74 kDa

Gene Summary: This gene belongs to the protocadherin subfamily within the cadherin superfamily. The encoded protein is a membrane protein found at cell-cell boundaries. It is involved in neural cell adhesion, suggesting a possible role in neuronal development. The protein includes an extracellular region, containing 7 cadherin-like domains, a transmembrane region and a C-terminal cytoplasmic region. Cells expressing the protein showed cell aggregation activity. Alternative splicing occurs in this gene. [provided by RefSeq, Jul 2008]