

## Product datasheet for **RC239283**

### **FIGNL1 (NM\_001287492) Human Tagged ORF Clone**

#### **Product data:**

Product Type:	Expression Plasmids
Product Name:	FIGNL1 (NM_001287492) Human Tagged ORF Clone
Tag:	Myc-DDK
Symbol:	FIGNL1
Mammalian Cell Selection:	Neomycin
Vector:	pCMV6-Entry (PS100001)
E. coli Selection:	Kanamycin (25 ug/mL)



[View online »](#)

ORF Nucleotide  
Sequence:

>RC239283 ORF sequence  
Red=Cloning site Blue=ORF Green=Tags(s)

TTTTGTAATACGACTCACTATAGGGCGGCCGGAATTCGTGACTGGATCCGGTACCGAGGAGATCTGCC  
GCCGCGATCGCC

ATGCAGACCTCCAGCTCTAGATCTGTGCACCTGAGTGAATGGCAGAAGAATTACTTCGCAATTACATCTG  
GCATATGTACCGACCGAAGGCAGATGCATACCGTGCACAGATATTACGCATTCAGTATGCATGGGCAAA  
CTCTGAGATTTCCAGGTCTGTGCTACCAAAGTTCAAAAAATATGCAGAGAAATATTCTGCAATTATT  
GATTCTGACAATGTTGAATCTGGGTTGAATAATTATGCAGAAAACATTTAACTTTGGCAGGATCTCAAC  
AAACAGATAGTGACAAGTGGCAGTCTGGATTGTCAATAAATAATGTTTTCAAAATGAGTAGTGTACAGAA  
GATGATGCAAGCTGGCAAAAAATCAAAGACTCTCTGTTGGAACCTGCTCTTGCATCAGTGGTAATCCAT  
AAGGAGGCCACTGTCTTTGATCTTCTAAATTTAGTGTGTTGGTAGTTCTCAAGAGAGTGACTCATTAC  
CTAACTCAGCTCATGATCGAGACCGGACCAAGACTTCCCGGAGAGCAATCGTTTGAACTCCTTCAGAA  
TGCCAGCCACCTATGGTGACTAACACTGCTAGGACTTGCCTACATTCTCAGCACCTGTAGGTGAGTCA  
GCTACTGCAAAATTCATGTACACCATTGTTTGGAAATGTCAAAAAGGAAAATCACAGCTCTGCAAAAG  
AAAACATAGGACTTAATGTGTTCTTATCTAACCAGTCTTGTTTCTGCTGCCTGTGAAAATCCACAGAG  
GAAGTCTTTTTATGGTCTGGCACCATTGATGCACTTTCCAATCCAATACTGAATAAGGCTTGATAGTAA  
ACAGAAGATAATGGCCAAAGGAGGATAGCAGCCTGCCTACATTTAAAAGTCAAAAAGCAAAATATGGG  
TAGATCAGCAAAAAAGTACCACCAACCTCAGCGTGCATCAGGGTCTTCATATGGTGGTGTAAAAAGTC  
TCTAGGAGCTAGTAGATCCCGAGGGATACTTGGAAAGTTGTTCTCCTATACCAAGCAAGATGGGGGA  
GAGCAGAATGGAGGAATGCAATGTAAGCCTTATGGGGCAGGACCTACAGAACCAGCACATCCAGTTGATG  
AGCGTCTGAAGAAGTGGAGCCAAAGATGATTGAACTTATTATGAATGAGATTATGGATCATGGACCTCC  
AGTAAATTGGGAAGATATTGCAGGAGTAGAATTTGCTAAAGCCACCATAAAGGAAATAGTTGTGGGCC  
ATGTTGAGGCCAGACATCTTTACTGGTTTAAAGGGACCCCTAAAGGAATTTTGCTCTTTGGTCTCCTG  
GGACTGGTAAAAGTCTAATTGGCAAGTGCATTGCTAGTCACTGGGGCAACATTCTTTAGCATCTCTGC  
TTCATCTTAACTTCTAATGGGTAGGTGAGGGGAGAAAATGGTCCGTGCATTGTTGCTGTTGCAAGG  
TGTCAGCAACCAGCTGTGATATTTATTGACGAAATGATTCTTGTATCTCAACGGGGAGATGGTGAGC  
ATGAATCTTCTAGAAGGATAAAAAACAGAATTTTAGTTCAATTAGATGGAGCAACAACATCTTCTGAAGA  
TCGTATCCTAGTGGTGGGAGCAACAAATCGGCCACAAGAAATGATGAGGCTGCCCGGAGAAGATTGGTG  
AAAAGGCTTTATATCCCTCCAGAGCTTACGCCAGGAAACAGATAGTAATTAATCTAATGTCCAAG  
AGCAGTGTTCCTCAGTGAAGAAGAAATGAACAGATTGTACAGCAGTCTGATGCGTTTTAGGAGCAGA  
CATGACACAGCTTTCAGGGAGGCTTCTTTGGTCTATTTCGAGTTTACAACTGCTGACATTGCTACC  
ATAACACCGGATCAAGTTCGACCATAGCTTACATTGATTTTGAAGTCTTTTGAAGTGTGCGACCTA  
GTGTTTCTCAAAAAGATTTAGAGCTTTATGAAAAGTGAACAAAAGTCTTTGGTTGTGAAAAG

ACGCGTACGCGGCCGCTCGAGCAGAACTCATCTCAGAAGAGGATCTGGCAGCAATGATATCCTGGATT  
ACAAGGATGACGACGATAAGGTTTAA

**Protein Sequence:** >RC239283 protein sequence  
 Red=Cloning site Green=Tags(s)

```
MQTSSRSVHLSWQKNYFAITSGICTGPKADAYRAQILRIQYAWANSEISQVCATKLFKKYAEKYSII
DSDNVESGLNNAENILTLASQQTSDSKWQSGLSINNFKMSSVQKMMQAGKKFKDSLLEPALASVVIH
KEATVFDLPKFSVCGSSQESDSLNSAHDRDRDRTQDFPESNRLKLLQNAQPPMVTNTARTCPTFSAPVGES
ATAKFHVTPPLFGNVKKNHSSAKENIGLVFLSNQSCFPAACENPQRKSFYSGTIDALSNPILNKACSK
TEDNGPKEDSSLPTFKTAKEQLWVDQKKYHQPQRASGSSYGGVKKSLGASRSRGLGKFVPPIPKQDGG
EQNGGMQCKPYGAGPTEPAHPVDERLKNLEPKMIELIMNEIMDHGPPVNWEDIAAGVEFAKATIKEIVVWP
MLRPDIFTGLRPPKGILLFGPPGTGKTLIGKCIASQSGATFFSISASSLTSKWVGEKEMVRALFAVAR
CQQPAVIFIDEIDSLLSQRGDGEHESSRRIKTEFLVQLDGATTSSDRILVVGATNRPQEIIDEAARRRLV
KRLYIPLPEASARKQIVINLMSKEQCCLSEEEIEQIVQQSDAFSGADMTQLCREASLGPISRSLQTADIAT
ITPDQVRPIAYIDFENAFRTVRPSVSPKDLELYENWNKTFGCGK
```

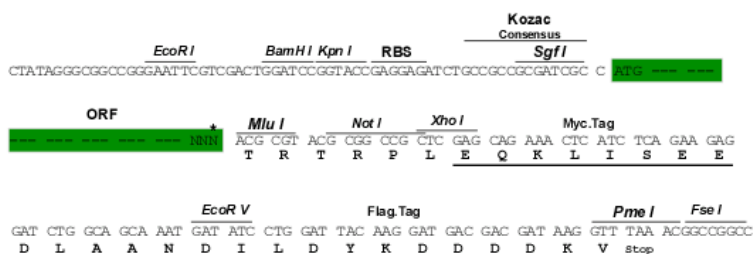
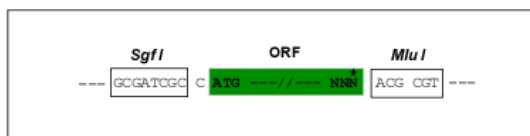
TRTRPLEQKLISEEDLAANDILDYKDDDDKV

**Chromatograms:** [https://cdn.origene.com/chromatograms/mk6362\\_d09.zip](https://cdn.origene.com/chromatograms/mk6362_d09.zip)

**Restriction Sites:** SgfI-MluI

**Cloning Scheme:**

Cloning sites used for ORF Shuttling:



\* The last codon before the Stop codon of the ORF

**ACCN:** NM\_001287492

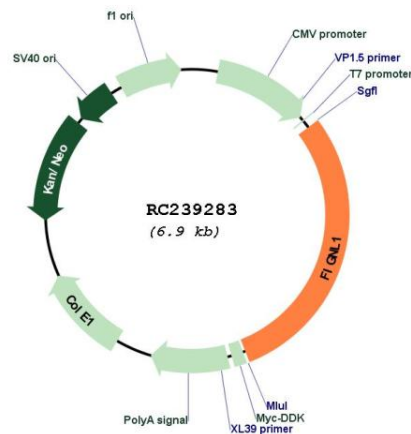
**ORF Size:** 2022 bp

**OTI Disclaimer:** The molecular sequence of this clone aligns with the gene accession number as a point of reference only. However, individual transcript sequences of the same gene can differ through naturally occurring variations (e.g. polymorphisms), each with its own valid existence. This clone is substantially in agreement with the reference, but a complete review of all prevailing variants is recommended prior to use. [More info](#)

**OTI Annotation:** This clone was engineered to express the complete ORF with an expression tag. Expression varies depending on the nature of the gene.

<b>Components:</b>	The ORF clone is ion-exchange column purified and shipped in a 2D barcoded Matrix tube containing 10ug of transfection-ready, dried plasmid DNA (reconstitute with 100 ul of water).
<b>Reconstitution Method:</b>	<ol style="list-style-type: none"> <li>1. Centrifuge at 5,000xg for 5min.</li> <li>2. Carefully open the tube and add 100ul of sterile water to dissolve the DNA.</li> <li>3. Close the tube and incubate for 10 minutes at room temperature.</li> <li>4. Briefly vortex the tube and then do a quick spin (less than 5000xg) to concentrate the liquid at the bottom.</li> <li>5. Store the suspended plasmid at -20°C. The DNA is stable for at least one year from date of shipping when stored at -20°C.</li> </ol>
<b>RefSeq:</b>	<u>NM_001287492.3</u>
<b>RefSeq Size:</b>	3992 bp
<b>RefSeq ORF:</b>	2025 bp
<b>Locus ID:</b>	63979
<b>UniProt ID:</b>	<u>Q6PIW4</u>
<b>Cytogenetics:</b>	7p12.2
<b>MW:</b>	74.1 kDa
<b>Gene Summary:</b>	This gene encodes a member of the AAA ATPase family of proteins. The encoded protein is recruited to sites of DNA damage where it plays a role in DNA double-strand break repair via homologous recombination. This protein has also been shown to localize to the centrosome and inhibit ciliogenesis, and may regulate the proliferation and differentiation of osteoblasts. [provided by RefSeq, Oct 2016]

### Product images:



Circular map for RC239283