

## Product datasheet for **RC239270**

### **ZNF180 (NM\_001278508) Human Tagged ORF Clone**

#### **Product data:**

Product Type:	Expression Plasmids
Product Name:	ZNF180 (NM_001278508) Human Tagged ORF Clone
Tag:	Myc-DDK
Symbol:	ZNF180
Synonyms:	HHZ168
Vector:	pCMV6-Entry (PS100001)
E. coli Selection:	Kanamycin (25 ug/mL)
Cell Selection:	Neomycin



[View online »](#)

ORF Nucleotide  
Sequence:

>RC239270 representing NM\_001278508  
Red=Cloning site Blue=ORF Green=Tags(s)

TTTTGTAATACGACTCACTATAGGGCGGCCGGAATTCGTCGACTGGATCCGGTACCGAGGAGATCTGCC  
GCCGCGATCGCC

ATGCGCGCATGCGCAGGGTCTACGCGGGAAGCTGGAAGCGGTGCTCAGGACCTCAGCACCCCTGCTGTGCC  
TGGAGGAGAGCATGGAAGAGCAGGATGAGAAGCCCCAGAGCCCCGAAGGTCTGTGCACAGGAAGGAGT  
GAACCTTAAAAATTGTGACTGTGGACTTCACACGGGAGGAACAGGGTACTTGCAACCTGCTCAGAGGACC  
CTGGACAGAGATGTGATCCTGGAGAACCACAGGGACCTAGTCTCTTGGGACTTGGCAACTGCAGTTGGAA  
AAAAAGATTCAACTTCAAAGCAGAGGATTTTTGATGAAGAACCAGCTAATGGAGTGAAGATAGAAAGTT  
TACAAGGGATGATCCTTGGTTATCTTCATGTGAAGAAGTGGATGATTGTAAGACCAGTTGGAGAAGCAA  
CAGGAAAAACAAGAGATACTTTGCAGGAAGTGGCATTCACTCAAAGGAAAGCAGTTATTCATGAGAGAG  
TCTGCAAAAGTGTGAACTGGGAGAAGAGTGGTCTGAATTCAGTCTATTTTCATCCCCAGTTATACC  
CATAAGAAACCATTTTCATAAACATGTATCACATGCTAAAAAATGGCATCTTAATGCTGCTGTAACAGT  
CATCAGAAGATTAATGAGAATGAGACACTATATGAAAATGAATGTGGAACCCCTCAGAGCATTC  
ACCTTATTCAGTTTACAAGAACTCAAACAAAAGATAAATCCTATGGATTTAGTGACCGTATTCAATCTTT  
TTGCCATGGTACACCCCTACATATACATGAAAAATTCATGGAGGAGGAAAAACCTTTGATTTTAAAGAA  
TGTGGGACAGGTTTTGAACCCCAAATAATCCATAATGAACAACAGAGAATTCCTTTTGAAGAGAGTCAAT  
ATAAATGTAGTGAACCTCTCATAGTTCCTCCCTTACTCAAACATGAGAAAATTTCTGAAGAGAAAACC  
TTTTGAATGTAATCAGTGTGGGAAATCCTTCAGCTGGAGCTCGCATCTTGTTCACATCAGAGAACTCAC  
ACAGGGGAGAAAACCTTATGAATGTAGTGAATGTGGAATCCTTCAGCCGGAGCTCGCACCTTGTTC  
ATCAGAGAACTCATACTGGAGAGAAAACCTTACAGGTGTAATCAATGTGGGAAATCCTTTAGCCAGAGTTA  
TGTCTTGTGTGCATCAAAGAACTCATACTGGGAGAAGCCTTATGAATGCAATCAGTGTGGAAGTCA  
TTCAGGCAGAGCTATAAATTATTGCACATCAAAGAACACATACCGGAGAGAAAGCCCTATGAATGTAATC  
AATGTGGGAAATCATTTATCCAGAGCTATAAATTATTGCACATCAAAGAATTCATACTGGGAAAAAC  
CTATGAATGCAATCAGTGTGGGAAATCCTTAGTCAAAGTTATAAATTGTTGCTCATCAGAGAACTCAC  
ACAGGAGAAAAACCTTTGAATGTAATCAGTGTGGGAAATCCTTCAGCTGGAGCTCAGCTTGTTCAC  
ATCAAAGAACTCACACTGGAGAGAAACCGTATGAATGTAGTGAATGTGGAATCCTTTAACCGCAGTTC  
TCACCTTGTATGCATCAGAGAATTCACACTGGGAAAAACCGTATGAATGTAATCAGTGTGGGAAATCC  
TTCAGCCAGAGTTATGTTCTTGTGTACATCAGAGAACTCATACTGGAGAAAAGCCCTATGAATGCAGTC  
AATGTGGGAAAGTCTTCAGACAGAGTTCATGCCTTACTCAACATCAGAGAACTCATACTGGAGAGAAAC  
ATTTGAATGTAATCAGTGTGAAAAACATTTAGCTTGAGTGTCTGACTTATTGTGCATCAAAGAACTCAT  
ACTGGAGAGAAAACCTTTACATGTATTCAGTGTGGAAGCTTTCATTAATAGCTATAAATTATTAGGC  
ATCAGGCAACTCATACTGAAGAGAACTCTATGAATGTAAC

ACGCGTACGCGGCCGCTCGAGCAGAAACTCATCTCAGAAGAGGATCTGGCAGCAATGATATCCTGGATT  
ACAAGGATGACGACGATAAGGTTTAA

**Protein Sequence:** >RC239270 representing NM\_001278508  
 Red=Cloning site Green=Tags(s)

MRACAGSTREAGSGAQLSTLLCLEESMEEQDEKPPPEPKVCAQEGVNFKIVTVDFTREEQGTCPNAQRT  
 LDRDVILENHRDLVSWDLATAVGKDKSTSKQRIFDEEPANGVKIERFTRDDPWLSCEEVDDCKDQLEKQ  
 QEKQEILLQEVAFTQRKAVIHERVCKSDDETGEKSGLNSSLFSSPVIPIRNHFHKHVSHAKKWHLNAAVNS  
 HQKINENETLYENNECGKPPQSIHLIQFTRTQTKDKSYGFSRIQSFCHGTPHLIHEKIHGGGKTFDFKE  
 CGQVLNPKISHNEQQRIPFEESQYKCSSETSHSSSLTQNMNRNSEEKPFECNCGKFSWSSHLVAHQRT  
 TGEKPYECSECGKFSRSSHLSHQRTHTGKPYRCNQCGKFSQSYVLVHQRTHTGKPYECNQCGKS  
 FRQSYKLIHQRTHTGKPYECNQCGKFSIQSYKLIHQRIHTGKPYECNQCGKFSQSYKLIHQRTHT  
 TGEKPFECNCGKFSWSSQLVAHQRTHTGKPYECSECGKSFNRSSHLVMHQRIHTGKPYECNQCGKS  
 FSQSYVLVHQRTHTGKPYECNQCGKFSRQSSCLTQHQRHTHTGKPFECNCGKTFSLSARLIVHQRT  
 TGEKPFQICQCGKAFINSYKLIRHQATHTEEKLYECN

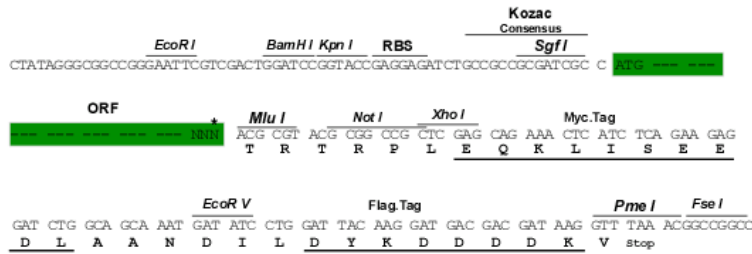
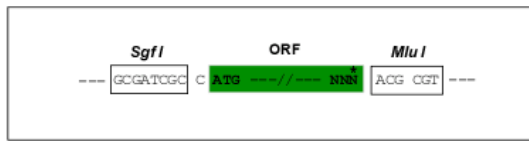
TRTRPLEQKLISEEDLAANDILDYKDDDDKV

**Restriction Sites:**

**Cloning Scheme:**

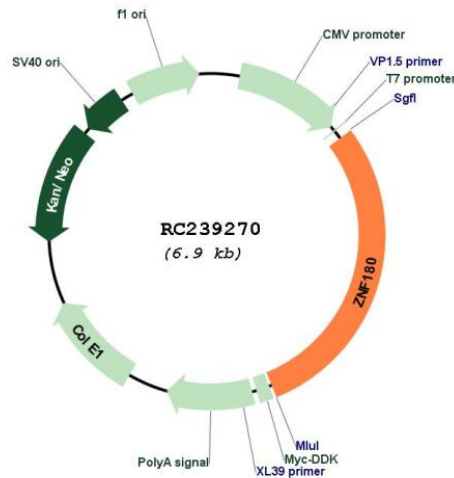
SgfI-MluI

Cloning sites used for ORF Shuttling:



\* The last codon before the Stop codon of the ORF

## Plasmid Map:



ACCN: NM\_001278508

ORF Size: 2001 bp

OTI Disclaimer: The molecular sequence of this clone aligns with the gene accession number as a point of reference only. However, individual transcript sequences of the same gene can differ through naturally occurring variations (e.g. polymorphisms), each with its own valid existence. This clone is substantially in agreement with the reference, but a complete review of all prevailing variants is recommended prior to use. [More info](#)

OTI Annotation: This clone was engineered to express the complete ORF with an expression tag. Expression varies depending on the nature of the gene.

Components: The ORF clone is ion-exchange column purified and shipped in a 2D barcoded Matrix tube containing 10ug of transfection-ready, dried plasmid DNA (reconstitute with 100 ul of water).

Reconstitution Method:

1. Centrifuge at 5,000xg for 5min.
2. Carefully open the tube and add 100ul of sterile water to dissolve the DNA.
3. Close the tube and incubate for 10 minutes at room temperature.
4. Briefly vortex the tube and then do a quick spin (less than 5000xg) to concentrate the liquid at the bottom.
5. Store the suspended plasmid at -20°C. The DNA is stable for at least one year from date of shipping when stored at -20°C.

RefSeq: [NM\\_001278508.3](#)

RefSeq Size: 4261 bp

RefSeq ORF: 2004 bp

Locus ID: 7733

UniProt ID: [Q9UJW8](#)

Cytogenetics: 19q13.31

Protein Families: Transcription Factors

MW: 76.8 kDa

**Gene Summary:** Zinc finger proteins have been shown to interact with nucleic acids and to have diverse functions. The zinc finger domain is a conserved amino acid sequence motif containing 2 specifically positioned cysteines and 2 histidines that are involved in coordinating zinc. Kruppel-related proteins form 1 family of zinc finger proteins. See MIM 604749 for additional information on zinc finger proteins.[supplied by OMIM, Jul 2002]