

Product datasheet for **RC239138**

AXL (NM_001278599) Human Tagged ORF Clone

Product data:

Product Type:	Expression Plasmids
Product Name:	AXL (NM_001278599) Human Tagged ORF Clone
Tag:	Myc-DDK
Symbol:	AXL
Synonyms:	ARK; JTK11; Tyro7; UFO
Vector:	pCMV6-Entry (PS100001)
E. coli Selection:	Kanamycin (25 ug/mL)
Cell Selection:	Neomycin



[View online »](#)

ORF Nucleotide Sequence:

>RC239138 representing NM_001278599
 Red=Cloning site Blue=ORF Green=Tags(s)

TTTTGTAATACGACTCACTATAGGGCGGCCGGAATTCGTCGACTGGATCCGGTACCGAGGAGATCTGCC
 GCC**CGGATCGCC**

ATGGGCATCCAGGCGGGAGAACCAGACCCCCAGAGGAGCCCTCACCTCGCAAGCATCCGTGCCCCCC
 ATCAGTTCGGCTAGGCAGCCTCCATCCTCACACCCTTATCACATCCGGTGGCATGCACCAGCAGCCA
 GGGCCCTCATCTGGACCCACTGGCTTCTGTGGAGACGCCGGAGGAGTGCCCTGGGCCCCCTGAG
 AACATTAGTGCTACGCGGAATGGGAGCCAGGCCTTCGTGCATTGGCAAGAGCCCCGGGCGCCCTGCAGG
 GTACCCTGTTAGGGTACCGGCTGGCGTATCAAGGCCAGGACACCCAGAGGTGCTAATGGACATAGGGCT
 AAGGCAAGAGGTGACCTGGAGCTGCAGGGGACGGGTCTGTGTCCAATCTGACAGTGTGTGTGGCAGCC
 TACTGCTGCTGGGATGGACCCTGGAGCCTCCAGTACCCCTGGAGGCCTGGCGCCAGGGCAAGCAC
 AGCCAGTCCACCAGCTGGTGAAGGAACCTCAACTCCTGCCTTCTCGTGGCCCTGGTGGTATGTACTGCT
 AGGAGCAGTCGTGGCCGCTGCCTGTGTCTCATCTTGGCTCTCTCTTGTCCACCGCGCAAAGAAGGAG
 ACCCGTTATGGAGAAGTGTTTGAACCAACAGTGGAAAGAGGTGAACTGGTAGTCAGGTACCGCGTGC
 AGTCTACAGTCGTCGGACCACTGAAGTACCTTGAACAGCCTGGGCATCAGTGAAGAGCTGAAGGAGAA
 GCTGCGGGATGTGATGGTGGACCGCACAAAGTGGCCCTGGGGAAGACTCTGGGAGAGGAGAGTTTGA
 GCTGTGATGGAAGGCCAGCTCAACCAGGACGACTCCATCCTCAAGGTGGCTGTGAAGACGATGAAGATTG
 CCATCTGCACGAGGTGAGAGCTGGAGGATTTCTGAGTGAAGCGGTCTGCATGAAGGAATTTGACCATCC
 CAACGTCATGAGGCTCATCGGTGTCTGTTCCAGGTTCTGAACGAGAGAGCTTCCCAGCACCTGTGGTC
 ATCTTACCTTTTCAATGAAACATGGAGACCTACACAGCTTCTCTCTATCCCGGCTGGGGACAGCCAG
 TGTACCTGCCACTCAGATGCTAGTGAAGTTCATGGCAGACATGCCAGTGGCATGGAGTATCTGAGTAC
 CAAGAGATTCATACACCGGACCTGGCGCCAGGAAGTGCATGCTGAATGAGAACATGTCCGTGTGTGTG
 GCGGACTTCGGGCTCTCCAAGAAGATCTACAATGGGGACTACTACCGCCAGGGACGTATCGCCAAGATGC
 CAGTCAAGTGGATTGCCATTGAGAGTCTAGCTGACCGTGTCTACACCAGCAAGAGCGATGTGTGGTCTT
 CGGGGTGACAATGTGGGAGATTGCCACAAGAGGCCAAACCCCATATCCGGGCGTGGAGAACAGCGAGATT
 TATGACTATCTGCGCCAGGAAATCGCCTGAAGCAGCCTGCGGACTGTCTGGATGGACTGTATGCCTTGA
 TGTGCGGTGCTGGGAGCTAAATCCCAGGACCGCCAAGTTTTACAGAGCTGCGGGAAGATTTGGAGAA
 CACTGAAGGCCTTGCCTCTGCCAGGAGCCTGACGAAATCCTCTATGTCAACATGGATGAGGGTGA
 GGTATCCTGAACCCCTGGAGCTGCAGGAGGAGCTGACCCCAACCCAGCCAGACCCTAAGGATTCCT
 GTAGCTGCTCACTGCGGCTGAGGTCCATCCTGCTGGACGCTATGCTCTGCCCCTCCACAACCCCTAG
 CCCGCTCAGCCTGCTGATAGGGCTCCCAGCAGCCCCAGGGCAGGAGGATGGTGCC

ACGCGTACGCGGCCGCTCGAGCAGAACTCATCTCAGAAGAGGATCTGGCAGCAAATGATATCCTGGATT
 ACAAGGATGACGACGATAAGGTTTAA

Protein Sequence:

>RC239138 representing NM_001278599
 Red=Cloning site Green=Tags(s)

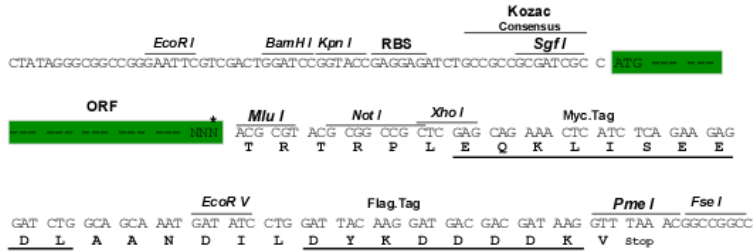
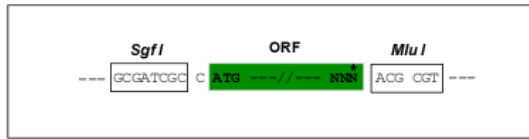
MGIQAGEPDPPEEPLTSQASVPPHQLRLGSLHPHTPHYHIRVACTSSQGPSWTHWLPVETPEGVPLGPPE
 NISATRNGSQAFVHWQEPRAPLQGTLLGYRLAYQGQDTPPEVLMDIGLRQEVTLLELQGDGVSNTLTVCAA
 YTAAGDGPWSLPVPLEAWRPGQAQPVHQLVKEPSTPAFSPWVWYVLLGAVVAAACVLILALFLVHRRKKE
 TRYGEVFEPTVERGELVVRVYRVRKSYSRRTEATLNSLGI SEELKEKLRDVMVDRHKVALGKTLGEGEFG
 AVMEGQLNQDSDILKVAVKTMKIAICTRSELEDFLSEAVCMKEFDHNPVMRLIGVCFQGSERESFPAPVV
 ILPFMKHGDLSFLLYSRLGDQPYYLPTQMLVKFMADIASGMEYLSTKRFIHRDLAARNMMLNENMSVCV
 ADFGLSKKIYNGDYRQGRIAKMPVKWIAIESLADRVYTSKSDVVSFGVTMWEIATRGTTPYPGVENSEI
 YDYLRQGNRLKQPADCLDGLYALMSRCWELNPQDRPSFTELREDLNLTALKALPPAQEPDEILYVNMDEGG
 GYPEPPGAAGGADPPTQDPKDCSCLTAAEVHPAGRYVLCPSSTPSPAQPADRGSAPAAGQEDGA

TRTRPLEQKLISEEDLAANDILDYKDDDDKV

Restriction Sites: SgfI-MluI

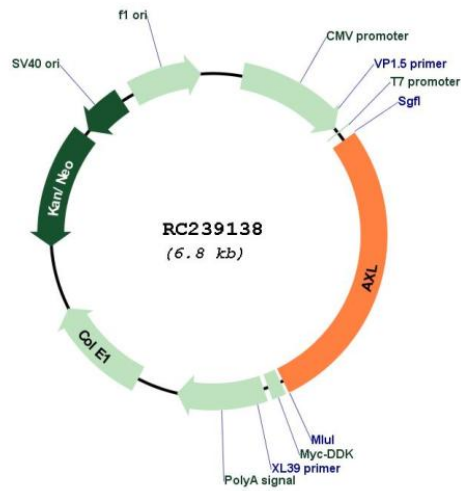
Cloning Scheme:

Cloning sites used for ORF Shutting:



* The last codon before the Stop codon of the ORF

Plasmid Map:



ACCN: NM_001278599

ORF Size: 1878 bp

OTI Disclaimer:	The molecular sequence of this clone aligns with the gene accession number as a point of reference only. However, individual transcript sequences of the same gene can differ through naturally occurring variations (e.g. polymorphisms), each with its own valid existence. This clone is substantially in agreement with the reference, but a complete review of all prevailing variants is recommended prior to use. More info
OTI Annotation:	This clone was engineered to express the complete ORF with an expression tag. Expression varies depending on the nature of the gene.
Components:	The ORF clone is ion-exchange column purified and shipped in a 2D barcoded Matrix tube containing 10ug of transfection-ready, dried plasmid DNA (reconstitute with 100 ul of water).
Reconstitution Method:	<ol style="list-style-type: none">1. Centrifuge at 5,000xg for 5min.2. Carefully open the tube and add 100ul of sterile water to dissolve the DNA.3. Close the tube and incubate for 10 minutes at room temperature.4. Briefly vortex the tube and then do a quick spin (less than 5000xg) to concentrate the liquid at the bottom.5. Store the suspended plasmid at -20°C. The DNA is stable for at least one year from date of shipping when stored at -20°C.
RefSeq:	NM_001278599.1 , NP_001265528.1
RefSeq Size:	4128 bp
RefSeq ORF:	1881 bp
Locus ID:	558
Cytogenetics:	19q13.2
Protein Families:	Druggable Genome, Protein Kinase, Transmembrane
MW:	69.7 kDa
Gene Summary:	The protein encoded by this gene is a member of the Tyro3-Axl-Mer (TAM) receptor tyrosine kinase subfamily. The encoded protein possesses an extracellular domain which is composed of two immunoglobulin-like motifs at the N-terminal, followed by two fibronectin type-III motifs. It transduces signals from the extracellular matrix into the cytoplasm by binding to the vitamin K-dependent protein growth arrest-specific 6 (Gas6). This gene may be involved in several cellular functions including growth, migration, aggregation and anti-inflammation in multiple cell types. Alternative splicing results in multiple transcript variants of this gene. [provided by RefSeq, Jul 2013]