

Product datasheet for **RC239095**

LINGO1 (NM_001301187) Human Tagged ORF Clone

Product data:

Product Type:	Expression Plasmids
Product Name:	LINGO1 (NM_001301187) Human Tagged ORF Clone
Tag:	Myc-DDK
Symbol:	LINGO1
Synonyms:	LERN1; LRRN6A; MRT64; UNQ201
Vector:	pCMV6-Entry (PS100001)
E. coli Selection:	Kanamycin (25 ug/mL)
Cell Selection:	Neomycin



[View online »](#)

ORF Nucleotide Sequence:

>RC239095 representing NM_001301187
 Red=Cloning site Blue=ORF Green=Tags(s)

TTTTGTAATACGACTCACTATAGGGCGGCCGGAATTCGTCGACTGGATCCGGTACCGAGGAGATCTGCC
 GCC**CGCATCGCC**

ATGCTGGCGGGGGCGTGAGGAGCATGCCAGCCCCCTCTGGCCTGCTGGCAGCCCATCTCTGTCTGG
 TGCTGGGCTCAGTGTGTCAAGCTCGGCCACGGGCTGCCGCCCGCTGGGAGTGTCCGCCAGGACCG
 CGCTGTGTGTGCCACCGCAAGCGCTTTGTGGCAGTCCCCGAGGGCATCCCCACCGAGACGCGCCTGCTG
 GACCTAGGCAAGAACCGCATCAAACGCTCAACCAGGACGAGTTCGCCAGCTTCCCGCACCTGGAGGAGC
 TGGAGCTCAACGAGAACATCGTGAGCGCGTGGAGCCCGCGCCTTCAACAACCTCTTAACTCCGGAC
 GCTGGGTCTCCGAGCAACCGCTGAAGCTCATCCGCTAGGCGTCTTCACTGGCCTCAGCAACCTGACC
 AAGCTGGACATCAGCGAGAACAAGATCGTTATCTACTGGACTACATGTTTCAGGACCTGTACAACCTCA
 AGTCACTGGAGGTTGGGACAATGACCTCGTCTACATCTCTCACCAGCCTTCCAGCGCCTCAACAGCCT
 GGAGCAGTGCAGCTGGAGAAATGCAACCTGACCTCCATCCCCACCGAGGCGCTGTCCACCTGCACGGC
 CTATCGTCTGAGGCTCCGGCACCTCAACATCAATGCCATCCGGGACTACTCCTTCAAGAGGCTGTACC
 GACTCAAGGTCTTGGAGATCTCCCACTGGCCCTACTTGGACACCATGACACCCAACCTGCCTCTACGGCT
 CAACCTGACGTCCCTGTCCATCACACACTGCAATCTGACCGCTGTGCCCTACCTGGCCGTCGCCACCTA
 GTCTATCTCCGCTTCTCAACCTCTCTACAACCCCATCAGCACCATTGAGGGCTCCATGTTGCATGAGC
 TGCTCCGGCTGCAGGAGATCCAGCTGGTGGGCGGGCAGCTGGCCGTGGTGGAGCCATAGCCTTCCGCGG
 CCTCAACTACCTGCGCGTGTCAATGTCTCTGGCAACCAGCTGACCACACTGGAGGAATCAGTCTCCAC
 TCGGTGGCAACCTGGAGACACTCATCTGGACTCCAACCCGCTGGCCTGCGACTGTCCGCTCTGTGGG
 TGTTCCGGCGCCGCTGGCGGCTCAACTTCAACCGCAGCAGCCACGTGCCACGCCCCAGTTTGTCCA
 GGGCAAGGAGTTCAAGGACTTCCCTGATGTCTACTGCCCCAACTACTTCACTGCCGCGCGCCGCGCATC
 CGGGACCGCAAGGCCAGCAGGTGTTTGTGGACGAGGGCCACACGGTGCAGTTTGTGTGCCGGGCGGATG
 GCGACCCGCCCGCCATCCTCTGGCTCTCACCCGAAAGCACCTGGTCTCAGCCAAGAGCAATGGGCG
 GCTCACAGTCTTCCCTGATGGCACGCTGGAGGTGCGCTACGCCAGGTACAGGACAACGGCACGTACCTG
 TGCATCGCGGCCAACGCGGGCGGCAACGACTCCATGCCCGCCACCTGCATGTGCGCAGCTACTCGCCCG
 ACTGGCCCATCAGCCCAACAAGACCTTCGCTTTCATCTCAACCAGCCGGGCGAGGGAGAGGCCAACAG
 CACCCGCGCCACTGTGCCTTCCCTTCGACATCAAGACCCTCATCATGCCACCACCATGGGCTTCATC
 TCTTCTGGGCGTGTCTCTTCTGCCTGGTGTCTGTTTCTTGGAGCCGGGCAAGGGCAACACAA
 AGCACAACATCGAGATCGAGTATGTGCCCGAAAGTCGGACGCAGGCATCAGCTCCGCCACGCGCCCCG
 CAAGTTCAACATGAAGATGATA

ACGCGTACGCGGCCGCTCGAGCAGAACTCATCTCAGAAGAGGATCTGGCAGCAATGATATCCTGGATT
 ACAAGGATGACGACGATAAGGTTTAA

Protein Sequence:

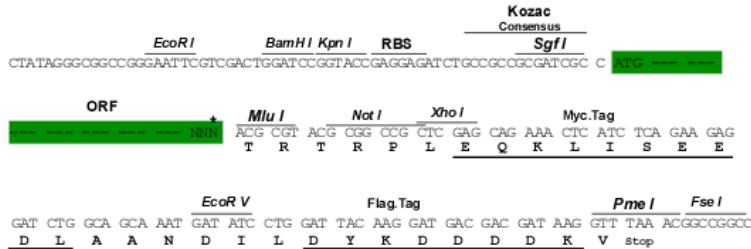
>RC239095 representing NM_001301187
 Red=Cloning site Green=Tags(s)

MLAGVRSMPSPILLACWQPILLVLSVLSGSATGCPPRCECSAQDRAVLCHRKRFBVAVPEGIPTETRL
 DLGKNRIKTLNQDEFASFPHLEELNENIVSAVEPGAFNNLFNLRRLGLRSNRLKLIPLGVFTGLSNLT
 KLDISENKIVILLDYMFDLYNLKLSLEVDNDLVYISHRAFSGLSLEQLTLEKCNLTSIPTEALSHLHG
 LIVLRLRHLNINAIRDYSFKRLYRLKVLEISHWPYLDTMTNCLYGLNLTSLSITHCNLTAVPYLAVRHL
 VYLRFLNLSYNPISITIEGSMHELLRLQEIQLVGGQLAVVEPYAFRGLNLYRVLNVSGNQLTTLEESVFH
 SVGNLETLILDSNPLACDCRLLWVFRWRWLNFRNQPTCATPEFVQKFKDFPDVLLPNYFTCRRARI
 RDRKAQQVFVDEGHTVQFVCRADGPPPAIWLSPRKHLVSAKSNGLTVFPDGTLEVRYAQVDNGTYL
 CIAANAGGNDSPAHLHVRYSYSPDWPHPNKTFAFISNQPGEGEANSTRATVPFPFDIKTLIIATTMGFI
 SFLGVVLFCLVLLFLWSRGKNTKHNIEIEYVPRKSDAGISSADAPRKFNMKMI

TRTRPLEQKLISEEDLAANDILDYKDDDDKV

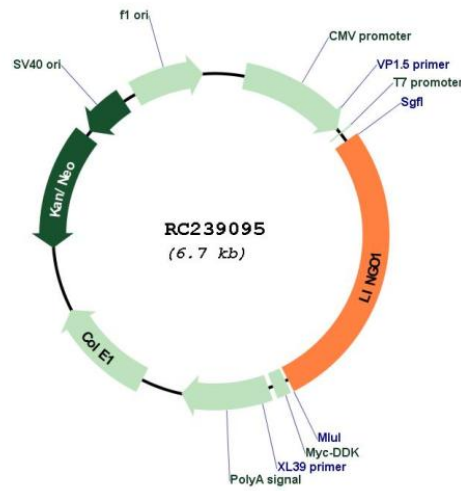
Restriction Sites: SgfI-MluI
 Cloning Scheme:

Cloning sites used for ORF Shuttling:



* The last codon before the Stop codon of the ORF

Plasmid Map:



ACCN: NM_001301187
 ORF Size: 1842 bp

OTI Disclaimer:	The molecular sequence of this clone aligns with the gene accession number as a point of reference only. However, individual transcript sequences of the same gene can differ through naturally occurring variations (e.g. polymorphisms), each with its own valid existence. This clone is substantially in agreement with the reference, but a complete review of all prevailing variants is recommended prior to use. More info
OTI Annotation:	This clone was engineered to express the complete ORF with an expression tag. Expression varies depending on the nature of the gene.
Components:	The ORF clone is ion-exchange column purified and shipped in a 2D barcoded Matrix tube containing 10ug of transfection-ready, dried plasmid DNA (reconstitute with 100 ul of water).
Reconstitution Method:	<ol style="list-style-type: none">1. Centrifuge at 5,000xg for 5min.2. Carefully open the tube and add 100ul of sterile water to dissolve the DNA.3. Close the tube and incubate for 10 minutes at room temperature.4. Briefly vortex the tube and then do a quick spin (less than 5000xg) to concentrate the liquid at the bottom.5. Store the suspended plasmid at -20°C. The DNA is stable for at least one year from date of shipping when stored at -20°C.
RefSeq:	NM_001301187.1 , NP_001288116.1
RefSeq Size:	3411 bp
RefSeq ORF:	1845 bp
Locus ID:	84894
UniProt ID:	Q96FE5
Cytogenetics:	15q24.3
Protein Families:	Druggable Genome, Transmembrane
MW:	69.6 kDa
Gene Summary:	Functional component of the Nogo receptor signaling complex (RTN4R/NGFR) in RhoA activation responsible for some inhibition of axonal regeneration by myelin-associated factors (PubMed:14966521, PubMed:15694321). Is also an important negative regulator of oligodentocyte differentiation and axonal myelination (PubMed:15895088). Acts in conjunction with RTN4 and RTN4R in regulating neuronal precursor cell motility during cortical development (By similarity).[UniProtKB/Swiss-Prot Function]