

Product datasheet for **RC239087**

STT3A (NM_001278504) Human Tagged ORF Clone

Product data:

| | |
|--------------------|---|
| Product Type: | Expression Plasmids |
| Product Name: | STT3A (NM_001278504) Human Tagged ORF Clone |
| Tag: | Myc-DDK |
| Symbol: | STT3A |
| Synonyms: | ITM1; STT3-A; TMC |
| Vector: | pCMV6-Entry (PS100001) |
| E. coli Selection: | Kanamycin (25 ug/mL) |
| Cell Selection: | Neomycin |



[View online »](#)

ORF Nucleotide Sequence:

>RC239087 representing NM_001278504
 Red=Cloning site Blue=ORF Green=Tags(s)

TTTTGTAATACGACTCACTATAGGGCGGCCGGAATTCGTCGACTGGATCCGGTACCGAGGAGATCTGCC
 GCC**CGCATCGCC**

ATGATCACCTCTGCTGCAATCTACCATGTACTCCATTTTTCCACATCACCATCGACATTCGGAATGTCT
 GTGTGTTCTGGCCCTCTCTTCTCCTCCTTACCACCATCGTCACGTACCACCTTACCAAAGAGCTCAA
 GGATGCAGGGGCTGGGCTTCTTGTCTGCTGCCATGATTGCTGTAGTTCTGGATATATCTCCCGATCTGTG
 GCTGGCTCCTATGATAATGAAGGGATTGCCATCTTTTGCATGCTACTCACCTACTACATGTGGATCAAGG
 CAGTAAAGACTGGTTCATCTGTGGGCAGCTAAGTGTGCCCTTGCTATTTCTACATGGTCTCGTCATG
 GGGAGTTATGTGTTCTGATCAACTTAATTCCTCTCCACGTCTCGTGTGATGCTCACAGGCCGTTTC
 TCTACCCGGATCTATGTGGCCTACTGTACTGTTTACTGCCTGGGCACTATACTTTCTATGCAGATCTCT
 TTGTGGGTTTCCAGCCTGTCCTTTCATCAGAGCACATGGCAGCCTTTGGGGTCTTTGGTCTCTGCCAGAT
 CCATGCCTTTGTGGATTACCTGCGCAGCAAGTTGAATCCACAACAATTTGAAGTTCTTTCCGGAGCGTC
 ATCTCTCTGGTAGGCTTTGTCTTCTCACCGTGGGAGCTCTCCTCATGCTGACAGGAAAAATATCTCCCT
 GGACGGGGCGTTTCTACTCGCTGCTGGATCCCTCTTATGCTAAGAACAACATCCCATCATTGCTTCTGT
 GTCTGAGCATCAGCCACAACCTGGTCCCTACTACTATTTTACCTGCAGCTCCTCGTCTTTCATGTTTCCA
 GTTGGCCTCTATTACTGCTTTAGCAACCTGTCTGATGCCCGGATTTTATCATCATGTATGGTGTGACCA
 GCATGTACTTTTTCAGCTGTAATGGTGCCTAATGCTAGTGTGGCACCTGTTATGTGCATTCTCTCTGG
 CATTGGAGTCTCCAGGTGCTGTCCACATACATGAAGAATCTGGACATAAGTCGTCAGACAAGAAGAGC
 AAGAAGCAACAGGATCCACCTACCCTATTAAGAATGAAGTGGCAAGTGGGATGATACTGGTCTATGGCTT
 TCTTTCTCATCACCTACACCTTTTCACTCAACCTGGGTGACCAGTGAGGCCTACTCTTCTCGTCCATTGT
 ACTATCTGCCCGTGGTGGGGATGGCAGTAGGATCATATTTGATGACTTCCGAGAAGCATATTATTGGCTT
 CGTCATAATACTCCAGAGGATGCGAAGGTGATGCTCCTGGTGGGATTATGGCTATCAGATTACAGCTATGG
 CAAACCGAACAATTTTAGTGGACAATAACACATGGAATAATACCCATATTTCTCGAGTAGGGCAGGCAAT
 GGCGTCCACAGAGGAAAAAGCCTATGAGATCATGAGGGAGCTCGATGTCAGCTATGTGCTGGTCATTTTT
 GGAGGCCCTCACTGGGTATTCCTCTGATGATATCAACAAGTTTCTTTGGATGGTCCGGATTGGAGGGAGCA
 CAGATACAGGCAACATATCAAGGAGAATGACTATTATACTCCAACCTGGGGAGTCCGTGTGGACCGTGA
 AGTTTCTCCAGTGTCTCAACTGCCTCATGTACAAGATGTGTTACTATCGCTTTGGACAGGTTTACACA
 GAAGCCAAGCGTCTCCAGGCTTTGACCGTGTCCGAAATGCTGAGATTGGGAATAAAGACTTTGAGCTTG
 ATGTCCTGGAGGAAGCATATACCACAGAACATTGGCTGGTCCAGGATATACAAGGTAAGGACCTGGATAA
 TCGAGGCTTGCAAGGACA

ACGCGTACGCGGCCGCTCGAGCAGAAACTCATCTCAGAAGAGGATCTGGCAGCAATGATATCCTGGATT
 ACAAGGATGACGACGATAAGGTTTAA

Protein Sequence:

>RC239087 representing NM_001278504
 Red=Cloning site Green=Tags(s)

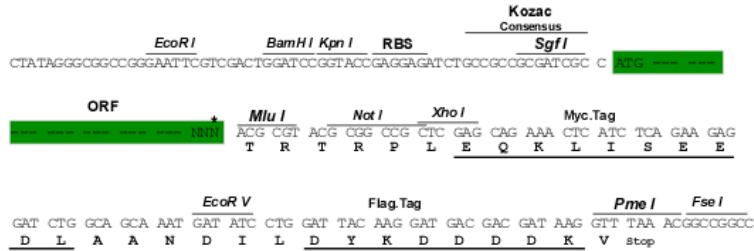
MITSAAIYHVLHFFHITIDIRNVCVFLAPLFFSSFTTIVTYHLTKELKDAGALLAAAMIIVVPGYISRSV
 AGSYDNEGIAIFCMLLTYYMWIKAVKTGSICWAAKCALAYFYMVSSWGGYVFLINLIPLHVLVLMITGRF
 SHRIYVAYCTVYCLGTLISMQISFVGFQPVLSSEHMAAFGVFGLCQIHAFVDYLRSLNPQQFEVLFVRSV
 ISLVGFVLLTVGALLMLTGKISPWTGRFYSLDPSYAKNNIPIIASVSEHQPTTWSSYYFDLQLLVFMFP
 VGLYYCFSNLSDARIFIIMYGVTSMYFSAVMVRMLVLPVMCILSGIGVSQVLSTYMKNLDIRPKKS
 KKQDSTYPIKNEVASGMILVMAFFLITYTFHSTWVTSEAYSSPSIVLSARGGDSRIIFDDFREAYYWL
 RHNTPEDAKVMSWWDYGYQITAMANRTILVDNNTWNNTHISRVGQAMASTEELKAYEIMRELDVSYVLVIF
 GGLTGYSSDDINKFLWMVRIGGSDTGTGHIKENDYYTPTGEFRVDREGSPVLLNCLMYKMCYRFQVYVY
 EAKRPPGFDRVRNAEIGNKDFELDVLEEAYTTEHWLVRIYKVKDLNDRGLSRT

TRTRPLEQKLISEEDLAANDILDYKDDDDKV

Restriction Sites: SgfI-MluI

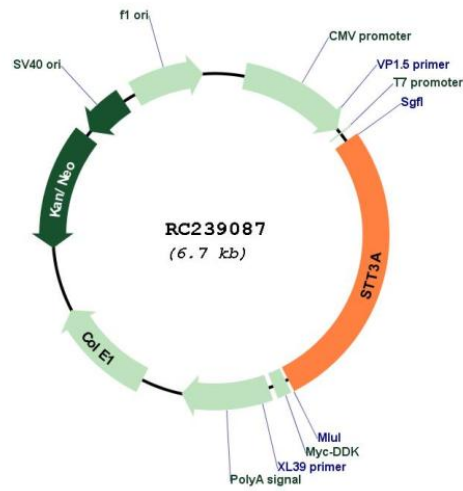
Cloning Scheme:

Cloning sites used for ORF Shutting:



* The last codon before the Stop codon of the ORF

Plasmid Map:



ACCN: NM_001278504

ORF Size: 1839 bp

| | |
|-------------------------------|---|
| OTI Disclaimer: | The molecular sequence of this clone aligns with the gene accession number as a point of reference only. However, individual transcript sequences of the same gene can differ through naturally occurring variations (e.g. polymorphisms), each with its own valid existence. This clone is substantially in agreement with the reference, but a complete review of all prevailing variants is recommended prior to use. More info |
| OTI Annotation: | This clone was engineered to express the complete ORF with an expression tag. Expression varies depending on the nature of the gene. |
| Components: | The ORF clone is ion-exchange column purified and shipped in a 2D barcoded Matrix tube containing 10ug of transfection-ready, dried plasmid DNA (reconstitute with 100 ul of water). |
| Reconstitution Method: | <ol style="list-style-type: none">1. Centrifuge at 5,000xg for 5min.2. Carefully open the tube and add 100ul of sterile water to dissolve the DNA.3. Close the tube and incubate for 10 minutes at room temperature.4. Briefly vortex the tube and then do a quick spin (less than 5000xg) to concentrate the liquid at the bottom.5. Store the suspended plasmid at -20°C. The DNA is stable for at least one year from date of shipping when stored at -20°C. |
| RefSeq: | NM_001278504.2 |
| RefSeq Size: | 4121 bp |
| RefSeq ORF: | 1842 bp |
| Locus ID: | 3703 |
| UniProt ID: | P46977 |
| Cytogenetics: | 11q24.2 |
| Protein Families: | Transmembrane |
| Protein Pathways: | Metabolic pathways, N-Glycan biosynthesis |
| MW: | 70 kDa |
| Gene Summary: | The protein encoded by this gene is a catalytic subunit of the N-oligosaccharyltransferase (OST) complex, which functions in the endoplasmic reticulum to transfer glycan chains to asparagine residues of target proteins. A separate complex containing a similar catalytic subunit with an overlapping function also exists. Multiple transcript variants encoding different isoforms have been found for this gene. [provided by RefSeq, Aug 2015] |