

Product datasheet for **RC239080**

ANKLE1 (NM_001278445) Human Tagged ORF Clone

Product data:

Product Type:	Expression Plasmids
Product Name:	ANKLE1 (NM_001278445) Human Tagged ORF Clone
Tag:	Myc-DDK
Symbol:	ANKLE1
Synonyms:	ANKRD41; LEM3; LEMD6
Vector:	pCMV6-Entry (PS100001)
E. coli Selection:	Kanamycin (25 ug/mL)
Cell Selection:	Neomycin



[View online »](#)

ORF Nucleotide Sequence:

>RC239080 representing NM_001278445
 Red=Cloning site Blue=ORF Green=Tags(s)

TTTTGTAATACGACTCACTATAGGGCGGCCGGAATTCGTCGACTGGATCCGGTACCGAGGAGATCTGCC
 GCC**CGGATCGCC**

ATGCCACAAGCCCCCGCGGAAGTAGGAAATCGACCGACCAGGCGGTGCGCTTCGGACCCAGCCAGGG
 CATGTGCTCGGAGGCCCGCTGGCTCGCAGGTTGCGGGATGCGCTGCGGGAGGAGGAGCCGTGTAGAGGA
 GCTGCTGCGCTGCGGCGCGGACCCTAATTTGGTCTAGAGGACGCGCAGCGGCTGTGCACTTGGCGGCC
 GGAGCCCGGACCCGCGCGGCTGCGTTGCCTCGGGGCCCTACTGCGCCAAGCGGGGACCCCAACGCTC
 GATCTGTGAGGCACTGACGCGCTGCATGTGGCCGCGCGTGGGGTCCCGCGCGGCTGGAGCTGT
 GCTGAGCCAAGGAGCGGACCCGCGCTGCGCGACCAGGACGACTCCGGCCGCTGGACCTGGCCCTGCAG
 CAGGGACACCTGGAGTGC GCGGAGTCTGCAGGATCTCGACACGCGGACCAGGACCCGGACCCGGATCG
 GGGCAGAGACTCAGGAGCCGAGCCTGCACCTGGCACCCAGGCCTCTCTGGACCTACCGATGAGACGCT
 GGACTCCATAGCACTCCAAAAGCAGCCATGCAGAGGTGACAACAGGGACATTGGCTTGGAGGCTGACCCA
 GGACCCCCAGCCTCCCTGTTCCCTTGAAACTGTGGACAACATGGGAGCTCGGCGTCCCTCCAGGGC
 ACTGGGATTACAGCTCAGACGCCTCTTTCGTACACGCGTTGAGGTCTCTGGAGCTGAGGACCCAGCCTC
 GGACACTCCCCCTGGGCTGGGTCAATGCCACCGACCAGGACGGACTTCTGCATGTTGCCATGCCAAC
 CAGAGGGTACCTAGGTCTCAGGGCACGGAGGCAGAAGTGAATGCCCGTCTGCAGGCCCTGACTCTGACCC
 CACCAATGCTGCTGGCTCCAGTCTCCCTTCCCTCCATGCCTCTCTGGACAGGAGTCCAGCTCATAG
 CCCCCACGGACCAACCCCTGGAGCTTCTGACTGCCACTGCCTGTGGGAGCACCAGACATCCATTGAT
 AGTGACATGGCCACGCTCTGGCTGACAGAGGATGAGGCAAGCTTACAGGTGGCAGGGAACCTGTGGCC
 CTTGCCGACCTGCCAGTCTCCACTGTGTCTGACTTGGAGTTGCTGAAGGGACTCCGAGCACTTGGCCC
 AGAGTTTTTCAGGGCACAGCCTAGAACTGGCTGCAGCCCTGCGGACGGGCTGTATTCCAGATGTCCAGGCA
 GATGAAGACGCGCTGGCCAGCAGTTTGTAGCAGCCAGATCCTGCCAGGAGTGGCGGAGGGGTCGTGA
 AGTCTAGCTTACCTATCTGCTGCTGGACCCAGGGAGACTCAGGACCTGCCAGCCGAGCCTTCTCACT
 GACCCAGCTGAGCGCCTCAGACTTTCATCCGTGCCATCTTCTACGTGGGCAAAGGGACGAGGGCCCGG
 CCATATGTCCACCTCTGGGAGGCCCTTGGTCACCATGGGCGTCAAGAAAACAGCCACCAGGCCTGCC
 CCAAGGTGCGTCAGATCTGGACATCTGGGCCAGTGGTTGCGGTGTTGTGTCCCTACATTGCTTCCAGCA
 CGTGGTCGCTGTGGAGGCTTATACAGGGAGGCGTGTATTGTGGAAGCCCTAGGGATCCAGACGCTCACC
 AACCAGAAGCAAGGGCACTGCTATGGAGTGGTGGCAGGCTGGCCACCTGCTCGTCCGGCGCTTGGGGG
 TGCACCTGCTGCACCGTCCCTCTTGTCTTCTGGCTGAAGGGCAGCGACAGCTTCATCCCCAGGACAT
 CCAGGCCCGGGC

ACGCGTACGCGGCCGCTCGAGCAGAAACTCATCTCAGAAGAGGATCTGGCAGCAAATGATATCCTGGATT
 ACAAGGATGACGACGATAAGGTTTAA

Protein Sequence:

>RC239080 representing NM_001278445
 Red=Cloning site Green=Tags(s)

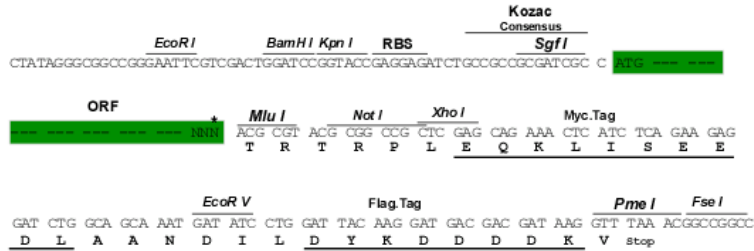
MPTSPPREVGNRPTRRCASDPARACARRPAWLAGCMRCGRRSRVEELLRCGADPNLVLEDGAAAVHLAA
 GARHPRGLRCLGALLRQGGDPNARSVEALTPLHVAAAWGCRRGLELLLSQGADPALRDQGLRPLDLALQ
 QGHLECARVLQDLDRTRTRTRIGAETQEPEPAGTGPLSGPTDETLDSIALQKQPCRGDNRDIGLEADP
 GPPSLPVPLETVDKHGSSASPPGHWDYSSDASFVTAVEVSGAEDPASDTPPWAGSLPPTRQGLLHVHAN
 QRVPRSQGTEAELNARLQALTLTPPNAAGFQSSPSSMPLLDSPAHSPPTPTPGASDCHLWEHQTSID
 SDMATLWLTEDEASSTGGREPVGPCRHLPVSTVSDLELLKGLRALGPEFSGHSLELAAALRTGCIPDVQA
 DEDALAQQFEQDPARRWREGVVKSSFTYLLLDPRETQDLPARAFSLTPAERLQTFIRAIFYVKGTRAR
 PYVHLWEALGHHGRSRKQPHQACPKVRQILDIWASGCGVVS LHCFQHVVAVEAYTREACIVEALGIQTLT
 NQKQGHYGVVAGWPPARRRRRLGVHLLHRALLVFLAEGERQLHPQDIQARG

TRTRPLEQKLISEEDLAANDILDYKDDDDKV

Restriction Sites: SgfI-MluI

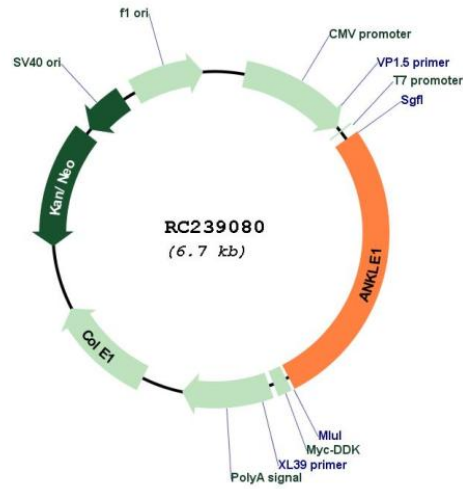
Cloning Scheme:

Cloning sites used for ORF Shuttling:



* The last codon before the Stop codon of the ORF

Plasmid Map:



ACCN: NM_001278445

ORF Size: 1833 bp

OTI Disclaimer:	The molecular sequence of this clone aligns with the gene accession number as a point of reference only. However, individual transcript sequences of the same gene can differ through naturally occurring variations (e.g. polymorphisms), each with its own valid existence. This clone is substantially in agreement with the reference, but a complete review of all prevailing variants is recommended prior to use. More info
OTI Annotation:	This clone was engineered to express the complete ORF with an expression tag. Expression varies depending on the nature of the gene.
Components:	The ORF clone is ion-exchange column purified and shipped in a 2D barcoded Matrix tube containing 10ug of transfection-ready, dried plasmid DNA (reconstitute with 100 ul of water).
Reconstitution Method:	<ol style="list-style-type: none">1. Centrifuge at 5,000xg for 5min.2. Carefully open the tube and add 100ul of sterile water to dissolve the DNA.3. Close the tube and incubate for 10 minutes at room temperature.4. Briefly vortex the tube and then do a quick spin (less than 5000xg) to concentrate the liquid at the bottom.5. Store the suspended plasmid at -20°C. The DNA is stable for at least one year from date of shipping when stored at -20°C.
RefSeq:	NM_001278445.1 , NP_001265374.1
RefSeq Size:	3135 bp
RefSeq ORF:	1728 bp
Locus ID:	126549
UniProt ID:	Q8NAG6
Cytogenetics:	19p13.11
MW:	66.6 kDa
Gene Summary:	Endonuclease that probably plays a role in the DNA damage response and DNA repair. [UniProtKB/Swiss-Prot Function]