

Product datasheet for **RC239041**

ZNF343 (NM_001282496) Human Tagged ORF Clone

Product data:

Product Type:	Expression Plasmids
Product Name:	ZNF343 (NM_001282496) Human Tagged ORF Clone
Tag:	Myc-DDK
Symbol:	ZNF343
Synonyms:	dj734P14.5
Vector:	pCMV6-Entry (PS100001)
E. coli Selection:	Kanamycin (25 ug/mL)
Cell Selection:	Neomycin



[View online »](#)

ORF Nucleotide Sequence:

>RC239041 representing NM_001282496
 Red=Cloning site Blue=ORF Green=Tags(s)

TTTTGTAATACGACTCACTATAGGGCGGCCGGAATTCGTCGACTGGATCCGGTACCGAGGAGATCTGCC
 GCC**CGCATCGCC**

ATGATGTTGCCTTATCCTTCAGCACTGGGAGATCAATACTGGGAAGAGATTTTGCTTCCAAGAATGGGG
 AAAATGTAGAGACTATGAAGAAATTGACCCAAAATCATAAAGCGAAAGGCTTGCCTTCTAATGATACTGA
 CTGCCCCAGAAAAAGGAGGAAAGGCCAAAATAGTGGTACCAGTTACATTCAGGGATGTGACTGTGATC
 TTCACAGAAGCAGAATGGAAGAGACTGAGTCCAGAGCAGAGGAATCTATACAAAGAAGTGATGCTGGAGA
 ATTACAGGAATCTTCTCTATTGGCAGAACCAAAGCCAGAAAATCTACACTTGTTCCTCCTGCCTTCTGGC
 CTTCTCCTGTGAGCAGTTCTCAGTCAACATGTACTTCAGATCTTCTGGGCTTATGTGCAGAAAATCAC
 TTCCATCCAGGAATTCTAGCCAGGGCATTGAAACAGCAGGGGCAGCAGTATCCCATGTAAGCTGTT
 GGTGGTAAAGTGCAGAAGTCCAGAGAGAGGAGGTGGTCCAAACCTGGTCTGCAAGGACAGAGGAGAG
 AGAAACCTCAAGGGCATTCCCCAGCCACTCAAAGACAGTCAGCAAGTCTAGAAAAGGCAACATGGTG
 GTAGAAAACAGAGCCAGCTCAGCCCAAAGACCAAACCTGTGCAGCTAGACAAAAGGCTTGAAGGAATTAG
 AAACCTTGAGATTTGGAGCAATCAACTGTAGAGAGTATGAACCGACCATAACCTGGAATCAAACCTTAT
 TACAAACCCGAGGACCCTCTTAGGGAAGAAGCCCTACATTTGCAGTGATTGTGGGCGAAGCTTTAAAGAT
 AGATCAACCTCATCAGACACCATCGTATACACTCGATGGAGAAGCCTTATGTGTGACAGTGTGCGGGC
 GAGGTTTTAGCCAGAAGTCCAACCTCAGCAGACACCAGAGAACACATTCAGAAGAGAAGCCTTATTTGTG
 CAGGGAGTGTGGCAAAGCTTTAGAAGTAAAGTCCATCCTCAATAGACATCAGTGGACTCACTCAGAGGAG
 AAGCCCTATGTTGCAGCGAGTGTGGCGAGGCTTTAGCGAGAAGTCATCCTTCATCAGACACCAGAGGA
 CACTCCGGTGAGAAACCTATGTGTGCCTGGAGTGTGGACGAAGCTTTTGTGATAAGTCAACCTCAG
 AAAACACCAGAGGATACACTCAGGGGAGAAGCCTTATGTTTGCAGGGAGTGTGGCGAGGCTTTAGCCAG
 AACTCAGATCTCATCAAACACCAGAGGACACACTTGGATGAGAAGCCTTATGTTTGCAGGGAGTGTGGC
 GAGGCTTTTGTGACAAGTCAACCTCATCATACAGAGCGGACGCACTCTGGAGAGAAGCCTTATGTGTG
 TGGTGAGTGTGGCCGAGGCTTTAGTCGAAATCACTCCTCCTTGTCCACCAGAGGACACACTCAGGGGAG
 AAGCATTATGTCTGCAGGGAGTGTAGGCGAGGTTTTAGCCAGAAGTCAAATCTCATCAGACACCAGAGGA
 CGCACTCAAATGAGAAGCCTTATTTGCAGGGAATGTGGCGAGGCTTTTGTGACAAGTCAACCTCAT
 TGTACATGAGAGGACACACTCAGGAGAGAAGCCTTACGTGTGAGTGTGGCCGAGGCTTTAGCCGG
 AAATCACTCCTCCTTGTCCACCAGAGGACACACTCAGGGGAGAAGCATTATGTTTGTAGGGAGTGTGGC
 GAGGCTTTAGTCATAAGTCAAATCTCATCAGACACCAGAGGACACAC

ACGCGTACGCGGCCGCTCGAGCAGAAACTCATCTCAGAAGAGGATCTGGCAGCAAATGATATCCTGGATT
 ACAAGGATGACGACGATAAGGTTTAA

Protein Sequence:

>RC239041 representing NM_001282496
 Red=Cloning site Green=Tags(s)

MMLPYPSALGDQYWEEILLPKNGENVETMKKLTQNHKAKGLPSNDTDCPQKKEGKAQIVVPVTRFDVTVI
 FTEAEWKRLSPEQRNLYKEVMLENYRNLLSLAEPKPEIYTCSSLLAFSCQQFLSQHVLQIFLGLCAENH
 FHPGNSSPGHWKQGGQYSHVSCWFENAEGQERGGGSKPWSARTEERETSRAFPSPLQRQSASPRKGNMV
 VETEPSSAQRPNPVQLDKGLKELETLRFGAINCREYEPDHNLESNFITNPRTLLGKKPYICSDCGRSFKD
 RSTLIRHHRHISMEKPYVCSEGRGFSQKSNLSRHQRTHSEKPYLCRECGQSFRSKSILNRHQWTHSEE
 KPYYVCSEGRGFSEKSSFIRHQRTHSSEKPYVCLCGRSFCDKSTLRKHQRHISSEKPYVCSEGRGFSQ
 NSDLIKHQRTHLDEKPYVCSEGRGFSQKSTLIIHERTHSSEKPYVCGECGRGFSRKSLLLHQWTHSSE
 KHYVCRECRGFSQKSNLIRHQRTHSSEKPYICRECRGFSQKSTLIVHERTHSSEKPYVCSEGRGFSR
 KSLLLHQWTHSSEKHYVCRECRGFSQKSNLIRHQRTH

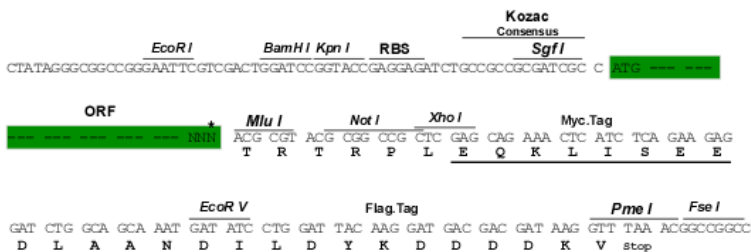
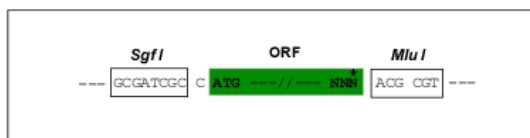
TRTRPLEQKLISEEDLAANDILDYKDDDDKV

Restriction Sites:

SgfI-MluI

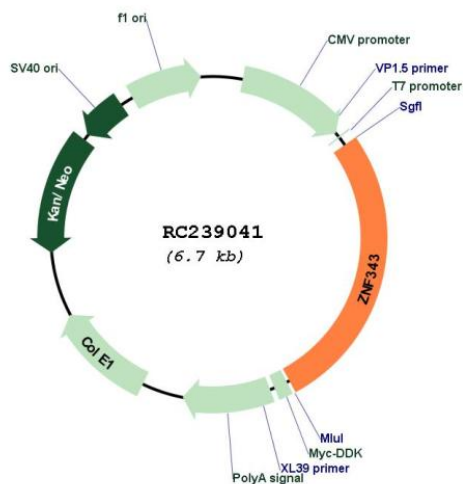
Cloning Scheme:

Cloning sites used for ORF Shuttling:



* The last codon before the Stop codon of the ORF

Plasmid Map:



ACCN: NM_001282496

ORF Size: 1797 bp

OTI Disclaimer:	The molecular sequence of this clone aligns with the gene accession number as a point of reference only. However, individual transcript sequences of the same gene can differ through naturally occurring variations (e.g. polymorphisms), each with its own valid existence. This clone is substantially in agreement with the reference, but a complete review of all prevailing variants is recommended prior to use. More info
OTI Annotation:	This clone was engineered to express the complete ORF with an expression tag. Expression varies depending on the nature of the gene.
Components:	The ORF clone is ion-exchange column purified and shipped in a 2D barcoded Matrix tube containing 10ug of transfection-ready, dried plasmid DNA (reconstitute with 100 ul of water).
Reconstitution Method:	<ol style="list-style-type: none">1. Centrifuge at 5,000xg for 5min.2. Carefully open the tube and add 100ul of sterile water to dissolve the DNA.3. Close the tube and incubate for 10 minutes at room temperature.4. Briefly vortex the tube and then do a quick spin (less than 5000xg) to concentrate the liquid at the bottom.5. Store the suspended plasmid at -20°C. The DNA is stable for at least one year from date of shipping when stored at -20°C.
RefSeq:	NM_001282496.2
RefSeq Size:	3602 bp
RefSeq ORF:	1800 bp
Locus ID:	79175
UniProt ID:	Q6P1L6
Cytogenetics:	20p13
Protein Families:	Transcription Factors
MW:	69.7 kDa
Gene Summary:	May be involved in transcriptional regulation.[UniProtKB/Swiss-Prot Function]