

Product datasheet for **RC238957**

MPP2 (NM_001278372) Human Tagged ORF Clone

Product data:

Product Type:	Expression Plasmids
Product Name:	MPP2 (NM_001278372) Human Tagged ORF Clone
Tag:	Myc-DDK
Symbol:	MPP2
Synonyms:	DLG2
Vector:	pCMV6-Entry (PS100001)
E. coli Selection:	Kanamycin (25 ug/mL)
Cell Selection:	Neomycin



[View online »](#)

ORF Nucleotide Sequence:

>RC238957 representing NM_001278372
 Red=Cloning site Blue=ORF Green=Tags(s)

TTTTGTAATACGACTCACTATAGGGCGGCCGGAATTCGTCGACTGGATCCGGTACCGAGGAGATCTGCC
 GCC**CGGATCGCC**

ATGCCGGTTGCCGCCACCAACTCTGAAACTGCCATGCAGCAAGTCTGGACAACCTGGGATCCCTCCCCA
 GTGCCACGGGGCTGCAGAGCTGGACCTGATCTTCCTTCGAGGCATTATGGAAAGTCCCATAGTAAGATC
 CCTGGCCAAGGTGATAATGGTATTGTGGTTTATGCAGCAGAATGTCTTTGTTCTATGAAATACATGCTG
 AAATACTTTGGGGCCATGAGAGGCTGGAGGAGACGAAGCTGGAGGCCGTGAGAGACAACAACCTGGAGC
 TGGTGCAGGAGATCCTGCGGGACCTGGCGCAGCTGGCTGAGCAGAGCAGCACAGCCGCCGAGCTGGCCCA
 CATCCTCCAGGAGCCCCACTTCCAGTCCCTCTGGAGACGCAGACTCTGTGGCCTCAAAGACCTATGAG
 ACACCACCCCCAGCCCTGGCCTGGACCCTACATTCAGCAACCAGCCTGTACCTCCCGATGCTGTGCGCA
 TGGTGGGCATCCGCAAGACAGCCGGAGAACATCTGGGTGAACGTTCCGCGTGGAGGGCGCGGAGCTGGT
 GATCGCGCGCATTCTGCATGGGGCATGGTGGCTCAACAAGGCCCTGCTGCATGTGGGTGACATCATCAAG
 GAGGTGAACGGGAGCCAGTGGGCAAGTACCCCGCGCACTGCAGGAGCTCCTGCCAATGCCAGTGGCA
 GTGTCATCCTCAAGATCCTGCCAGCTACCAGGAGCCCCATCTGCCCGCCAGGTATTTGTGAAATGTCA
 CTTTGACTATGACCCGGCCCGAGACAGCCTCATCCCTGCAAGGAAGCAGGCCTGCGCTTCAACGCCGGG
 GACTTGCTCCAGATCGTAAACCAGGATGATGCCAACTGGTGGCAGGCATGCCATGTCAAGGGGGCAGTG
 CTGGGCTCATTCCCAGCCAGCTGCTGGAGGAGAAGCGAAAGCATTGTCAAGAGGGACCTGGAGCTGAC
 ACCAAACTCAGGGACCTATGCGGCAGCCTTTCAGGAAAGAAAAGAAGCGAATGATGTATTTGACCACC
 AAGAATGCAGAGTTTGACCGTCATGAGCTGCTCATTTATGAGGAGGTGGCCGCATGCCCCGTTCCGCC
 GGAAACCCCTGGTACTGATTGGGGCTCAGGGCGTGGGACGGCGCAGCCTGAAGAACAAGTCATCATGTG
 GGATCCAGATCGCTATGGCACCACGGTGCCTACACCTCCCGCGGCCGAAAGACTCAGAGCGGGAAGGT
 CAGGGTTACAGCTTTGTGTCCTGCGGGAGATGGAGGCTGACGTCCTGCTGGGCGCTACCTGGAGCATG
 GCGAATACGAGGGCAACCTGTATGGCACACGTATTGACTCCATCCGGGGCGTGGTCTGCTGGGAAGGT
 GTGCGTCTGGATGTCAACCCCCAGGCGGTGAAGGTGCTACGAACGGCCGAGTTTGTCCCTTACGTGGT
 TTCATCGAGGCCCCAGACTTCGAGACCTGCGGGCCATGAACAGGGCTGCGCTGGAGAGTGAATATCCA
 CCAAGCAGCTCACGGAGGCGGACCTGAGACGGACAGTGGAGGAGAGCAGCCGCATCCAGCGGGGCTACGG
 GCACTACTTTGACCTCTGCTGGTCAATAGCAACCTGGAGAGGACCTTCCGCGAGCTCCAGACAGCCATG
 GAGAAGCTACGGACAGAGCCCCAGTGGGTGCCTGTCAGCTGGGTGTAC

ACGCGTACGCGGGCCGCTCGAGCAGAAACTCATCTCAGAAGAGGATCTGGCAGCAAATGATATCCTGGATT
 ACAAGGATGACGACGATAAGGTTTAA

Protein Sequence:

>RC238957 representing NM_001278372
 Red=Cloning site Green=Tags(s)

MPVAATNSETAMQQVLDNLGSLPSATGAAELDLIFLRGIMESPIVRSLAKVIMVLWFMQQNVFVPMKYML
 KYFGAHERLEETKLEAVRDNNLELVQEILRDLAQLAEQSSTAELAHLQEPHFQSLLETHDSVASKTYE
 TPPPSPGLDPTFSNQPVPPDAVRMVGIRKTAGEHLGVTFRVEGGELVIARILHGMVAQQGLLHVGDIIK
 EVNGQPVGSDPRALQELLRNASGSVILKILPSYQEPHLPRQVFKCHFVDPARDLSLIPCKEAGLRFNAG
 DLLQIVNQDDANWWQACHVEGGSAGLIPSQLEEKRFKAFVKRDLELTPNSGTLGSLSGKKKRMMYLT
 KNAEFDRHELLIYEEVARMPPFRKTLVLIQAQGVGRSLKNKLIMWDPDRYGTTPYTSRRPKDSEREG
 QGYSFVSRGEMADVVRAGRYLEHGEYEGNLYGTRIDSIRGVVAAGKVCVLDVNPQAVKVLRTAEFVYV
 FIEAPDFETLRAMNRAALESISTKQLTEADLRRTVEESSRIQRGYGHYFDLCLVNSNLERTFRELQTAM
 EKLRTPEQWVPSWVY

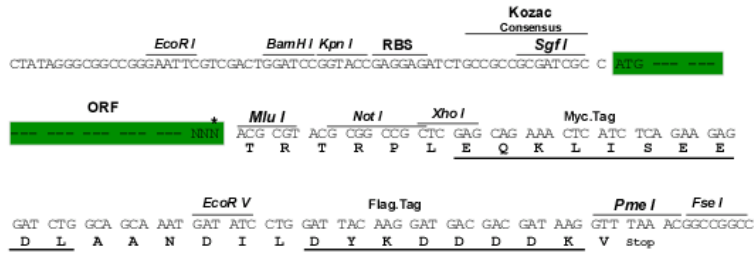
TRTRPLEQKLISEEDLAANDILDYKDDDDKV

Restriction Sites:

Sgfl-Mlul

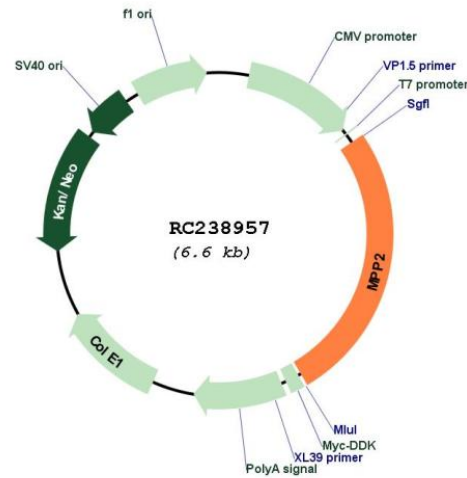
Cloning Scheme:

Cloning sites used for ORF Shutting:



* The last codon before the Stop codon of the ORF

Plasmid Map:



ACCN: NM_001278372
 ORF Size: 1728 bp

OTI Disclaimer:	The molecular sequence of this clone aligns with the gene accession number as a point of reference only. However, individual transcript sequences of the same gene can differ through naturally occurring variations (e.g. polymorphisms), each with its own valid existence. This clone is substantially in agreement with the reference, but a complete review of all prevailing variants is recommended prior to use. More info
OTI Annotation:	This clone was engineered to express the complete ORF with an expression tag. Expression varies depending on the nature of the gene.
Components:	The ORF clone is ion-exchange column purified and shipped in a 2D barcoded Matrix tube containing 10ug of transfection-ready, dried plasmid DNA (reconstitute with 100 ul of water).
Reconstitution Method:	<ol style="list-style-type: none">1. Centrifuge at 5,000xg for 5min.2. Carefully open the tube and add 100ul of sterile water to dissolve the DNA.3. Close the tube and incubate for 10 minutes at room temperature.4. Briefly vortex the tube and then do a quick spin (less than 5000xg) to concentrate the liquid at the bottom.5. Store the suspended plasmid at -20°C. The DNA is stable for at least one year from date of shipping when stored at -20°C.
RefSeq:	NM_001278372.2
RefSeq Size:	4717 bp
RefSeq ORF:	1731 bp
Locus ID:	4355
UniProt ID:	Q14168
Cytogenetics:	17q21.31
Protein Families:	Druggable Genome
MW:	65 kDa
Gene Summary:	Palmitoylated membrane protein 2 is a member of a family of membrane-associated proteins termed MAGUKs (membrane-associated guanylate kinase homologs). MAGUKs interact with the cytoskeleton and regulate cell proliferation, signaling pathways, and intracellular junctions. Palmitoylated membrane protein 2 contains a conserved sequence, called the SH3 (src homology 3) motif, found in several other proteins that associate with the cytoskeleton and are suspected to play important roles in signal transduction. [provided by RefSeq, Jul 2008]