

## Product datasheet for **RC238931**

### CRMP1 (NM\_001288661) Human Tagged ORF Clone

#### Product data:

Product Type:	Expression Plasmids
Product Name:	CRMP1 (NM_001288661) Human Tagged ORF Clone
Tag:	Myc-DDK
Symbol:	CRMP1
Synonyms:	CRMP-1; DPYSL1; DRP-1; DRP1; ULIP-3
Vector:	pCMV6-Entry (PS100001)
E. coli Selection:	Kanamycin (25 ug/mL)
Cell Selection:	Neomycin



[View online »](#)

**ORF Nucleotide Sequence:**

>RC238931 representing NM\_001288661  
 Red=Cloning site Blue=ORF Green=Tags(s)

TTTTGTAATACGACTCACTATAGGGCGGCCGGAATTCGTCGACTGGATCCGGTACCGAGGAGATCTGCC  
 GCC**CGGATCGCC**

ATGCAGAAAATGAACAACGAAGTGGTGGACAAGAGTGACCGACTCCTCATCAAAGGTGGACGGATCATCA  
 ACGATGACCAATCCCTTTATGCTGACGCTACCTGGAGGATGGACTTATCAAACAAATAGGAGAGAACTT  
 AATCGTTCCTGGTGGAGTGAAGACCATTGAAGCCAACGGGCGGATGGTTATCCCGGAGGTATTGATGTC  
 AACACGTACCTGCAGAAGCCCTCCAGGGGATGACTGCGGCTGATGACTTCTTCCAAGGGACCAGGGCGG  
 CACTGGTGGGCGGACCACGATGATCATTGACCATGTTGTTCTGAACCTGGGTCCAGCCTACTGACCTC  
 TTTGAGAAGTGGCACGAAGCAGCTGACACCAAATCCTGCTGTGATTACTCCCTCCACGTGGACATCACA  
 AGCTGGTACGATGGCGTTCGGGAGGAGCTGGAGGTGCTGGTGCAGGACAAAGGCGTCAATTCCTTCCAAG  
 TCTACATGGCCTATAAGGATGTCTACCAAATGTCCGACAGCCAGCTCTATGAAGCCTTTACCTTCTTAA  
 GGGCCTGGGAGCTGTGATCTTGGTCCATGCAGAAAATGGAGATTTGATAGCTCAGGAACAAAAGCGGATC  
 CTGGAGATGGGCATCACGGTCCCGAGGGCCATGCCCTGAGCAGACCTGAAGAGCTGGAGGCCGAGGCGG  
 TGTTCCGGGCCATCACCAATTGCGGGCCGGATCAACTGCCCTGTGTACATACCAAGGTATGAGCAAGAG  
 TGCAGCCGACATCATCGCTCTGGCCAGGAAGAAAGGGCCCTAGTTTTGGAGAGCCATTGCCGCCAGC  
 CTGGGGACCGATGGCACCCATTACTGGAGCAAGAACTGGGCCAAGGCTGCGGCGTTTCGTGACTTCCCTC  
 CCCTGAGCCCGGACCCTACCACGCCGACTACTTGACCTCCCTACTGGCCTGTGGGGACTTGCAGGTCAC  
 AGGCAGCGGCCACTGTCCCTACAGCACTGCCAGAAGGCGGTGGCAAGGACAACCTTTACCTGATCCCC  
 GAGGGTGTCAACGGGATAGAGGAGCGGATGACGGTCTGCTGGGACAAGGCGGTGGCTACTGGCAAAATGG  
 GAGAAACCAAGTTTGTGCTGTCAACGACCAATGCAGCCAAGATCTTTAACCTGTACCCAAGGAAAGG  
 GCGGATTGCCGTTGGGCTCGGATGCCGACGTGGTCACTGGGACCCCGACAAGTTGAAGACCATAAACAGCC  
 AAAAGTACAAGTTCGGCGGTGGAGTACAACATCTTCGAGGGTATGGAGTGCACGCTCCCACTAGTGG  
 TCATCAGCCAGGCAAGATCGTCTTTGAAGACGGAACATCAACGTCAACAAGGGCATGGGCCGCTTCAT  
 TCCGCGGAAGGCGTTCCCGGAGCACCTGTACCAGCGCTCAAAATCAGGAATAAGGTTTTGGATTGCAA  
 GGGTTTTCCAGGGCATGTATGACGGTCTGTGTACGAGTACCAGCTACACCAAAATGCAACTCCCG  
 CTCCTTACGCAAATCTTCGCTTCTAAACACCAGCCCCACCCATCAGAAACCTCCACCAGTCAA  
 CAGCTTATCAGGTGCCAGATAGATGACAACAATCCAGGCGCACCGCCACCGCATCGTGGCGCCCTT  
 GGTGGCCGCTCCAACATCACAGCCTCGT

**ACGCGT**ACGCGGCCGCTCGAGCAGAAACTCATCTCAGAAGAGGATCTGGCAGCAAATGATATCCTGGATT  
 ACAAGGATGACGACGATAAGGTTTAA

**Protein Sequence:**

>RC238931 representing NM\_001288661  
 Red=Cloning site Green=Tags(s)

MQKMNNEVVDKSDRLLIKGGRIINDDQSLYADVYLEDLIKQIGENLIVPGGVKTIENGRMVIPIGGIDV  
 NTYLQKPSQGMTAADDFFQGTAAALVGGTMIIDHVPEPSSLLTSFEKWHEAADTKSCCDYSLHVDIT  
 SWYDGVREELEVLVQDKGVNSFQVYMAKYDVYQMSDSL YEAF TFLKGLGAVILVHAENGLIAQEQRRI  
 LEMGITGPEGHALSRPEELEAEAVFRAITIAGRINCPVYITKVMKSAADIIALARKKGPLVFGEPAAAS  
 LGTDGTHYWSKNWAKAAAFVTSPLSPDPTPDYLTSLACGDLQVTGSGHCPYSTAQKAVGKDNFTLIP  
 EGVNGIEERMTVVWDKAVATGKMDENQFVAVTSTNAKIFNLYPRKGRIAVGSDADVVIWDPDKLTITA  
 KSHKSAVEYNIFEGMECHGSPLVVISQKIVFEDGNINVNKGMGRFIPRKAFPEHLYQRVKIRNKVFLQ  
 GVSRRMGYPVYVATPKYATPAPSAKSSPSKHQPPP IIRNLHQSNFSLSGAQIDDNNPRRTGHRIVAPP  
 GGRSNITSLG

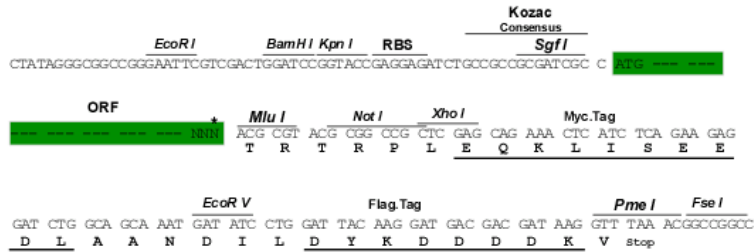
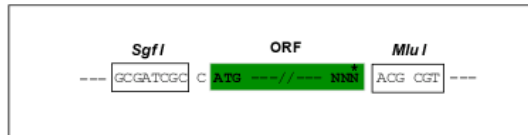
**TRTRPLEQKLI**SEEDLAANDILDYKDDDDKV

**Restriction Sites:**

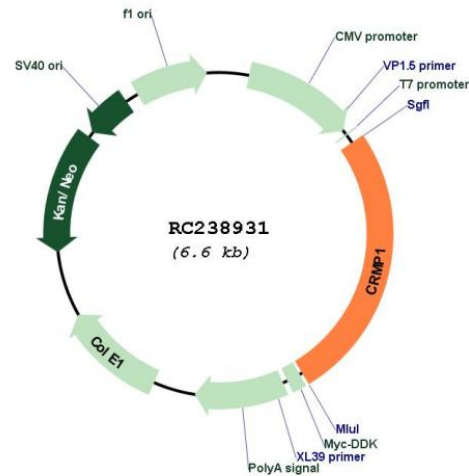
Sgfl-MluI

**Cloning Scheme:**

Cloning sites used for ORF Shutting:



\* The last codon before the Stop codon of the ORF

**Plasmid Map:**


ACCN: NM\_001288661

ORF Size: 1710 bp

<b>OTI Disclaimer:</b>	The molecular sequence of this clone aligns with the gene accession number as a point of reference only. However, individual transcript sequences of the same gene can differ through naturally occurring variations (e.g. polymorphisms), each with its own valid existence. This clone is substantially in agreement with the reference, but a complete review of all prevailing variants is recommended prior to use. <a href="#">More info</a>
<b>OTI Annotation:</b>	This clone was engineered to express the complete ORF with an expression tag. Expression varies depending on the nature of the gene.
<b>Components:</b>	The ORF clone is ion-exchange column purified and shipped in a 2D barcoded Matrix tube containing 10ug of transfection-ready, dried plasmid DNA (reconstitute with 100 ul of water).
<b>Reconstitution Method:</b>	<ol style="list-style-type: none"><li>1. Centrifuge at 5,000xg for 5min.</li><li>2. Carefully open the tube and add 100ul of sterile water to dissolve the DNA.</li><li>3. Close the tube and incubate for 10 minutes at room temperature.</li><li>4. Briefly vortex the tube and then do a quick spin (less than 5000xg) to concentrate the liquid at the bottom.</li><li>5. Store the suspended plasmid at -20°C. The DNA is stable for at least one year from date of shipping when stored at -20°C.</li></ol>
<b>RefSeq:</b>	<a href="#">NM_001288661.2</a>
<b>RefSeq Size:</b>	3278 bp
<b>RefSeq ORF:</b>	1713 bp
<b>Locus ID:</b>	1400
<b>UniProt ID:</b>	<a href="#">Q14194</a>
<b>Cytogenetics:</b>	4p16.2
<b>MW:</b>	62.5 kDa
<b>Gene Summary:</b>	This gene encodes a member of a family of cytosolic phosphoproteins expressed exclusively in the nervous system. The encoded protein is thought to be a part of the semaphorin signal transduction pathway implicated in semaphorin-induced growth cone collapse during neural development. Alternative splicing results in multiple transcript variants. [provided by RefSeq, Jul 2008]