

Product datasheet for **RC238898**

LRIT2 (NM_001284223) Human Tagged ORF Clone

Product data:

Product Type:	Expression Plasmids
Product Name:	LRIT2 (NM_001284223) Human Tagged ORF Clone
Tag:	Myc-DDK
Symbol:	LRIT2
Synonyms:	LRRC22
Vector:	pCMV6-Entry (PS100001)
E. coli Selection:	Kanamycin (25 ug/mL)
Cell Selection:	Neomycin



[View online »](#)

ORF Nucleotide Sequence:

>RC238898 representing NM_001284223
 Red=Cloning site Blue=ORF Green=Tags(s)

TTTTGTAATACGACTCACTATAGGGCGGCCGGAATTCGTCGACTGGATCCGGTACCGAGGAGATCTGCC
 GCC**GCGATCGCC**

ATGGCTTCAGTTTTTCTACTTCTGTTAGTCTGGTCTTTCTGGATACACACGCGAGCTCAGCCTTTCT
 GTCTGCCAGGATGCACCTTCTCAGAGGAGAGTTTTGGCAGGACTCTGCAGTGCACATCTGTCTCCTTGGG
 AAAGATCCCTGGGAACCTTTCTGAAGAGTTCAAGCAAGTGAGAATTGAAAATTCACCTTATTTGAGATG
 CCCCAAGGGTCTTTCATCAACATGAGCACCTTGGAAACCTCTGGCTCAATTTTAACAATATCAGTGTGA
 TCCACCTAGGAGCCCTGGAAACCTGCCAGAAGTGGGGAGCTGAGACTGGAGGGGAAACAAGCTCTGCTC
 AGTACCATGGACAGCGTCCGTGCCACCCCTCTCCTGAGGGTCTTGATCTCAAACGCAACAAGATTGAT
 GCACTCCCTGAGCTGGCTCTTCAATTCTGGTCAAGCTGACCTACCTTGACCTATCTCCAATAGGCTTA
 CAGTTGTATCCAAGAGTGTCTTCTGAAGTGGCCAGCCTACCAGAAATGCCGGCAGCCTGACTGTGGGGC
 TGAGATTCTCCAGCCTGGTGGTGGCCCTGCATGACAACCCCTGGGTATGTGACTGTGCGCTAAGGGGG
 CTTGTCCAGTTTGTCAAGTCCATTACCCTCCAGTCATCTGGTGAATTCCTACCTGATATGTCAGGGCC
 CTCTGTCCAAGGCAGGGCAGCTTTTTCATGAAACTGAGCTTAGTGCTTGATGAAGCCACAGATCTCAAC
 CCCAGTGCCAATATCACCATCCGGGCAGGACAGAATGTGACCCTGCGATGCTTGGCACAGGCCAGCCCC
 TCACCATCCATTGCATGGACTTATCCCCTGAGTATGTGGAGAGAAATTTGATGGATTGCTGGGAGGCAAA
 ACCTGACACCAGTGTGACATCTTACTGGAGAAGACTGCTCTGTGAGAGCTGGCCATACCTGCTGC
 CCACCTGGTAGACAGTGGTAATTACACCTGCATGGCCCTCAACTCCATTGGCAAGAGCAACCTTGTAAATC
 TCTCTCCATGTCCAGCCTGCCAGGCCCTACATGCACCTGATTCTCTTTCCATCCCCTCGGAGGGCAATG
 CCTACATTGACCTGCGGGTTGTCAAGCAGACAGTGCATGGGATTTTGTGGAGTGGCTTGCAGTGGGGA
 CACCTCTAAGGAGGAGTGGTTACCCCTCTACATTGCATCGGATGAAGCCTTCAGGAAGGAGGTGGTTTAC
 ATTGGCCCCGGAATCAATACTTATGCTGTGGATGACCTCCTTCTGACACAAAATATGAGCCTGCCTCA
 GCCTAGAGGGCCAGCCTCCACACCAGGGCCAGTGTGTAGCTTTTGTAAACAGGCAGAGATGCTGGTGGCT
 AGAGGCACGTGAGCACCTCCTGCATGTACAGTGGTCTGTGTGGTGTGCTTGCAGTGCCTGTGGGC
 GCCTATGCCTGGGCAGCCAGGGCCCTGCAGCTGCAGCAAGTGGGTCTGCGCGGCTGTCTTCATCGCA
 GGAAAGCCCCAGCTGCACCCCTGCAGCCCCGAGTCCAAGGATGGCTCCTTTAGAGAACATCCAGCTGT
 CTGTGATGACGGTGAAGGGCACATAGACTGAGGGGGACAAGGAGAAAGGAGGAACGGAAGACAACAGC

ACGCGTACGCGGCCGCTCGAGCAGAAACTCATCTCAGAAGAGGATCTGGCAGCAAATGATATCCTGGATT
ACAAGGATGACGACGATAAGGTTTAA

Protein Sequence:

>RC238898 representing NM_001284223
 Red=Cloning site Green=Tags(s)

MASVFHYFLLVLFVLDTHAAQPFCLPGCTCSEESFGRTLQCTSVSLGKIPGNLSEEFKQVRIENSPLFEM
 PQGSFINMSTLEYLWLNFNINISVIHLGALEHLPELRELRLLEGKLCVWPWAFRATPLLRLVLDLKRKID
 ALPELALQFLVSLTYLDLSSNRLTVVSKSVFLNWPAYQKCRQPDCAEILSSLVVALHDNPWVDCRLRG
 LVQFVKSITLPVILVNSYLICQGPLSKAGQLFHETELSAKMPQISTPSANITIRAGQNVTLRCLAQASP
 SPSTIAWTYPLSMWREFDGLLGGKHLTPVLTSSSTGEDTALSELAIIPAAHLVDSGNYTCMASNSIGKSNLVI
 SLHVQPAQALHAPDSLIPSEGNAIDLRVVKQTVHGILLEWLAVADTSKEEWFLLYIASDEAFRKEVVH
 IGPGINTYAVDDLLPGTKYEACLSLEGQPPHQGCVAFTVGRDAGGLEAREHLLHVTVVLVAVPVG
 AYAWAAQGPCSCSKWVLRGCLHRRKAPSCTPAAPQSKDGSFREHPAVCDDGEGHIDTEGDKEKGGTEDNS

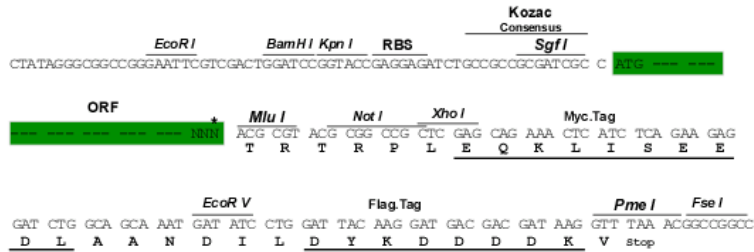
TRTRPLEQKLISEEDLAANDILDYKDDDDKV

Restriction Sites:

SgfI-MluI

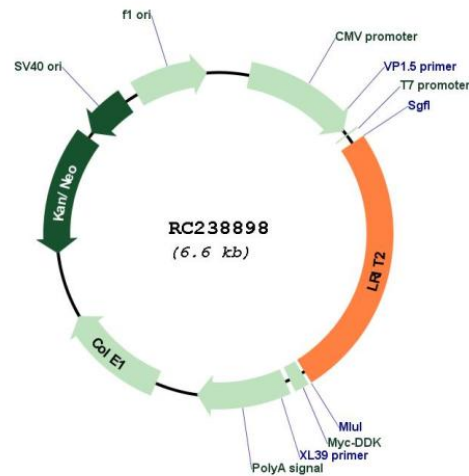
Cloning Scheme:

Cloning sites used for ORF Shuttling:



* The last codon before the Stop codon of the ORF

Plasmid Map:



ACCN:	NM_001284223
ORF Size:	1680 bp
OTI Disclaimer:	The molecular sequence of this clone aligns with the gene accession number as a point of reference only. However, individual transcript sequences of the same gene can differ through naturally occurring variations (e.g. polymorphisms), each with its own valid existence. This clone is substantially in agreement with the reference, but a complete review of all prevailing variants is recommended prior to use. More info
OTI Annotation:	This clone was engineered to express the complete ORF with an expression tag. Expression varies depending on the nature of the gene.
Components:	The ORF clone is ion-exchange column purified and shipped in a 2D barcoded Matrix tube containing 10ug of transfection-ready, dried plasmid DNA (reconstitute with 100 ul of water).
Reconstitution Method:	<ol style="list-style-type: none">1. Centrifuge at 5,000xg for 5min.2. Carefully open the tube and add 100ul of sterile water to dissolve the DNA.3. Close the tube and incubate for 10 minutes at room temperature.4. Briefly vortex the tube and then do a quick spin (less than 5000xg) to concentrate the liquid at the bottom.5. Store the suspended plasmid at -20°C. The DNA is stable for at least one year from date of shipping when stored at -20°C.
RefSeq:	NM_001284223.1 , NP_001271152.1
RefSeq Size:	3187 bp
RefSeq ORF:	1683 bp
Locus ID:	340745
UniProt ID:	A6NDA9
Cytogenetics:	10q23.1
Protein Families:	Transmembrane
MW:	61.6 kDa