

Product datasheet for **RC238881**

Dynamin 3 (DNM3) (NM_001278252) Human Tagged ORF Clone

Product data:

Product Type:	Expression Plasmids
Product Name:	Dynamin 3 (DNM3) (NM_001278252) Human Tagged ORF Clone
Tag:	Myc-DDK
Symbol:	DNM3
Synonyms:	Dyna III
Vector:	pCMV6-Entry (PS100001)
E. coli Selection:	Kanamycin (25 ug/mL)
Cell Selection:	Neomycin



[View online »](#)

ORF Nucleotide Sequence:

>RC238881 representing NM_001278252
 Red=Cloning site Blue=ORF Green=Tags(s)

TTTTGTAATACGACTCACTATAGGGCGGCCGGGAATTCGTCGACTGGATCCGGTACCGAGGAGATCTGCC
 GCC**GCGATCGCC**

ATGGGGAACCGGAGATGGAGGAGCTGATCCCCTGGTGAACCGTCTGCAGGACGCGTTTTCGGCGCTGG
 GACAGAGCTGCCTGCTGGAGCTGCCGCAGATCGCCGTGGTGGGCGGCCAGAGCGCCGCAAGAGCTCGGT
 GCTCGAGAACTTCGTGGGCAGGGACTTTCTCCCTCGAGGGTCGGGCATTGTAACAAGACGACCTCTTG
 CTGCAGCTTGTACTTCTAAAGCAGAATATGCCGAGTTTCTACATTGCAAAGGAAAGAAATTTACAGATT
 TTGATGAAGTTCGCTTGAAGCAGAAACAGATCGCGTACTGGAATGAATAAAGGCATTTCTCTC
 CATACCCATTAATTTACGAGTCTATTCCCACACGTGTTAAATCTAACCTTATTGATCTACCTGGAATA
 ACTAAAGTGCCTGTGGGAGATCAGCCACCAGATATCGAGTATCAGATCAGAGAAATGATTATGCAGTTCA
 TCACGAGGAGAACTGTCTGATTTTAGCTGTTACTCCAGCCAACACTGATCTTGCAAACCTCAGATGCGCT
 GAAGCTAGCTAAAGAAGTTGATCCTCAAGGTCTGAGAACCATTGGAGTTATCACCAAACCTGGACCTTATG
 GATGAAGGAACCGATGCCAGGGATGTTCTAGAGAACAACTGTTGCCCTTCGCAAGGGGTTACGTGGGGG
 TGGTAAACAGAAGCCAGAAGGACATAGATGGGAAGAAGGACATAAAGGCAGCCATGCTGGCAGAGAGGAA
 GTTTTTCTTTCCACCCGGCTTACAGACATATCGCTGACCGAATGGGAACCCACACCTGCAGAAGGTC
 CTTAATCAGCAACTTACCAACCACATTCGGGATACCCTACCAAACCTCAGGAACAACTACAGGGACAGT
 TGCTCTCCATAGAACATGAAGTAGAAGCCTACAAAAATTTCAAACCAGAAAGCCCAAGGAAGACCAA
 AGCATTGCTGCAGATGGTTCAGCAATTTGCTGTGGACTTTGAGAAGAGAATTGAAGGGTCAGGGGATCAA
 GTAGATACCCTGGAACCTCAGGTGGTCTAAAATCAATCGTATTTTTTCATGAACGCTTTCTTTTTGAGA
 TAGTAAAGATGGAGTTCAATGAGAAAGAATTGCGAAGAGAAATAGCTATGCAATCAAAAACATACATG
 TATCAGGACAGGGTTGTTTACTCCAGACATGGCATTGGAAGCGATAGTCAAGAAACAGATTGTAAGATTG
 AAAGGGCTTCTTGAAGAGTGTGGATCTGGTAAACAAGAATTAATCAACACTGTGAAGAAGTGTACCA
 AAAAACTGGCAAACCTTCCCAGACTCTGCGAGGAAACGAAAGGATTGTTGCTAACACATTCGTGAGCG
 AGAAGGGAAGCAAAAGGACCAGGTATTGCTATTGATTGACATTCAAGTCTTTACATCAACCAACCAT
 GAAGACTTCATTGGCTTCGCAAATGCTCAGCAGAGGAGCAGTCAAGTTCAAGAAAACCAAGTTGGAA
 ATCAGGTGATTCGCAAGGGTGGCTCACCATCAGCAACATTGGCATCATGAAAGGCGCTCGAAGGGATA
 CTGTTCTGCTTACTGCGGAAAGCTTGTCTGGTATAAAGATGATGAGAACATT

AG**GCGACCG**ACGCGTACGCGCCGCTCGAGCAGAACTCATCTCAGAAGAGGATCTGGCAGCAAATGATATCC
 TGGATTACAAGGATGACGACGATAAGGTTTAA

Protein Sequence:

>RC238881 representing NM_001278252
 Red=Cloning site Green=Tags(s)

MGNREMEELIPLVNRQLQDAFSALGQSCLELPIAVVGGQSAGKSSVLENFVGRDFLPRGSGIVTRRPLV
 LQLVTSKAEYAEFLHCKGKKFTDFDEVRLIEAETDRVTGMNKGISSIPINLRVYSPHVLNLTIDLPGI
 TKVPVGDQPPDIEYQIREMIMQFITRENCLILAVTPANTDLANSALKLAKEVDPQGLRTIGVITKLDLM
 DEGTDARDVLENKLLPLRRGYGVVNRSQKDIDGKKDIKAAMLAERKFFLSHPAYRHIADRMGTPHLQKV
 LNQQLTNHIRDTLPNFRNKLQGLLSIEHEVEAYKNFKPEDPTRKTKALLQMVQFQAVDFEKRIEGSGDQ
 VDTLELSSGAKINRIFHERFPFEIVKMEFNEKELRREISYAIKNIHGIRTGLFTPDMAFEAIVKKQIVKL
 KGPSLKSVDLVIQELINTVKKCTKLANFPRLCEETERIVANHIREREGKTKDQVLLLDIQVSYINTNH
 EDFIGFANAQRSSQVHKKTTVGNQVIRKGWLTISNIGIMKGGSKGYWFLTAESLSWYKDDENI

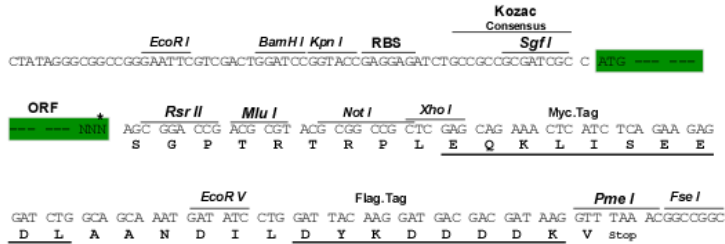
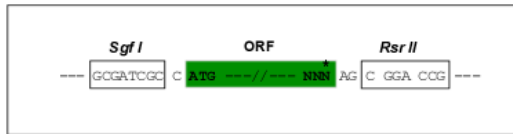
SGP**TRTRPLEQKLI**SEEDLAANDILDYKDDDDKV

Restriction Sites:

Sgfl-RsrII

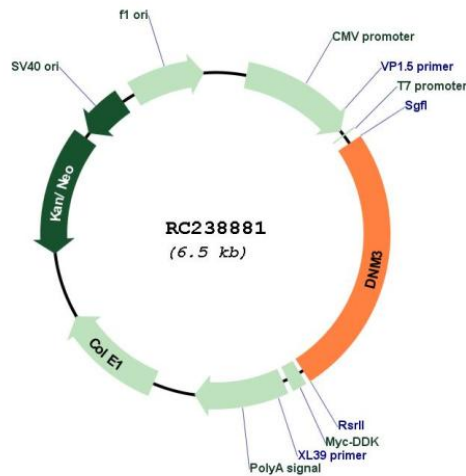
Cloning Scheme:

Cloning sites used for ORF Shuttling:



* The last codon before the Stop codon of the ORF

Plasmid Map:



ACCN:	NM_001278252
ORF Size:	1665 bp
OTI Disclaimer:	The molecular sequence of this clone aligns with the gene accession number as a point of reference only. However, individual transcript sequences of the same gene can differ through naturally occurring variations (e.g. polymorphisms), each with its own valid existence. This clone is substantially in agreement with the reference, but a complete review of all prevailing variants is recommended prior to use. More info
OTI Annotation:	This clone was engineered to express the complete ORF with an expression tag. Expression varies depending on the nature of the gene.
Components:	The ORF clone is ion-exchange column purified and shipped in a 2D barcoded Matrix tube containing 10ug of transfection-ready, dried plasmid DNA (reconstitute with 100 ul of water).
Reconstitution Method:	<ol style="list-style-type: none">1. Centrifuge at 5,000xg for 5min.2. Carefully open the tube and add 100ul of sterile water to dissolve the DNA.3. Close the tube and incubate for 10 minutes at room temperature.4. Briefly vortex the tube and then do a quick spin (less than 5000xg) to concentrate the liquid at the bottom.5. Store the suspended plasmid at -20°C. The DNA is stable for at least one year from date of shipping when stored at -20°C.
RefSeq:	NM_001278252.2
RefSeq Size:	2354 bp
RefSeq ORF:	1668 bp
Locus ID:	26052
UniProt ID:	Q9UQ16
Cytogenetics:	1q24.3
Protein Pathways:	Endocytosis, Fc gamma R-mediated phagocytosis
MW:	63.3 kDa
Gene Summary:	This gene encodes a member of a family of guanosine triphosphate (GTP)-binding proteins that associate with microtubules and are involved in vesicular transport. The encoded protein functions in the development of megakaryocytes. Alternative splicing results in multiple transcript variants. [provided by RefSeq, May 2013]