

Product datasheet for **RC238847**

EHD1 (NM_001282445) Human Tagged ORF Clone

Product data:

Product Type:	Expression Plasmids
Product Name:	EHD1 (NM_001282445) Human Tagged ORF Clone
Tag:	Myc-DDK
Symbol:	EHD1
Synonyms:	H-PAST; HPAST1; PAST; PAST1
Vector:	pCMV6-Entry (PS100001)
E. coli Selection:	Kanamycin (25 ug/mL)
Cell Selection:	Neomycin



[View online »](#)

ORF Nucleotide Sequence:

>RC238847 representing NM_001282445
 Red=Cloning site Blue=ORF Green=Tags(s)

TTTTGTAATACGACTCACTATAGGGCGGCCGGAATTCGTCGACTGGATCCGGTACCGAGGAGATCTGCC
 GCC**GCGATCGCC**

ATGGAACAGCCAGGAAGTGCAGCCAGCCCGTGTCCGGCAGTATGTTGAGCTGGGTGAGCAAGGATGCC
 GCCGCAAGAAGGAGCCGAGCTCTCCAGACGGTGGCCGAGGGCTGCGGCAGCTGTACGCGCAGAAGCT
 GCTACCCCTGGAGGAGCACTACCGCTTCCACGAGTTCCTACTCGCCCGCGTGGAGGACGCTGACTTCGAC
 AACAAAGCCTATGGTGCTCCTCGTGGGGCAGTACAGCACGGGAAGACCACCTTCATCCGACACCTGATCG
 AGCAGGACTTCCCGGGGATGCGCATCGGGCCGAGCCACCACCGACTCCTTCATCGCCGTATGCACGG
 CCCACTGAGGGCGTGGTCCGGGCAACGCGCTCGTGGTGGACCCGCGGCCCTTCCGCAAGCTCAAC
 GCGTTTGGCAACGCTTCTCAACAGGTTATGTGTGCCAGCTGCCAACCCCGTCTGGACAGCATCA
 GCATCATCGACACCCCGGGATCCTGTCTGGAGAGAAGCAGCGGATCAGCAGAGGCTATGACTTTGCAGC
 CGTCTGGAGTGGTTCGCGGAGCGTGTGGACCGCATCATCTGCTCTTCGACGCCACAAGCTGGACATC
 TCCGATGAGTTCTCGAAAGTGATCAAGGCTCTGAAGAACCATGAGGACAAGATCCGCGTGGTGTGAACA
 AGGCAGACCAGATCGAGACGCAGCAGCTGATGCGGGTGTACGGGGCCCTCATGTGGTCCCTGGGCAAGT
 CATCAACACCCCGAGGTGGTCAAGGCTCATATCGGCTCCTTCTGGTCCCACCCGCTCCTCATCCCCGAC
 AACCGCAAGCTCTTTGAGGCCGAGGAGCAGGACCTCTTCAAGGACATCCAGTCACTGCCCGAAACGCCG
 CCCTCAGGAAGCTCAATGACCTGATCAAGCGGGCAGCGCTGGCCAAGGTTACGCCTACATCATCAGTC
 CCTCAAGAAAGAGATGCCAATGTCTTTGGTAAAGAGAGCAAAAAGAAAGAGCTGGTGAACAACCTGGGA
 GAGATCTACCAGAAGATTGAGCGGAGCACCAGATCTCCCTGGGGACTTCCCGAGCCTCCGCAAGATGC
 AGGAATCTCTGCAGACCCAGGACTTCAGCAAGTTCAGGCGCTGAAGCCCAAGCTGCTGGACACGTTGGA
 TGACATGCTGGCCAACGACATCGCGCGGCTGATGGTGTGGTGGCGGAGGAGTCCCTGATGCCTTCC
 CAGGTGGTCAAGGGCGGCGCTTTGACGGCACCATGAACGGGCGCTTCGGGCACGGCTACGGCGAGGGGG
 CCGGCGAGGGCATCGACGACGTGGAGTGGTGGTGGGCAAGGACAAGCCACCTACGACGAGATCTTCTA
 CACGCTGTCCCCTGTCAACGGCAAGATCACGGGCGCAACGCCAAGAAGGAGATGGTGAAGTCCAAGCTC
 CCCAACACCGTGTAGGGAAGATCTGGAAGCTGGCCGACGTGGACAAGGACGGGTGCTGGACGACGAGG
 AGTTCGCGCTGGCCAACCACCTCATCAAGGTCAAGCTGGAGGGCCACGAGCTGCCCGCCGACCTGCCCC
 GCACCTGGTCCCGCCCTCAAGCGCAGACATGAG

AG**CGGACCG**ACGCGTACGCGCCGCTCGAGCAGAACTCATCTCAGAAGAGGATCTGGCAGCAAATGATATCC
 TGGATTACAAGGATGACGACGATAAGGTTTAA

Protein Sequence:

>RC238847 representing NM_001282445
 Red=Cloning site Green=Tags(s)

MEQPGTAASPVSMSFSWVSKDARRKKEPELFQTVAEGLRQLYAQKLLPLEEHYRFHEFHSPALEDADF
 NKPMVLLVGYSTGKTTFIRHLIEQDFPGMRIGPEPTTDSFIIVMHGPTGCVVPGNALVVDPRRPFKLN
 AFGNAFLNRFMCAQLPNPVLDSISIIDTPGILSGEKQRISRGYDFAAVLEWFAERVDRIILLFDAHKLDI
 SDEFSEVIKALKNHEDKIRVVLNKADQIETQQLMRVYGALMWSLGKIINTPEVVRVYIGSFWSHPLLIPD
 NRKLFEEEQDLFKDIQSLPRNAALRKLNDLIKRRARLAKVHAYIISLKKEMPNVFGKESKKKELVNNLG
 EIYQKIEREQIISPGDFPSLRKMQELLQTQDFSKFQALKPKLLDVTDDMLANDIARLMVMVRQEESLMPS
 QVYKGGAFDGMTNGPFGHGYGEGAGEGIDDVVVVVKDKPTYDEIFYTLSPVNGKITGANAKKEMVSKL
 PNTVLGKIWKLADVDKGLLDDEEFALANHLIKVKLEGHLPADLPHLVPPSKRRHE

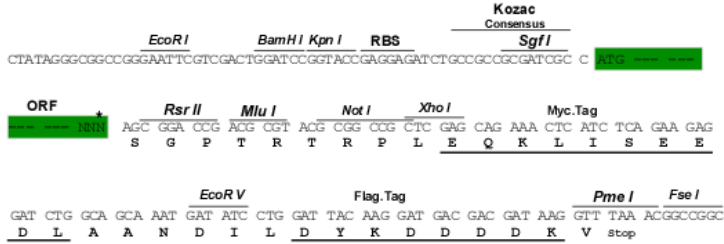
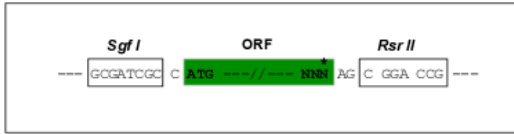
SGP**TRTRPLEQKLI**SEEDLAANDILDYKDDDDKV

Restriction Sites:

Sgfl-RsrII

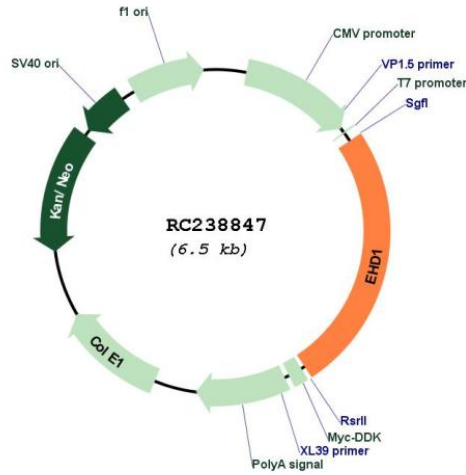
Cloning Scheme:

Cloning sites used for ORF Shuttling:



* The last codon before the Stop codon of the ORF

Plasmid Map:



ACCN:	NM_001282445
ORF Size:	1644 bp
OTI Disclaimer:	The molecular sequence of this clone aligns with the gene accession number as a point of reference only. However, individual transcript sequences of the same gene can differ through naturally occurring variations (e.g. polymorphisms), each with its own valid existence. This clone is substantially in agreement with the reference, but a complete review of all prevailing variants is recommended prior to use. More info
OTI Annotation:	This clone was engineered to express the complete ORF with an expression tag. Expression varies depending on the nature of the gene.
Components:	The ORF clone is ion-exchange column purified and shipped in a 2D barcoded Matrix tube containing 10ug of transfection-ready, dried plasmid DNA (reconstitute with 100 ul of water).
Reconstitution Method:	<ol style="list-style-type: none">1. Centrifuge at 5,000xg for 5min.2. Carefully open the tube and add 100ul of sterile water to dissolve the DNA.3. Close the tube and incubate for 10 minutes at room temperature.4. Briefly vortex the tube and then do a quick spin (less than 5000xg) to concentrate the liquid at the bottom.5. Store the suspended plasmid at -20°C. The DNA is stable for at least one year from date of shipping when stored at -20°C.
RefSeq:	NM_001282445.1 , NP_001269374.1
RefSeq Size:	3354 bp
RefSeq ORF:	1647 bp
Locus ID:	10938
UniProt ID:	Q9H4M9
Cytogenetics:	11q13.1
Protein Families:	Druggable Genome
Protein Pathways:	Endocytosis
MW:	62.4 kDa
Gene Summary:	This gene belongs to a highly conserved gene family encoding EPS15 homology (EH) domain-containing proteins. The protein-binding EH domain was first noted in EPS15, a substrate for the epidermal growth factor receptor. The EH domain has been shown to be an important motif in proteins involved in protein-protein interactions and in intracellular sorting. The protein encoded by this gene is thought to play a role in the endocytosis of IGF1 receptors. Alternatively spliced transcript variants have been found for this gene. [provided by RefSeq, Sep 2013]