

## Product datasheet for **RC238837**

### **IRX4 (NM\_001278635) Human Tagged ORF Clone**

#### **Product data:**

Product Type:	Expression Plasmids
Product Name:	IRX4 (NM_001278635) Human Tagged ORF Clone
Tag:	Myc-DDK
Symbol:	IRX4
Synonyms:	IRXA3
Vector:	pCMV6-Entry (PS100001)
E. coli Selection:	Kanamycin (25 ug/mL)
Cell Selection:	Neomycin



[View online »](#)

**ORF Nucleotide Sequence:**

>RC238837 representing NM\_001278635  
 Red=Cloning site Blue=ORF Green=Tags(s)

TTTTGTAATACGACTCACTATAGGGCGGCCGGAATTCGTCGACTGGATCCGGTACCGAGGAGATCTGCC  
 GCC**GCGATCGCC**

ATGTCCTACCCGAGTTTGGATACCCCTACTCCTCGGCTCCCCAGTTCTTGTATGGCCACCAACTCCCTGA  
 GCAGTGTCTGCGAGTCCGGAGGCCGCACGCTGGCGGACTCCGGGCCCGCCGCTCGGCCACAGGCGCCGGT  
 CTAAGTGTCTACGAGAGCCGGCTGTGGCCACCGCGCCACGAGCTCAACTCGGCCCGCGCGCTG  
 GGCGTCTATGGGGTCCCTATGGCGGATCGCAGGGCTATGGCAACTACGTGACCTACGGCTCGGAGGCGT  
 CCGCCTTCTACTCGTGAACAGCTTTGATTCCAAGGATGGTTCGGGATCTGCGCATGGGGCCTGGCACC  
 AGCCGCTGCCCTACTACCTTACGAGCCAGCTCTGGGCCAGTACCCCTATGACAGGATCAAACGGCTA  
 GGCGGTATCCCCATAAAGGAATTGGCTGGACCTCTCTGGCTTGGGAAGGAGCCAGGCTCCCTGTATG  
 GAACCATGGACAGCGGCACGCGGCGCAAGAAGCCACGCGGAGACCACCAGCACGCTCAAGGCCTGGCT  
 GCAGGAGCACCGAAGAACCCTACCCACCAAGGGCGAGAAGATCATGTGGCCATCATACCAAGATG  
 ACCCTCACACAGTCTCCACCTGGTTCGCCAACGCGCGCCGCGCCTCAAGAAGGAGAACAAGATGACGT  
 GGCCGCCGCGGAACAAGTGCAGCAGAGAGAAGCGCCCTACGCGGAGGGCGAGGAGGAGGGGGCGA  
 GGAGGAGGCGCGGAGGAGCCCTCAAGAGCTCCAAGAAGCAGAGCCCGTGGGCAAAGAGGAGAAGGAG  
 CTGGAGCTTAGTGACTTGGACGACTTCGACCCGCTGGAAGCAGAGCCCGCGCGTGCAGCTGAAGCCGC  
 CCTTCCACTCCCTGGACGGCGTCTGGAGCGCTCCCCGCCGCGCCGACGGCCCGTCAAGGAGGCCTC  
 AGGCGCGCTCCGATGTCTCTGGCCGCGGTGGCGGAGCTGTCTGGACGAGGACTGGAGAGGGCCCGG  
 AGCTGTCTCCGACGCGCGCGCCGGCCGGAGCCACTGCCGGCGCAGAGGGCGCCCTCAGGTCTGCG  
 AGGCCAAGCTGGGTTTGTGCCGCGGGGCGTGGCAGGCTGGAGGCTAAGCCGCGCATCTGGTCCCT  
 GGCCACACAGCCACCGCGCGCCGCCACCTCCCTGAGCCAGACTGAGTTTCCGTCTGTCATG  
 CTAAGCGCAAGTCCCGCGCCCTGCGGCTGTGTCTCCGCGCCGCGCACGTCCCGCTGTGGCC  
 TCCCCACTCTGGCGCCCTGGACAGGCACCAGGACTCCCCGTAACAGTCTCAGAACTGGGTGGACGG  
 GGTCTTCCACGACCCATCCTCAGGCACGACTTTGAACCAGGCTGGGCCACCGCCAAGGGCGCCCTC  
 CTGGACCCCGGGCTCTGGGACGCTCGCTGGGGCGGGCGCAACGTGCTGACTGCACCCCTGGCCCGG  
 CCTTCCGCTGCCGTGCCCCAGGACGCCCCAGCTGCAGGCGCCGCGAGGAGTGTCTGCCCTGCCCAA  
 GGCCGGCGGCAAACCTTCTGCGCC

**ACGCGT**ACGCGGCCGCTCGAGCAGAAACTCATCTCAGAAGAGGATCTGGCAGCAAATGATATCCTGGATT  
 ACAAGGATGACGACGATAAGGTTTAA

**Protein Sequence:**

>RC238837 representing NM\_001278635  
 Red=Cloning site Green=Tags(s)

MSYPQFGYPYSSAPQFLMATNSLSTCCESGGRTLADSGPAASAQAPVYCPVYESRLLATARHELNSAAAL  
 GYVGGPYGGSQGYGNVVTYGEASAFYSLNSFDSKDGSGSAHGLAPAAAAYYPYEPALGQYPYDRIKRL  
 GGHPHKIGLDL SGLGRSPGSL YGTMDSGTRRNATRETTSTLKAWLQEHKPNPYPTKGEIIMLAITKM  
 TLTQVSTWFANARRRRLKKNKMTWPPRNKCADEKRPYAEGE EEEEEAREEPLKSSKNAEPVKGEEKE  
 LELSDLDDFDPLEAEPACELKPPFHSLDGGLERVPAAPDGPVKEASGALRMSLAAGGGAALDEDLERAR  
 SCLRSAAGPEPLPGAEGGPQVCEAKLGFVPAGASAGLEAKPRIWLSAHTATAAAAAATSLSQTEFPSCM  
 LKRQGPAAAPA VSSAPATSPSVALPHSGALDRHQDSPVTSLRNWVDGVFHDPILRHSTLNQAWATAKGA  
 LDPGPLGRSLGAGANVLTAPLARAFAVPPAQDAPAAAGAARELLALPKAGGKPFCA

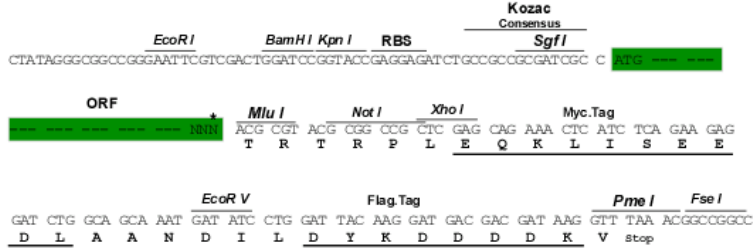
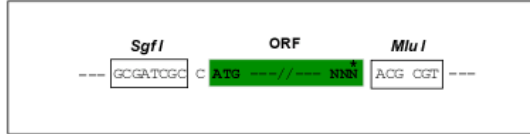
**TR**TRPLEQKLISEEDLAANDILDYKDDDDKV

**Restriction Sites:**

Sgfl-MluI

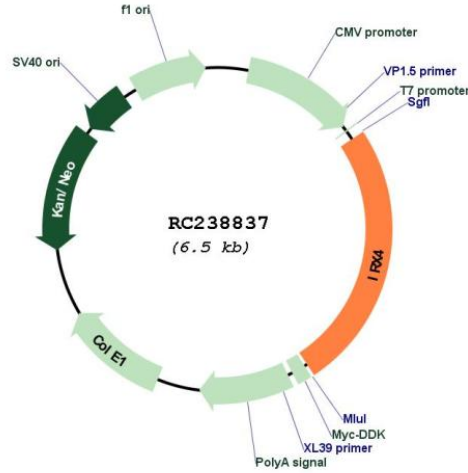
**Cloning Scheme:**

Cloning sites used for ORF Shutting:



\* The last codon before the Stop codon of the ORF

**Plasmid Map:**



<b>ACCN:</b>	NM_001278635
<b>ORF Size:</b>	1635 bp
<b>OTI Disclaimer:</b>	The molecular sequence of this clone aligns with the gene accession number as a point of reference only. However, individual transcript sequences of the same gene can differ through naturally occurring variations (e.g. polymorphisms), each with its own valid existence. This clone is substantially in agreement with the reference, but a complete review of all prevailing variants is recommended prior to use. <a href="#">More info</a>
<b>OTI Annotation:</b>	This clone was engineered to express the complete ORF with an expression tag. Expression varies depending on the nature of the gene.
<b>Components:</b>	The ORF clone is ion-exchange column purified and shipped in a 2D barcoded Matrix tube containing 10ug of transfection-ready, dried plasmid DNA (reconstitute with 100 ul of water).
<b>Reconstitution Method:</b>	<ol style="list-style-type: none"><li>1. Centrifuge at 5,000xg for 5min.</li><li>2. Carefully open the tube and add 100ul of sterile water to dissolve the DNA.</li><li>3. Close the tube and incubate for 10 minutes at room temperature.</li><li>4. Briefly vortex the tube and then do a quick spin (less than 5000xg) to concentrate the liquid at the bottom.</li><li>5. Store the suspended plasmid at -20°C. The DNA is stable for at least one year from date of shipping when stored at -20°C.</li></ol>
<b>RefSeq:</b>	<a href="#">NM_001278635.1</a> , <a href="#">NP_001265564.1</a>
<b>RefSeq Size:</b>	2411 bp
<b>RefSeq ORF:</b>	1638 bp
<b>Locus ID:</b>	50805
<b>UniProt ID:</b>	<a href="#">P78413</a>
<b>Cytogenetics:</b>	5p15.33
<b>MW:</b>	57.5 kDa
<b>Gene Summary:</b>	Likely to be an important mediator of ventricular differentiation during cardiac development. [UniProtKB/Swiss-Prot Function]