

Product datasheet for **RC238836**

IRX4 (NM_001278633) Human Tagged ORF Clone

Product data:

Product Type:	Expression Plasmids
Product Name:	IRX4 (NM_001278633) Human Tagged ORF Clone
Tag:	Myc-DDK
Symbol:	IRX4
Synonyms:	IRXA3
Vector:	pCMV6-Entry (PS100001)
E. coli Selection:	Kanamycin (25 ug/mL)
Cell Selection:	Neomycin



[View online »](#)

ORF Nucleotide Sequence:

>RC238836 representing NM_001278633
 Red=Cloning site Blue=ORF Green=Tags(s)

TTTTGTAATACGACTCACTATAGGGCGGCCGGAATTCGTCGACTGGATCCGGTACCGAGGAGATCTGCC
 GCC**CGGATCGCC**

ATGTCCTACCCGAGTTTGGATACCCCTACTCCTCGGCTCCCCAGTTCTTGATGGCCACCAACTCCCTGA
 GCAGTGTGCGAGTCCGAGGCCGCACGCTGGCGGACTCCGGGCCCGCCGCTCGGCCAGGCGCCGGT
 CTAAGTCCCGGTCTACGAGAGCCGGCTGCTGGCCACCGCGGCCACGAGCTCAACTCGGCCCGCGCGCTG
 GGCGTCTATGGGGTCCCTATGGCGGATCGCAGGGCTATGGCAACTACGTGACCTACGGCTCGGAGGCGT
 CCGCCTTCTACTCGCTGAACAGCTTTGATTCCAAGGATGGTTCGGGATCTGCGCATGGGGCCTGGCACC
 AGCCGCTGCCCTACTACCTTACGAGCCAGCTCTGGGCCAGTACCCCTATGACAGGATCAAACGGCTA
 GGCGGTATCCCCATAAAGGAATTGGCTGGACCTCTCTGGCTTGGGAAGGAGCCAGGCTCCCTGTATG
 GAACCATGGACAGCGGCACGCGCGCAAGAAGCCACGCGGAGACCACCAGCACGCTCAAGGCCTGGCT
 GCAGGAGCACCGAAGAACCCTACCCACCAAGGGCGAGAAGATCATGTGGCCATCATACCAAGATG
 ACCCTCACACAGTCTCCACCTGGTTCGCCAACGCGCGCCGCGCCTCAAGAAGGAGAACAAGATGACGT
 GGCCGCCGCGGAACAAGTGGCAGACGAGAAGCGGCCCTACGCGAGGGCGAGGAGGAGGGGGGCGA
 GGAGGAGCGCGGGAGGAGCCCTCAAGAGCTCCAAGAAGCAGAGCCCGTGGGCAAAGAGGAGAAGGAG
 CTGGAGCTTAGTGACTTGGACGACTTCCGCCGCTGGAAGCAGAGCCCGCGCGTGGCAGCTGAAGCCGC
 CCTTCCACTCCCTGGACGGCGTCTGGAGCGCTCCCCGCCGCGCCGACGGCCCGTCAAGGAGCCCTC
 AGGCGCGCTCCGATGTCTCTGGCCGCGGTGGCGGAGCTGTCTGGACGAGGACTGGAGAGGGCCCGG
 AGCTGTCTCCGACGCGCGCGCGCGGCGGAGCCACTGCCGGCGCAGAGGGCGGCCCTCAGGTCTGGC
 AGGCCAAGCTGGGTTTTGTGCCGCGGGGCGTGGCAGGCTGGAGGCTAAGCCGCGCATCTGGTCCCT
 GGCCACACAGCCACCGCGCGCGCGCCGCCACCTCCCTGAGCCAGACTGAGTTTCCGTCGTGCATG
 CTAAGCGCCAAGTCCCGCGGCCCTGCGGCTGTGTCTCCGCGCCCGCACGTCCTCGTGGCC
 TCCCCACTCTGGCGCCCTGGACAGGACCAGGACTCCCCGTAACCAGTCTCAGAACTGGGTGGACGG
 GGTCTTCCACGACCCCATCTCAGGCACAGCACTTTGAACCAGGCTGGGCCACCGCCAAGGGCGCCCTC
 CTGACCCCGGGCCTCTGGGACGCTCGCTGGGGCGGGCGCAACGTGCTGACTGCACCCCTGGCCCGG
 CCTTCCGCTGCCGTGCCCCAGGACGCCCCAGCTGCAGGCGCCGAGGAGCTGCTCGCCCTGCCCAA
 GGCCGGCGGCAAACCTTCTGCGCC

ACGCGTACGCGGCCGCTCGAGCAGAAACTCATCTCAGAAGAGGATCTGGCAGCAAATGATATCTGGATT
 ACAAGGATGACGACGATAAGGTTTAA

Protein Sequence:

>RC238836 representing NM_001278633
 Red=Cloning site Green=Tags(s)

MSYPQFGYPYSSAPQFLMATNSLSTCCESGGRTLADSGPAASAQAPVYCPVYESRLLATARHELNSAAAL
 GYVGGPYGGSQGYGNVYTYGSEASAFYSLNSFDSKDGSGSAHGLAPAAAAYYPYEPALGQYPYDRIKRL
 GGHPHKIGLDL SGLGRSPGSL YGTMDSGTRRNATRETTSTLKAWLQEHKKNPYPTKGEIIMLAITKM
 TLTQVSTWFANARRRRLKKNKMTWPPRNKCADEKRPYAEGE EEEEGEEAREEPLKSSKNAEPVKGEEKE
 LELSDLDDFDPLEAEPACELKPPFHSLDGGLERVPAAPDGPVKEASGALRMSLAAGGGAALDEDLERAR
 SCLRSAAGPEPLPGAEGGPQVCEAKLGFVPAGASAGLEAKPRIWLSAHTATAAAAAATSLSQTEFPSCM
 LKRQGPAAAPAVSSAPATSPSVALPHSGALDRHQDSPVTSLRNWDGVFHDPILRHSTLNQAWATAKGA
 LDPGPLGRSLGAGANVLTAPLARAFPPAVPDAPAAGAARELLALPKAGGKPFCA

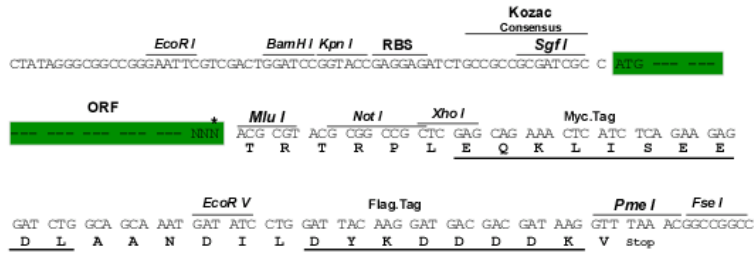
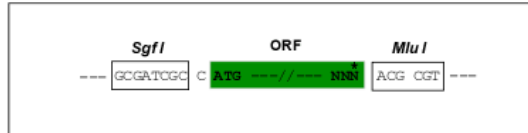
TRTRPLEQKLISEEDLAANDILDYKDDDDKV

Restriction Sites:

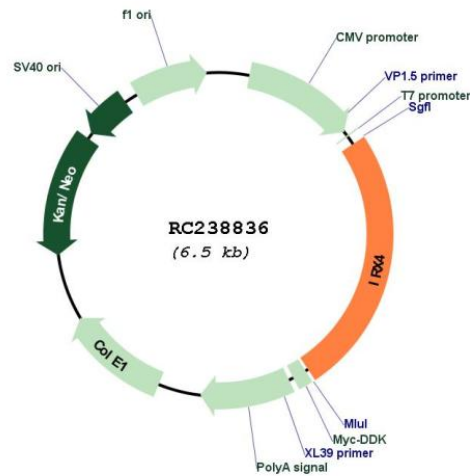
Sgfl-MluI

Cloning Scheme:

Cloning sites used for ORF Shutting:



* The last codon before the Stop codon of the ORF

Plasmid Map:


ACCN:	NM_001278633
ORF Size:	1635 bp
OTI Disclaimer:	The molecular sequence of this clone aligns with the gene accession number as a point of reference only. However, individual transcript sequences of the same gene can differ through naturally occurring variations (e.g. polymorphisms), each with its own valid existence. This clone is substantially in agreement with the reference, but a complete review of all prevailing variants is recommended prior to use. More info
OTI Annotation:	This clone was engineered to express the complete ORF with an expression tag. Expression varies depending on the nature of the gene.
Components:	The ORF clone is ion-exchange column purified and shipped in a 2D barcoded Matrix tube containing 10ug of transfection-ready, dried plasmid DNA (reconstitute with 100 ul of water).
Reconstitution Method:	<ol style="list-style-type: none">1. Centrifuge at 5,000xg for 5min.2. Carefully open the tube and add 100ul of sterile water to dissolve the DNA.3. Close the tube and incubate for 10 minutes at room temperature.4. Briefly vortex the tube and then do a quick spin (less than 5000xg) to concentrate the liquid at the bottom.5. Store the suspended plasmid at -20°C. The DNA is stable for at least one year from date of shipping when stored at -20°C.
RefSeq:	NM_001278633.1 , NP_001265562.1
RefSeq Size:	2406 bp
RefSeq ORF:	1638 bp
Locus ID:	50805
UniProt ID:	P78413
Cytogenetics:	5p15.33
MW:	57.5 kDa
Gene Summary:	Likely to be an important mediator of ventricular differentiation during cardiac development. [UniProtKB/Swiss-Prot Function]