

Product datasheet for **RC238795**

ZNF34 (NM_001286769) Human Tagged ORF Clone

Product data:

Product Type:	Expression Plasmids
Product Name:	ZNF34 (NM_001286769) Human Tagged ORF Clone
Tag:	Myc-DDK
Symbol:	ZNF34
Synonyms:	KOX32
Vector:	pCMV6-Entry (PS100001)
E. coli Selection:	Kanamycin (25 ug/mL)
Cell Selection:	Neomycin



[View online »](#)

ORF Nucleotide Sequence:

>RC238795 representing NM_001286769
 Red=Cloning site Blue=ORF Green=Tags(s)

TTTTGTAATACGACTCACTATAGGGCGGCCGGAATTCGTCGACTGGATCCGGTACCGAGGAGATCTGCC
 GCC**CGGATCGCC**

ATGGCGCCTTGTTCCTGTCTGCCACCCAGGCCGAGGTGACCTTCGAGGACGTGGCTGTGTACCTCT
 CCCGGGAGGAATGGGGCCGCTGGGCCCTGCTCAGAGGGCCCTACAGGGACGTGATGCTGGAGACCTA
 CGGAACCTAGTCTCACTGGGAGTAGGACCTGCAGGCCCAAGCCTGGAGTGATCTCGCAGTTGGAGCGA
 GGGGATGAGCCCTGGGTCTGGATGTTCAAGGCACCTCTGGAAAAGACACCTGAGAGTCAACAGCCAG
 CTCTTGGGACCAGAAGTGAAGTACAGGAGTTGACTTCACAGGAGACATTTGGTGAGGAAGATCCCCAGGG
 ATCTGAGCCAGTAGAAGCCTGTGACCACATCAGTAAGTCAGAGGGAGCCTGGAAAAGCTAGTGGAGCAG
 AGAGGCCCGAGGCAGTCACTGACCAACGGGGAGAGCAGCAGGGAGTCTGGGGAAACCTCAGTTGTC
 TGCAAGACCTGTTCTGATCAGAGACCTCACAATGTGATATATGTGAGCAAAGTTTGAACAGAGATC
 ATATCTCAACAACCATAAGCGTGTACACAGGTCAAAAAACAAATACAGTTTCGTAACCTCTGGGAAATC
 TTCAGTGCAAACCTTAGTTGTTAAAGAAGATCAGAAAATTCCTACTGGGAAAAAATTCATTATTGCAAGT
 ACTGTGGGAAAACATTCAGGTACAGTGCCAACCTTGTCAAGCATCAGCGCTTCACACTGAAGAGAAGCC
 CTACAAATGTGATGAGTGTGGAAAAGCCTTCAGCCAGAGCTGCGAGTTTCATCAATCACCGAAGGATGCAC
 TCAGGAGAGATTCCTACCGGTGTGACGAGTGTGGGAAGACATTCACCCGGAGGCCAACCTCATGAAGC
 ACCAGAGGATTCACACTGGGAGAAAACCTACAAGTGTGGGGAGTGTGGGAAGCACTTTAGCGCCTACTC
 TTCCCTGATTTATCACCAGAGAATCCACACCGGAGAGAAAACCTATAAATGTAATGACTGCGGAAAAGCC
 TTCAGTGATGGCTCAATCCTTATCCGACATCGTCGGACTCACACCGGAGAGAAGCCATTTGAGTGAAGG
 AATGTGGCAAAGGCTTTACACAAAGTTTAACTTATCCAACATCAGAGAATTCACACTGGAGAGAACC
 CTATAAATGTAATGAATGTGAGAAAAGCTTTCATTCAAAAAACCAACTCGTGAACATCAGAGAAGCCAC
 ACTGGAGAGAAGCCATGAATGCAATGACTGTGGCAAAGTTTTAGCCAAAGCACACACCTCATCCAGC
 ACCAGAGAATCCACACAGGAGAGAAGCCCTACAAGTGCAGCGAGTGTGGGAAGGCCTTCACAACAGTTC
 CAGACTCATCCACCACAGAGGCTGCACCACGGAGAGAAAACCTACAGATGCAGCGATTGCAAGAAAAGCC
 TTCAGCCAGAGCAGTACTTGATTCAGCACCGGAGGATCCACACCGGGGAGAAGCCCTACAAGTGCAGCG
 AGTGTGGGAAGGCCTTCCGGCACAGTTCCAACATGTGTCAGCATCAGCGGATTCACCTCCGGGAGGACTT
 CTCCATG

ACGCGTACGCGGCCGCTCGAGCAGAAACTCATCTCAGAAGAGGATCTGGCAGCAAATGATATCTGGATT
 ACAAGGATGACGACGATAAGGTTTAA

Protein Sequence:

>RC238795 representing NM_001286769
 Red=Cloning site Green=Tags(s)

MAALFLSAPPQAEVTFEDVAVYLSREEWRLGPAQRGLYRDVMLETYGNLVSLVGVGPAGPKPGVISQLER
 GDEPWVLDVQGTSGKEHLRVNSPALGTRTEYKELTSQETFGEDPQGSEPVACDHIKSEGSLEKLVQER
 RGPRAVLTNGESSRESGNLRLLSRPVPDQRPKCDICEQSFEQRSYLNHKKRVHRSKTNTVRNSGEI
 FSNLVVKEDQKIPGKLLHYCSYCGKTFRYSANLVKHQRLHTEEKPKCDECGKAFSQSEFINHRRMH
 SGEIPYRCDECGKTFTRPNLMKHQRIHTGEKPYKCGECGKHFSAYSYLIYHRIHTGEKPYKCNDGKA
 FSDGSILIRHRRHTGEKPFECKECGKGFQSSNLIQHQRHTGEKPYKCNECEKAFIQKTKLVEHQRS
 TGEKPYECNDGKVFQSSTHLIQHQRHTGEKPYKCECGKAFHNSRLIHHQRLHHGEKPYRCSCKKA
 FSQSTYLIQHRRHTGEKPYKCECGKAFRHSNMCQHQRHILREDFSM

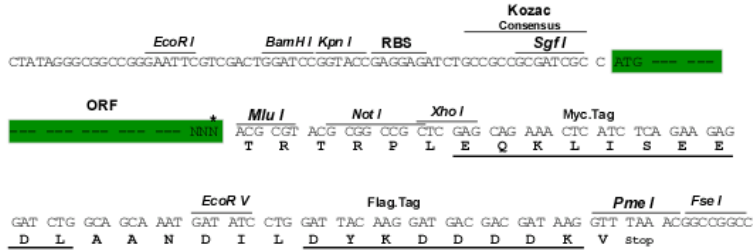
TRTRPLEQKLISEEDLAANDILDYKDDDDKV

Restriction Sites:

Sgfl-MluI

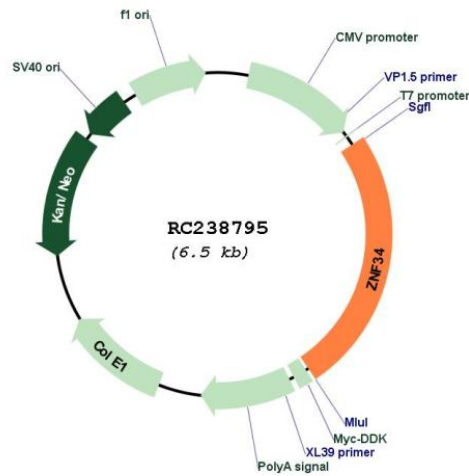
Cloning Scheme:

Cloning sites used for ORF Shutting:



* The last codon before the Stop codon of the ORF

Plasmid Map:



ACCN:	NM_001286769
ORF Size:	1617 bp
OTI Disclaimer:	The molecular sequence of this clone aligns with the gene accession number as a point of reference only. However, individual transcript sequences of the same gene can differ through naturally occurring variations (e.g. polymorphisms), each with its own valid existence. This clone is substantially in agreement with the reference, but a complete review of all prevailing variants is recommended prior to use. More info
OTI Annotation:	This clone was engineered to express the complete ORF with an expression tag. Expression varies depending on the nature of the gene.
Components:	The ORF clone is ion-exchange column purified and shipped in a 2D barcoded Matrix tube containing 10ug of transfection-ready, dried plasmid DNA (reconstitute with 100 ul of water).
Reconstitution Method:	<ol style="list-style-type: none">1. Centrifuge at 5,000xg for 5min.2. Carefully open the tube and add 100ul of sterile water to dissolve the DNA.3. Close the tube and incubate for 10 minutes at room temperature.4. Briefly vortex the tube and then do a quick spin (less than 5000xg) to concentrate the liquid at the bottom.5. Store the suspended plasmid at -20°C. The DNA is stable for at least one year from date of shipping when stored at -20°C.
RefSeq:	NM_001286769.2
RefSeq Size:	2845 bp
RefSeq ORF:	1620 bp
Locus ID:	80778
UniProt ID:	Q8IZ26
Cytogenetics:	8q24.3
Protein Families:	Transcription Factors
MW:	62.2 kDa
Gene Summary:	May be involved in transcriptional regulation.[UniProtKB/Swiss-Prot Function]