

Product datasheet for **RC238783**

IGF2BP2 (NM_001291873) Human Tagged ORF Clone

Product data:

Product Type:	Expression Plasmids
Product Name:	IGF2BP2 (NM_001291873) Human Tagged ORF Clone
Tag:	Myc-DDK
Symbol:	IGF2BP2
Synonyms:	IMP-2; IMP2; VICKZ2
Vector:	pCMV6-Entry (PS100001)
E. coli Selection:	Kanamycin (25 ug/mL)
Cell Selection:	Neomycin



[View online »](#)

ORF Nucleotide Sequence:

>RC238783 representing NM_001291873
 Red=Cloning site Blue=ORF Green=Tags(s)

TTTTGTAATACGACTCACTATAGGGCGGCCGGAATTCGTCGACTGGATCCGGTACCGAGGAGATCTGCC
 GCC**CGCATCGCC**

ATGTTCTCATGTCCTGGACACTACCACGTTGATGGCTTTCTAAATCCAGGGAGCAGGAAAATTCAGATTC
 GAAACATCCCTCCTCACCTGCAGTGGGAGGTGTTGGATGGACTTTTGGCTCAATATGGGACAGTGGAGAA
 TGTGGAACAAGTCAACACAGACACAGAAACCGCGTTGTCAACGTCACATATGCAACAAGAGAAGAGCA
 AAAATAGCCATGGAGAAGCTAAGCGGGCATCAGTTTGAAGAACTACTCCTTCAAGATTTCTACATCCCGG
 ATGAAGAGGTGAGCTCCCTTCGCCCTCAGCGAGCCAGCGTGGGACCCTTCCCGGGAGCAAGG
 CCACGCCCTGGGGCACTTCTCAGGCCAGACAGATTGATTTCCCGCTGCGGATCCTGGTCCCCACCCAG
 TTTGTTGGTGCCATCATCGAAAGGAGGGCTTGACCATAAAGAACATCACTAAGCAGACCCAGTCCCGGG
 TAGATATCCATAGAAAAGAGAACTCTGGAGCTGCAGAGAAGCCTGTCACCATCCATGCCACCCAGAGGG
 GACTTCTGAAGCATGCCGCATGATTCTTGAATCATGCAGAAAGAGGCAGATGAGACAAACTAGCCGAA
 GAGATTCTCTGAAAATCTTGGCACACAATGGCTTGGTTGGAAGACTGATTGGAAAAGAAGGCAGAAATT
 TGAAGAAAATTGAACATGAAACAGGGACCAAGATAACAATCTCATCTTTCAGGATTTGAGCATATACAA
 CCCGAAAAGAACCATCACTGTGAAGGCCACAGTTGAGGCCTGTGCCAGTCTGAGATAGAGATTATGAAG
 AAGCTGCGTGAGGCCCTTGAAGATGATGCTGGCTGTTAACCAACAAGCCAATCTGATCCCAGGGTTGA
 ACCTCAGCGCACTTGGCATCTTTTCAACAGGACTGTCCGTGCTATCTCCACCAGCAGGGCCCCGCGGAGC
 TCCCCCGCTGCCCTACCACCCCTTCACTACCCACTCCGGTACTTCTCCAGCCTGTACCCCATCAC
 CAGTTTGGCCGTTCCCGCATCACTCTTATCCAGAGCAGGAGATTGTAATCTTTCATCCCAACCC
 AGGTGTGGGCGCCATCATCGGGAAGAAGGGGCCACACATCAAACAGCTGGCGAGATTCCGCCGAGCCTC
 TATCAAGATTGCCCTGCGGAAGGCCAGAGCTCAGCGAAAGGATGGTCATCATACCGGGCCACCGGAA
 GCCCAGTTCAAGGCCAGGGACGGATCTTTGGGAAACTGAAAGAGGAAAATTCTTTAACCCAAAAGAG
 AAGTGAAGCTGGAAGCGCATATCAGAGTGCCCTTCCACAGCTGGCCGGGTGATTGGCAAAGGTGGCAA
 GACCGTGAACGAACTGCAGAACTTAACAGTGCAGAAGTATCGTGCCTCGTGACCAAACGCCAGATGAA
 AATGAGGAAGTGATCGTCAGAATTATCGGGCACTTCTTTGCTAGCCAGACTGCACAGCGCAAGATCAGGG
 AAATTGTACAACAGGTGAAGCAGCAGGAGCAGAAATACCTCAGGGAGTCGCCTCACAGCGCAGCAA

ACGCGTACGCGGCCGCTCGAGCAGAAACTCATCTCAGAAGAGGATCTGGCAGCAAATGATATCTGGATT
 ACAAGGATGACGACGATAAGGTTTAA

Protein Sequence:

>RC238783 representing NM_001291873
 Red=Cloning site Green=Tags(s)

MFSCPGHYHVDGFLNPGSRKIQRNIPPHLQWEVLDGLLAQYGTVENVEQVNTDTETAVVNVYATREEA
 KIAMEKLSGHQFENYSFKISYIPDEEVSSPSPQRAQRGDHSSREQGHAPGGTSQARQIDFPLRILVPTQ
 FVGAIIGKEGLTIKNITKQTQSRVDIHRKENSAAEKPVTIHATPEGTSEACRMILEIMQKEADETKLAE
 EIPLKILAHNGLVGRLIGKEGRNLKIEHETGKITISSLQDL SIYNPERTITVKGTVEACASAEIEIMK
 KLREAFENDMLAVNQANLIPGLNLSALGIFSTGLSVLSPAGPRGAPPAAPYHPFTTHSGYFSSLYPHH
 QFGPFPHHHSYPEQEI VNLFIPTQAVGAIIGKGAHIKQLARFAGASIKIAPAEGPDVSRMVIITGPPE
 AQFKAQGRIFGKLKEENFFNPKEEVKLEAHIRVPSSTAGRIVIGKGGKTVNELQNL TSAEIVPRDQTPDE
 NEEVIVRIIGHFFASQTAQRKIREIVQVKQEQKYPQGVASQRSK

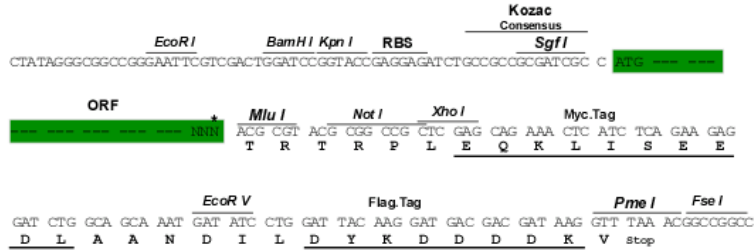
TRTRPLEQKLI SEEDLAANDILDYKDDDDKV

Restriction Sites:

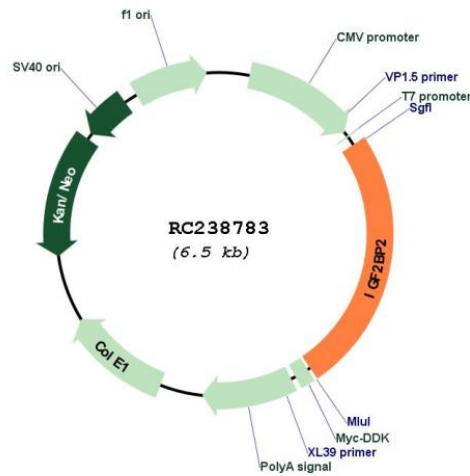
Sgfl-MluI

Cloning Scheme:

Cloning sites used for ORF Shuttling:



* The last codon before the Stop codon of the ORF

Plasmid Map:


ACCN:	NM_001291873
ORF Size:	1608 bp
OTI Disclaimer:	The molecular sequence of this clone aligns with the gene accession number as a point of reference only. However, individual transcript sequences of the same gene can differ through naturally occurring variations (e.g. polymorphisms), each with its own valid existence. This clone is substantially in agreement with the reference, but a complete review of all prevailing variants is recommended prior to use. More info
OTI Annotation:	This clone was engineered to express the complete ORF with an expression tag. Expression varies depending on the nature of the gene.
Components:	The ORF clone is ion-exchange column purified and shipped in a 2D barcoded Matrix tube containing 10ug of transfection-ready, dried plasmid DNA (reconstitute with 100 ul of water).
Reconstitution Method:	<ol style="list-style-type: none">1. Centrifuge at 5,000xg for 5min.2. Carefully open the tube and add 100ul of sterile water to dissolve the DNA.3. Close the tube and incubate for 10 minutes at room temperature.4. Briefly vortex the tube and then do a quick spin (less than 5000xg) to concentrate the liquid at the bottom.5. Store the suspended plasmid at -20°C. The DNA is stable for at least one year from date of shipping when stored at -20°C.
RefSeq:	NM_001291873.2
RefSeq Size:	3480 bp
RefSeq ORF:	1611 bp
Locus ID:	10644
UniProt ID:	Q9Y6M1
Cytogenetics:	3q27.2
MW:	59.5 kDa
Gene Summary:	This gene encodes a protein that binds the 5' UTR of insulin-like growth factor 2 (IGF2) mRNA and regulates its translation. It plays an important role in metabolism and variation in this gene is associated with susceptibility to diabetes. Alternative splicing and promoter usage results in multiple transcript variants. Related pseudogenes are found on several chromosomes. [provided by RefSeq, Sep 2016]