

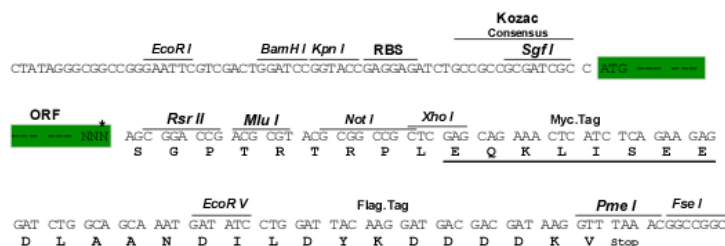
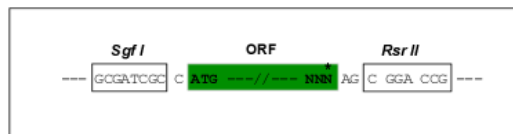
## Product datasheet for RC238761

### EHD1 (NM\_001282444) Human Tagged ORF Clone

#### Product data:

Product Type:	Expression Plasmids
Product Name:	EHD1 (NM_001282444) Human Tagged ORF Clone
Tag:	Myc-DDK
Symbol:	EHD1
Synonyms:	H-PAST; HPAST1; PAST; PAST1
Mammalian Cell Selection:	Neomycin
Vector:	pCMV6-Entry (PS100001)
E. coli Selection:	Kanamycin (25 ug/mL)
Chromatograms:	<a href="https://cdn.origene.com/chromatograms/mk6621_a05.zip">https://cdn.origene.com/chromatograms/mk6621_a05.zip</a>
Restriction Sites:	SgfI-RsrII
Cloning Scheme:	

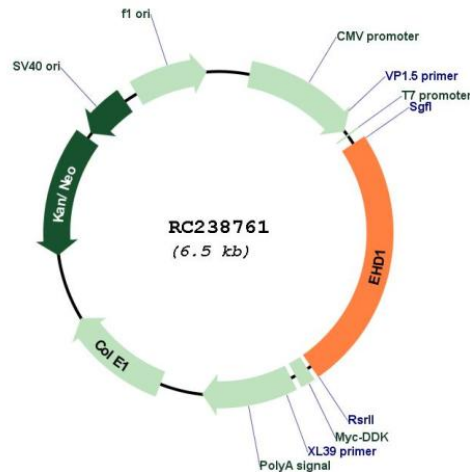
Cloning sites used for ORF Shuttling:



\* The last codon before the Stop codon of the ORF



View online »

**Plasmid Map:**


**ACCN:** NM\_001282444

**ORF Size:** 1602 bp

**OTI Disclaimer:** The molecular sequence of this clone aligns with the gene accession number as a point of reference only. However, individual transcript sequences of the same gene can differ through naturally occurring variations (e.g. polymorphisms), each with its own valid existence. This clone is substantially in agreement with the reference, but a complete review of all prevailing variants is recommended prior to use. [More info](#)

**OTI Annotation:** This clone was engineered to express the complete ORF with an expression tag. Expression varies depending on the nature of the gene.

**Components:** The ORF clone is ion-exchange column purified and shipped in a 2D barcoded Matrix tube containing 10ug of transfection-ready, dried plasmid DNA (reconstitute with 100 ul of water).

**Reconstitution Method:**

1. Centrifuge at 5,000xg for 5min.
2. Carefully open the tube and add 100ul of sterile water to dissolve the DNA.
3. Close the tube and incubate for 10 minutes at room temperature.
4. Briefly vortex the tube and then do a quick spin (less than 5000xg) to concentrate the liquid at the bottom.
5. Store the suspended plasmid at -20°C. The DNA is stable for at least one year from date of shipping when stored at -20°C.

**RefSeq:** [NM\\_001282444.1](#), [NP\\_001269373.1](#)

**RefSeq Size:** 3676 bp

RefSeq ORF: 1605 bp

Locus ID: 10938

UniProt ID: [Q9H4M9](#)

Cytogenetics: 11q13.1

Protein Families: Druggable Genome

Protein Pathways: Endocytosis

MW: 61.1 kDa

**Gene Summary:** This gene belongs to a highly conserved gene family encoding EPS15 homology (EH) domain-containing proteins. The protein-binding EH domain was first noted in EPS15, a substrate for the epidermal growth factor receptor. The EH domain has been shown to be an important motif in proteins involved in protein-protein interactions and in intracellular sorting. The protein encoded by this gene is thought to play a role in the endocytosis of IGF1 receptors. Alternatively spliced transcript variants have been found for this gene. [provided by RefSeq, Sep 2013]