

Product datasheet for **RC238755**

C18orf54 (NM_001288980) Human Tagged ORF Clone

Product data:

Product Type:	Expression Plasmids
Product Name:	C18orf54 (NM_001288980) Human Tagged ORF Clone
Tag:	Myc-DDK
Symbol:	C18orf54
Synonyms:	LAS2
Vector:	pCMV6-Entry (PS100001)
E. coli Selection:	Kanamycin (25 ug/mL)
Cell Selection:	Neomycin



[View online »](#)

ORF Nucleotide Sequence:

>RC238755 representing NM_001288980
 Red=Cloning site Blue=ORF Green=Tags(s)

TTTTGTAATACGACTCACTATAGGGCGGCCGGGAATTCGTCGACTGGATCCGGTACCGAGGAGATCTGCC
 GCC**GCGATCGCC**

ATGGCGAAATCAAAGACAAAACATAGACTTTTGTCTCAGGAATCTTCAGTATCTGCCTGCTGGCAAGCT
 GCACCCTGAGTGGTAGTAATTCCTCTAATTCTGATGGCTCGTTTCACTATAAAGATAAGCTGTACAGATC
 TGCTTCTCAAGCTCTACAGGCTTATATTGATGATTTTGTCTAGGCCAAATATATCCTGGTGCAAGCACT
 GGAAAAATTAACATTGATGAGGATTTTACTAATATGTCACAGTTCTGCAACTATATTTACAAACCAACA
 ATGCTTTTAAAACCTTGATCACAAAAGCACTCAAACCTCATATCCTGTAGAAGACACCCGTTAATGA
 CATAGACTCCATGAGCCTAACAACTGATGATCTATTAAGACTCCCAGCAGATGGATCATTCTTATACT
 TATGTTGGACCGAGTACCGAACGAGCAAGAAAAACAAGAAATGCCGTGGAAGACTGGGTTCAATTGGACA
 TTGAGAAGAATCCACATTTTCAAGGACCCTACACTTCCATGGCAAGGATAACTTTGTTACTCCTGTTAT
 ACGCTCAAATATAAATGGAAAGCAATGTGGTAGGCTGAAAAACCAAACTTATGAATAGGACTAATAAT
 TGCATTTCTGAATCATCTTTGTCTTTTCCCAAGAAATCGTCTTTCAAGGACAGTTTCAAGAACAGCTTG
 AAAAGAATTACCAAGATGGCTCACTAGCCAGAAATCTGACCTTAAATGTTTCAGGGATAACTAGTATAACC
 TGATTTCAAATACCCAGTCTGGCTGCACAAATCAAGACTTGCTACCTGATGCAAAATAGTCAAAGGGTTAT
 CAGATATTTAAAGATGATCAGTGTCCCTAGACATAGTCATCAGGCACAAGGAACCTTCTCGGCTTATCA
 AATAATTAGATTGTTTGAATATGCTTTTGAACCTCAAACCTTTCAAATTCCTTGAGTGATGATAAAGA
 ATTAGTTAATGAATACAAATGTGATTTTGAACATAGCCAGTGTCAATGTGAGAATCCACTTCTCCAGGA
 CAATCCACAAAGCCATTCAGTGGTGACAAAATGAATTGCTTATCTTGAAGGCCAAGAGAAATCTAGAGC
 AGTGTACTGAAGAATTACCAAAGTCCATGAAAAAGGATGACAGTCTTGCCTATTAGATAAACTGAAGC
 AGACAGATCATGGAAAAATATTCCTGTTACTTTCAAATCTCCTGTTCCCGTAACTCTGATGATAGTCTCT
 CAACAACTTCAAGGGCAAAGAGTGCTAAAGGGTTCTTGAAGACTTTCTAAATAATGATAATCAGAGCT
 GTACTCTCTGAGGCAAACATCATGGTCTGTTGAAGCCCTGAAACAAATGTTATTTAACCTTCAAGC
 AGTACAAGAACGTTTAAATCAAATAAGACCACAGATCCAAAAGAAGAGATTAACAAGTTTCAAGAGAT
 GATTTCTCTAAATTACAGTTGAAGGAAAGTATGATTCCTATTACTAGGTCACTTCAAGGCTTTGCACC
 ATTTATCTCGCCTGAGAGACCTGGTTGATGATACGAATGGAGAACGGTCACCGAAAATG

ACGCGTACGCGGCCGCTCGAGCAGAAACTCATCTCAGAAGAGGATCTGGCAGCAAATGATATCCTGGATT
 ACAAGGATGACGACGATAAGGTTTAA

Protein Sequence:

>RC238755 representing NM_001288980
 Red=Cloning site Green=Tags(s)

MAKSKTKHRLCSQESSVSALLASCTLSGSNSSNSDGSFHYKDKLYRSASQALQAYIDDFDLGQIYPGAST
 GKINIDEDFTNMSQFCNYIYKPNNAFENLDHKKHSNFI SCRRTVNDIDSMSLTDDLLRLPADGSFSYT
 YVGPSHRTSKKNKKCRGRLGSLDIEKNPHFQGPYTSMGKDNFVTPVIRSNINGKQCGRLLKPKLMNRTNN
 CISESSLFPPKSSFKDSSEHSLEKNYPRWLT SQKSDLNVSGITSIPDFKYVWLHNQDILLPDANSQRVY
 QIFKDDQCSPRHSHQAQGT SRLINKLDCFYAFEPSNFSNSLSDDKELVNEYKCDFEHSQCQCENPLLP
 QSTKPFSGDKIELLLILKAKRNLEQCTEELPKSMKKDDSPCLDKLEADRSWENIPVTFKSPVPVNSDDSP
 QQTSRAKSAKGVLEDFLNNDNQSCTLSGGKHHGPVEALKQMLFNLQAVQERFNQNKTTDPKEEIKQVSED
 DFKLQLKESMIPITRSLQKALHHL SRLRDLVDDTNGERSPKM

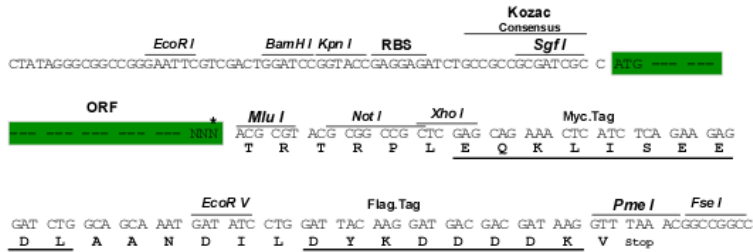
TRTRPLEQKLI SEEDLAANDILDYKDDDDKV

Restriction Sites:

Sgfl-MluI

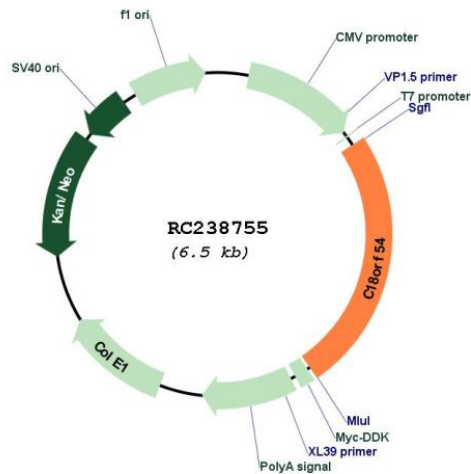
Cloning Scheme:

Cloning sites used for ORF Shuttling:



* The last codon before the Stop codon of the ORF

Plasmid Map:



ACCN:	NM_001288980
ORF Size:	1599 bp
OTI Disclaimer:	The molecular sequence of this clone aligns with the gene accession number as a point of reference only. However, individual transcript sequences of the same gene can differ through naturally occurring variations (e.g. polymorphisms), each with its own valid existence. This clone is substantially in agreement with the reference, but a complete review of all prevailing variants is recommended prior to use. More info
OTI Annotation:	This clone was engineered to express the complete ORF with an expression tag. Expression varies depending on the nature of the gene.
Components:	The ORF clone is ion-exchange column purified and shipped in a 2D barcoded Matrix tube containing 10ug of transfection-ready, dried plasmid DNA (reconstitute with 100 ul of water).
Reconstitution Method:	<ol style="list-style-type: none">1. Centrifuge at 5,000xg for 5min.2. Carefully open the tube and add 100ul of sterile water to dissolve the DNA.3. Close the tube and incubate for 10 minutes at room temperature.4. Briefly vortex the tube and then do a quick spin (less than 5000xg) to concentrate the liquid at the bottom.5. Store the suspended plasmid at -20°C. The DNA is stable for at least one year from date of shipping when stored at -20°C.
RefSeq:	NM_001288980.2
RefSeq Size:	5693 bp
RefSeq ORF:	1602 bp
Locus ID:	162681
UniProt ID:	Q8IYD9
Cytogenetics:	18q21.2
Protein Families:	Secreted Protein
MW:	60.8 kDa
Gene Summary:	Might play a role in cell proliferation.[UniProtKB/Swiss-Prot Function]