

Product datasheet for **RC238748**

INSC (NM_001278313) Human Tagged ORF Clone

Product data:

Product Type:	Expression Plasmids
Product Name:	INSC (NM_001278313) Human Tagged ORF Clone
Tag:	Myc-DDK
Symbol:	INSC
Vector:	pCMV6-Entry (PS100001)
E. coli Selection:	Kanamycin (25 ug/mL)
Cell Selection:	Neomycin



[View online »](#)

ORF Nucleotide Sequence:

>RC238748 representing NM_001278313
 Red=Cloning site Blue=ORF Green=Tags(s)

TTTTGTAATACGACTCACTATAGGGCGGCCGGAATTCGTCGACTGGATCCGGTACCGAGGAGATCTGCC
 GCC**CGGATCGCC**

ATGATGGCACTGCCTGGAGTGCACCTGGACTCCGTCACCCTGCCGGTCCAGCGCTACACCTGATGC
 AGGTGGACTCAGTCCAGCGCTGGATGGAAGATCTGAAGCTCATGACCGAGTGCGAGTGCATGTGTCTCT
 GCAGGCCAAGCCCATCAGCCTGGAAGAGGATGCACAGGGTGACCTCATCTGGCAGGTGGCCCTGGCCCT
 GGAGACCCCTGCAGTCTGCTCAAACGGGGTTGGGTATTAGCACAGAGCTGCGCAGGATCGGGCAGA
 AGCTGGCCAGGACCGCTGGGCACGGGTGCACAGCATGAGCGTGCCTGACCTGCCATGCCCGCTCCAT
 GGTGAGCGAGTACAGTGTGTGACAGGAACTCCTTGAAGGAAATGGGCGAGATTGAGAAGCTGCTAATG
 GAGAAATGCTCGGAGCTCTCGGCAGTACAGAGAGGTGCCTTCAAGTTGAGAATGAGCATGCTCTGAAGT
 CAATGAAGGCCTCGGTGAGTGCAGCCCTGAGCATGCTGGGCCAGCACTTTGGTCACTGCTGGAGCTGCC
 CCTGACACGGGAGGTTCCAGGCACTGGTGAAGAAAATTGATGCCTCAGACAATATCTACACCAGAGTCC
 ACCACAGGGAACCTGTTACGCTGACCCAGGAGGGGGCTCCCTTGTGCCGCATCATAGCCAAGGAGGGTG
 GGGTCGTAGCACTCTTCAAGTTTGCCTGGCAGGACAGTTTCCGGTGTGTACCCCAAGGCGCTCCGCAC
 GCTGGCCCTCCATCTGCTGCGTGGAGAGGGTGTCCACCAGCTGGAGAAGGTGGATGGCGTTCTGTCTTG
 GCCGACATCCTGACCGACAACAGCCACTCAGAGGCCACACGGGCTGAGGCTGCGGCTGTGGTGGCCAGG
 TCACCTCCCCACACCTGCCCGTCAACAGCACCTCAGTAGCTTCTGGAGAGCATGGAGGAGATCGTGAC
 AGCCCTCGTCAAAGTGTGCAAGAGGCCTCATCAGGGGAAGTCTTCTACTGGCCTCTGCGGCCCTTGGC
 AACATCACGTTCTTTGACACAATGGCCTGCGAGATGCTCCTGCAGTTGAATGCCATCCGTGTTCTCCTGG
 AAGCCTGCAGTGACAAGCAGAGAGTGGACACGCCCTTACACTCGGGACCAGATTGTACCATCTTGGCAAA
 CATGCTGTCTAGAACAGTGTGCTCTGACATCATTAGGAAAATGGGGTCCAGCTTATCATGGGCATG
 CTGCTGAAAAACCAAGTCTGGGACTCCTGCTGAAGTGGCAGCCTGTGAGCGAGTCCAGCAGAAAGCTG
 CAGTGACCCTGGCTCGTCTCAGCCGAGACCCAGATGTGGCACGGGAGGCCGTGCGGCTCAGCTGCATGTC
 CCGTCTCATCGAGCTCTGCAGATCCCCATCAGAGAGGAACAGCAGTACGCCGTGCTTGTGGCCTGCCTG
 GCTGCTGCGTAGATTGGCTGGGGTCTGCCCTGAAGGCCTCCAGGACTCTGACTTTAGCAGTTGGTCC
 AGCCTCGGCTGGTGGACTCCTTCTACTCTGCAGCAACATGGAGGAGATTTTGTG

ACGCGTACGCGGCCGCTCGAGCAGAACTCATCTCAGAAGAGGATCTGGCAGCAAATGATATCCTGGATT
 ACAAGGATGACGACGATAAGGTTTAA

Protein Sequence:

>RC238748 representing NM_001278313
 Red=Cloning site Green=Tags(s)

MMALPGGRHLDVTLPGQRLHLMQVDSVQRWMDLKLMTCECEMCVLQAKPISLEEDAQGDILLAGGPGP
 GDPLQLLLKRGWVISTELRRIGQKLAQDRWARVHSMVRLTCHARSMVSEYSAVSRNSLKEMGEIEKLLM
 EKCSSELSAVTERCLQVENEHVLKSMKACVSETLSMLGQHFQQLLELAL TREVQALVRKIDASDNIYTTES
 TTGNLFSLTQEGAPLCRIIAKEGGVVALFKVCRQDSFRCLYPQALRTLASICCVVEGVHQLKVDGVLCL
 ADILTDNSHSEATRAEAAAVVAQVTSPLPVTQHLSSFLESMEEIVTALVKLCQEASSGEVFLASAALA
 NITFFDTMACEMLLQLNAIRVLLLEACSDKQRVDPYTRDQIVTILANMSVLEQCADSIIQENGVQLIMGM
 LSEKPRSGTPEVAACERVQQAAVTLARLSRDPDVAREAVRLSCMSRLIELCRSPSERNSSDAVLVACL
 AALRRLAGVCPPEGLQDSDFQQLVQPRLVDSFLLCSNMEESFV

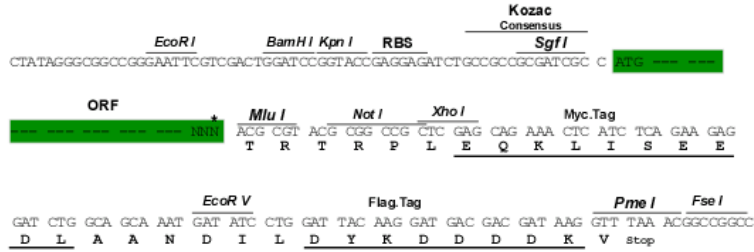
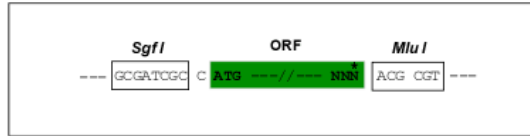
TRTRPLEQKLISEEDLAANDILDYKDDDDKV

Restriction Sites:

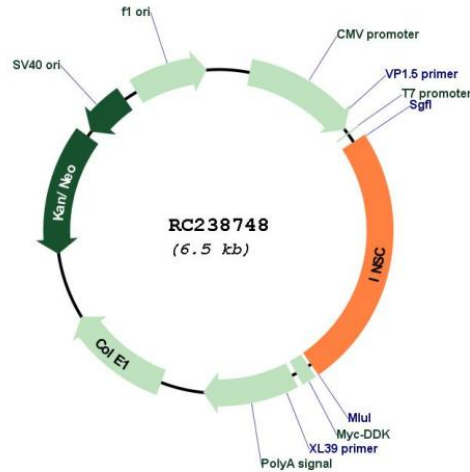
SgfI-MluI

Cloning Scheme:

Cloning sites used for ORF Shuttling:



* The last codon before the Stop codon of the ORF

Plasmid Map:


ACCN: NM_001278313

ORF Size: 1596 bp

OTI Disclaimer: The molecular sequence of this clone aligns with the gene accession number as a point of reference only. However, individual transcript sequences of the same gene can differ through naturally occurring variations (e.g. polymorphisms), each with its own valid existence. This clone is substantially in agreement with the reference, but a complete review of all prevailing variants is recommended prior to use. [More info](#)

OTI Annotation: This clone was engineered to express the complete ORF with an expression tag. Expression varies depending on the nature of the gene.

Components: The ORF clone is ion-exchange column purified and shipped in a 2D barcoded Matrix tube containing 10ug of transfection-ready, dried plasmid DNA (reconstitute with 100 ul of water).

Reconstitution Method:	<ol style="list-style-type: none">1. Centrifuge at 5,000xg for 5min.2. Carefully open the tube and add 100ul of sterile water to dissolve the DNA.3. Close the tube and incubate for 10 minutes at room temperature.4. Briefly vortex the tube and then do a quick spin (less than 5000xg) to concentrate the liquid at the bottom.5. Store the suspended plasmid at -20°C. The DNA is stable for at least one year from date of shipping when stored at -20°C.
RefSeq:	<u>NM_001278313.1, NP_001265242.1</u>
RefSeq Size:	2856 bp
RefSeq ORF:	1599 bp
Locus ID:	387755
UniProt ID:	<u>Q1MX18</u>
Cytogenetics:	11p15.2
MW:	58.9 kDa
Gene Summary:	In Drosophila, neuroblasts divide asymmetrically into another neuroblast at the apical side and a smaller ganglion mother cell on the basal side. Cell polarization is precisely regulated by 2 apically localized multiprotein signaling complexes that are tethered by Inscuteable, which regulates their apical localization (Izaki et al., 2006 [PubMed 16458856]).[supplied by OMIM, Mar 2008]