

Product datasheet for **RC238734**

ENTPD3 (NM_001291960) Human Tagged ORF Clone

Product data:

Product Type:	Expression Plasmids
Product Name:	ENTPD3 (NM_001291960) Human Tagged ORF Clone
Tag:	Myc-DDK
Symbol:	ENTPD3
Synonyms:	CD39L3; HB6; NTPDase-3
Vector:	pCMV6-Entry (PS100001)
E. coli Selection:	Kanamycin (25 ug/mL)
Cell Selection:	Neomycin



[View online »](#)

ORF Nucleotide Sequence:

>RC238734 representing NM_001291960
 Red=Cloning site Blue=ORF Green=Tags(s)

TTTTGTAATACGACTCACTATAGGGCGGCCGGGAATTCGTCGACTGGATCCGGTACCGAGGAGATCTGCC
 GCC**CGATCGCC**

ATGTTCACTGTGCTGACCCGCCAACCATGTGAGCAAGCAGGCCTCAAGGCCCTCTACCGAACTCCAACCA
 TCATTGCCTTGGTGGTCTTGCTGTGAGTATTGGTACTTGTGAGTATCACTGTCATCCAGATCCACAA
 GCAAGAGGTCCTCCCTCCAGGACTGAAGTATGGTATTGTGCTGGATGCCGGTCTTCAAGAACCCAGTC
 TACGTGTATCAATGGCCAGCAGAAAAAGAGAATAATACCGGAGTGGTCAGTCAAACCTTCAAATGTAGTG
 TGAAAGGCTCTGGAACTCCAGCTATGGAAATAACCCCAAGATGTCCCAGAGCCTTTGAGGAGTGTAT
 GCAAAAAGTCAAGGGGCAGGTTCCATCCACCTCCACGGATCCACCCCATTCACCTGGGAGCCACGGCT
 GGGATGCGCTTGTGAGGTTGCAAAATGAAACAGCAGCTAATGAAGTCTTGAAAGCATCCAAGCTACT
 TCAAGTCCCAGCCCTTGACTTTAGGGGTGCTCAAATCATTTCTGGGCAAGAAGAAGGGGTATATGGATG
 GATTACAGCCAATTTAATGGGAAATTTCTGGAGAAGAACCTGTGGCACATGTGGTGCACCCGCAT
 GGAGTGGAAACCACGGGTGCCCTGGACTTAGGTGGTGCCTCCACCCAAATATCCTTCGTGGCAGGAGAGA
 AGATGGATCTGAACACCAGCGACATCATGCAGGTGTCCTGTATGGCTACGTATACACGCTCTACACACA
 CAGCTTCCAGTCTATGGCCGGAATGAGGCTGAGAAGAAGTTTCTGGCAATGCTCCTGCAGAATTCCTCT
 ACCAAAAACCATCTACCAATCCCTGTTACCCTCGGGATTATAGCATCAGCTTACCATGGGCCATGTAT
 TTGATAGCCTGTGCACTGTGGACCAGAGGCCAGAAAGTTATAACCCCAATGATGTCATCACTTTTGAAGG
 AACTGGGACCCATCTCTGTGTAAGGAGAAGGTGGCTTCCATATTTGACTTCAAAGCTTGCCATGATCAA
 GAAACCTGTTCTTTTGTGAGGTTTATCAGCCAAGATTAAAGGGCCATTTGTGGCTTTTGCAGGATTCT
 ACTACACAGCCAGTGTAAATCTTTTTCAGGTAGCTTTTCCCTGGACACCTTCAACTCCAGCAGCATGAA
 TTTCTGCTCACAGAATTGGAGTCAGTCCCAGTCTGCTGCTCCCAAAATTTGATGAGGTATATGCCCGCTCT
 TACTGCTTCTCAGCCAACATACATCTACCACTTGTGTTGTGAACGGTTACAATTCACAGAGGAGACTTGGC
 CCCAAATACACTTTGAAAAAGAAGTGGGAATAGCAGCATAGCCTGGTCTCTTGCTACATGCTCAGCCT
 GACCAACCAGATCCCAGCTGAAAGCCCTCTGATCCGTCTGCCATAGAACCACCTGTCTTTGTGGGCACC
 CTCGCTTTCTTACAGCGGCAGCCTTGTGTCTGGCATTCTTGCATACCTGTGTTCCAGCAACCAGAA
 GAAAGAGGCATCCGAGCATGCCTTTGACCATGCAGTGGATTCTGAC

AG**CGGACCG**ACGCGTACGCGGCCGCTCGAGCAGAACTCATCTCAGAAGAGGATCTGGCAGCAAATGATATCC
 TGGATTACAAGGATGACGACGATAAGGTTTAA

Protein Sequence:

>RC238734 representing NM_001291960
 Red=Cloning site Green=Tags(s)

MFTVLTRQPCEQAGLKALYRTPTIIALVLLVSVVLSITVIQIHKQEVLPPLKYGIVLDAGSSRTTV
 YVYQWPAEKENNTGVVSQTFKCSVKGSGISSYGNPQDVPRAFEEMQKVKGQVPSHLHGSTPIHLGATA
 GMRLRLQNETAANEVLESIQSYFKSQPFDFRGAQIIISGQEEGVYGWITANYLMGNFLEKNLWHMWWHPH
 GVETTGALDLGGASTQISFVAGEKMDLNTSDIMQVSLYGYVYTYTHSFQCYGRNEAEKFLAMLLQNSP
 TKNHLTNPYPRDYSISFTMGHVFDLSLCTVDQRPESYNPNVDVITFEGTGDPPLCKEKVASIFDFKACHDQ
 ETCSFDGVYQPKIKGPFVAFAGFYTASALNLSGSFSLDTFNSSTWNFCSQNWSQLPLLLPKFDEVYARS
 YCFSANYIYHLFVNGYKFTEETWPQIHFEKEVGNSSIAWSLGYMLSLTNQIPAESPLIRLPIEPPVFGT
 LAFFTAALLCLAFLAYLCSATRRKRHSEHAFDHAVIDSD

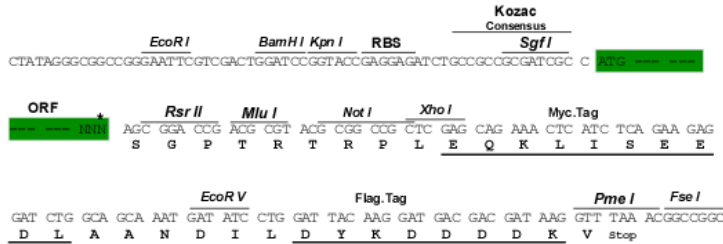
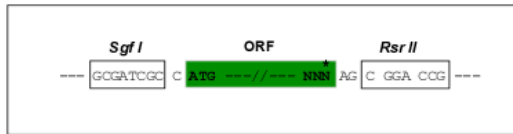
SGPTRTRPLE**QKLI**SEEDLAANDILDYKDDDDK**V**

Restriction Sites:

SgfI-RsrII

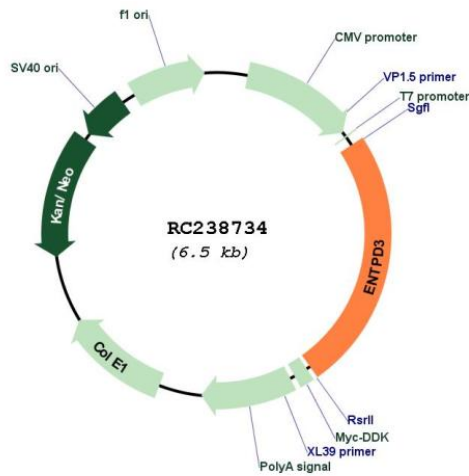
Cloning Scheme:

Cloning sites used for ORF Shuttling:



* The last codon before the Stop codon of the ORF

Plasmid Map:



ACCN:	NM_001291960
ORF Size:	1587 bp
OTI Disclaimer:	The molecular sequence of this clone aligns with the gene accession number as a point of reference only. However, individual transcript sequences of the same gene can differ through naturally occurring variations (e.g. polymorphisms), each with its own valid existence. This clone is substantially in agreement with the reference, but a complete review of all prevailing variants is recommended prior to use. More info
OTI Annotation:	This clone was engineered to express the complete ORF with an expression tag. Expression varies depending on the nature of the gene.
Components:	The ORF clone is ion-exchange column purified and shipped in a 2D barcoded Matrix tube containing 10ug of transfection-ready, dried plasmid DNA (reconstitute with 100 ul of water).
Reconstitution Method:	<ol style="list-style-type: none">1. Centrifuge at 5,000xg for 5min.2. Carefully open the tube and add 100ul of sterile water to dissolve the DNA.3. Close the tube and incubate for 10 minutes at room temperature.4. Briefly vortex the tube and then do a quick spin (less than 5000xg) to concentrate the liquid at the bottom.5. Store the suspended plasmid at -20°C. The DNA is stable for at least one year from date of shipping when stored at -20°C.
RefSeq:	NM_001291960.2
RefSeq Size:	2867 bp
RefSeq ORF:	1590 bp
Locus ID:	956
UniProt ID:	O75355
Cytogenetics:	3p22.1
Protein Families:	Transmembrane
Protein Pathways:	Purine metabolism, Pyrimidine metabolism
MW:	59.6 kDa
Gene Summary:	This gene encodes a plasma membrane-bound divalent cation-dependent E-type nucleotidase. The encoded protein is involved in the regulation of extracellular levels of ATP by hydrolysis of it and other nucleotides. Multiple transcript variants have been described. [provided by RefSeq, May 2014]