

Product datasheet for **RC238725**

SWAP70 (NM_001297714) Human Tagged ORF Clone

Product data:

Product Type:	Expression Plasmids
Product Name:	SWAP70 (NM_001297714) Human Tagged ORF Clone
Tag:	Myc-DDK
Symbol:	SWAP70
Synonyms:	HSPC321; SWAP-70
Vector:	pCMV6-Entry (PS100001)
E. coli Selection:	Kanamycin (25 ug/mL)
Cell Selection:	Neomycin



[View online »](#)

ORF Nucleotide Sequence:

>RC238725 representing NM_001297714
 Red=Cloning site Blue=ORF Green=Tags(s)

TTTTGTAATACGACTCACTATAGGGCGGCCGGAATTCGTCGACTGGATCCGGTACCGAGGAGATCTGCC
 GCC**CGGATCGCC**

ATGGGGAGCTTGAAGGAGGAGCTGCTCAAAGCCATCTGGCACGCCTTACCCGCACTCGACCAGGACCACA
 GCGGCAAGGTCTCCAAGTCCCAGCTCAAGTCTTTCCATAACCTGTGCACGGTCTGAAGTTCTCTCA
 TGACCCAGTTGCCCTTGAAGAGCACTTCAGGGATGATGATGAGGGTCCAGTGTCCAACCAGGGCTACATG
 CCTTATTTAAACAGGTTCAATTTGGAAAAGATTGAATACCTGCTTAAGAAGCTTACAGAAGCTATGGGAG
 GAGGTTGGCAGCAAGAACAATTTGAACATTATAAAATCAACTTTGATGACAGTAAAAATGGCCTTTCTGC
 ATGGGAACTTATTGAGCTTATTGAAAATGGACAGTTTAGCAAAGGCATGGACCGGCAGACTGTGTCTATG
 GCAATTAATGAAGTCTTAAATGAACCTTATTAGATGTGTTAAAGCAGGGTTACATGATGAAAAAGGGCC
 ACAGACGGAAAACTGGACTGAAAGATGGTTTGTACTAAAACCAACATAATTTCTTACTATGTGAGTGA
 GGATCTGAAGGATAAGAAAGGAGACATTCTCTGGATGAAAATTGCTGTGTAGAGTCCTTGCCCTGACAAA
 GATGGAAGAAAATGCCTTTTTCTCGTAAAATGTTTTGATAAGACTTTTGAATCAGTGCTTCAGATAAGA
 AGAAGAAACAGGAGTGGATTCAAGCCATTCATTCTACTATTATCTGTTGAAGCTGGGCAGCCCTCCACC
 ACACAAAGAAGCCCGCCAGCGTCGGAAGAAGCAAGCAAGCAGCTGGCTGAACAAGAGGAAGTGGAG
 CGACAAATGAAGGAACCTCAGGCCGCCAACGAAAGCAAGCAGCAGGAGCTGGAGGCCGTGCCGAAGAAAAC
 TGGAGGAAGCAGCATCTCGTGCAGCAGAAGAGGAAAAGAAACGCCTTCAGACTCAAGTGGAACTTCAGGC
 CAGGTTACAGCACAGACTGGAAGAGAGAAGCTTATCAGACAGCAGATGGAAGAACAGGTTGCTCAAAG
 TCCTCTGAACTGGAACAGTATTTACAGCGAGTACGGGAGCTGGAAGACATGTACCTAAAGCTGCAGGAGG
 CTCTTGAAGATGAGAGACAGGCCCGCAAGATGAAGAGACAGTGCAGGAACTTCAGGCCAGGTTGTTGGG
 GGAAGAGTCTTCCAAGAGGGCTGAACTAGAAAAGTGGCACTTGGAGCAGCAGCAGGCCATTACAGACAAC
 GAGGCGGAGAAGCAGGAGTTGGAGAATCAGCGTGTCTGAAGGAACAGGCCCTGCAGGAGGCCATGGAGC
 AGCTGGAGCAGCTTGAGTTAGAACGGAAGCAAGCACTTGAGCAGTACGAGGAAGTAAAAAGAAGCTGGA
 GATGGCAACTAATAAGACCAAGAGCTGGAAGGACAAAGTGGCCATCATGAAGGATTAATTCGACTGATA
 GAACCAGGTTCAAAGAACCCTCACCTGATCACTAACTGGGGACCTGCAGCTTTCAGTGGCAGAACTTG
 AAGAGAGAGAGAAGAACTGGAAGAGAAAAAGACCACGGAG

ACGCGTACGCGGCCGCTCGAGCAGAACTCATCTCAGAAGAGGATCTGGCAGCAAATGATATCTGGATT
 ACAAGGATGACGACGATAAGGTTTAA

Protein Sequence:

>RC238725 representing NM_001297714
 Red=Cloning site Green=Tags(s)

MGSLKEELLKAIWHAFTALDQDHSKGVSKSQLKVL SHNLCTVLKVPHPVVALEEHFRDDDEGPVSNQGYM
 PYLNRF ILEKIEYLLKKLTEAMGGGWQQEQFEHYKINFDDSKNGLSAWELIELIGNGQFSKGMDRQTVSM
 AINEVFNELILDVLKQGYMMKKGHRRNWTERWFLKPNIIISYYVSEDLKDKKGDILLDENCCVESLPDK
 DGKKCLFLVKCFDKTFEISASDKKKKQEWIQAIIHSTIHLKLGSPPPHKEARQRRKELRKKQLAEQEELE
 RQMKELQAANESKQQELEAVRKKLEEAASRAAEEEEKRLQTQVELQARFSTELEREKLIQQMEEQVAQK
 SSELEQYLQRVRELEDMYLLKQEALEDERQARQDEETVRKLQARLLEESSKRAELEKWHLEQQQAIQTT
 EAEKQELLENQRLKEQALQEAMEQLELELERKQALEQYEEVKKKLEMATNKTWSWKDKVAHHEGLIRLI
 EPGSKNPHLITNWGPAFTEAELEEREKNWKEKTTTE

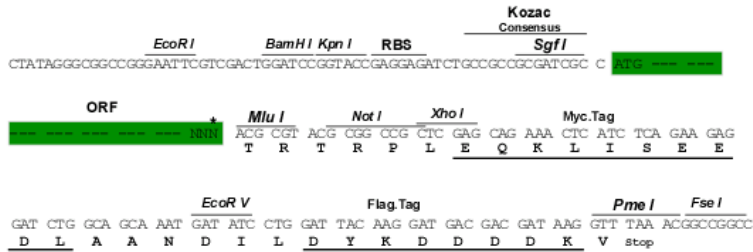
TRTRPLEQKLISEEDLAANDILDYKDDDDKV

Restriction Sites:

Sgfl-MluI

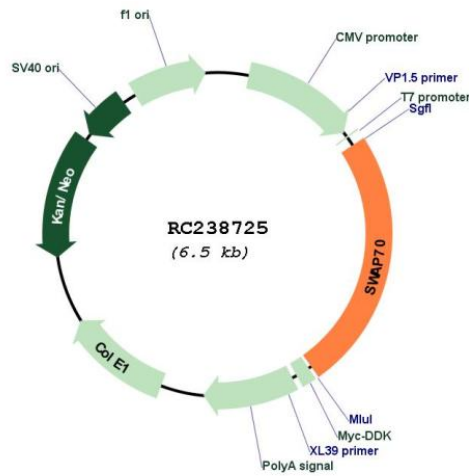
Cloning Scheme:

Cloning sites used for ORF Shuttling:



* The last codon before the Stop codon of the ORF

Plasmid Map:



ACCN:	NM_001297714
ORF Size:	1581 bp
OTI Disclaimer:	The molecular sequence of this clone aligns with the gene accession number as a point of reference only. However, individual transcript sequences of the same gene can differ through naturally occurring variations (e.g. polymorphisms), each with its own valid existence. This clone is substantially in agreement with the reference, but a complete review of all prevailing variants is recommended prior to use. More info
OTI Annotation:	This clone was engineered to express the complete ORF with an expression tag. Expression varies depending on the nature of the gene.
Components:	The ORF clone is ion-exchange column purified and shipped in a 2D barcoded Matrix tube containing 10ug of transfection-ready, dried plasmid DNA (reconstitute with 100 ul of water).
Reconstitution Method:	<ol style="list-style-type: none">1. Centrifuge at 5,000xg for 5min.2. Carefully open the tube and add 100ul of sterile water to dissolve the DNA.3. Close the tube and incubate for 10 minutes at room temperature.4. Briefly vortex the tube and then do a quick spin (less than 5000xg) to concentrate the liquid at the bottom.5. Store the suspended plasmid at -20°C. The DNA is stable for at least one year from date of shipping when stored at -20°C.
RefSeq:	NM_001297714.2
RefSeq Size:	4708 bp
RefSeq ORF:	1584 bp
Locus ID:	23075
UniProt ID:	Q9UH65
Cytogenetics:	11p15.4
MW:	62.5 kDa
Gene Summary:	Phosphatidylinositol 3,4,5-trisphosphate-dependent guanine nucleotide exchange factor (GEF) which, independently of RAS, transduces signals from tyrosine kinase receptors to RAC. It also mediates signaling of membrane ruffling. Regulates the actin cytoskeleton as an effector or adapter protein in response to agonist stimulated phosphatidylinositol (3,4)-bisphosphate production and cell protrusion (By similarity).[UniProtKB/Swiss-Prot Function]