

## Product datasheet for **RC238693**

### **IRX4 (NM\_001278634) Human Tagged ORF Clone**

#### **Product data:**

Product Type:	Expression Plasmids
Product Name:	IRX4 (NM_001278634) Human Tagged ORF Clone
Tag:	Myc-DDK
Symbol:	IRX4
Synonyms:	IRXA3
Vector:	pCMV6-Entry (PS100001)
E. coli Selection:	Kanamycin (25 ug/mL)
Cell Selection:	Neomycin



[View online »](#)

**ORF Nucleotide Sequence:**

>RC238693 representing NM\_001278634  
 Red=Cloning site Blue=ORF Green=Tags(s)

TTTTGTAATACGACTCACTATAGGGCGGCCGGAATTCGTCGACTGGATCCGGTACCGAGGAGATCTGCC  
 GCC**GCGATCGCC**

ATGTCCTACCCGAGTTTGGATACCCCTACTCCTCGGCTCCCGAGTTCTTGATGGCCACCAACTCCCTGA  
 GCACGTGCTGCGAGTCCGGAGGCCGACGCTGGCGGACTCCGGGCCCGCCGCTCGGCCACAGGCGCGGT  
 CTAAGTCCCGGTCTACGAGAGCCGGCTGCTGGCCACCGCGGCCACGAGCTCAACTCGGCCGCGGCGCTG  
 GGCGTCTATGGGGTCCCTATGGCGGATCGCAGGGCTATGGCAACTACGTGACCTACGGCTCGGAGGCGT  
 CCGCCTTCTACTCGTGAACAGCTTTGATTCCAAGGATGGTTCGGGATCTGCGCATGGGGCCTGGCACC  
 AGCCGCTGCCCTACTACCTTACGAGCCAGCTCTGGCCAGTACCCCTATGACAGGTATGGAACCATG  
 GACAGCGGCACGCGGCAAGAACGCCACGCGGAGACCACGACGCTCAAGGCTGGCTGCAGGAGC  
 ACCGAAGAACCCTACCCACCAAGGGCGAGAAGATCATGCTGGCCATCATACCAAGATGACCCTCAC  
 ACAGTCTCCACCTGGTTCGCCAACGCGCGCCGCGCCTCAAGAAGGAGAACAAGATGACGTGGCCGCCG  
 CGGAACAAGTGGCAGACGAGAAGCGGCCCTACGCGGAGGGCGAGGAGGAGGGGGGCGAGGAGGAGG  
 CGCGGGAGGAGCCCTCAAGAGCTCCAAGAACGCAGAGCCCGTGGGCAAAGAGGAGAAGGAGCTGGAGCT  
 TAGTGACTTGGACGACTTCGACCCGCTGGAAGCAGAGCCCGCGCGTGGGAGCTGAAGCCGCCCTCCAC  
 TCCCTGGACGGCGGTCTGGAGCGCTCCCGCCGCGCCGACGGCCCGTCAAGGAGGCCTCAGGCGCGC  
 TCCGGATGTCTCTGGCCGCGGTGGCGGAGCTGCTCTGGACGAGGACCTGGAGAGGGCCCGGAGCTGTCT  
 CCGCAGCGCGGCGCGGGCCGGAGCCACTGCCGGCGCAGAGGGCGGCCCTCAGTCTGCGAGGCCAAG  
 CTGGGGTTGTGCCGGCGGGGCGTGGCAGGCTGGAGGCTAAGCCGCGCATCTGGTCCCTGGCCACA  
 CAGCACCGCGCCCGCCGCGCCACCTCCCTGAGCCAGACTGAGTTCCGTCGTGCATGCTCAAGC  
 CCAAGTCCCGCGGCCCTGCGGCTGTGTCCTCCGCGCCCGCCACGTCGCCGTCTGTGGCCCTCCCCAC  
 TCTGGCGCCCTGGACAGGACCAGGACTCCCGGTAACAGTCTCAGAACTGGGTGGACGGGTCTTCC  
 ACGACCCCATCTCAGGCACAGCACTTTGAACAGGCCTGGGCCACCGCAAGGGCGCCCTCCTGGACCC  
 CGGGCCTCTGGACGCTCGTGGGGGCGGGCGCAACGTGCTGACTGCACCCCTGGCCGCGCCTTCCG  
 CCTGCCGTGCCCCAGGACGCCAGCTGCAGGCGCGCCAGGAGCTGCTCGCCCTGCCAAGGCCGCGC  
 GCAAACCTTCTGCGCC

**ACGCGT**ACGCGGCCGCTCGAGCAGAACTCATCTCAGAAGAGGATCTGGCAGCAAATGATATCCTGGATT  
 ACAAGGATGACGACGATAAGGTTTAA

**Protein Sequence:**

>RC238693 representing NM\_001278634  
 Red=Cloning site Green=Tags(s)

MSYPQFGYPYSSAPQFLMATNSLSTCCESGGRTLADSGPAASAQAPVYCPVYESRLLATARHELNSAAAL  
 GYVGGPYGGSQYGNVYTGSEASAFYSLNSFDSKDGSGSAHGLAPAAAAYYPYEPALGQYPYDRYGT  
 DSGTRRNATRETTSTLKAWLQEHKKNPYPTKGEKIMLAIITKMLTQVSTWTFANARRRLKKNKMTWPP  
 RNKCADEKRPYAEGEHEEGEHEAREEPLKSSKNAEPVGKEEKELELSDLDDFDPLEAEPACELKPPFH  
 SLDGGLERVPAAPDGPVKEASGALRMSLAAGGGAALDEDLERARSLRSAAGPEPLPGAEGGPQVCEAK  
 LGFVPAGASAGLEAKPRIWLAHTATAAAAAATSLSQTEFPCMLKRQGPAAAPAAVSSAPATSPSVALPH  
 SGALDRHQDSPVTSLRNWDGVFHDPILRHSTLNQAWATAKGALLDPGPLGRSLGAGANVLTAPLARAFP  
 PAVPQDAPAAGAARELLALPKAGGKPFCA

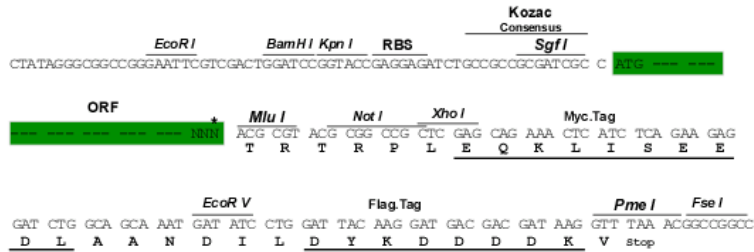
**TR**TRPLEQKLISEEDLAANDILDYKDDDDKV

**Restriction Sites:**

Sgfl-MluI

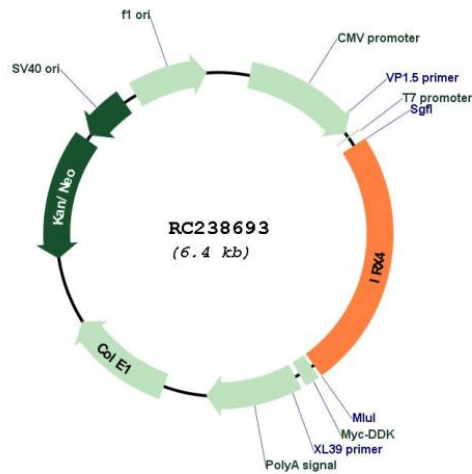
Cloning Scheme:

Cloning sites used for ORF Shutting:



\* The last codon before the Stop codon of the ORF

Plasmid Map:



<b>ACCN:</b>	NM_001278634
<b>ORF Size:</b>	1557 bp
<b>OTI Disclaimer:</b>	The molecular sequence of this clone aligns with the gene accession number as a point of reference only. However, individual transcript sequences of the same gene can differ through naturally occurring variations (e.g. polymorphisms), each with its own valid existence. This clone is substantially in agreement with the reference, but a complete review of all prevailing variants is recommended prior to use. <a href="#">More info</a>
<b>OTI Annotation:</b>	This clone was engineered to express the complete ORF with an expression tag. Expression varies depending on the nature of the gene.
<b>Components:</b>	The ORF clone is ion-exchange column purified and shipped in a 2D barcoded Matrix tube containing 10ug of transfection-ready, dried plasmid DNA (reconstitute with 100 ul of water).
<b>Reconstitution Method:</b>	<ol style="list-style-type: none"><li>1. Centrifuge at 5,000xg for 5min.</li><li>2. Carefully open the tube and add 100ul of sterile water to dissolve the DNA.</li><li>3. Close the tube and incubate for 10 minutes at room temperature.</li><li>4. Briefly vortex the tube and then do a quick spin (less than 5000xg) to concentrate the liquid at the bottom.</li><li>5. Store the suspended plasmid at -20°C. The DNA is stable for at least one year from date of shipping when stored at -20°C.</li></ol>
<b>RefSeq:</b>	<a href="#">NM_001278634.2</a>
<b>RefSeq Size:</b>	2333 bp
<b>RefSeq ORF:</b>	1560 bp
<b>Locus ID:</b>	50805
<b>UniProt ID:</b>	<a href="#">P78413</a>
<b>Cytogenetics:</b>	5p15.33
<b>MW:</b>	54.9 kDa
<b>Gene Summary:</b>	Likely to be an important mediator of ventricular differentiation during cardiac development. [UniProtKB/Swiss-Prot Function]