

## Product datasheet for **RC238674**

### ZNF83 (NM\_001277951) Human Tagged ORF Clone

#### Product data:

Product Type:	Expression Plasmids
Product Name:	ZNF83 (NM_001277951) Human Tagged ORF Clone
Tag:	Myc-DDK
Symbol:	ZNF83
Synonyms:	HPF1; ZNF816B
Vector:	pCMV6-Entry (PS100001)
E. coli Selection:	Kanamycin (25 ug/mL)
Cell Selection:	Neomycin



[View online »](#)

**ORF Nucleotide Sequence:**

>RC238674 representing NM\_001277951  
 Red=Cloning site Blue=ORF Green=Tags(s)

TTTTGTAATACGACTCACTATAGGGCGGCCGGAATTCGTCGACTGGATCCGGTACCGAGGAGATCTGCC  
 GCC**CGGATCGCC**

ATGCATGGGAGAAAGGATGATGCACAAAAGCAGCCTGTTAAAAATCAGCTTGATTAAACCCGAGTCAC  
 ATCTACCAGAAGTGCAGCTATTTCAAGCTGAAGGGAAAAATATATAAATATGATCAGTGGAAAAATCTGT  
 CAACAGTAGTTTCCTTAGTTTCCCCACCCCAACGATTTTCTTCTACTGTCAAACCCACATTTCTCATACA  
 TATGAATGTAATTTGTGGATTCATTATTCACACAAAAAGAGAAAGCAAATATTGGGACAGAACTACAA  
 AATGTAGTGAGCGTGGCAAGGCCTTTCATCAAGGCTTACATTTTACTATACATCAAATAATCCATACTAA  
 AGAGACGCAATTTAAATGTGATATATGTGGCAAGATCTCAATAAAAAATCAAACCTTGCAAGTCATCAA  
 AGAATTCATACTGGAGAGAAGCCATATAAATGTAATGAATGTGGCAAGGTCTCCATAATATGTCACACC  
 TTGCACAGCATCGCAGGATTCATACTGGAGAGAAACCATATAAATGTAATGAATGTGGCAAGGTCTTTAA  
 TCAAATTTACACCTTGACAACATCAAAGAATTCATACCGGAGAGAAACCTTATAAATGTAATGAATGT  
 GAAAGGTCTTCCATCAAATTTACACCTTGACAACATCGGACAATTCATACTGGAGAAAAACCTTACG  
 AATGTAACAAATGTGGCAAGGTGTTCACTCGCAATTCCTACCTGTACAACATCTGATCATTCACTAGG  
 AGAGAAACCTTACAGATGTAATGTATGTGGAAAGGTCTTCCATCATATTTACACCTTGACAACATCAG  
 AGAATCCACACTGGAGAGAAACCTTACAAATGTAATGAGTGTGGCAAGGTCTTCACTCACAAGTCATCCC  
 TAGTAAATCACTGGAGAATTCATACTGGAGAGAAACCTTACAAATGTAATGAGTGTGGCAAGGTCTTCA  
 TCACAAGTCATCCCTAGTAAATCACTGGAGAAATCCACACTGGAGAGAAACCTTACAAATGTAATGAATGT  
 GGCAAGGTCTTCACTCGCAATTCATACCTTGCCCAACATCTGATAATTCATGCCGGTGGAGAAACCTTATA  
 AGTGTGATGAATGTGACAAAGCATTCACTGCAAAATTCACATCTTGTACAACATCACAGAACTCATACTGG  
 AGAGAAACCTTACAAATGTGATGAATGTGGCAAAGTCTTCACTGCAAAATTCATACCTTGCATATCATTGG  
 AGAATTCATACTGGAGAAAAAGCTTATAAATGTAATGAATGTGGGAAAGGTCTTCCGTCTAAACTCATCCC  
 TAGCACATCATCGGAAAATTCACACTGGAGAGAAACCTTTCAAATGTAATGAATGTGGCAAAGCTTTTAG  
 TATGCGTTCAAGCCTCACTAATCATCATGCGATCCACACTGGAGAGAAACATTTCAAATGTAATGAATGT  
 GGCAAACCTTCCGCGACAATTCATATCTTGTACGTCATCAGAGATTTTCATGCCGAAAGAAATCTAACA  
 CATGTAAT

**ACGCGT**ACGCGGCCGCTCGAGCAGAAACTCATCTCAGAAGAGGATCTGGCAGCAAATGATATCCTGGATT  
 ACAAGGATGACGACGATAAGGTTTAA

**Protein Sequence:**

>RC238674 representing NM\_001277951  
 Red=Cloning site Green=Tags(s)

MHGRKDDAQKQPVKNQLGLNPQSHLPELQLFQAEKIKYKDYHMEKSVNSSSLVSPQRISSVTKTHISHT  
 YECNFVDSLFTQKEKANIIGTEHYKCSERKAFHQGLHFTIHQIIHTKETQFKCDICGKIFNKKSNLASHQ  
 RIHTGEKPYKCNECGKVFHNMSHLAQHRIHTGEKPYKCNECGKVFNQIISHLAQHQRIHTGEKPYKCNEC  
 GKVFHQIISHLAQHRIHTGEKPYECNKCGKVF SRNSYL VQHLI IHTGEKPYRCNVCGKVFHIIISHLAQHQ  
 RIHTGEKPYKCNECGKVF SHKSSLVNHWRIHTGEKPYKCNECGKVF SHKSSLVNHWRIHTGEKPYKCNEC  
 GKVFSRNSYLAQHLLI IHAGEKPYKCDECDKAFSQNSHLVQHRIHTGEKPYKCDECGKVF SQNSYLAHW  
 RIHTGEKAYKCNECGKVFGLNSSLAHHRKIHTGEKPFKCNECGKAFSMRSSLTNHHAIHTGEKHFKCNEC  
 GKLFRDNSYLVRHQRFHAGKKSNTCN

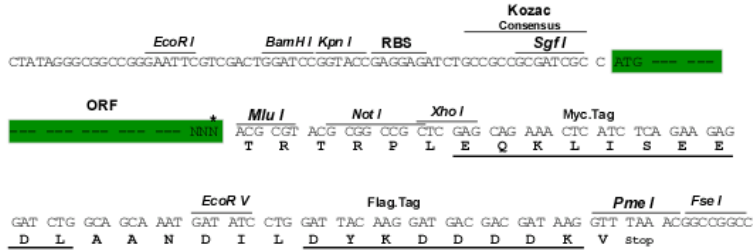
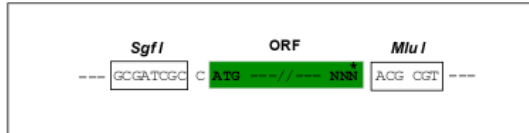
**TR**TRPLEQKLI SEEDLAANDILDYKDDDDKV

**Restriction Sites:**

Sgfl-MluI

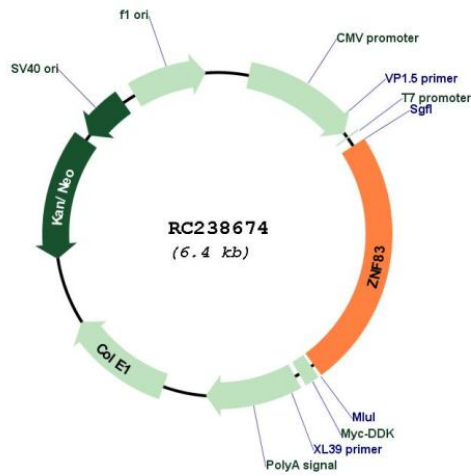
Cloning Scheme:

Cloning sites used for ORF Shutting:



\* The last codon before the Stop codon of the ORF

Plasmid Map:



<b>ACCN:</b>	NM_001277951
<b>ORF Size:</b>	1548 bp
<b>OTI Disclaimer:</b>	The molecular sequence of this clone aligns with the gene accession number as a point of reference only. However, individual transcript sequences of the same gene can differ through naturally occurring variations (e.g. polymorphisms), each with its own valid existence. This clone is substantially in agreement with the reference, but a complete review of all prevailing variants is recommended prior to use. <a href="#">More info</a>
<b>OTI Annotation:</b>	This clone was engineered to express the complete ORF with an expression tag. Expression varies depending on the nature of the gene.
<b>Components:</b>	The ORF clone is ion-exchange column purified and shipped in a 2D barcoded Matrix tube containing 10ug of transfection-ready, dried plasmid DNA (reconstitute with 100 ul of water).
<b>Reconstitution Method:</b>	<ol style="list-style-type: none"><li>1. Centrifuge at 5,000xg for 5min.</li><li>2. Carefully open the tube and add 100ul of sterile water to dissolve the DNA.</li><li>3. Close the tube and incubate for 10 minutes at room temperature.</li><li>4. Briefly vortex the tube and then do a quick spin (less than 5000xg) to concentrate the liquid at the bottom.</li><li>5. Store the suspended plasmid at -20°C. The DNA is stable for at least one year from date of shipping when stored at -20°C.</li></ol>
<b>RefSeq:</b>	<a href="#">NM_001277951.1</a> , <a href="#">NP_001264880.1</a>
<b>RefSeq Size:</b>	2673 bp
<b>RefSeq ORF:</b>	1551 bp
<b>Locus ID:</b>	55769
<b>UniProt ID:</b>	<a href="#">P51522</a>
<b>Cytogenetics:</b>	19q13.41
<b>Protein Families:</b>	Transcription Factors
<b>MW:</b>	60.2 kDa
<b>Gene Summary:</b>	May be involved in transcriptional regulation.[UniProtKB/Swiss-Prot Function]