

Product datasheet for **RC238673**

ZNF83 (NM_001277949) Human Tagged ORF Clone

Product data:

Product Type:	Expression Plasmids
Product Name:	ZNF83 (NM_001277949) Human Tagged ORF Clone
Tag:	Myc-DDK
Symbol:	ZNF83
Synonyms:	HPF1; ZNF816B
Vector:	pCMV6-Entry (PS100001)
E. coli Selection:	Kanamycin (25 ug/mL)
Cell Selection:	Neomycin



[View online »](#)

ORF Nucleotide Sequence:

>RC238673 representing NM_001277949
 Red=Cloning site Blue=ORF Green=Tags(s)

TTTTGTAATACGACTCACTATAGGGCGGCCGGAATTCGTCGACTGGATCCGGTACCGAGGAGATCTGCC
 GCC**CGCATCGCC**

ATGCATGGGAGAAAGGATGATGCACAAAAGCAGCCTGTTAAAAATCAGCTTGGATTAACCCGAGTCAC
 ATCTACCAGAAGCTGCAGCTATTTCAAGCTGAAGGGAAAAATATATAAATATGATCAGTGGAAAAATCTGT
 CAACAGTAGTTTCCTTAGTTTCCCCACCCCAACGATTTTCTTACTGTCAAAACCCACATTTCTCATACA
 TATGAATGTAATTTGTGGATTCATTATTCACACAAAAAGAGAAAAGCAAATATTGGGACAGAACTACA
 AATGTAGTGAGCGTGGCAAGGCCTTTCATCAAGGCTTACATTTTACTATACATCAAATAATCCATACTAA
 AGAGACGCAATTTAAATGTGATATATGTGGCAAGATCTCAATAAAAAATCAAACCTTGCAAGTCATCAA
 AGAATTCATACTGGAGAGAAGCCATATAAATGTAATGAATGTGGCAAGGTCTCCATAATATGTCACACC
 TTGCACAGCATCGCAGGATTCATACTGGAGAGAAACCATATAAATGTAATGAATGTGGCAAGGTCTTTAA
 TCAAATTTACACCTTGACAACATCAAAGAATTCATACCGGAGAGAAACCTTATAAATGTAATGAATGT
 GAAAGGTCTTCCATCAAATTTACACCTTGACAACATCGGACAATTCATACTGGAGAAAAACCTTACG
 AATGTAACAAATGTGGCAAGGTGTTCACTCGCAATTCCTACCTTGTAACAACATCTGATCATTCACTGG
 AGAGAAACCTTACAGATGTAATGTATGTGGAAAGGTCTTCCATCATATTTACACCTTGACAACATCAG
 AGAATCCACACTGGAGAGAAACCTTACAAATGTAATGAGTGTGGCAAGGTCTTCACTGACAAGTCATCCC
 TAGTAAATCACTGGAGAATTCATACTGGAGAGAAACCTTACAAATGTAATGAGTGTGGCAAGGTCTTCA
 TCACAAGTCATCCCTAGTAAATCACTGGAGAAATCCACACTGGAGAGAAACCTTACAAATGTAATGAATGT
 GGCAAGGTCTTCACTCGCAATTCATACCTGCCAACATCTGATAATTCATGCCGGTGGAGAAACCTTATA
 AGTGTGATGAATGTGACAAAGCATTCACTGCAAAATTCACATCTTGTACAACATCACAGAATCCATACTGG
 AGAGAAACCTTACAAATGTGATGAATGTGGCAAAGTCTTCACTGCAAAATTCATACCTTGCATATCATTGG
 AGAATTCATACTGGAGAAAAAGCTTATAAATGTAATGAATGTGGGAAAGGTCTTCCGTCTAAACTCATCCC
 TAGCACATCATCGGAAAATTCACACTGGAGAGAAACCTTTCAAATGTAATGAATGTGGCAAAGCTTTTAG
 TATGCGTTCAAGCCTCACTAATCATCATGCGATCCACACTGGAGAGAAACATTTCAAATGTAATGAATGT
 GGCAAACCTTCCGCGACAATTCATATCTTGTACGTCATCAGAGATTTTCATGCCGAAAGAAATCTAACA
 CATGTAAT

ACGCGTACGCGGCCGCTCGAGCAGAAACTCATCTCAGAAGAGGATCTGGCAGCAAATGATATCCTGGATT
 ACAAGGATGACGACGATAAGGTTTAA

Protein Sequence:

>RC238673 representing NM_001277949
 Red=Cloning site Green=Tags(s)

MHGRKDDAQKQPVKNLGLNPQSHLPELQLFQAEKIKYDHEKSVNSSLVSPQRISSVTKTHISHT
 YECNFVDSLFTQKEKANIIGTEHYKCSERKAFHQGLHFTIHQIIHTKETQFKCDICGKIFNKKSNLASHQ
 RIHTGEKPYKCNECGKVFHNMSHLAQHRIHTGEKPYKCNECGKVFNQIISHLAQHQRIHTGEKPYKCNEC
 GKVFHQIISHLAQHRTIHTGEKPYECNKCGKVF SRNSYL VQHLI IHTGEKPYRCNVCGKVFHIIISHLAQHQ
 RIHTGEKPYKCNECGKVF SHKSSLVNHWRIHTGEKPYKCNECGKVF SHKSSLVNHWRIHTGEKPYKCNEC
 GKVFSRNSYLAQHLLI IHAGEKPYKCDECDKAFSQNSHLVQHRIHTGEKPYKCDECGKVF SQNSYLAHW
 RIHTGEKAYKCNECGKVFGLNSSLAHHRKIHTGEKPFKCNECGKAF SMRSSLTNHHA IHTGEKHFKCNEC
 GKLFRDNSYLVRHQRFHAGKKSNTCN

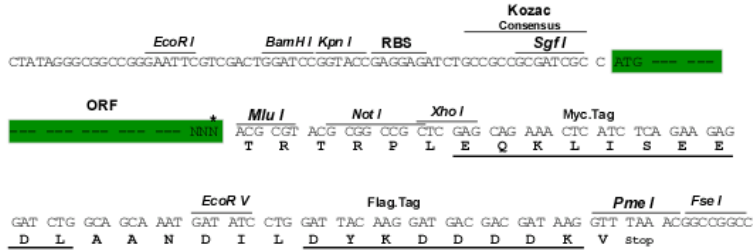
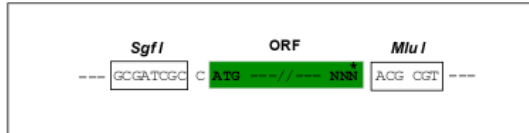
TRTRPLEQKLI SEEDLAANDILDYKDDDDKV

Restriction Sites:

Sgfl-MluI

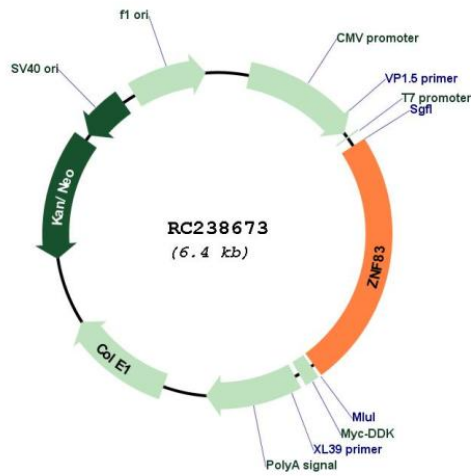
Cloning Scheme:

Cloning sites used for ORF Shutting:



* The last codon before the Stop codon of the ORF

Plasmid Map:



ACCN:	NM_001277949
ORF Size:	1548 bp
OTI Disclaimer:	The molecular sequence of this clone aligns with the gene accession number as a point of reference only. However, individual transcript sequences of the same gene can differ through naturally occurring variations (e.g. polymorphisms), each with its own valid existence. This clone is substantially in agreement with the reference, but a complete review of all prevailing variants is recommended prior to use. More info
OTI Annotation:	This clone was engineered to express the complete ORF with an expression tag. Expression varies depending on the nature of the gene.
Components:	The ORF clone is ion-exchange column purified and shipped in a 2D barcoded Matrix tube containing 10ug of transfection-ready, dried plasmid DNA (reconstitute with 100 ul of water).
Reconstitution Method:	<ol style="list-style-type: none">1. Centrifuge at 5,000xg for 5min.2. Carefully open the tube and add 100ul of sterile water to dissolve the DNA.3. Close the tube and incubate for 10 minutes at room temperature.4. Briefly vortex the tube and then do a quick spin (less than 5000xg) to concentrate the liquid at the bottom.5. Store the suspended plasmid at -20°C. The DNA is stable for at least one year from date of shipping when stored at -20°C.
RefSeq:	NM_001277949.1 , NP_001264878.1
RefSeq Size:	2929 bp
RefSeq ORF:	1551 bp
Locus ID:	55769
UniProt ID:	P51522
Cytogenetics:	19q13.41
Protein Families:	Transcription Factors
MW:	60.2 kDa
Gene Summary:	May be involved in transcriptional regulation.[UniProtKB/Swiss-Prot Function]