

Product datasheet for **RC238627**

FSD1L (NM_001287191) Human Tagged ORF Clone

Product data:

Product Type:	Expression Plasmids
Product Name:	FSD1L (NM_001287191) Human Tagged ORF Clone
Tag:	Myc-DDK
Symbol:	FSD1L
Synonyms:	CCDC10; CSDUFD1; FSD1CL; FSD1NL; MIR1
Vector:	pCMV6-Entry (PS100001)
E. coli Selection:	Kanamycin (25 ug/mL)
Cell Selection:	Neomycin



[View online »](#)

ORF Nucleotide Sequence:

>RC238627 representing NM_001287191
 Red=Cloning site Blue=ORF Green=Tags(s)

TTTTGTAATACGACTCACTATAGGGCGGCCGGAATTCGTCGACTGGATCCGGTACCGAGGAGATCTGCC
 GCC**GCGATCGCC**

ATGGACTCCCAGAAAGAAGCTCTACAGAGGATCATTTCAACTCTGGCAAATAAAAATGATGAAATTCAGA
 ACTTTATTGATACACTACATCATACACTAAAAGGAGTTCAGGAAAATTCGTCCAACATACTCTCAGAGTT
 AGATGAAGAATTTGATAGTTTATACTCTATACTGGATGAAGTAAAAAGAAAGTATGATTAAGTGTATCAAG
 CAGGAACAAGCTCGTAAATCCCAAGAGTTACAGAGTCAGATTAGTCAATGTAATAATGCCCTGGAGAACT
 CTGAAGAATAATTAGAATTTGCAACAAGGTCATTAGATATAAAGGAACCTGAAGAATTTTCAAAGGCTGC
 CAGACAGATCAAGGATAGAGTCACAATGGCTTCAGCCTTTTCGCCTTTCTTTGAAACCAAAGGTCAGTGAC
 AACATGACTCATTTAATGGTGGATTTCTCACAGGAAAGACAGATGCTGCAAACCTTTGAAGTTTTTGGCAG
 TCCCCAAAGCTCCAGAGATAGATCCAGTAGAGTGTGGTGGCAGATAACTCTGTAAACAGTGGCTGGAG
 AATGCCAGAAGAAGATAATAAGATTGACCATTTTATACTGGAACATAGGAAGACTAATTTTATGAGTACTT
 CCACGTGTAAAGGATGAGCGATGCTGGGAGATAATTGATAATATTAAGGGTACTGAATATACACTATCAG
 GCTTAAAATTTGATTTCAAGTATATGAATTTTCAAGTGGAGCTTGTAAACAAGGCTGTGGCTGGAGAGTA
 TTCTGATCCAGTACTCTAGAGACCAAAGCACTTAACTTCAATTTGGATAACTCCTCATCCCATTTGAACT
 CTGAAAGTTGAAGATACATGTGTAGAGTGGGATCCTACTGGAGGAAAAGGTCAGAAAAGTAAAATTAAG
 GAAAAGAGAACAAGGCGAGTGTCCATGTTACTTCACTGAAGAAACATAACAAGTGTACACCATCCCCAAA
 ACGAACATCTGTAGGCTCCAGGCCACCAGCAGTAAAGAGGCGAGTAGAGATCGTTTTACTGGAGAATCATA
 ACAGTCTGGGAGACACTGCTATTGAAAGTGGACAACATTATTGGGAGGTCAAGGCCAGAAGGATTGTA
 AATCCTACAGTGTGGGAGTAGCATACAAAACGTTGGGAAAATTTGACCAATTTGGGAAAAGCAAACTAG
 TTGGTGTATCCATGTCAACAACCTGGCTACAAAACACATTTGCAGCAAAGCATAATAATAAAGTCAAAGCT
 TTGGATGTTACTGTTCTGAAAAAATAGGTGATTTTTGTGATTTTGTGAGTTTGTGAGGGTCAACTTTCATTCTATG
 ATGCAAATTTCAAACAGTTGCTATATTCCTTTAAGACAAAATTTACTCAGCCAGTACTACCTGGTTTCAT
 GGTATGGTGTGGTGGACTTTCTTTGAGTACTGGGATGCAGGTTCCAAGTGTGTGAGAACACTTCAGAAA
 AGTGAAAATGGAATGACTGGTTCAGCTAGCAGCCTGAACAATGTTGTTACTCAA

ACGCGTACGCGGCCGCTCGAGCAGAAACTCATCTCAGAAGAGGATCTGGCAGCAAATGATATCCTGGATT
 ACAAGGATGACGACGATAAGGTTTAA

Protein Sequence:

>RC238627 representing NM_001287191
 Red=Cloning site Green=Tags(s)

MDSQKEALQRIISTLANKNDEIQNFIDTLHHTLKGQENSSNILSELDEEFDSLYSILDEVKESMINCIK
 QEQARKSQELQSQISQCNNALENSEELLEAFATRSLDIKEPEEFKAARQIKDRVTMASAFRLSLKPKVSD
 NMTHLMVDFSQERQMLQLKFLPVPKAPIDPVECLVADNSVTVAWRMPEEDNKIDHFILHRKTNFDGL
 PRVKDERCWEIIDNIKGTETL SGLKFD SKYMNFRVRACNKAVAGEYSDPVTLETALNFNLDNSSSHLN
 LKVEDTCVEWDP TGGKGQESKIKGKENKGSVHVTSLKKHTSGTPSPKRTSVGSRPPAVRGSRDRFTGESY
 TVLGDTAIESGQHYWEVKAQKDKSYSVGVAYKTLGKFDQLGKTNTSWCIHVNNWLQNTFAAKHNNKVK
 LDVTVPEKIGVFCDFDGGQLSFYDANSKQLLYSFKTKFTQPVLPGFMVWCGGLSLSTGMQVPSAVRTLQK
 SENGMTGSASSLNNVVTQ

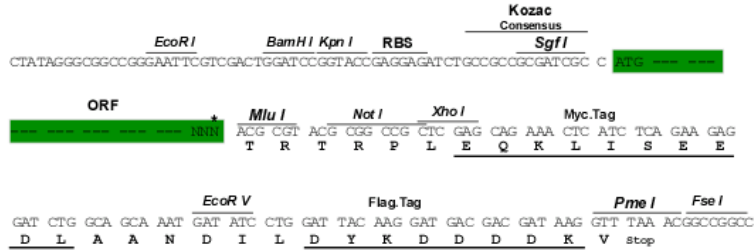
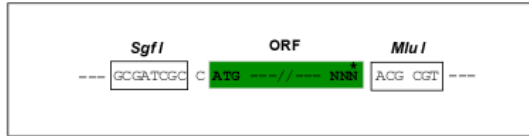
TRTRPLEQKLISEEDLAANDILDYKDDDDKV

Restriction Sites:

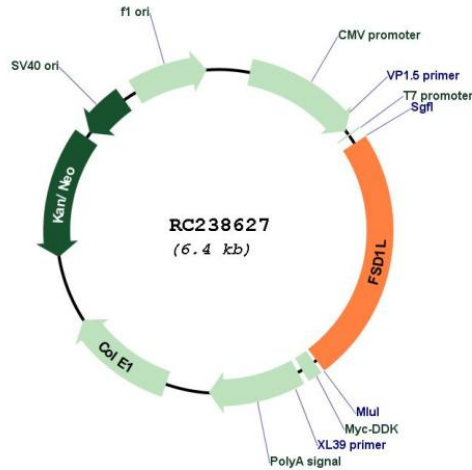
Sgfl-MluI

Cloning Scheme:

Cloning sites used for ORF Shutting:



* The last codon before the Stop codon of the ORF

Plasmid Map:


ACCN: NM_001287191

ORF Size: 1524 bp

OTI Disclaimer: The molecular sequence of this clone aligns with the gene accession number as a point of reference only. However, individual transcript sequences of the same gene can differ through naturally occurring variations (e.g. polymorphisms), each with its own valid existence. This clone is substantially in agreement with the reference, but a complete review of all prevailing variants is recommended prior to use. [More info](#)

OTI Annotation: This clone was engineered to express the complete ORF with an expression tag. Expression varies depending on the nature of the gene.

Components: The ORF clone is ion-exchange column purified and shipped in a 2D barcoded Matrix tube containing 10ug of transfection-ready, dried plasmid DNA (reconstitute with 100 ul of water).

Reconstitution Method:

1. Centrifuge at 5,000xg for 5min.
2. Carefully open the tube and add 100ul of sterile water to dissolve the DNA.
3. Close the tube and incubate for 10 minutes at room temperature.
4. Briefly vortex the tube and then do a quick spin (less than 5000xg) to concentrate the liquid at the bottom.
5. Store the suspended plasmid at -20°C. The DNA is stable for at least one year from date of shipping when stored at -20°C.

RefSeq: [NM_001287191.1](#), [NP_001274120.1](#)

RefSeq Size: 7684 bp

RefSeq ORF: 1527 bp

Locus ID: 83856

UniProt ID: [Q9BXM9](#)

Cytogenetics: 9q31.2

MW: 57.5 kDa