

Product datasheet for **RC238574**

PDXDC1 (NM_001285449) Human Tagged ORF Clone

Product data:

Product Type:	Expression Plasmids
Product Name:	PDXDC1 (NM_001285449) Human Tagged ORF Clone
Tag:	Myc-DDK
Symbol:	PDXDC1
Synonyms:	LP8165
Vector:	pCMV6-Entry (PS100001)
E. coli Selection:	Kanamycin (25 ug/mL)
Cell Selection:	Neomycin



[View online »](#)

ORF Nucleotide Sequence:

>RC238574 representing NM_001285449
 Red=Cloning site Blue=ORF Green=Tags(s)

TTTTGTAATACGACTCACTATAGGGCGGCCGGGAATTCGTCGACTGGATCCGGTACCGAGGAGATCTGCC
 GCC**CGGATCGCC**

ATGAGCGCTCCCTGGAGAAGATAGCAGACCCACGTTAGCTGAAATGGGAAAAAATTGAAGGAGCGAG
 TGAAGATGCTGGAGGACAGTCAGAGAAGAACAGAAGAGGAAAAATGGAAAAGACTCATATCCGGAGATAT
 TCCAGGCCCACTCCAGGGCAGTGGGCAAGATATGGTGAGCATCCTCCAGTTAGTTCAGAATCTCATGCAT
 GGAGATGAAGATGAGGAGCCCCAGAGCCCCAGAATCCAAAATATTGGAGAACAAGGTCATATGGCTTTGT
 TGGGACATAGTCTGGGAGCTTATTTCAACTCTGGACAAAGAGAAGCTGAGAAAACTTACAAGTATAGGAT
 ACTTTCCAGATACCACCTTATGGCTATGCAGAAATTTTTCAGATATGAAAATGGGTGTGCTTATTTCCACGAA
 GAGGAAAGAGAAGGACTTGCAAAGATATGTAGGCTTGCCATTCATTCTCGATATGAAGACTTCGTAGTGG
 ATGGCTCAATGTGTTATATAACAAGAAGCCTGTCATATATCTTAGTGTCTGCTAGACCTGGCCTGGG
 CCAATACCTTTGTAATCAGCTCGGCTTGCCTTCCCCTGCTTGTGCCGTGTACCCTGTAACACTGTGTTT
 GGATCCAGCATCAGATGGATGTTGCCTTCTGGAGAACTGATTAAGATGATATAGAGCGAGGAAGAC
 TGCCCTGTTGCTTGTGCGAAATGCAGGAACGGCAGCAGTAGGACACACAGACAAGATTGGGAGATTGAA
 AGAACTCTGTGAGCAGTATGGCATATGGCTTATGTGGAGGGTGTGAATCTGGCAACATTGGCTCTGGGT
 TATGTCTCCTCATCAGTGTGGCTGCAGCCAAATGTGATAGCATGACGATGACTCCTGGCCCGTGGCTGG
 GTTTGCCAGCTGTTCTCGGGTGACACTGTATAAACACGATGACCCTGCCTTGACTTTAGTTGCTGGTCT
 TACATCAAATAAGCCACAGACAACTCCGTGCCCTGCCTCTGTGGTTATCTTTACAATACTTGGGACTT
 GATGGGTTTGTGGAGAGGATCAAGCATGCCTGTCAACTGAGTCAACGGTTGCAGGAAAGTTTGAAGAAAG
 TGAATTACATCAAATCTTGGTGAAGATGAGCTCAGCTCCCCAGTGGTGGTGTTCAGATTTTTCCAGGA
 ATTACCAGGCTCAGATCCGGTGTTTAAAGCCGTCCCAGTGCCCAACATGACACCTTCAGGAGTCGGCCGG
 GAGAGGCACTCGTGTGACGCGCTGAATCGCTGGCTGGGAGAACAGCTGAAGCAGCTGGTCCCTGCAAGCG
 GCCTCACAGTCATGGATCTGGAAGCTGAGGGCACGTGTTTGGGTTTCCAGCCCTTTGATGACCGCAGCAGG
 GTGGTCCCCTGTGGGACCACAACCAGGTATGACTGTGTGAGAAGCAGGCTCACTACCAGGCTACCAGGG
 AGCACAGGGGAGCAGGCGCCACCT

AG**CGGACCG**ACGCGTACGCGGCCGCTCGAGCAGAACTCATCTCAGAAGAGGATCTGGCAGCAAATGATATCC
 TGGATTACAAGGATGACGACGATAAGGTTTAA

Protein Sequence:

>RC238574 representing NM_001285449
 Red=Cloning site Green=Tags(s)

MDASLEKIADPTLAEMGKNLKEAVKMLEDSQRRTEEENGKKLISGDIPGPLQSGSQDMVSIQLVQNLMMH
 GDEDEEPQSPRIQNIQEQGHMALLGHSLGAYISTLDKEKLRKLTTRILSDTTLWLCRIFRYENGCAFYHE
 EEREGLAKICRLAIHSRYEDFVVDGFNVLNKKPVIYLSAAARPLGQYLCNQLGLPFPCLCRVPNCNTVF
 GSQHQMDFVAFLEKLIKDDIERGRLPLLLVANAGTAAVGHGTDKIGRLKELCEQYGIWLHVEGVNLAATLALG
 YVSSSVLAAAKCDSMTMTPGPWGLPAVPAVTLYKHDDPALTLVAGLTSNKPTDKLRALPLWLSLQYLLGL
 DGFVERIKHACQLSQRLESLKKVNYIKILVEDELSPPVVFRRFFQELPGSDPVFKAVPVPNMTPSGVGR
 ERHSCDALNRWLGELKQLVPASGLTVMLEAEGTCLRFSPLMATAAGWSHCCTTTRYDCVRSRLTTRLPG
 STGEQAPP

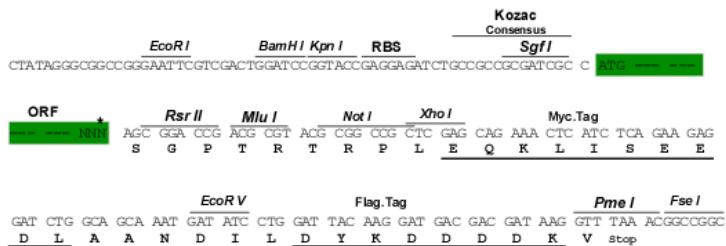
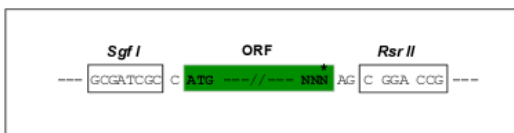
SGP**TRTRPLEQKLI**SEEDLAANDILDYKDDDDKV

Restriction Sites:

Sgfl-RsrII

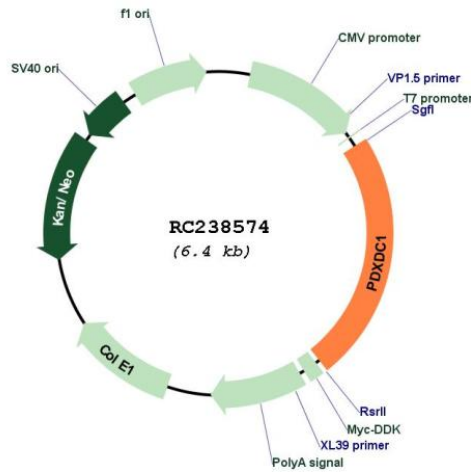
Cloning Scheme:

Cloning sites used for ORF Shuttling:



* The last codon before the Stop codon of the ORF

Plasmid Map:



ACCN: NM_001285449

ORF Size: 1494 bp

OTI Disclaimer: The molecular sequence of this clone aligns with the gene accession number as a point of reference only. However, individual transcript sequences of the same gene can differ through naturally occurring variations (e.g. polymorphisms), each with its own valid existence. This clone is substantially in agreement with the reference, but a complete review of all prevailing variants is recommended prior to use. [More info](#)

OTI Annotation: This clone was engineered to express the complete ORF with an expression tag. Expression varies depending on the nature of the gene.

Components: The ORF clone is ion-exchange column purified and shipped in a 2D barcoded Matrix tube containing 10ug of transfection-ready, dried plasmid DNA (reconstitute with 100 ul of water).

Reconstitution Method:

1. Centrifuge at 5,000xg for 5min.
2. Carefully open the tube and add 100ul of sterile water to dissolve the DNA.
3. Close the tube and incubate for 10 minutes at room temperature.
4. Briefly vortex the tube and then do a quick spin (less than 5000xg) to concentrate the liquid at the bottom.
5. Store the suspended plasmid at -20°C. The DNA is stable for at least one year from date of shipping when stored at -20°C.

RefSeq: [NM_001285449.1](#), [NP_001272378.1](#)

RefSeq Size: 2120 bp

RefSeq ORF: 1497 bp

Locus ID: 23042

Cytogenetics: 16p13.11

MW: 55.4 kDa