

Product datasheet for **RC238573**

CWF19L1 (NM_001303404) Human Tagged ORF Clone

Product data:

Product Type:	Expression Plasmids
Product Name:	CWF19L1 (NM_001303404) Human Tagged ORF Clone
Tag:	Myc-DDK
Symbol:	CWF19L1
Synonyms:	C19L1; hDrn1; SCAR17
Vector:	pCMV6-Entry (PS100001)
E. coli Selection:	Kanamycin (25 ug/mL)
Cell Selection:	Neomycin



[View online »](#)

ORF Nucleotide Sequence:

>RC238573 representing NM_001303404
 Red=Cloning site Blue=ORF Green=Tags(s)

TTTTGTAATACGACTCACTATAGGGCGGCCGGGAATTCGTCGACTGGATCCGGTACCGAGGAGATCTGCC
 GCC**GCGATCGCC**

ATGGCACAGAAACCGCTGCGCCTCTTGCTTGTGGAGATGTTGAAGGAAAGTTTGATATTTTATTCAATA
 GAGTTCAGCAATTCAGAAGAAAAGTGGAACTTTGATCTGCTGTTGTGTGTAGGAAATTTCTTTGGCTC
 CACCCAAGATGCTGAATGGGAGGAGTAAAGACTGGCATCAAGAAAGCTCCTATTCAGACATATGTGCTT
 GGTGCTAATAACCAGGAAACAGTAAAATATTTCCAGGATGCTGATGGATGTGAATTAGCTGAAAACATTA
 CTTATCTGGTTCGTAAGGTATCTTCACTGGAAGCTCGGGGCTGCAGATTGTGTACCTCAGTGGGACAGA
 ATCCTTAAATGAGCCAGTACCAGGTTATAGTTTTAGTCCCAAGGATGTGTCTTCTCTGAGAATGATGCTG
 TGTACAACCTCCAGTTAAGGGTGTGATATCTTGCTCACATCCCCATGGCCCAAGTGTGTGGGAACT
 TTGGGAATTTCTTGAGAAGTGATACCAAAAAATGTGGTTCTGCTTTGGTTTCCAGTCTTGCCACGGG
 CTTGAAACCAAGATACCATTTTCTGCTGTTTGGAAAAGACCTATTATGAGAGGCTTCCATATCGAAACCAT
 ATCATTCTACAGGAAAATGCACAGCATGCCACCCGGTTTATAGCTCTGGCAAATGTTGGAATCCAGAAA
 AGAAAAAGTATCTTTACGCGTTCAGTATTGTTCCCATGAAGCTAATGGATGCAGCAGAACTGGTAAAAACA
 GCCTCCGGATGCTACTGAAAACCTTACAGAAAATCTGGGCAGGAAGCATCCATAGGAAAAGCAAATTTCTT
 GCCCTGTGGAAGAATCAGCCTGTCAGTTTTTCTTTGATTTAAATGAAAAGCAGGGAAGGAAGCGTTTCAT
 CCACAGGTAGAGATAGCAATCTTCTCCTCATCCAAAGCAGCCTCGAAACCTCCTCAGCCTCCAGGACC
 CTGCTGGTTTTGCCTTGCTAGCCCTGAAGTGGAAAAACATTTGGTGGTCAACATCGGCACACATTGCTAC
 CTTGCCCTGGCCAAAGGAGGCTTATCTGATGACCATGTCTCATCCTGCCTATTGGACTACTACAGTCCAG
 TGGTGGAGCTTTCAGCAGAGGTGTTAGAAGAGGTGGAGAAGTAAAGGCCACTCTGAGACGGTTCTTTAA
 GAGTCGAGGGAATGGTGTGTTGATTTGAGAGAAATTATAAGAGCCATCACCTCCAGTACAGATTGCA
 CAGCCAGGAGCAGCATATTTTTATGTTGAACTTGACACAGGAGAAAAGCTTTTCCACAGAATTA AAAAGA
 ATTTTCTTTGCAAGTTTGAAGGGAGGTCTGGCCAGTGAAGCCATCCTTAATGTTCTGATAAGTCTGA
 CTGGAGGCAGTGTGAGATCAGCAAGGAAGACGAGGAGACCCTGGCTCGCCGCTTCCGAAAAGACTTTGAG
 CCCTATGACTTTACTCTGGATGAC

AG**GCGACCG**ACGCGTACGCGGCCGCTCGAGCAGAACTCATCTCAGAAGAGGATCTGGCAGCAAATGATATCC
 TGGATTACAAGGATGACGACGATAAGGTTTAA

Protein Sequence:

>RC238573 representing NM_001303404
 Red=Cloning site Green=Tags(s)

MAQKPLRLLACGDVEGKFDILFNVRQAIQKKSGNFDLLLCVGNFFGSTQDAEWEEYKTGIKKAPIQTYVL
 GANNQETVKYFQDADGCELAENITYLGRKGIFTGSSGLQIVYLSGTESLNEPVPGYSFSPKDVSSLRMML
 CTTTQFKGVDILLTSPWPKCVGNFNGSSGEVDTKKCGSALVSSLATGLKPRYHFAALEKTYERLPYRNH
 IILQENAQHATRFIALANVGNPEKKKYLAFSIVPMKLMDAEELVKQPPDVTENPYRKSQGEASIGKQIL
 APVEESACQFFDLNEKQGRKRSSTGRDSKSSPHPKQPRKPPQPPGPCWFCLASPEVEKHLVNNIGTHCY
 LALAKGGLSDDHVLILPIGHYQSVVELSAEVVEEVEKYKATLRRFFKSRGKWCVVFERNYKSHHLQLQIA
 QPGAAYFYVELDTGEKLFHRIKKNFPLQFGREVLASEAILNVPDKSDWRQCQISKEDEETLARRFRKDFE
 PYDFTLDD

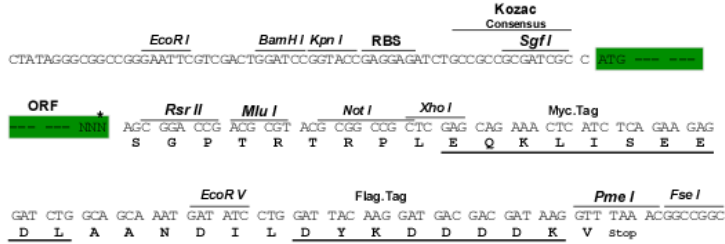
SGP**TRTRPLEQKLI**SEEDLAANDILDYKDDDDKV

Restriction Sites:

Sgfl-RsrII

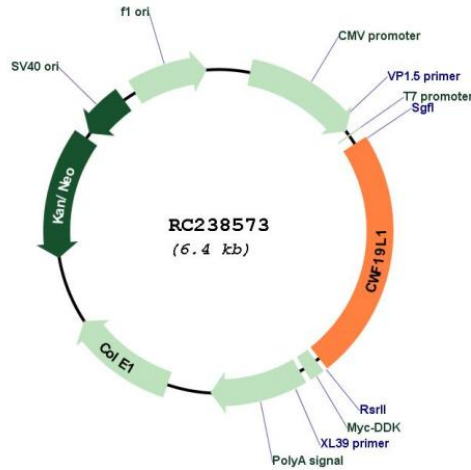
Cloning Scheme:

Cloning sites used for ORF Shuttling:



* The last codon before the Stop codon of the ORF

Plasmid Map:



ACCN: NM_001303404

ORF Size: 1494 bp

OTI Disclaimer: The molecular sequence of this clone aligns with the gene accession number as a point of reference only. However, individual transcript sequences of the same gene can differ through naturally occurring variations (e.g. polymorphisms), each with its own valid existence. This clone is substantially in agreement with the reference, but a complete review of all prevailing variants is recommended prior to use. [More info](#)

OTI Annotation: This clone was engineered to express the complete ORF with an expression tag. Expression varies depending on the nature of the gene.

Components: The ORF clone is ion-exchange column purified and shipped in a 2D barcoded Matrix tube containing 10ug of transfection-ready, dried plasmid DNA (reconstitute with 100 ul of water).

Reconstitution Method:

1. Centrifuge at 5,000xg for 5min.
2. Carefully open the tube and add 100ul of sterile water to dissolve the DNA.
3. Close the tube and incubate for 10 minutes at room temperature.
4. Briefly vortex the tube and then do a quick spin (less than 5000xg) to concentrate the liquid at the bottom.
5. Store the suspended plasmid at -20°C. The DNA is stable for at least one year from date of shipping when stored at -20°C.

RefSeq: [NM_001303404.2](#)

RefSeq Size: 2533 bp

RefSeq ORF: 1497 bp

Locus ID: 55280

UniProt ID: [Q69YN2](#)

Cytogenetics: 10q24.31

MW: 56.6 kDa

Gene Summary: This gene encodes a member of the CWF19 protein family. Mutations in this gene have been associated with autosomal recessive spinocerebellar ataxia-17 and mild cognitive disability. Alternative splicing results in multiple transcript variants. [provided by RefSeq, Dec 2014]