

Product datasheet for RC238215

FAM222B (NM_001288640) Human Tagged ORF Clone

Product data:

Product Type:	Expression Plasmids
Product Name:	FAM222B (NM_001288640) Human Tagged ORF Clone
Tag:	Myc-DDK
Symbol:	FAM222B
Synonyms:	C17orf63
Vector:	pCMV6-Entry (PS100001)
E. coli Selection:	Kanamycin (25 ug/mL)
Cell Selection:	Neomycin
ORF Nucleotide Sequence:	>RC238215 representing NM_001288640 Red=Cloning site Blue=ORF Green=Tags(s)

TTTTGTAATACGACTCACTATAGGGCGCCGGGAATTCGTCGACTGGATCCGGTACCGAGGAGATCTGCC
GCC**CGATCGCC**

ATGAACCCCCAGTGGCACCCCTATGCTACTGTGGCACCCAGCACTTTAGCCCACCCCAGGCCAGGCTC
TGGCCCGCAGCAGGCCCTGCAGCATGCACAGACCCTGGCCCATGCCCTCCCCAGACGCTGCAGCACCC
TCAGGGTATCCCGCCACCCAGGCACTGTCCACCCTCAGAGCCTCCAGCAGCCTCAGGGCTGGGCCAC
CCTCAGCCCATGGCCAAACCCAGGGCTTGGTCCACCCTCAGGCCCTGGCTCACCAGGGTCTCCAGCACC
CCCACAATCCCTTGTGTCATGGAGGCCGAAGATGCCAGACTCAGATGCCCCCCGAATGTGACCGTGTG
TACCTCAACTATCCCCCTTTCAATGGCGGCCACTCTGCAGCACAGCCAGCCTCCGGACCTGAGTAGCATC
GTGCACCAGATCAACCAGTTTTGCCAGACGAGGGCAGGCATCAGCACTACCTCAGTGTGTGAGGGCCAGA
TCGCCAACCCAGCCCCATTAGTCGAGTCTGCTCATCAATGCAAGCACCCGGGTGTGACCCACAGCGT
CCCCACACCAATGCCTTCATGTGTGGTCAATCCCATGGAGCACACCCACGGGCCACCCCGCGTTGCC
GCTGCAGGTCTGTCAACCTGCCACAGGCATCTCTCGGTCCCCACTGGCTACCCTAGCGACCTCAAGC
CAGTCACTGGAACAGCACCAGCTGGCCACCTACAGCAGATGTGCAGCAGGGTGTGGGACGCCAGC
CCCTGGCCTGACAGGCAAGCATGCGGCAGGACGAGTTGGCAGGCCTGGCTTTGTGGCAAGGCCCT
GCCTACCCGACAGAACTCTGCCTGGCGCAGTCTTCCATCTGAAGCCACCCTGGAAAAGCCGACCCCAT
CCCCACCAGTCAACGGCATGGCAGCCCCATTGGCCTACCCCAATGGTCACTACTTCCAACCCTGTGGAA
CAACATTCTGCCACTCCAATAGCGACAGCTCGGGTCTCAGGACCTTGCCATGCCGTTCCACGGTGGG
CAGCCACAGGTGCACCCCTCGACTGTGCGGCAGCTCCCGGGGCCACTACCGAGCAGGGACCGGGGGCG
GTCCAGTGGCAAGCCAGAACAGCTTGATGCAAACAGTGGATTACCTAAGTGGGGATTTCCAACAGGCCTG
CTTCCGAGAACAGAGCCTGGCCATGCTGAGCAAGGCCACCGAGCCCTGGCAACCGAGCCCCGATCCC
ACAGAGAGTCAAGTCTTCATATTCAGCACCCAGGGTATAGA

ACGCGTACGCGGCCGCTCGAGCAGAAACTCATCTCAGAAGAGGATCTGGCAGCAAATGATATCCTGGATT
ACAAGGATGACGACGATAAGGTTTAA



[View online »](#)

Protein Sequence: >RC238215 representing NM_001288640
 Red=Cloning site Green=Tags(s)

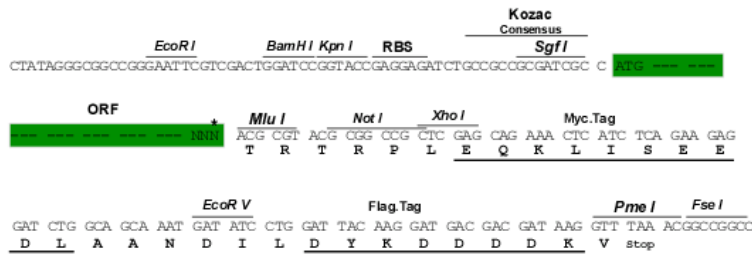
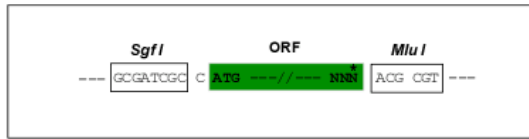
MNPPVAPYATVAPSTLAHPQAQALARQQALQHAQTLAHAPPQTLQHPQGIPPPQALSHPQSLQQPQGLGH
 PQPMAQTQGLVHPQALAHQGLQHPHNPLLHGGRKMPDSDAPPNVTVSTSTIPLSMAATLQHSQPPDLSSI
 VHQINQFCQTRAGISTTSVCEGQIANPSPISRLLINASTRVSTHVSPTPMPSCVVNPMETHAATAALP
 AAGPVNLP TGISRVPTGYPSDLKPVTVNQHQLAHLQMCSEASGTPAPGLTGKHAAGRELAGPGFVGKAP
 AYPQELCLAQSFHLKPPLEKPTSPPPVNGMAAPLAYPNGHYFQPLWNNILPTPNSDSSGSQDLAMPFHGG
 QPTGAPLDCAAAPGAHYRAGTGGGPVSAQNSLMQTVDYLSGDFQQACFREQLAMLKHAHRAPGNRAPDP
 TESRSLHIQHPGYR

TRTRPLEQKLISEEDLAANDILDYKDDDDKV

Restriction Sites:
Cloning Scheme:

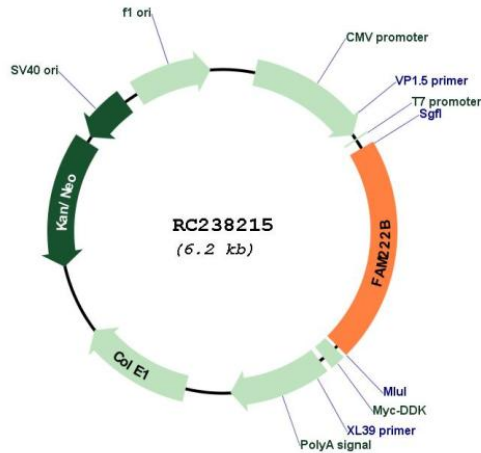
SgfI-MluI

Cloning sites used for ORF Shuttling:



* The last codon before the Stop codon of the ORF

Plasmid Map:



ACCN: NM_001288640

ORF Size:	1302 bp
OTI Disclaimer:	The molecular sequence of this clone aligns with the gene accession number as a point of reference only. However, individual transcript sequences of the same gene can differ through naturally occurring variations (e.g. polymorphisms), each with its own valid existence. This clone is substantially in agreement with the reference, but a complete review of all prevailing variants is recommended prior to use. More info
OTI Annotation:	This clone was engineered to express the complete ORF with an expression tag. Expression varies depending on the nature of the gene.
Components:	The ORF clone is ion-exchange column purified and shipped in a 2D barcoded Matrix tube containing 10ug of transfection-ready, dried plasmid DNA (reconstitute with 100 ul of water).
Reconstitution Method:	<ol style="list-style-type: none">1. Centrifuge at 5,000xg for 5min.2. Carefully open the tube and add 100ul of sterile water to dissolve the DNA.3. Close the tube and incubate for 10 minutes at room temperature.4. Briefly vortex the tube and then do a quick spin (less than 5000xg) to concentrate the liquid at the bottom.5. Store the suspended plasmid at -20°C. The DNA is stable for at least one year from date of shipping when stored at -20°C.
RefSeq:	NM_001288640.2
RefSeq Size:	4067 bp
RefSeq ORF:	1305 bp
Locus ID:	55731
UniProt ID:	Q8WU58
Cytogenetics:	17q11.2
MW:	46 kDa