

Product datasheet for RC238172

HSZFP36 (ZNF823) (NM_001297610) Human Tagged ORF Clone

Product data:

Product Type:	Expression Plasmids
Product Name:	HSZFP36 (ZNF823) (NM_001297610) Human Tagged ORF Clone
Tag:	Myc-DDK
Symbol:	HSZFP36
Synonyms:	HSZFP36
Mammalian Cell Selection:	Neomycin
Vector:	pCMV6-Entry (PS100001)
E. coli Selection:	Kanamycin (25 ug/mL)
ORF Nucleotide Sequence:	>RC238172 representing NM_001297610. Blue=ORF Red=Cloning site Green=Tag(s)

```
GCTCGTTTGTGAAACCGTCAGAATTTGTAAATACGACTCACTATAGGGCGCCGGGAATTCGTCGACTG
GATCCGGTACCGAGGAGATCTGCCGCCGCGATCGCC
ATGGCGGCACACCATGGAGATGGACCTTATAAATGTAAGTTGTGTGGAAAGCCTTTGTTGGCCAGT
TTATTTTCATTTGCACGAAAGAACACACTGGAGAGAAACCGTATGAATGTAAGCAGTGTCTAAAGCC
TTTCCTTTTACAGTTCCTATCTAAGACATGAAAGAATCCACACGGGAGAGAAAGCGTATGAATGTAAG
CAGTGTCCAAAGCCTTTCCTGATTACAGTACCTATCTAAGACATGAGAGAACTCACACCGGAGAGAAA
CCCTATAAATGTACACAATGTGGAAAGCCTTCAGCTGTTACTATTACACTCGACTACATGAAAGGACT
CACACGGGAGAACAACCCTATGCATGTAAGCAATGTGGGAAAACGTTTTATCATCACACAAGCTTTCGA
AGACACATGATAAGGCACACTGGAGACGGACCACATAAATGTAAGATATGTGGGAAAGGCTTTGATTGT
CCTAGTTCAGTTCGAAATCATGAAACTACTCACACTGGAGAGAAACCCTATGAATGTAAGCAGTGTGGG
AAAGTGTATCTCATAGCTCGAGCTTTCGAAGTCATGATAACACACACAGGAGATGGACCCAGAAA
TGCAAGATATGTGGGAAAGCCTTTGGTTGCCAGTTATTTCAAAGACATGAAAGGACTCACACTGGA
GAGAAACCCTATCAATGTAACAATGTGGTAAAGCCTTCAGTCTTGCCGGTTCCTTCGAAGACATGAA
GCAACTCACACTGGAGTAAACCCTATAAATGTCAGTGTGGGAAAGCCTTTAGTGATCTCTCTTCCCTT
CAAAATCATGAGACAACACTCACACTGGAGAGAAGCCATATGAGTGAAGGAATGTGGGAAAGCATTTCAGT
TGTTTTCAAATACCTTTCTCAACATAAAAGGACCCACACAGTAAAAAACCTTATGAGTGTAAAACATGT
AGAAAAGCCTTCAGTATTTTCAGTAACTTAAAAGTCCATGAAAGGATTCAGTCTGGAGAGAAGCCATAT
GAATGTAAGGAATGTGGAAAAGCATTCTCTTGGCTCACTTGCCTTCTACGACATGAAAGAATTCACACT
GGAGAGAAACCCTATGAATGTCTACAATGTGGTAAAGCCTTCACTCGTTCCCGTTTCTTCGAGGACAT
GAAAAAAGTCACTGGAGAGAAGCTGTATGAATGTAAGGAATGTGGGAAAGCATTGAGTTCCTCCGT
TCCTTGATAGACATAAAAGGACTCACTGGAAAGATACTCTC
ACGCGTACGCGGCCGCTCGAGCAGAAACTCATCTCAGAAGAGGATCTGGCAGCAAATGATATCCTGGAT
TACAAGGATGACGACGATAAGGTTTAAACGGCCGGC
```



[View online »](#)

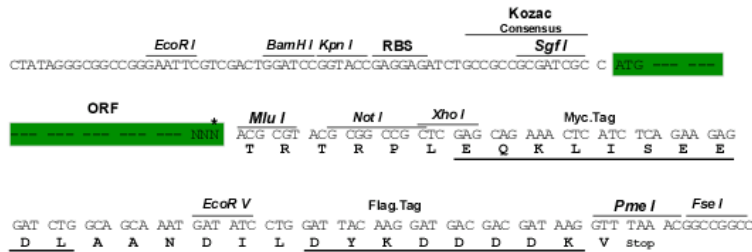
Protein Sequence: >Peptide sequence encoded by RC238172
 Blue=ORF Red=Cloning site Green=Tag(s)

MAAHHGDPYKCKLCGKAFVWPSLFHLHERHTHTGEKPYECKQCSKAFPFYSSYLRHERIHTGEKAYECK
 QCSKAFPDYSTYLRHERHTHTGEKPYKCTQCGKAFSCYYYTRLHERHTHTGEQPYACKQCGKTFYHHTSFR
 RHMIRHTGDGPHKCKICGKGFDCPSSVRNHETTHTGEKPYECKQCGKVLSSHSSFSRSHMIHTHTGDGPK
 CKICGKAFGCPSLFQRHERHTHTGEKPYCKQCGKAFSLAGSLRRHEATHTGVPKPYKCCGKAFSDLSSF
 QNHETTHTGEKPYECKCGKAFSCFKYLSQHKRHTHTVEKPYECKTCRKAFSHFSNLKVHERIHSGEKPY
 ECKEKGKAFSWLTCLLRHERIHTGEKPYECLQCGKAFTRSRLRGHEKHTHTGEKLYECKEKGKALSSLR
 SLHRHKRTHWKDTL
 TRTRPLEQKLISEEDLAANDILDYKDDDDKV

Restriction Sites: SgfI-MluI

Cloning Scheme:

Cloning sites used for ORF Shuttling:



* The last codon before the Stop codon of the ORF

ACCN: NM_001297610

ORF Size: 1284 bp

OTI Disclaimer: The molecular sequence of this clone aligns with the gene accession number as a point of reference only. However, individual transcript sequences of the same gene can differ through naturally occurring variations (e.g. polymorphisms), each with its own valid existence. This clone is substantially in agreement with the reference, but a complete review of all prevailing variants is recommended prior to use. [More info](#)

OTI Annotation: This clone was engineered to express the complete ORF with an expression tag. Expression varies depending on the nature of the gene.

Components: The ORF clone is ion-exchange column purified and shipped in a 2D barcoded Matrix tube containing 10ug of transfection-ready, dried plasmid DNA (reconstitute with 100 ul of water).

Reconstitution Method:

1. Centrifuge at 5,000xg for 5min.
2. Carefully open the tube and add 100ul of sterile water to dissolve the DNA.
3. Close the tube and incubate for 10 minutes at room temperature.
4. Briefly vortex the tube and then do a quick spin (less than 5000xg) to concentrate the liquid at the bottom.
5. Store the suspended plasmid at -20°C. The DNA is stable for at least one year from date of shipping when stored at -20°C.

RefSeq: [NM_001297610.2](#)

RefSeq Size: 2417 bp

RefSeq ORF: 1287 bp

Locus ID: 55552

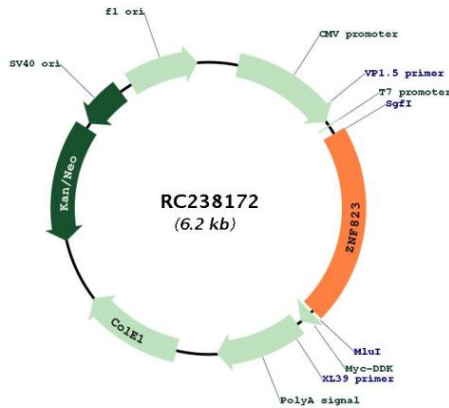
UniProt ID: [P16415](#)

Cytogenetics: 19p13.2

MW: 49.6 kDa

Gene Summary: May be involved in transcriptional regulation.[UniProtKB/Swiss-Prot Function]

Product images:



Circular map for RC238172