

Product datasheet for RC238169

ELP3 (NM_001284225) Human Tagged ORF Clone

Product data:

Product Type:	Expression Plasmids
Product Name:	ELP3 (NM_001284225) Human Tagged ORF Clone
Tag:	Myc-DDK
Symbol:	ELP3
Synonyms:	KAT9
Vector:	pCMV6-Entry (PS100001)
E. coli Selection:	Kanamycin (25 ug/mL)
Cell Selection:	Neomycin
ORF Nucleotide Sequence:	>RC238169 representing NM_001284225 Red=Cloning site Blue=ORF Green=Tags(s)

TTTTGTAATACGACTCACTATAGGGCGGCCGGAATTCGTCGACTGGATCCGGTACCGAGGAGATCTGCC
GCC**CGATCGCC**

ATGTCCACACATCAGTTTTACAGGAAATATATGTGTCCAACCTCCATGAGAGCTATCCGTGCCAGATATG
ACCCTTCTACAGACAAGACACCGAATAGAACAGTTAAAACAACCTGGTCATAGTGTGGATAAAGTGGA
GTTTATTGTGATGGGTGGAACGTTTATGGCCCTCCAGAAGAATACAGAGATTATTTTATTCGAAATTTA
CATGATGCCTTATCAGGACATACTTCCAACAATATTTACGAGGCAGTCAAGTATTCTGAGAGAAGCCTCA
CAAAGTGTATTGGAATTACTATTGAAACAGACCAGATTACTGCATGAAGCGACATTTAAGTGACATGTT
GACCTATGGCTGCACAAGGCTGGAGATTGGGGTGCAGAGTGTATGAAGATGTGGCTAGAGACCAAC
AGGGGCCACACTGTGAAGGCAGTGTGTGAGTCATTTACCTGGCCAAAGATTCGGTTTTAAAGTGGTGG
CCCATATGATGCCTGACCTGCCAACGTGGGACTAGAAAGAGACATTGAACAGTTCACAGAGTTTTTTGA
GAACCTGCTTTTCGTCGGATGGGCTGAAACTCTATCCTACCCTGGTGATTTCGTTGGACCGGCTTTAT
GAGCTTTGGAAATCAGGAAGATAAAGAGTTACTCTCCTAGTGACCTGGTTGAATTGGTGGCTCGGATCC
TAGCCCTCGTGCCTCCATGGACTCGAGTGTACCGAGTACAGAGGGATTTCCAATGCCTTTAGTTAGCTC
AGGAGTAGAGCATGGTAACCTGAGAGAGCTGGCACTTGAAGAATGAAAGACCTCGGAATACAGTGTGCA
GATGTGAGAACCAGAGAAGTTGGAATCCAAGAAATTCATCACAAGTACGGCCATACCAGTTGAATTGG
TAAGGAGAGATTATGTTGCAATGGTGGCTGGGAAACATTCCTGTGATACGAAGACCCAGATCAAGACAT
TTTGATTGGCCTCCTACGATTACGCAAGTGTTCAGAAGAACTTTCCGTTTTCGAATTGGGTGGAGGTGTC
TCCATAGTACGAGAGCTGCATGTGTATGGGAGTGTGGTCCCTGTGAGCAGCCGGGATCCTACTAAATTC
AGCATCAGGGATTTGGCATGCTGCTGATGGAGGAAGCAGAAAGAATAGCTAGAGAAGAACATGGGTCTGG
GAAAATCGCTGTGATATCAGGGTGGCACCAGGAATTATTATAGAAAGATCGGCTACAGATTACAAGGC
CCGTACATGGTGAAGATGCTGAAA

ACGCGTACGCGGCCGCTCGAGCAGAAACTCATCTCAGAAGAGGATCTGGCAGCAAATGATATCCTGGATT
ACAAGGATGACGACGATAAGGTTTAA



[View online »](#)

Protein Sequence: >RC238169 representing NM_001284225
Red=Cloning site Green=Tags(s)

MSTHQFYRKYMCPTSMRAIRARYDPFLQTRHRIEQLKQLGHSVDKVEFIVMGGTFMALPEEYRDYFIRNL
 HDALSGHTSNNIYEAVKYSERSLTKCIGITIIETRPDYCMKRHLSDMLTYGCTRLEIGVQSVYEDVARDTN
 RGHTVKAVCESFHLAKDSGFKVVAHMPDLPNVGLERDIEQTEFFENPAFRPDGLKLYPTLVIRGTGLY
 ELWKSGRYKSYSPSDLVELVARILALVPPWTRVYRVQRDIPMPLVSSGVEHGNLRELALARMKDLGIQCR
 DVRTREVGIQEIHHKVRPYQVELVRRDYVANGGWETFLSYEDPDQDILIGLLRLRKCSEETFRFELGGV
 SIVRELHVGYSVVPSSRDPTKFQHQFGMLLMEEAERIAREEHSGKIAVISGVGTRNYRKYGYRLQG
 PYMVKMLK

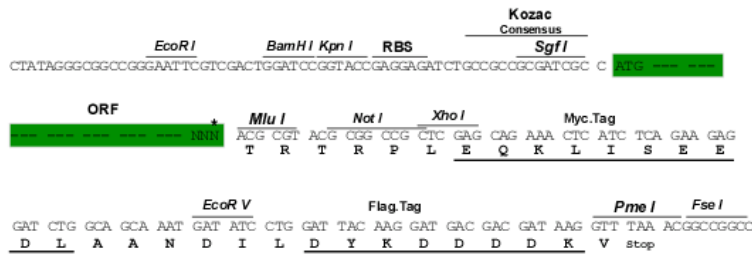
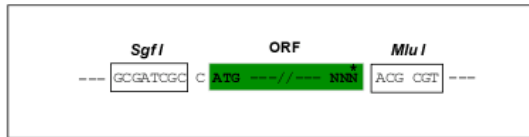
TRTRPLEQKLISEEDLAANDILDYKDDDDKV

Restriction Sites:

SgfI-MluI

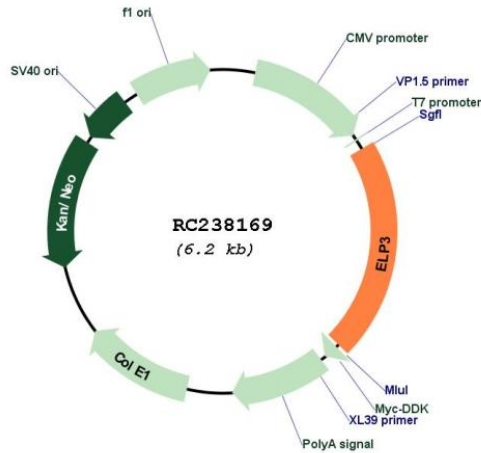
Cloning Scheme:

Cloning sites used for ORF Shuttling:



* The last codon before the Stop codon of the ORF

Plasmid Map:



ACCN: NM_001284225

ORF Size:	1284 bp
OTI Disclaimer:	The molecular sequence of this clone aligns with the gene accession number as a point of reference only. However, individual transcript sequences of the same gene can differ through naturally occurring variations (e.g. polymorphisms), each with its own valid existence. This clone is substantially in agreement with the reference, but a complete review of all prevailing variants is recommended prior to use. More info
OTI Annotation:	This clone was engineered to express the complete ORF with an expression tag. Expression varies depending on the nature of the gene.
Components:	The ORF clone is ion-exchange column purified and shipped in a 2D barcoded Matrix tube containing 10ug of transfection-ready, dried plasmid DNA (reconstitute with 100 ul of water).
Reconstitution Method:	<ol style="list-style-type: none">1. Centrifuge at 5,000xg for 5min.2. Carefully open the tube and add 100ul of sterile water to dissolve the DNA.3. Close the tube and incubate for 10 minutes at room temperature.4. Briefly vortex the tube and then do a quick spin (less than 5000xg) to concentrate the liquid at the bottom.5. Store the suspended plasmid at -20°C. The DNA is stable for at least one year from date of shipping when stored at -20°C.
RefSeq:	NM_001284225.1 , NP_001271154.1
RefSeq Size:	3071 bp
RefSeq ORF:	1287 bp
Locus ID:	55140
UniProt ID:	Q9H9T3
Cytogenetics:	8p21.1
MW:	49.9 kDa
Gene Summary:	ELP3 is the catalytic subunit of the histone acetyltransferase elongator complex, which contributes to transcript elongation and also regulates the maturation of projection neurons (Creppe et al., 2009 [PubMed 19185337]).[supplied by OMIM, Apr 2009]