

## Product datasheet for RC238156

### TC2N (NM\_001289134) Human Tagged ORF Clone

#### Product data:

Product Type:	Expression Plasmids
Product Name:	TC2N (NM_001289134) Human Tagged ORF Clone
Tag:	Myc-DDK
Symbol:	TC2N
Synonyms:	C2CD1; C14orf47; MTAC2D1; Tac2-N
Vector:	pCMV6-Entry (PS100001)
E. coli Selection:	Kanamycin (25 ug/mL)
Cell Selection:	Neomycin
ORF Nucleotide Sequence:	>RC238156 representing NM_001289134 Red=Cloning site Blue=ORF Green=Tags(s)

TTTTGTAATACGACTCACTATAGGGCGCCGGAATTCGTCGACTGGATCCGGTACCGAGGAGATCTGCC  
GCCGCGATCGCC

ATGGCAACAGAATTTATAAAGAGTTGCTGTGGAGGATGTTTCTATGGTGAACAGAAAAACAACCTTTT  
CTGTGAAAGAGATTTTAAAGCAGCAGTCCCAAATAGTCAAATGCTACTATCTCTGTACCTCCATTGAC  
TTCTGTTTCTGTAAGCCTCAGCTTGGCTGTACTGAGGATTATTTGCTTCCAAATTACCATCTGATGGC  
AAAGAAGTACCATTTGTGGTGCCCAAGTTAAGTTATCTTACATTC AACCCAGGACACAAGAACTCCTT  
CACATCTGGAAGAACTTGAAGGATCTGCCAGAGCATCTTTTGGAGATCGAAAGGTAGAATTTCCAGTTC  
ATCCCAGCACGGACCTAGCTATGATGTGTATAACCCATTCTATATGTATCAGCACATTTACCTGATTTG  
AGTCGACGCTTTCCTCCCGTTCAGAAGTGACGAGACTGTATGGATCGGTTTGTGATTTAAGGACGAACA  
AACTTCCCGTTCCTCCCGTTCAGAAGTGAAGCAATCTATGTTTGTATCTTACAACTCATCTCAGCGATTCATCCA  
GAGACATGATTCATTGTCCAGTGTACCCAGTAGTTCTTCTTCAAGGAAAAATTCAGGGGAGTAACAGA  
AGCCTGGATAACAATTACTCTATCAGGAGATGAAAGGGACTTTGGGAGACTGAATGTGAAATGTTTTATA  
ATCTTTCAGTAGAACAGATCTGGATCACAGTTTTACAGTGCAGAGATTTAAGTTGGCCCTCTAGTTATGG  
AGACACTCCTACTGTTTCTATAAAGGAATACTTACATTGCCCAAACAGTGCATTTCAAATCTTCAGCC  
AAGGAAGTTCCAACGTTTGCCATGCAGAACTGAATTGGGGACTTGTTCAGCAGTAAATAGCAGAA  
TTCAGTTACAAATCTTGAGGCACGGTACCTTCCAAGCTCATCAACACCTCTGACTTTGAGTTTTTTCGT  
GAAGGTGGGAATGTTTAGCTCGGGAGAGTTGATTTATAAGAAAAAGACACGCTTACTGAAGGCCTCCAAT  
GGAAGAGTCAAGTGGGAGAGACTATGATTTTTCCACTTATACAGAGTAAAAAGAAATGTTTTTCTCA  
TTAAGCTTACAGTCGAAGCTCTGTAAGAAGAAAAACATTTGTGGCCAGATTTGGATAAGTGAAGACAG  
TAATAACATTGAAGCAGTGAACAGTGGAAAGAGACAGTAATAAATCCAGAAAAGGTTGTTATCAGGTGG  
CACAAATTAATCCATCT

ACGCGTACGCGGCCGCTCGAGCAGAACTCATCTCAGAAGAGGATCTGGCAGCAAATGATATCCTGGATT  
ACAAGGATGACGACGATAAGGTTTAA



[View online »](#)

Protein Sequence: >RC238156 representing NM\_001289134  
 Red=Cloning site Green=Tags(s)

MATEFIKSCCGGCFYGETEKHNFSVERDFKAAVPNSQNATISVPPLTSVSVKPKQLGCTEDYLLSKLPSDG  
 KEVPFVVPKFKLSYIQPRTQETPSHLEELGASARASFGDRKVELSSSSQHGPSYDVYVNPFFYMYQHI  
 SPDL SRRFPFRSEVTRLYGSDCLRTNKLPGSPGLSKSMFDL TNSQRF IQRHDSLSSVPSSSSRKNSQGSNR  
 SLDITITLSGDERDFGRLNVKLFYNSSVEQIWIITVLQCRDLSWPSSYGDTPTVSIKGIILTLKPKVHFKSSA  
 KEGSNVCHAELELGTFCFQAVNSRIQLQILEARYLPPSSSTPLTL SFFVKVGMFSSGELIYKKKTRLLKASN  
 GRVKWGETMIFPLIQSEKEIVFLIKLYSRSSVRKHFVGGIWI SEDSNNIEAVNQWKETVINPEKVVIRW  
 HKLNPS

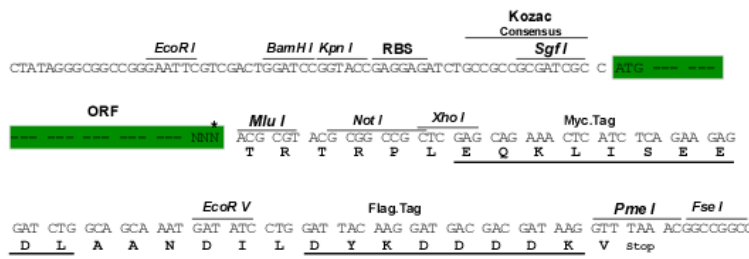
TRTRPLEQKLISEEDLAANDILDYKDDDDKV

Restriction Sites:

SgfI-MluI

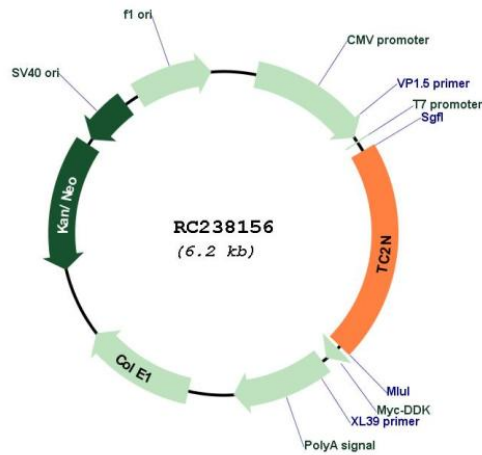
Cloning Scheme:

Cloning sites used for ORF Shuttling:



\* The last codon before the Stop codon of the ORF

Plasmid Map:



ACCN: NM\_001289134

<b>ORF Size:</b>	1278 bp
<b>OTI Disclaimer:</b>	The molecular sequence of this clone aligns with the gene accession number as a point of reference only. However, individual transcript sequences of the same gene can differ through naturally occurring variations (e.g. polymorphisms), each with its own valid existence. This clone is substantially in agreement with the reference, but a complete review of all prevailing variants is recommended prior to use. <a href="#">More info</a>
<b>OTI Annotation:</b>	This clone was engineered to express the complete ORF with an expression tag. Expression varies depending on the nature of the gene.
<b>Components:</b>	The ORF clone is ion-exchange column purified and shipped in a 2D barcoded Matrix tube containing 10ug of transfection-ready, dried plasmid DNA (reconstitute with 100 ul of water).
<b>Reconstitution Method:</b>	<ol style="list-style-type: none"><li>1. Centrifuge at 5,000xg for 5min.</li><li>2. Carefully open the tube and add 100ul of sterile water to dissolve the DNA.</li><li>3. Close the tube and incubate for 10 minutes at room temperature.</li><li>4. Briefly vortex the tube and then do a quick spin (less than 5000xg) to concentrate the liquid at the bottom.</li><li>5. Store the suspended plasmid at -20°C. The DNA is stable for at least one year from date of shipping when stored at -20°C.</li></ol>
<b>RefSeq:</b>	<a href="#">NM_001289134.1</a> , <a href="#">NP_001276063.1</a>
<b>RefSeq Size:</b>	4842 bp
<b>RefSeq ORF:</b>	1281 bp
<b>Locus ID:</b>	123036
<b>UniProt ID:</b>	<a href="#">Q8N9U0</a>
<b>Cytogenetics:</b>	14q32.12
<b>MW:</b>	48.4 kDa