

## Product datasheet for **RC238151**

### AP1M2 (NM\_001300887) Human Tagged ORF Clone

#### Product data:

Product Type:	Expression Plasmids
Product Name:	AP1M2 (NM_001300887) Human Tagged ORF Clone
Tag:	Myc-DDK
Symbol:	AP1M2
Synonyms:	AP1-mu2; HSMU1B; MU-1B; MU1B; mu2
Vector:	pCMV6-Entry (PS100001)
E. coli Selection:	Kanamycin (25 ug/mL)
Cell Selection:	Neomycin
ORF Nucleotide Sequence:	>RC238151 representing NM_001300887 Red=Cloning site Blue=ORF Green=Tags(s)

TTTTGTAATACGACTCACTATAGGGCGCCGGGAATTCGTCGACTGGATCCGGTACCGAGGAGATCTGCC  
GCC**CGGATCGCC**

ATGTCCGCTCGGCTGTCTTCATTCTGGACGTTAAGGGCAAGCCATTGATCAGCCGCAACTACAAGGGCG  
ATGTGGCCATGAGCAAGATTGAGCACTTCATGCCTTTGCTGGTACAGCGGGAGGAGGAAGGCCCTTGGC  
CCCCTGTGAGCCACGGCCAGGTCCACTTCTATGGATCAAACACAGCAACCTCTACTTGGTGGCCACC  
ACATCGAAGAATGCCAATGCCTCCCTGGTACTCCTTCTGTATAAGACAATAGAGGATTTCTGGCAAT  
ACTTCAAGGAGCTGGAGGAGGAGAGCATCCGGGACAACCTTTGTCATCGTCTACGAGTTGGTGGACGAGCT  
CATGGACTTTGGCTTCCCGCAGACCACCGACAGCAAGATCCTGCAGGAGTACATCACTCAGCAGAGCAAC  
AAGCTGGAGACGGGCAAGTCACGGGTGCCACCCACTGTCACCAACGCTGTGTCCTGGCGCTCCGAGGGTA  
TCAAGTATAAGAAGAACGAGGTCTTCATTGATGTCATAGAGTCTGTCAACCTGCTGGTCAATGCCAACGG  
CAGCGTCTTCTGAGCGAAATCGTCGGTACCATCAAGCTCAAGGTGTTTCTGTGAGGAATGCCAGAGCTG  
CGGCTGGCCTCAATGACCGCGTGTCTTCGAGCTCACTGGCCTTCAGGCAGCAAGAACAATCAGTAG  
AGCTGGAGGATGTAATAATCCACCAGTGGTGGCCTCTCTCGCTTTGACAACGACCCACCATCTCCTT  
CATCCCGCTGATGGTGACTTTGAGCTCATGTCAACCGCTCAGCACCCAGGTCAAGCCACTGATCTGG  
ATTGAGTCTGTCATTGAGAAGTTCTCCACAGCCGCTGGAGATCATGGTCAAGGCCAAGGGCAGTTTA  
AGAAACAGTCAGTGGCAACGGTGTGGAGATATCTGTGCCTGTACCCAGCGATGCCGACTCCCCAGATT  
CAAGACCAGTGTGGCAGCGCAAGTATGTGCCGGAGAGAAACGTCGTGATTTGGAGTATTAAGTCTTTC  
CCGGGGGCAAGGAGTACTTGATGCGAGCCACTTTGGCCTCCCCAGTGTGAAAAGGAAGGTTGGAGG  
GCCGGCCCCCATCGGGTCAAGTTTGGATCCCCTACTTCAACCGTCTCTGGGATCCAGGTCGGATACAT  
GAAGATCATTGAGAAAAGTGGTTACCAGGCCCTGCCCTGGGTTGCTACATCACCCAGAGTGGCGATTAC  
CAACTTCGTACCAGC

**ACGCGT**ACGCGGCCGCTCGAGCAGAACTCATCTCAGAAGAGGATCTGGCAGCAAATGATATCCTGGATT  
ACAAGGATGACGACGATAAGGTTTAA



[View online »](#)

**Protein Sequence:** >RC238151 representing NM\_001300887  
Red=Cloning site Green=Tags(s)

MSASAVFILDVKGKPLISRNYKGDVAMSKIEHFMPLL VQREEEGALAPLLSHGQVHFLWIKHSNLYLVAT  
 TSKNANASLVYSFLYKTIIEVFCEYFKELEESIRDNFVIVYELLDELMDFGFPQTDSKILQEYITQOSN  
 KLETGKSRVPTVTNAVSWRSEGIKYKNEVFIDVIESVNLNANGSVLLSEIVGTIKLVFLSGMP  
 RLGLNDRVLFELTGLSGSKNKSVLEEDVKFHQCVRLSRFDNDRTISFIPPDGDFELMSYRLSTQVKPLIW  
 IESVIEKFSHSRVEIMVKAKGQFKQSVANGVEISVPVPSDADSPRFKTSVGS AKYVPERNVVIWSIKSF  
 PGGKEYLMRAHFGLPSVEKEEVEGRPPIGVKFEIPYFTVSGIQVRYMKIIEKSGYQALPWVRYITQSGDY  
 QLRTS

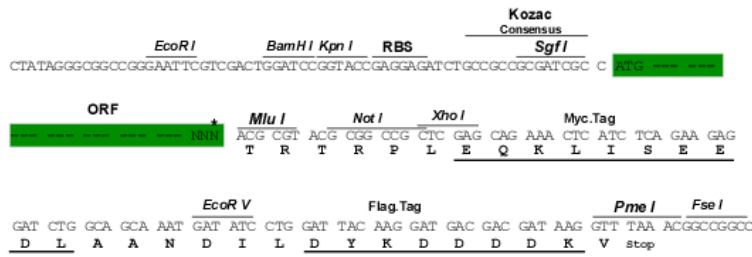
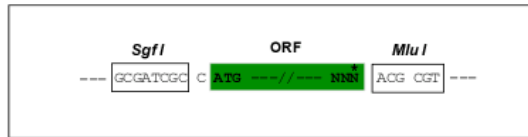
TRTRPLEQKLISEEDLAANDILDYKDDDDKV

**Restriction Sites:**

SgfI-MluI

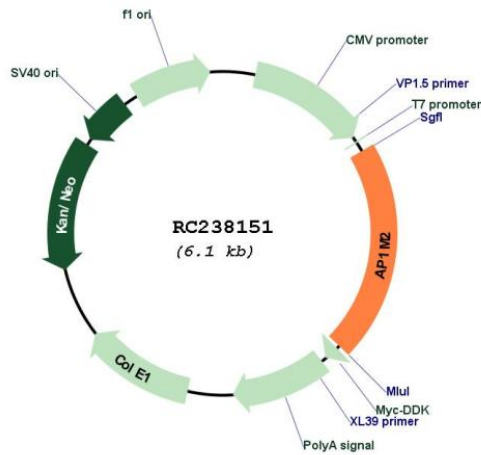
**Cloning Scheme:**

Cloning sites used for ORF Shuttling:



\* The last codon before the Stop codon of the ORF

**Plasmid Map:**



**ACCN:** NM\_001300887

<b>ORF Size:</b>	1275 bp
<b>OTI Disclaimer:</b>	The molecular sequence of this clone aligns with the gene accession number as a point of reference only. However, individual transcript sequences of the same gene can differ through naturally occurring variations (e.g. polymorphisms), each with its own valid existence. This clone is substantially in agreement with the reference, but a complete review of all prevailing variants is recommended prior to use. <a href="#">More info</a>
<b>OTI Annotation:</b>	This clone was engineered to express the complete ORF with an expression tag. Expression varies depending on the nature of the gene.
<b>Components:</b>	The ORF clone is ion-exchange column purified and shipped in a 2D barcoded Matrix tube containing 10ug of transfection-ready, dried plasmid DNA (reconstitute with 100 ul of water).
<b>Reconstitution Method:</b>	<ol style="list-style-type: none"><li>1. Centrifuge at 5,000xg for 5min.</li><li>2. Carefully open the tube and add 100ul of sterile water to dissolve the DNA.</li><li>3. Close the tube and incubate for 10 minutes at room temperature.</li><li>4. Briefly vortex the tube and then do a quick spin (less than 5000xg) to concentrate the liquid at the bottom.</li><li>5. Store the suspended plasmid at -20°C. The DNA is stable for at least one year from date of shipping when stored at -20°C.</li></ol>
<b>RefSeq:</b>	<a href="#">NM_001300887.2</a>
<b>RefSeq Size:</b>	1779 bp
<b>RefSeq ORF:</b>	1278 bp
<b>Locus ID:</b>	10053
<b>UniProt ID:</b>	<a href="#">Q9Y6Q5</a>
<b>Cytogenetics:</b>	19p13.2
<b>Protein Pathways:</b>	Lysosome
<b>MW:</b>	48.7 kDa
<b>Gene Summary:</b>	This gene encodes a subunit of the heterotetrameric adaptor-related protein complex 1 (AP-1), which belongs to the adaptor complexes medium subunits family. This protein is capable of interacting with tyrosine-based sorting signals. Alternative splicing results in multiple transcript variants. [provided by RefSeq, Jul 2014]