

Product datasheet for **RC238138**

Estrogen Related Receptor alpha (ESRRA) (NM_001282450) Human Tagged ORF Clone

Product data:

Product Type:	Expression Plasmids
Product Name:	Estrogen Related Receptor alpha (ESRRA) (NM_001282450) Human Tagged ORF Clone
Tag:	Myc-DDK
Symbol:	ESRRA
Synonyms:	ERR1; ERRa; ERRalpha; ESRL1; NR3B1
Vector:	pCMV6-Entry (PS100001)
E. coli Selection:	Kanamycin (25 ug/mL)
Cell Selection:	Neomycin
ORF Nucleotide Sequence:	>RC238138 representing NM_001282450 Red=Cloning site Blue=ORF Green=Tags(s)

TTTTGTAATACGACTCACTATAGGGCGCCGGAATTCGTCGACTGGATCCGGTACCGAGGAGATCTGCC
GCC**CGGATCGCC**

ATGTCCAGCCAGGTGGTGGGCATTGAGCCTCTCTACATCAAGGCAGAGCCGGCCAGCCCTGACAGTCCAA
AGGTTTCTCGGAGACAGAGACCGAGCCTCCTGTGGCCCTGGCCCTGGTCCAGCTCCACTCGTGCCT
CCCAGGCCACAAGGAAGAGGAGGATGGGGAGGGGCTGGGCTGGCGAGCAGGGCGGTGGGAAGCTGGT
CTCAGCTCCCTGCCAAGCGCCTCTGCCTGGTCTGTGGGACGTGGCCTCCGGTACCACTATGGTGTGG
CATCCTGTGAGGCCTGCAAAGCCTTCTTCAAGAGGACCATCCAGGGGAGCATCGAGTACAGCTGTCCGGC
CTCCAACGAGTGTGAGATCACCAAGCGGAGACGCAAGGCCTGCCAGGCCTGCCGCTTACCAAGTGCCTG
CGGGTGGGCATGCTCAAGGAGGAGTGCCTGGACCGGTCCGGGGTGGCGGCAGAAGTACAAGCGGC
GGCCGGAGGTGGACCACTGCCCTTCCCGGGCCCTTCCCTGCTGGGCCCTGGCAGTCCGCTGGAGGCC
CCGGAAGACAGCAGCCCCAGTGAATGCACTGGTGTCTCATCTGCTGGTGGTTGAGCCTGAGAAGCTCTAT
GCCATGCCTGACCCCGCAGGCCCTGATGGGCACCTCCAGCCGTGGCTACCCTCTGTGACCTCTTTGACC
GAGAGATTGTGGTCACCATCAGCTGGGCCAAGAGCATCCAGGCTTCTCATCGCTGCTGCTGTGACCA
GATGTGCTACTGCAGAGCGTGTGGATGGAGGTGCTGGTGTGGTGGTGGCCAGCGCTCACTGCCACTG
CAGGATGAGCTGGCCTTCCGCTGAGGACTTAGTCTGGATGAAGAGGGGGCACGGGCAGCTGGCCTGGGG
AACTGGGGCTGCCCTGCTGCAACTAGTGCGGCGCTGCAGGCCCTGCCGCTGGAGCGAGAGGAGTATGT
TCTACTAAAGGCCTTGGCCCTTGCCAATTCAGACTCTGTGCACATCGAAGATGCCAGGCTGTGGAGCAG
CTGCGAGAAGCTTGCACGAGGCCCTGCTGGAGTATGAAGCCGGCCGGGCTGGCCCCGAGGGGGTGTG
AGCGGGCGGGCGGGCAGGCTGCTGCTCAGCTACCGCTCCTCCGCAGACAGCGGGCAAAGTGTGGC
CCATTTCTATGGGGTGAAGCTGGAGGGCAAGGTGCCCATGCACAAGCTGTTCTTGGAGATGCTCGAGGCC
ATGATGGAC

ACGCGTACGCGGCCGCTCGAGCAGAACTCATCTCAGAAGAGGATCTGGCAGCAAATGATATCCTGGATT
ACAAGGATGACGACGATAAGGTTTAA



Protein Sequence: >RC238138 representing NM_001282450
 Red=Cloning site Green=Tags(s)

MSSQVVGIEPLYIKAEPASPDSPKGSSETETEPVVALPGPAPTRCLPGHKEEEDGEGAGPGEQGGGKLV
 LSSLPKRLCLVCGDVASGYHYGVASCEACKAFFKRTIQGSEIYSCPASNECEITKRRRKACQACRFTKCL
 RVGMLKEGVRLDRVRRGRQKYKRRPEVDPLPFPFPAGPLAVAGGPRKTAAPVNALVSHLLVVEPEKLY
 AMPDPAGPDGHLPAVATLCDLFDREIVVTISWAKSIPGFSLSLSDQMSVLQSVWMEVLVLGVAQRSLPL
 QDELAF AEDLVLDEEGARAAGL GELGAALLQLVRRQLALRLEREYVLLKALALANSDSVHIEDAEAVEQ
 LREALHEALLEYEAGRAGPGGGAERRRAGRLLLTPLLRQTAGKVL AHFYGVKLEKGVPMHKL FLEMLEA
 MMD

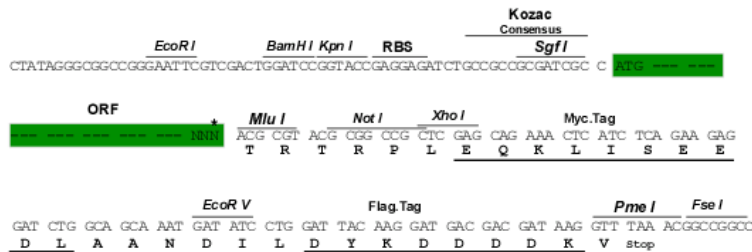
TRTRPLEQKLISEEDLAANDILDYKDDDDKV

Restriction Sites:

Sgfl-MluI

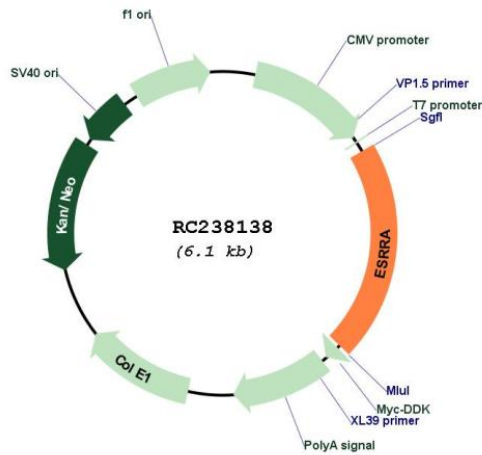
Cloning Scheme:

Cloning sites used for ORF Shuttling:



* The last codon before the Stop codon of the ORF

Plasmid Map:



ACCN:

NM_001282450

ORF Size:	1269 bp
OTI Disclaimer:	The molecular sequence of this clone aligns with the gene accession number as a point of reference only. However, individual transcript sequences of the same gene can differ through naturally occurring variations (e.g. polymorphisms), each with its own valid existence. This clone is substantially in agreement with the reference, but a complete review of all prevailing variants is recommended prior to use. More info
OTI Annotation:	This clone was engineered to express the complete ORF with an expression tag. Expression varies depending on the nature of the gene.
Components:	The ORF clone is ion-exchange column purified and shipped in a 2D barcoded Matrix tube containing 10ug of transfection-ready, dried plasmid DNA (reconstitute with 100 ul of water).
Reconstitution Method:	<ol style="list-style-type: none">1. Centrifuge at 5,000xg for 5min.2. Carefully open the tube and add 100ul of sterile water to dissolve the DNA.3. Close the tube and incubate for 10 minutes at room temperature.4. Briefly vortex the tube and then do a quick spin (less than 5000xg) to concentrate the liquid at the bottom.5. Store the suspended plasmid at -20°C. The DNA is stable for at least one year from date of shipping when stored at -20°C.
RefSeq:	NM_001282450.1 , NP_001269379.1
RefSeq Size:	2293 bp
RefSeq ORF:	1272 bp
Locus ID:	2101
UniProt ID:	P11474
Cytogenetics:	11q13.1
Protein Families:	Druggable Genome, Nuclear Hormone Receptor, Transcription Factors
MW:	46 kDa
Gene Summary:	The protein encoded by this gene is a nuclear receptor that is most closely related to the estrogen receptor. This protein acts as a site-specific transcription factor and interacts with members of the PGC-1 family of transcription cofactors to regulate the expression of most genes involved in cellular energy production as well as in the process of mitochondrial biogenesis. A processed pseudogene of ESRRA is located on chromosome 13q12.1. [provided by RefSeq, Jun 2019]